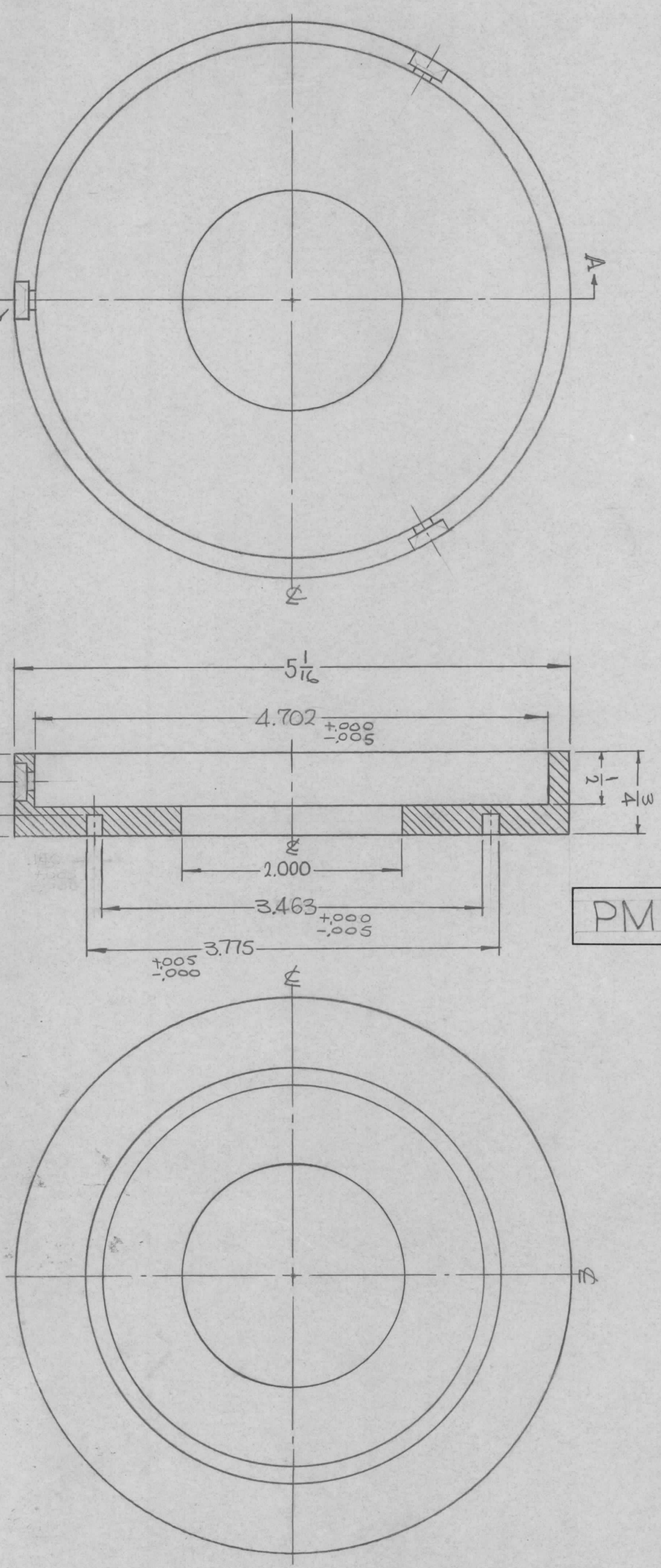


REVISIONS		SYM	DESCRIPTION	DATE	E.M.N. NO.	DRAFT	CHKD	APPD
X1	3.495 WAS 3.594 TO CENTER OF GROOVE	X1	GROOVE WAS .156, 4.702 WAS $\pm .005$	4-20-65	X1	SRG		
X2	3.463 $\pm .005$ WAS 3.495 $\pm .005$	X2		4-26-65	X2	SRG		
X3	HOLES WERE 8-32 C'SINK	X3	ORIGINAL RELEASE FOR PRODUCTION	5-11-65	X3	SRG	VA	RS
				8-366		RME		



TMC FORM 108
 4775
 4775
 4775

DR. 13/64 DIA. C'BORE
 23/64 DIA X .108 DP.
 EQUALLY SPACED
 120° APART.
 (3 REQ.)

SECTION - A-A

PM1241

Q'TY./UNIT	1	TSTE - 10K	MODEL USED ON	A	ASSY. NO.	A
SCALE	1:1		CODE	A		

THE CONTENTS OF THIS DRAWING ARE THE EXCLUSIVE PROPERTY
 OF THE TECHNICAL MATERIEL CORP. ITS UNAUTHORIZED USE OR
 REPRODUCTION IN WHOLE OR IN PART IS STRICTLY FORBIDDEN.

REQD. ITEM	PART NUMBER	DESCRIPTION	SYMBOL
F. BUDETTI			
MATERIAL	ALUMINUM 2024-T3		
FINISH	SAO4 YELLOW IRIDITE		

THE TECHNICAL MATERIEL CORP.
 MAMARONECK, NEW YORK

PLATE, CAPACITOR, TOP

UNLESS OTHERWISE SPECIFIED DIMENSIONS ARE IN INCHES AND INCLUDE CHEMICALLY APPLIED OR PLATED FINISHES	TOLERANCES	FRACTIONS
DECIMALS	.X ± .05	± 1/64
	.XX ± .01	ANGLES ± 0° 30'
	.XXX ± .005	

DRAWN	CHECKED	ELECT. DES.	MECH. DES.	DATE	DATE	DATE	DATE	DATE
SRG	SRG			4-7-65				

FINAL APPROVAL

PM1241