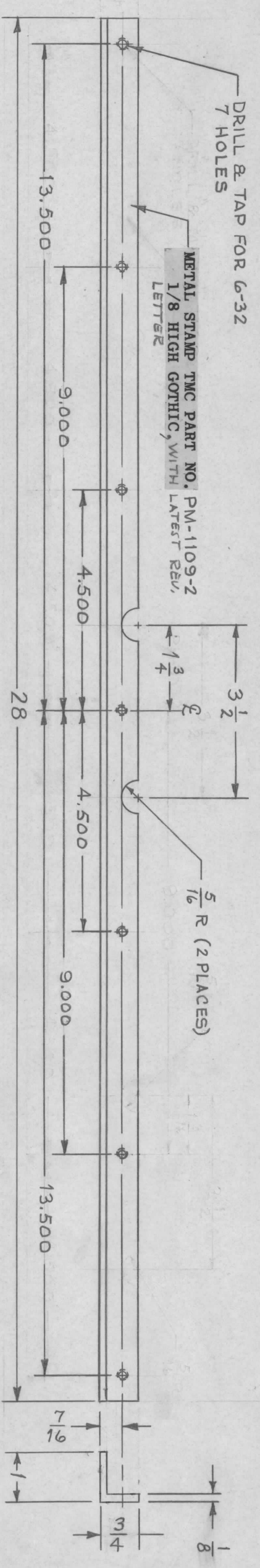
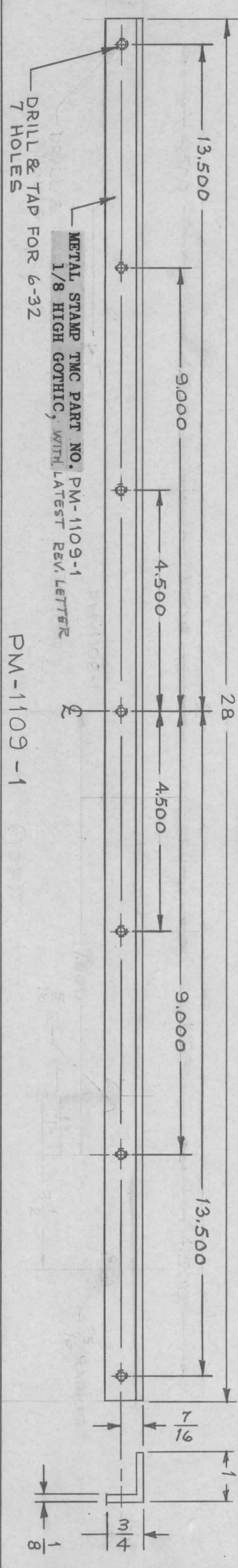


TMC PART NO	MODEL USED ON	QTY / UNIT
PM-1109-1	QDP-PA-106	2
PM-1109-1	QDP-PA-107	2
PM-1109-2	AX-514	2

SYM	DESCRIPTION	DATE	E.M.N. NO.	DRAFT	CHKD	APPD
Ø	ORIGINAL RELEASE FOR PRODUCTION	10-13-64		G.D.L		



PM-1109-2

REC'D.	ITEM	PART NUMBER	DESCRIPTION	SYMBOL
		MARTIN ENG'D	LIST OF MATERIAL	

MATERIAL	FINISH	TITLE	DRAWN	CHECKED	ELECT. DES.	MECH. DES.	DATE	FINAL APPROVAL	DATE
STEEL 1 X 3/4 X 1/8 ANGLE	S424 IRIDIOTE	BRACE, PANEL	M TANTILLO	Ⓞ			9-15-64		
		THE TECHNICAL MATERIEL CORP.					10-13-64		
		MAMARONECK, NEW YORK							

- UNLESS OTHERWISE SPECIFIED:
1. USE MATERIAL THICKNESS FOR MAXIMUM RADIUS ON ALL BENDS
 2. ALL ANGULAR BENDS 90 DEGREES
 3. REMOVE ALL BURRS AND SHARP EDGES

NOTES

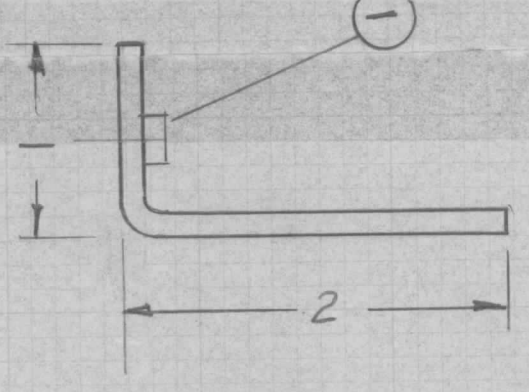
QTY./UNIT	SEE CHART	MODEL USED ON	ASSY. NO.
SCALE	1:2	CODE	A

DECIMALS	TOLERANCES	FRACTIONS	ANGLES
.X ± .05		± 1/64	± 0° 30'
.XX ± .01		± 1/64	
.XXX ± .005		± 1/64	

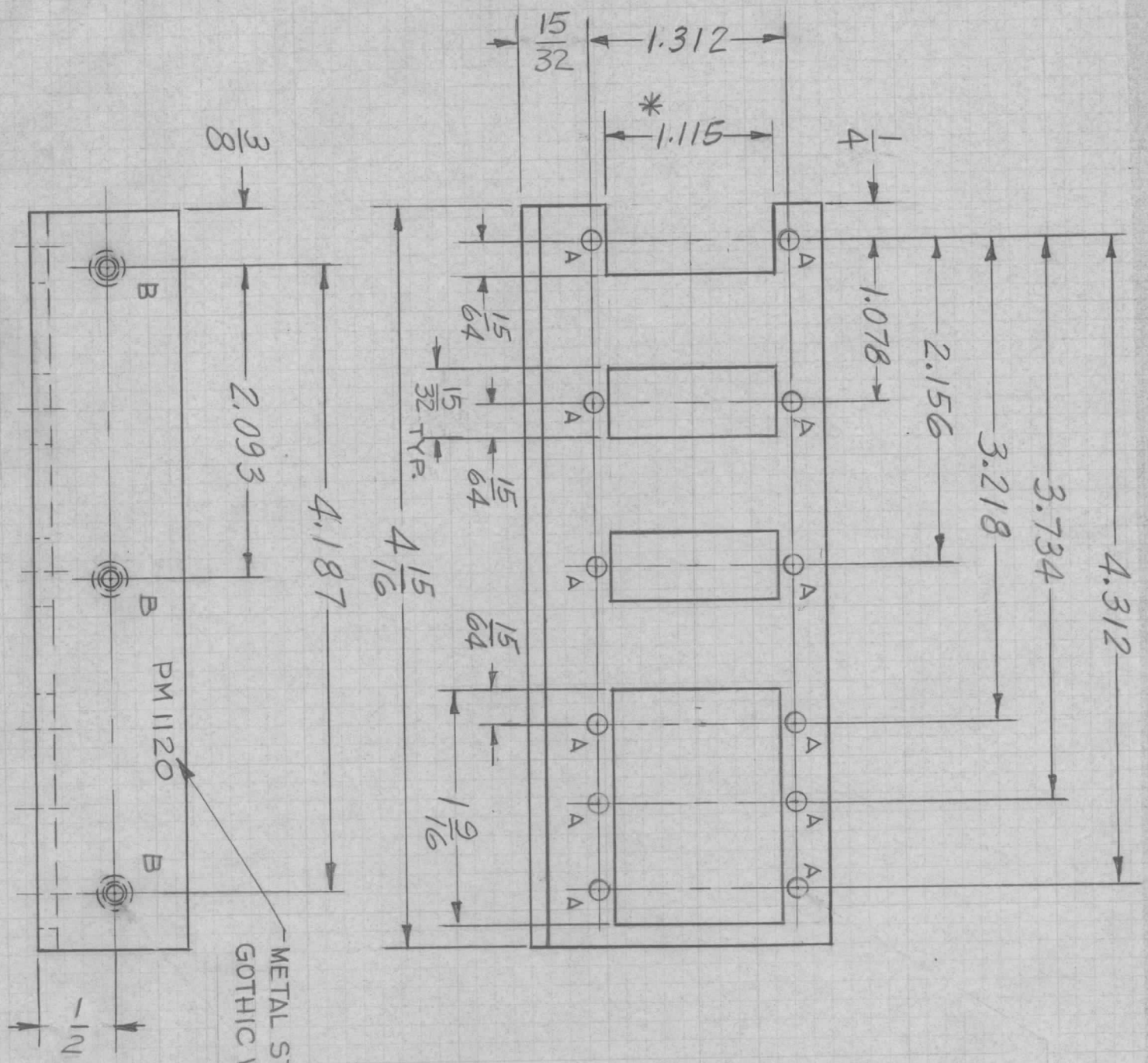
REVISIONS		DATE	E.M.N. NO.	DRAFT	CHKD	APPD
SYM	DESCRIPTION					
X	EXPER. RELEASE					
X1	CHANGED FROM EXTRUDED TO FLAT	12-1-64		GDL		
Ø	ORIGINAL RELEASE FOR PRODUCTION	4/9/65		Ø		

PM1120						
--------	--	--	--	--	--	--

HOLE	DESCRIPTION	REQ
A	9/64 DIA	12
B	.191-.194 DIA	3



MOUNT IN ALL 'B' HOLES (1)



METAL STAMP TMC P/NO 1/8 HIGH GOTHIC W/LATEST REV. LETTER

REQ'D.	ITEM	PART NUMBER	DESCRIPTION	SYMBOL
3	1	NT129-632-6	NUT, PLAIN, SPLINE	

LIST OF MATERIAL		THE TECHNICAL MATERIEL CORP.	
MATERIAL		MAMARONECK, NEW YORK	
FINISH		BRACKET, CONNECTOR, MTG	
.125 THK ALUMINUM			
5052-H32			
5404 YEL. IRIDITE			

DRAWN	CHECKED	ELECT. DES.	MECH. DES.	DATE	FINAL APPROVAL	DATE
GDL	Ø					

QTY./UNIT	VL2B-1	MODEL USED ON	ASS'Y. NO.
SCALE	1:1	CODE	A

UNLESS OTHERWISE SPECIFIED:

1. USE MATERIAL THICKNESS FOR MAXIMUM RADIUS ON ALL BENDS
2. ALL ANGULAR BENDS 90 DEGREES
3. REMOVE ALL BURRS AND SHARP EDGES
4. MOUNT INSERTS AFTER FINISHING

* CUTOUTS CENTERED BETWEEN HOLES

NOTES

REVISIONS			
SYM	DESCRIPTION	DATE	E.M.N. NO.
X	EXPER RELEASE	10-1-44	X
X1	ITEM # / WAS NT 129-632-6	2/8/45	
Ø	ORIGINAL RELEASE FOR PRODUCTION	2-10-45	Ø

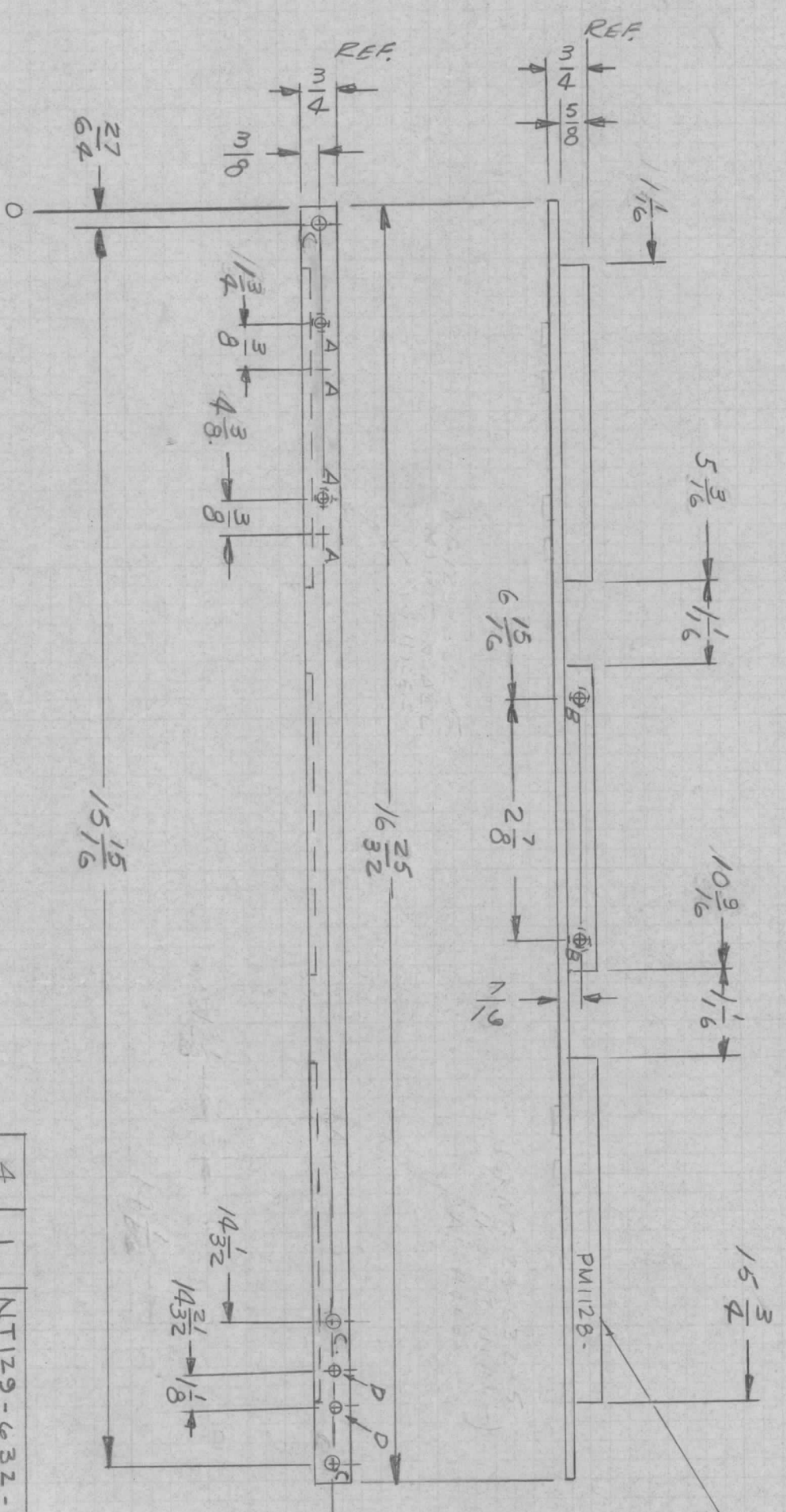
PM1128

HOLE LEGEND

HOLE DESCRIPTION	REQ'D
"A" .191 - .194 DIA	4
"B" .169 DIA & C'S INK 82°	2
"C" X.337 DIA (BOTTOM SIDE)	3
"D" 3/16 DIA	2
"E" 1/16 DIA	2

METAL STAMP TMC
PT. NO. 1/8 HIGH
GOTHIC W/LATEST
REV. LETTERED.

1 MOUNT IN ALL "A" HOLES AFTER FINISHING



REQ'D.	ITEM	PART NUMBER	DESCRIPTION	SYMBOL
4	1	NT129-632-6	NUTS, PLAIN, SPLINE	A
LIST OF MATERIAL				
EATON				
MATERIAL				
EXTRUDED ALUMINUM ANGLE				
3/4 X 3/4 X 1/8 THK				
FINISH				
YELLOW IRIDITE				
5902				
THE TECHNICAL MATERIEL CORP.				
MAMARONECK, NEW YORK				
TITLE				
BRACKET SUPPORT BOTTOM				
(P.C. CARD BIN)				

Q'TY./UNIT	MODEL USED ON	ASS'Y. NO.
1	ETA-1	A4062
SCALE		
A		

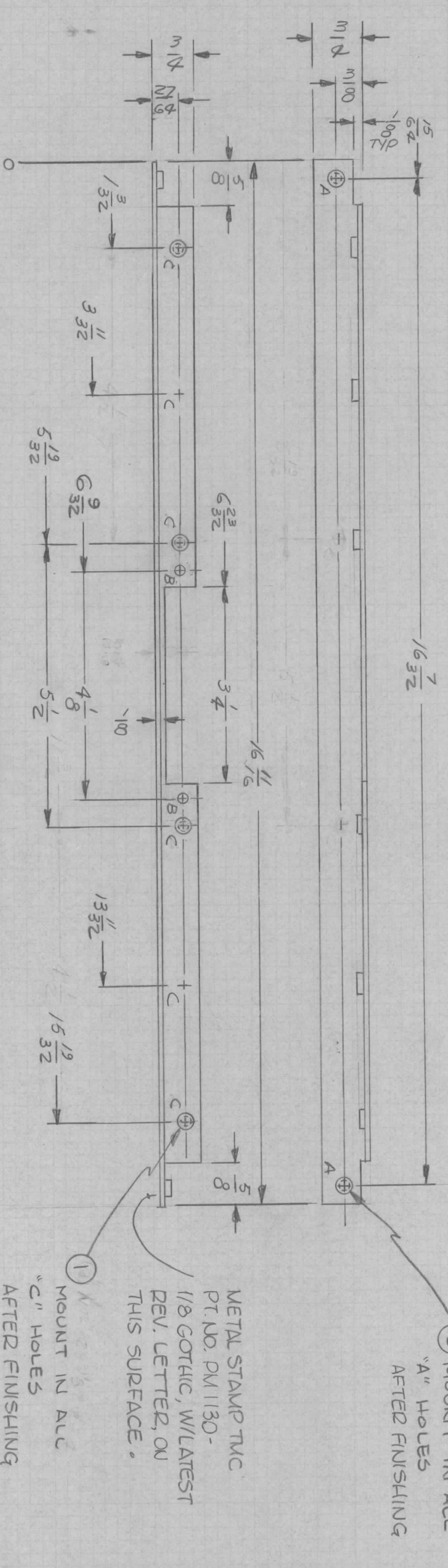
UNLESS OTHERWISE SPECIFIED DIMENSIONS ARE IN INCHES AND INCLUDE CHEMICALLY APPLIED OR PLATED FINISHES	DECIMALS	FRACTIONS
	.X ± .05	± 1/64
	.XX ± .01	± .01
	.XXX ± .005	± 0° 30'
TOLERANCES		
DRAWN JL		
CHECKED JM		
ELECT. DES. W. JORDAN		
MECH. DES. W. JORDAN		
DATE	DATE	FINAL APPROVAL
2/8/65	2/8/65	
		DATE
		REV. LTR.

NOTES

PM 1130

SYM	DESCRIPTION	DATE	E.M.N. NO.	DRAFT	CHKD	APPD
X1	6 5/32 WAS 5 9/32	11/11/64		1008	JM	W.S.
Ø	ORIGINAL RELEASE FOR PRODUCTION	2/10/65		1022	gob	

REVISIONS



② MOUNT IN ALL "A" HOLES AFTER FINISHING

① MOUNT IN ALL "C" HOLES AFTER FINISHING

METAL STAMP TMC
PT. NO. PM 1130 -
1/8 GOTHIC, W/LATEST
DEV. LETTER, ON
THIS SURFACE.

HOLE	DESCRIPTION	REQ'D
"A"	.191 - .194 DIA	2
"B"	5/32 DIA	2
"C"	.221 - .224 DIA.	6

HOLE LEGEND

HOLE	DESCRIPTION	REQ'D
"A"	.191 - .194 DIA	2
"B"	5/32 DIA	2
"C"	.221 - .224 DIA.	6

QTY./UNIT	1	MODEL USED ON	ETIA-1	ASSY. NO.	A 4064
SCALE	1-1	CODE	A		

THE CONTENTS OF THIS DRAWING ARE THE EXCLUSIVE PROPERTY OF THE TECHNICAL MATERIEL CORP. ITS UNAUTHORIZED USE OR REPRODUCTION IN WHOLE OR IN PART IS STRICTLY FORBIDDEN.

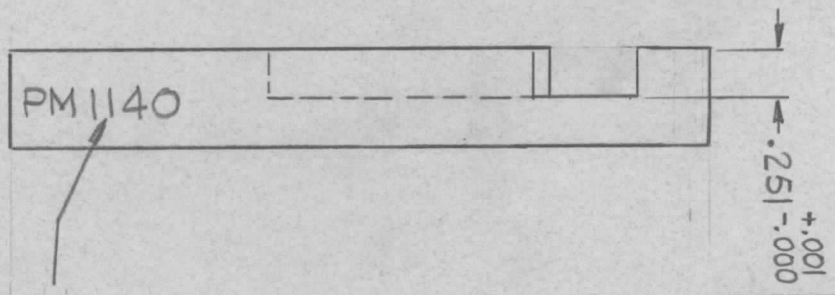
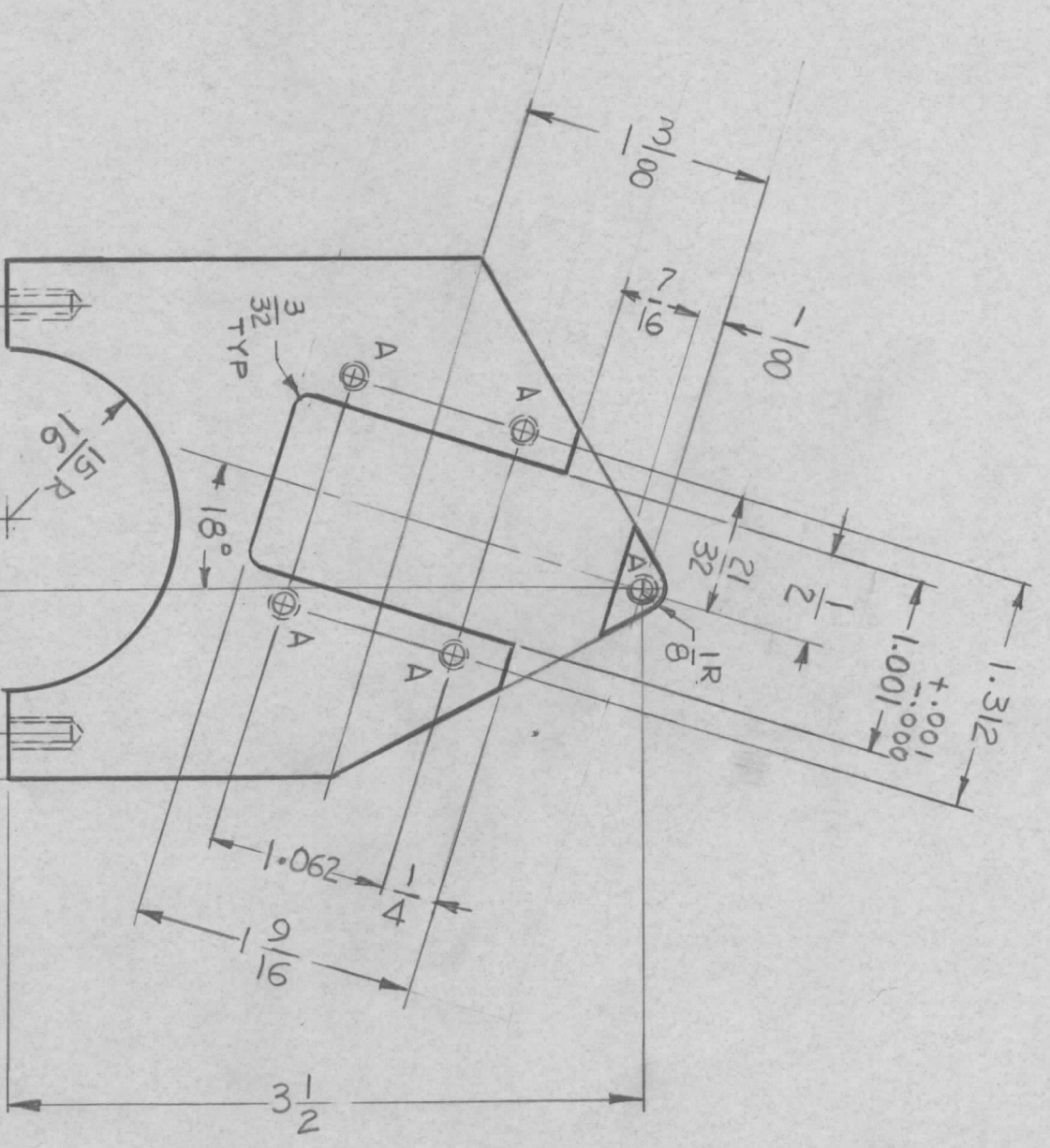
REQ'D.	ITEM	PART NUMBER	DESCRIPTION	SYMBOL
2	2	NT129-632-4	NUTS PLAIN, SPLINE	A
6	1	NT129-832-4	NUT, PLAIN, SPLINE	C

LIST OF MATERIAL		THE TECHNICAL MATERIEL CORP.	
MATERIAL	3/4 X 3/4 X 1/16 THK EX TRUDED ALUM. ANGLE (ALCOA DIA # 472)	TITLE	BRACKET, REINFORCING-REAR
FINISH	YELLOW IRIDITE 5904	MAMARONECK, NEW YORK	

UNLESS OTHERWISE SPECIFIED DIMENSIONS ARE IN INCHES AND INCLUDE CHEMICALLY APPLIED OR PLATED FINISHES		DRAWN		DATE		FINAL APPROVAL	
DECIMALS	TOLERANCES	CHECKER	DATE	DATE	DATE	DATE	DATE
.X ± .05	± 1/64	J.L.	2/9/65	2/9/65	2/9/65	2/9/65	2/9/65
.XX ± .01	ANGLES	ELECT. DES.					
.XXX ± .005	FRACTIONS	MECH. DES.					
	± 0° 30'	W. JORDAN					

NOTES

REVISIONS						
SYM	DESCRIPTION	DATE	E.M.N. NO.	DRAFT	CHKD	APPD
X	EXPER. RELEASE	12-9-64		C.D.L		
X1	15/16 R WAS 15/32	12-24-64		C.D.L		
Ø	ORIGINAL RELEASE FOR PRODUCTION	4-9-65		J.F.		



METAL STAMP TMC P/NO
1/8 HIGH GOTHIC W/LATEST
REV. LETTER.

HOLE	DESCRIPTION	REQ.
A	DRILL & TAP 4-40	5
B	DRILL & TAP 6-32 X 3/8 DEEP	2

Q'TY./UNIT		MODEL USED ON		ASS'Y. NO.	
1		VLRB-1			
SCALE		CODE			
1:1		A			

THE CONTENTS OF THIS DRAWING ARE THE EXCLUSIVE PROPERTY OF THE TECHNICAL MATERIEL CORP. ITS UNAUTHORIZED USE OR REPRODUCTION IN WHOLE OR IN PART IS STRICTLY FORBIDDEN.

REQ'D.	ITEM	PART NUMBER	DESCRIPTION	SYMBOL
O.POSE	1/2 THK ALUMINUM	2024-T3	THE TECHNICAL MATERIEL CORP. MAMARONECK, NEW YORK	
	FINISH	S404 YEL IRIDITE	TITLE CAM FOLLOWER SUPPORT	

UNLESS OTHERWISE SPECIFIED	DRAWN	DATE	FINAL APPROVAL	DATE
DIMENSIONS ARE IN INCHES AND INCLUDE CHEMICALLY APPLIED OR PLATED FINISHES	G.D.L	12-9-64	<i>[Signature]</i>	
DECIMALS .X ± .05 .XX ± .01 .XXX ± .005	CHECKED	DATE		
TOLERANCES	ELECT. DES.	DATE		
FRACTIONS ± 1/64 ANGLES ± 0° 30'	MECH. DES.	DATE		

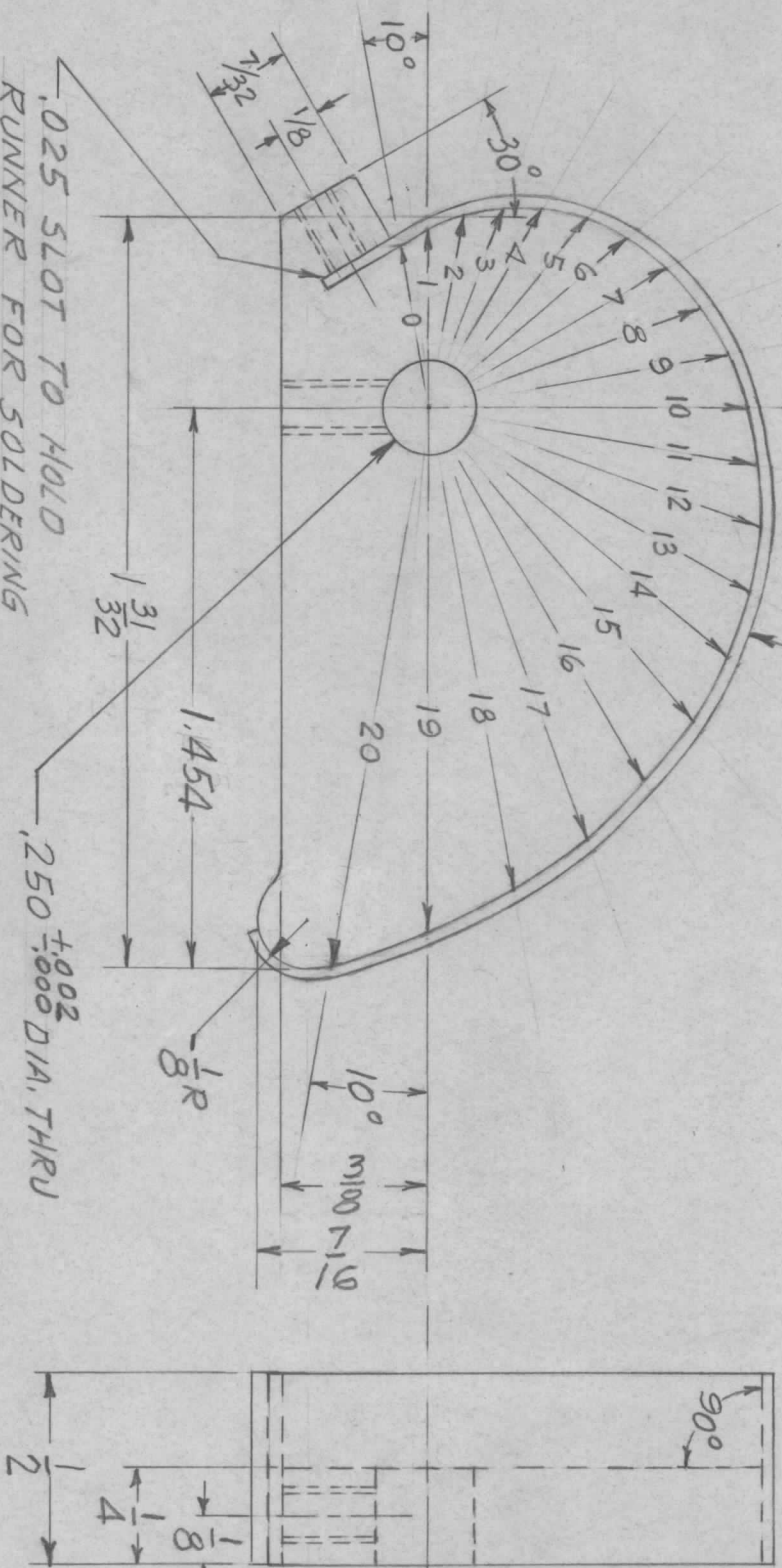
REPROVAL NO. 440H

NOTES

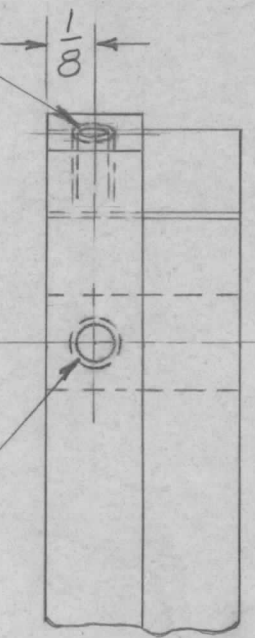
- 0 = .437
- 1 = .474
- 2 = .525
- 3 = .574
- 4 = .616
- 5 = .654
- 6 = .694
- 7 = .735
- 8 = .778
- 9 = .819
- 10 = .860
- 11 = .902
- 12 = .948
- 13 = 1.000
- 14 = 1.056
- 15 = 1.113
- 16 = 1.174
- 17 = 1.244
- 18 = 1.320
- 19 = 1.404
- 20 = 1.474

ANGULAR DISPLACEMENT
BETWEEN NOS. = 10°

1/2 X .025 TK. BERYLLIUM COPPER
SOLDERED TO PERIPHERY OF CAM
COPPER RUNNER TO BE HELD
90° TO CAM SURFACE



RUNNER - 1/2 X .025 BERYLLIUM COPPER



DR. ϕ TAP 4-40
(THRU CAM ONLY)

DR. ϕ TAP 6-32

NOTES

SYM		DESCRIPTION	DATE	E.M.N. NO.	DRAFT	CHKD	APPD
X	X1	DISPLACEMENT 07020 REDIMENSIONED					
X	X2	DISPLACEMENT 07020 REDIMENSIONED 1.454 DIM. WAS 1.532 DISPLACEMENT REDIMENSIONED 1.474 WAS .489, .525 WAS .539, .574 WAS .582, .616 WAS .622, .654 WAS .660, .694 WAS .699, .735 WAS .739, .778 WAS .779, .860 WAS .855, .902 WAS .900, .948 WAS .947, 1.000 WAS 1.001, 1.056 WAS 1.055, 1.113 WAS 1.109, 1.174 WAS 1.171, 1.244 WAS 1.245, 1.404 WAS 1.403, 1.474 WAS 1.479	4-20-65	X2	ALA		
	ϕ	ORIGINAL RELEASE FOR PRODUCTION	4/20/65		PLA		

QTY./UNIT	1	MODEL USED ON	VLRB-1	ASSY. NO.	
SCALE		CODE			

THE CONTENTS OF THIS DRAWING ARE THE EXCLUSIVE PROPERTY OF THE TECHNICAL MATERIEL CORP. ITS UNAUTHORIZED USE OR REPRODUCTION IN WHOLE OR IN PART IS STRICTLY FORBIDDEN.

REQ'D.	ITEM	PART NUMBER	DESCRIPTION	SYMBOL
	POSE		LIST OF MATERIAL	SK 3136-PM201
	MATERIAL	1/4 TK BRASS	THE TECHNICAL MATERIEL CORP.	
	FINISH	NICKEL PLATE	MAMARONECK, NEW YORK	
UNLESS OTHERWISE SPECIFIED DIMENSIONS ARE IN INCHES AND INCLUDE CHEMICALLY APPLIED OR PLATED FINISHES		TITLE		
DECIMALS .X ± .05		DRAWN D.A.C.		
.XX ± .01		CHECKED		
.XXX ± .005		ELECT. DES.		
FRACTIONS ± 1/64		MECH. DES.		
ANGLES ± 0° 30'		DATE		
		DATE		
		FINAL APPROVAL		
		DATE		
		SHEET		
		REV. LTR.		

HOLES

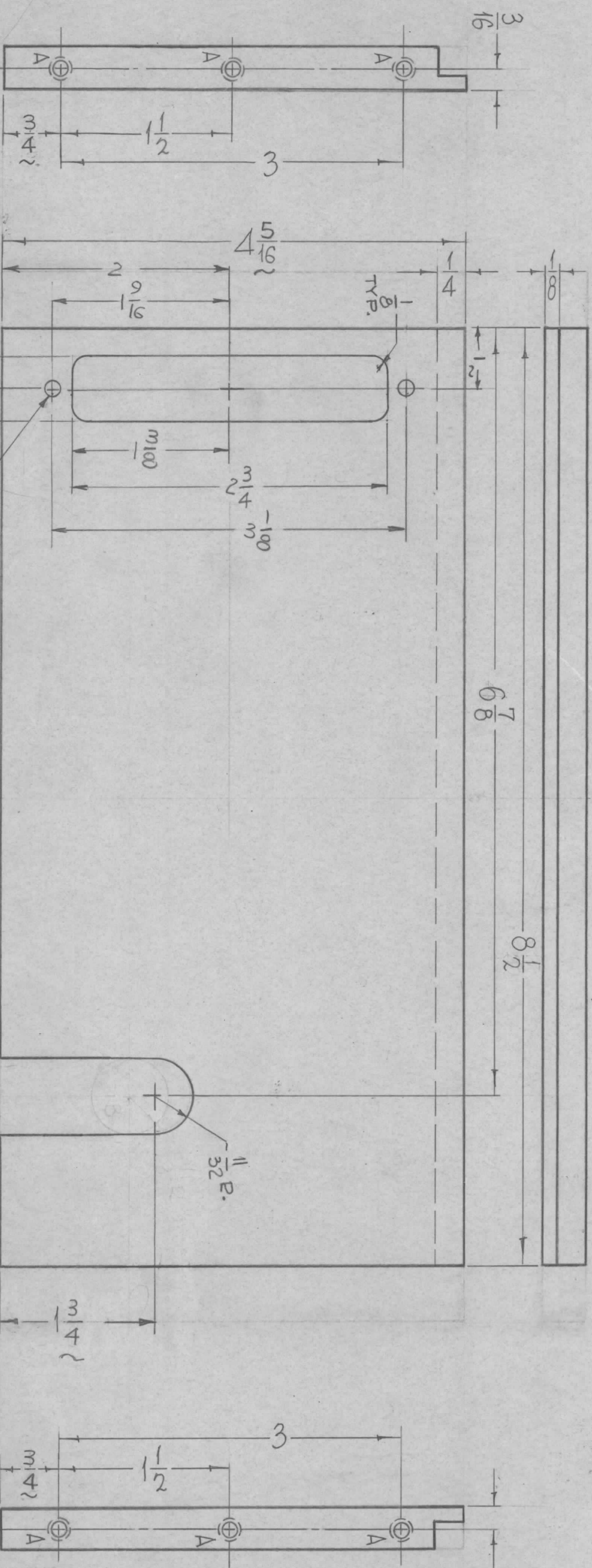
REQ.

A - DRILL & TAP 8-32 X 1/2 DP
 B - 1/16 DIA.

PM1178

SYM	DESCRIPTION	DATE	E.M.N. NO.	DRAFT	CHKD	APPD
X1	DIM 3/4 WERE 1/2, 4 5/16 WAS 4 1/4, 1 3/8 WAS 1 1/8 A HOLES WERE 10-32 TAP.	4-1-65	X1	SRG	OK	
X2	DIM. 1 3/4 WAS 1 3/8 - HOLE CONNECTOR ADDED	5-4-65	X2	G.B.L.		
Ø	ORIGINAL RELEASE FOR PRODUCTION	5-5-67	Ø	R.G.		

REVISIONS



REF.: LD1927

REQ'D.	ITEM	PART NUMBER	DESCRIPTION	SYMBOL
	F. BUDETTI		LIST OF MATERIAL	PM14

MATERIAL	FINISH	TITLE
3/8 THICK, ALUMINUM, 2024-T3	SAO4 IRIDIOTE, 14-2 AL-COAT	PLATE, FRONT

THE TECHNICAL MATERIEL CORP.
 MAMARONECK, NEW YORK

Q'TY./UNIT	MODEL USED ON	ASS'Y. NO.
1	T STE 10K	
SCALE	CODE	

NOTES

THE CONTENTS OF THIS DRAWING ARE THE EXCLUSIVE PROPERTY OF THE TECHNICAL MATERIEL CORP. ITS UNAUTHORIZED USE OR REPRODUCTION IN WHOLE OR IN PART IS STRICTLY FORBIDDEN.

DRAWN	CHECKED	ELECT. DES.	MECH. DES.	DATE	DATE	DATE	DATE
John C. Biale		J.S.	J.S.				

FINAL APPROVAL	DATE	REV. LTR.
PM1178	5/5/67	Ø