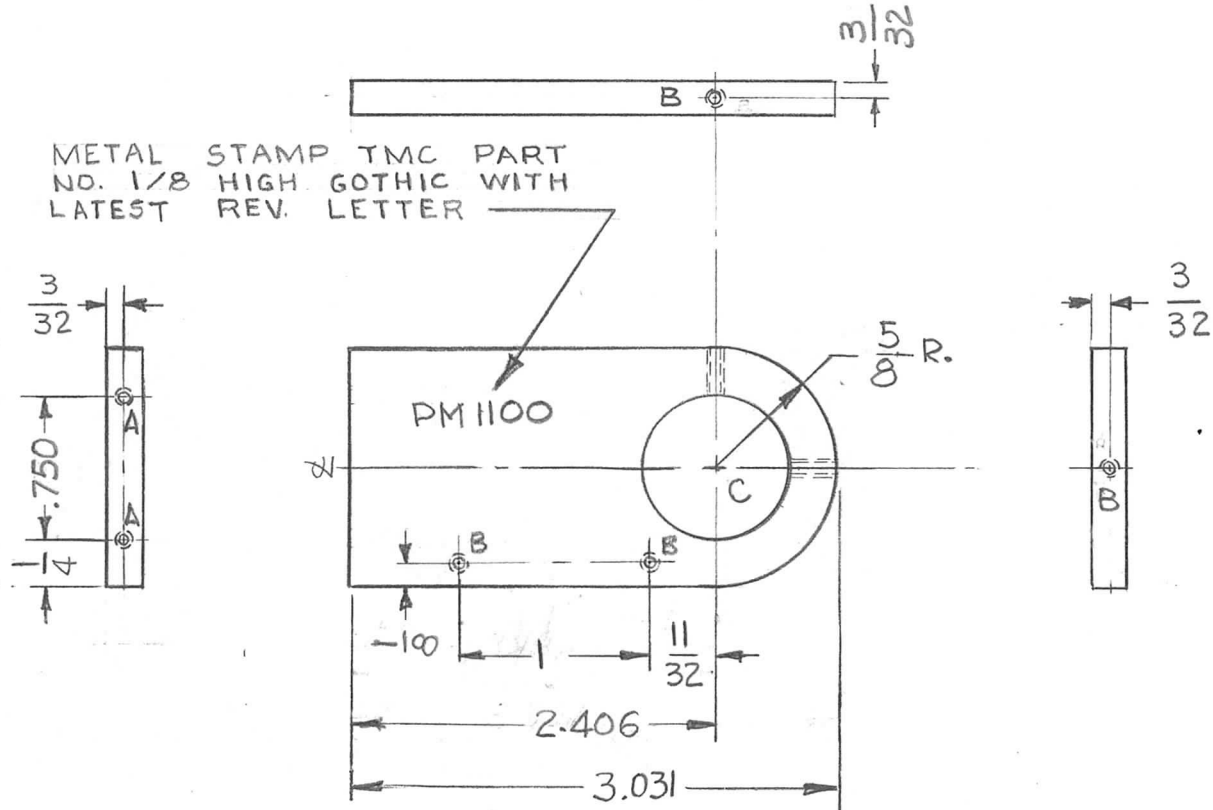


REQ. PER UNIT	USED ON			PM 1100	Ø
	MODEL	ASS'Y. NO.	DATE		
1	VLRB-1		8/28/64		

METAL STAMP TMC PART NO. 1/8 HIGH GOthic WITH LATEST REV. LETTER

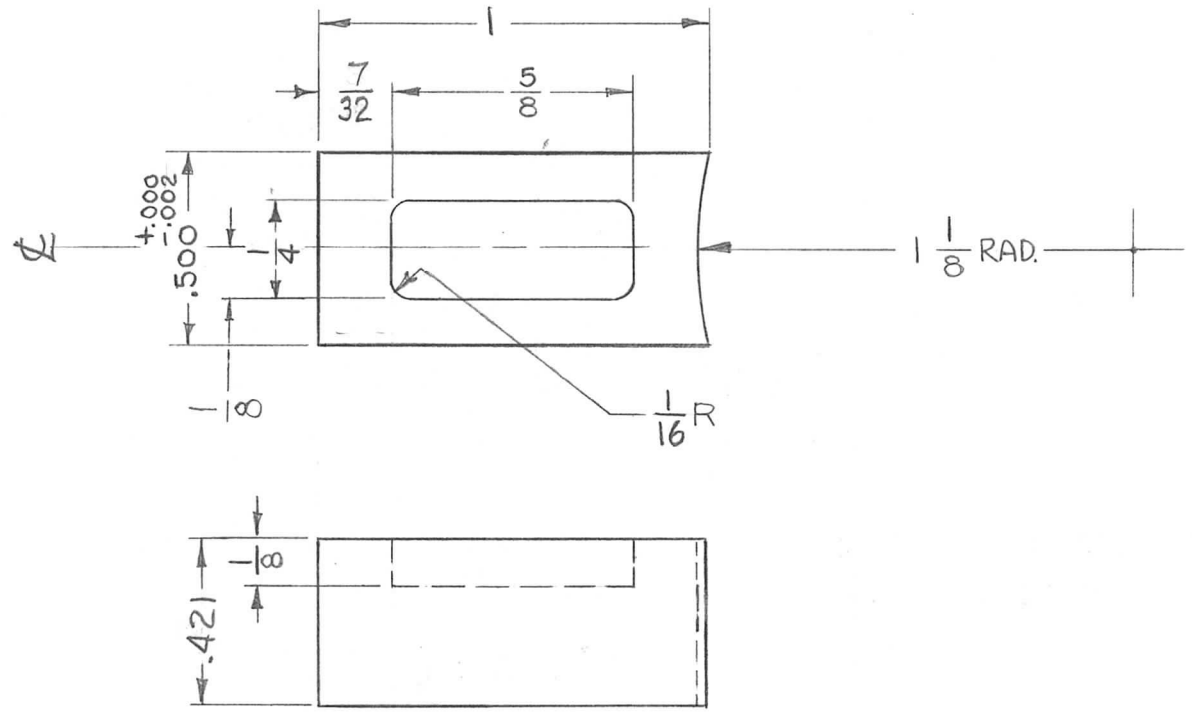


HOLES:
 A- DR & TAP 4-40 X 1/2 DEEP (2 REQ)
 B- DR & TAP 4-40 THRU (4 REQ.)
 C- .750 DIA. (1 REQ.)

REMOVE ALL BURRS AND SHARP EDGES

SYM	DESCRIPTION	DATE	CH. NO.	DRAFTS	CHECKER	ENG. APP.	REQ. ITEM	PART NO.	DESCRIPTION	SYMBOL		
Ø	ORIGINAL RELEASE FOR PRODUCTION	4.9.65	Ø	gfi				3/16 THICK	THE TECHNICAL MATERIEL CORP. MAMARONECK, NEW YORK	Ø		
X ₁	(2) 4-40 HOLES ADDED	10/28/64						STOCK SIZE				
X	EXPERIMENTAL REL.	8/28/64		lob				ALUMINUM				
								MATERIAL	BRACKET DIAL			
UNLESS OTHERWISE SPECIFIED DIMENSIONS ARE IN INCHES AND INCLUDE CHEMICALLY APPLIED OR PLATED FINISHES		SCALE					2024-T3		lob	@	Ø	
		1:1					TYPE & TEMPER	HEAT TREAT. SPEC.	DRAWN	CHECKED	FINAL APPROVAL	
DECIMALS .X ± .05 .XX ± .01 .XXX ± .005		FRACTIONS ± 1/64 ANGLES ± 0° 30'		CODE A			S404 YEL. IRIDITE				PM 1100	Ø
TOLERANCES					FINISH & SPEC. NO.		ELEC. DES. APP.		MECH. DES. APP.			

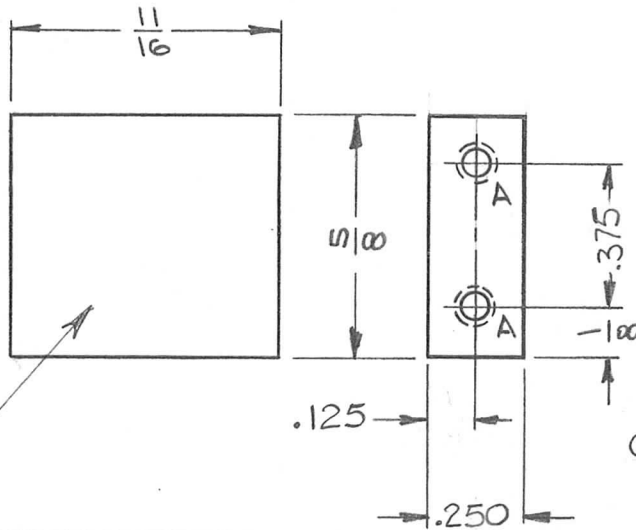
REQ. PER UNIT	USED ON			PM 1101	Ø
	MODEL	ASS'Y. NO.	DATE		
1	VLRB-1		7-1-64		



REMOVE ALL BURRS AND SHARP EDGES

Ø ORIGINAL RELEASE FOR PRODUCTION				9/17/65	Ø	DVV	REQ. ITEM	PART NO.	T. KRUY	DESCRIPTION	POSE	SYMBOL
X2	S135 ADDED TO FINISH & SPEC NO.	9/14/65	-A	JC			AS NOTED		THE TECHNICAL MATERIEL CORP. MAMARONECK, NEW YORK			
X1	DIM .421 WAS 7/16 METAL STAMP NOTE DELETED	12-2-64		GD-L			STOCK SIZE		SLIDE, LOCK (YOKE)			
X	EXPER. RELEASE	7/1/64		LSB			BRASS					
SYM	DESCRIPTION	DATE	CH. NO.	DRAFTS	CHECKER	ENG. APP.	MATERIAL					
UNLESS OTHERWISE SPECIFIED DIMENSIONS ARE IN INCHES AND INCLUDE CHEMICALLY APPLIED OR PLATED FINISHES		SCALE		2:1			1/2 HARD	-H	LSB 7.1.64	JCS	Be	W. H. King
DECIMALS .X ± .05 .XX ± .01 .XXX ± .005		FRACTIONS ± 1/64 ANGLES ± 0° 30'		CODE A		TYPE & TEMPER		HEAT TREAT. SPEC.	DRAWN	CHECKED	FINAL APPROVAL	
TOLERANCES						S135 NICKEL PLATE					PM 1101	
						FINISH & SPEC. NO.		ELEC. DES. APP.	MECH. DES. APP.			

REQ. PER UNIT	USED ON			PM 1102	∅
	MODEL	ASS'Y. NO.	DATE		
	VLRB-1		8-28-64		



HOLE	DESCRIPTION	REQ.
A	DRILL & TAP #2-56 x 1/4 DP.	4

OPPOSITE SIDE IDENTICAL

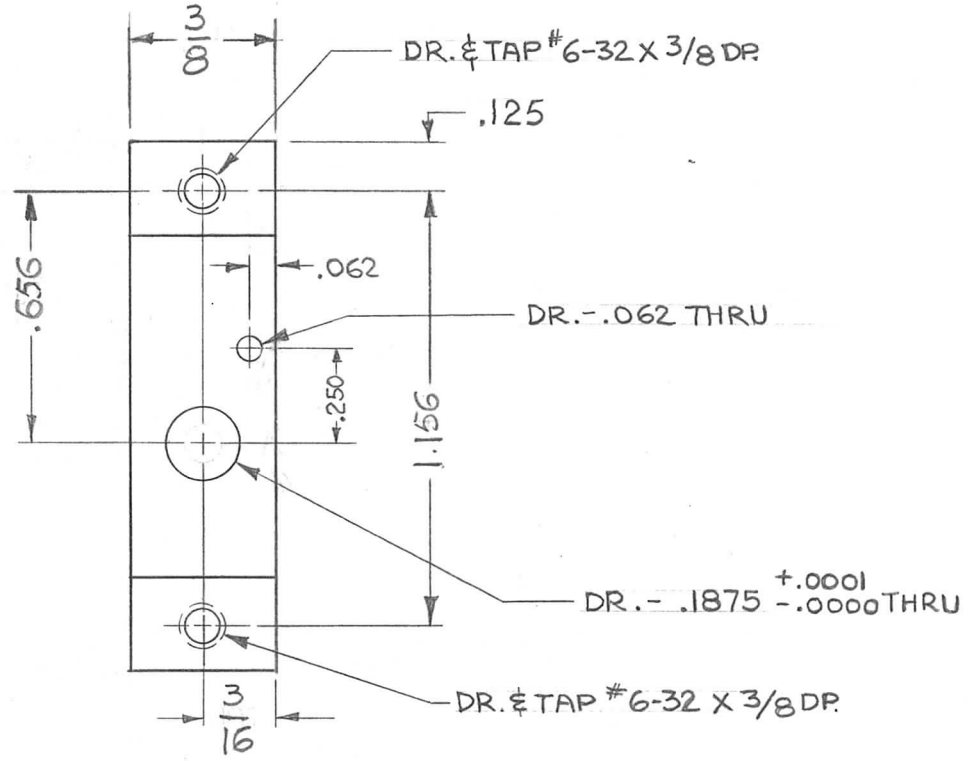
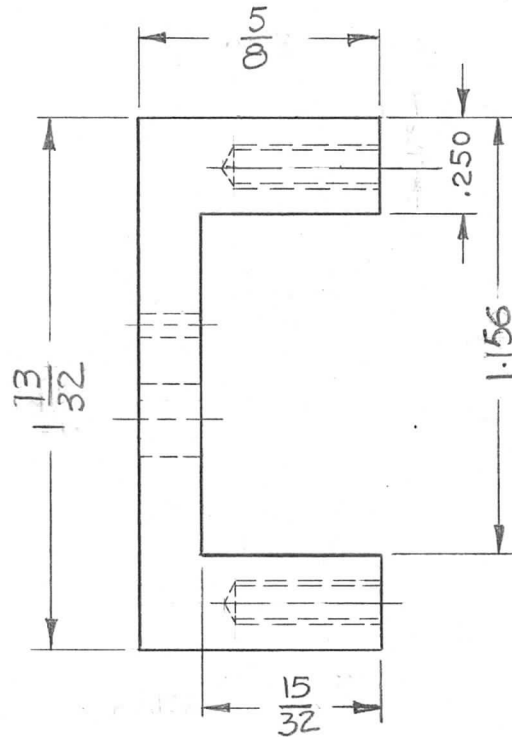
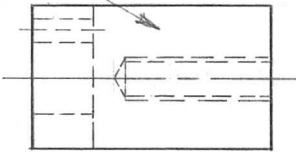
METAL STAMP TMC
PART NO. 1/8 HIGH
GOTHIC W/LATEST
REV. LETTER

REMOVE ALL BURRS AND SHARP EDGES

REQ.	ITEM	PART NO.	DESCRIPTION	SYMBOL								
∅	ORIGINAL RELEASE FOR PRODUCTION	9/1/65	POSE									
XI	DIMENSIONS IN DECIMAL WERE IN FRACTION	12-2-64	AS NOTED	THE TECHNICAL MATERIEL CORP. MAMARONECK, NEW YORK								
X	EXPER. RELEASE	8-28-64	STAINLESS STEEL	SPACER, SLIDE & INDICATOR								
SYM	DESCRIPTION	DATE	CH. NO.	DRAFTS	CHECKER	ENG. APP.	MATERIAL					
	UNLESS OTHERWISE SPECIFIED DIMENSIONS ARE IN INCHES AND INCLUDE CHEMICALLY APPLIED OR PLATED FINISHES	SCALE	2:1				#303					
DECIMALS	FRACTIONS	CODE					TYPE & TEMPER	HEAT TREAT. SPEC.	DRAWN	CHECKED	FINAL APPROVAL	
.X ± .05	± 1/64	A					5104 - PASSIVATE					PM 1102
.XX ± .01	ANGLES						FINISH & SPEC. NO.		ELEC. DES. APP.	MECH. DES. APP.		∅
.XXX ± .005	± 0° 30'											

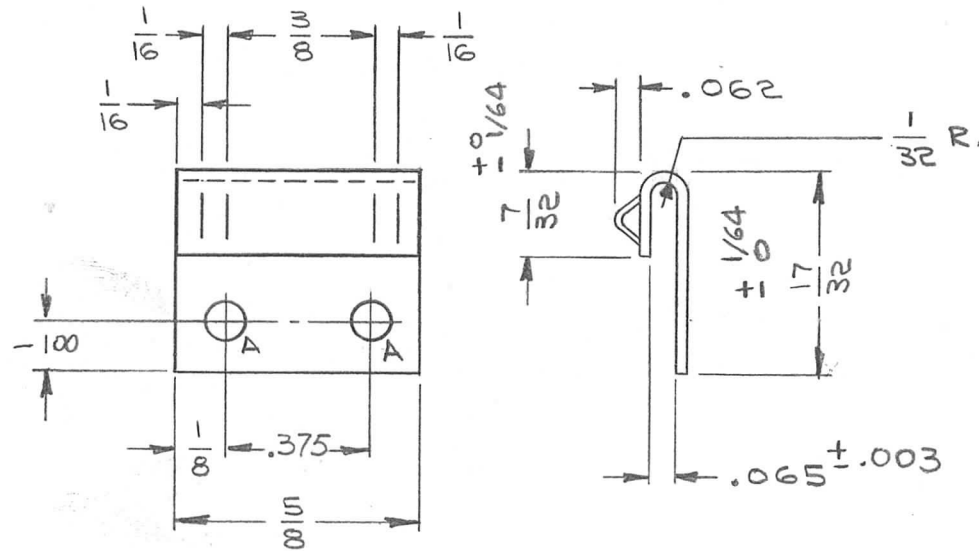
RUBBER STAMP TMC PART
NO. 1/16 HIGH GOTHIC W/LATEST
REV. LETTER PER TMC SPEC S727

REQ. PER UNIT	USED ON			PM 1103	Ø
	MODEL	ASS'Y. NO.	DATE		
1	VLRB-1		7-1-64		



Ø	ORIGINAL RELEASE FOR PRODUCTION	9/7/65	Ø	J.V.V.			REQ. ITEM	PART NO.	T. KRUY	DESCRIPTION	POSE	SYMBOL	
XZ	H. HARD ADD TO TYPE 6 TEMPER	9/14/65	—	JC			AS NOTED		THE TECHNICAL MATERIEL CORP. MAMARONECK, NEW YORK				
XI	RUBBER STAMP WAS METAL STAMP 1/8 HIGH LETTER - REDIMENSIONED	12-1-64		G.D.L.			STOCK SIZE		YOKE, LOCK SHAFT				
X	EXPER. RELEASE	7/1/64		NB			BRASS						
SYM	DESCRIPTION	DATE	CH. NO.	DRAFTS	CHECKER	ENG. APP.	MATERIAL						
UNLESS OTHERWISE SPECIFIED DIMENSIONS ARE IN INCHES AND INCLUDE CHEMICALLY APPLIED OR PLATED FINISHES		SCALE 2:1					HALF HARD		NB 7.1.64	QC/B	Joe M. Haney		
TOLERANCES		FRACTIONS ± 1/64		CODE A		TYPE & TEMPER		HEAT TREAT. SPEC.	DRAWN	CHECKED	FINAL APPROVAL		
DECIMALS .X ± .05 .XX ± .01 .XXX ± .005		ANGLES ± 0° 30'				S135 NICKEL, PLATE					PM 1103		
						FINISH & SPEC. NO.		ELEC. DES. APP.	MECH. DES. APP.				

REQ. PER UNIT	USED ON			PM1105	Ø
	MODEL	ASS'Y. NO.	DATE		
1	VLRB-1		8-28-64		



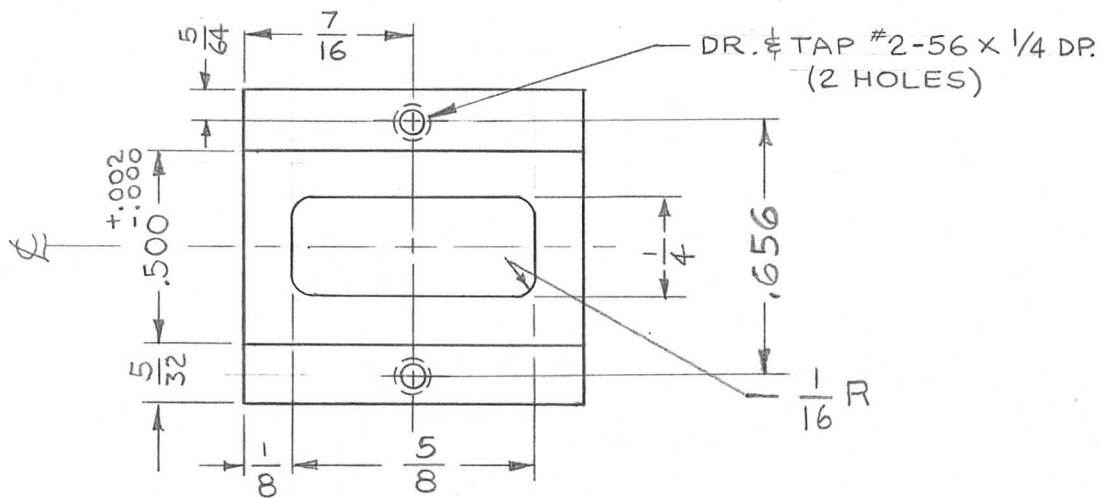
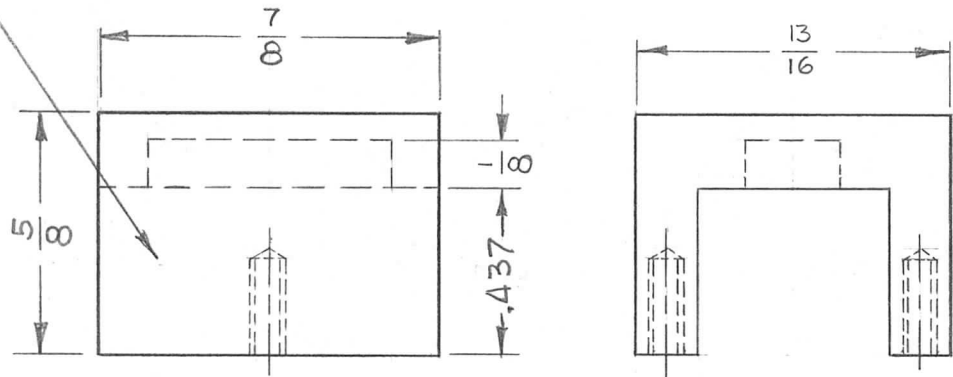
HOLE	DESCRIPTION	REQ.
A	3/32 DIA	2

REMOVE ALL BURRS AND SHARP EDGES

SYM	DESCRIPTION	DATE	CH. NO.	DRAFTS	CHECKER	ENG. APP.	REQ. ITEM	PART NO.	KRUY/POSE DESCRIPTION	SYMBOL		
Ø	ORIGINAL RELEASE FOR DISTRIBUTION	9/14/65						.031	THE TECHNICAL MATERIEL CORP. MAMARONECK, NEW YORK			
XI	METAL STAMP DELETED	12-2-64			G.D.L.			STOCK SIZE				
X	EXPER. RELEASE	8-28-64	X		EB			STAINLESS STEEL	SLIDE INDICATOR			
								MATERIAL				
	UNLESS OTHERWISE SPECIFIED DIMENSIONS ARE IN INCHES AND INCLUDE CHEMICALLY APPLIED OR PLATED FINISHES	SCALE	2:1					#303		J. Swain		
							TYPE & TEMPER	HEAT TREAT. SPEC.	DRAWN	CHECKED	FINAL APPROVAL	
DECIMALS .X ± .05 .XX ± .01 .XXX ± .005	TOLERANCES	FRACTIONS ± 1/64 ANGLES ± 0° 30'	CODE	A				5104	PASSIVATE			PM 1105
							FINISH & SPEC. NO.		ELEC. DES. APP.	MECH. DES. APP.		

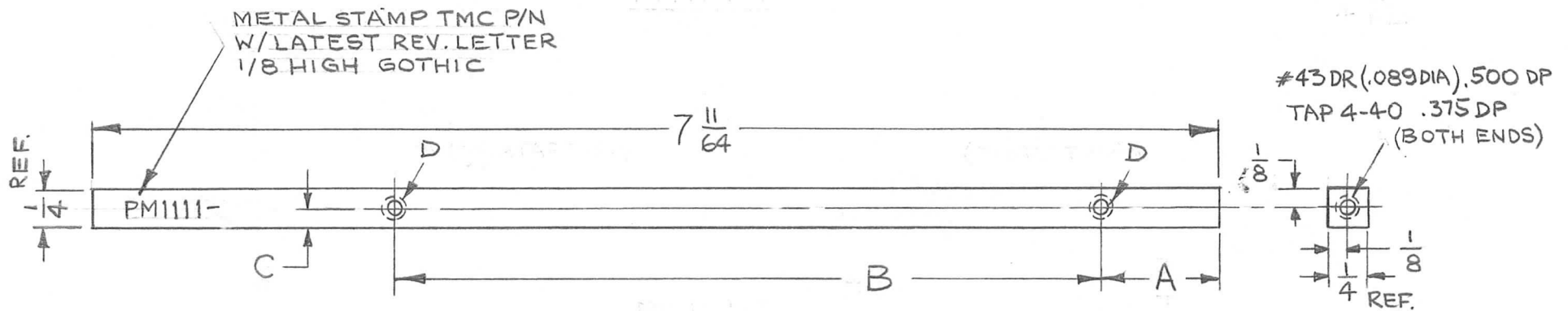
RUBBER STAMP TMC PART NO.
1/8 HIGH GOTHIC W/LATEST
REV. LETTER

REQ. PER UNIT	USED ON			PM 1106	⊗
	MODEL	ASS'Y. NO.	DATE		
1	VLRB-1		7/1/64		



REQ. ITEM	PART NO.	T.KRUY	DESCRIPTION	SYMBOL									
⊗	ORIGINAL RELEASE FOR PRODUCTION	4.9.65	⊗	⊗									
X1	DIM. .437 WAS 7/16 & RUBBER STAMP WAS METAL STAMP	12-2-64	6 D.L.										
X	EXPER. RELEASE	7/1/64	WJB										
SYM	DESCRIPTION	DATE	CH. NO.	DRAFTS	CHECKER	ENG. APP.	MATERIAL	TYPE & TEMPER	HEAT TREAT. SPEC.	DRAWN	CHECKED	FINAL APPROVAL	
	UNLESS OTHERWISE SPECIFIED DIMENSIONS ARE IN INCHES AND INCLUDE CHEMICALLY APPLIED OR PLATED FINISHES	SCALE	2:1					BRASS	1/2 HARD		WJB 7.1.64	@	⊗
DECIMALS	FRACTIONS	CODE						NICKEL PLATED					
.X ± .05	± 1/64	A						FINISH & SPEC. NO.					
.XX ± .01	ANGLES												
.XXX ± .005	± 0° 30'												
	TOLERANCES												PM 1106
													⊗

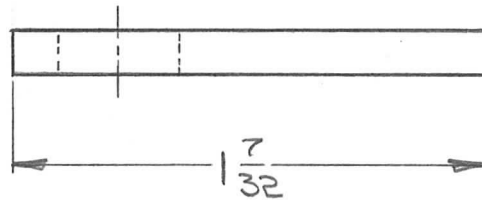
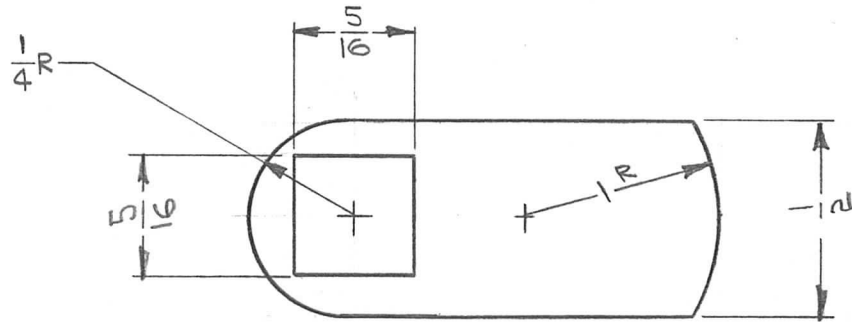
TMC P/N	REQ. PER UNIT	A	B	C	D	REQ. PER UNIT	USED ON				
							MODEL	ASS'Y. NO.	DATE		
PM1111-1	2	-	-	-	-	SEE CHART	PFCB-1			PM1111	Ø
PM1111-2	2	3/4	4 1/2	1/8	#4-40 THRU						



REMOVE BURRS & SHARP EDGES

REQ.	ITEM	PART NO.	O POSE				DESCRIPTION	SYMBOL
		T/4 SQ. BAR	THE TECHNICAL MATERIEL CORP.					
		STOCK SIZE	MAMARONECK, NEW YORK					
Ø	ORIGINAL RELEASE FOR PRODUCTION	11-30-64	Ø	Ø				
X ₁	REDRAWN W/CHANGES	10.17.64	X ₁	WB				
SYM	DESCRIPTION	DATE	CH. NO.	DRAFTS	CHECKER	ENG. APP.		
UNLESS OTHERWISE SPECIFIED DIMENSIONS ARE IN INCHES AND INCLUDE CHEMICALLY APPLIED OR PLATED FINISHES		SCALE						
		1:1						
DECIMALS	FRACTIONS	CODE						
.X ± .05	± 1/64	A						
.XX ± .01	ANGLES							
.XXX ± .005	± 0° 30'							
TOLERANCES								
		2024 T4		10.17.64		WB @ 10-22-64 J.S.		
		TYPE & TEMPER		HEAT TREAT. SPEC.		DRAWN		
		YELLOW IRIDITE				CHECKED		
		FINISH & SPEC. NO.		ELEC. DES. APP.		MECH. DES. APP.		
						FINAL APPROVAL		
						PM1111		
						Ø		

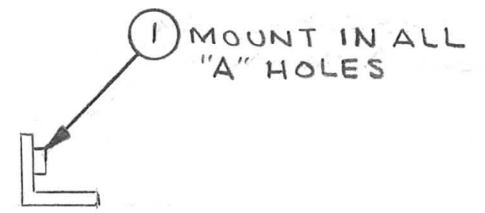
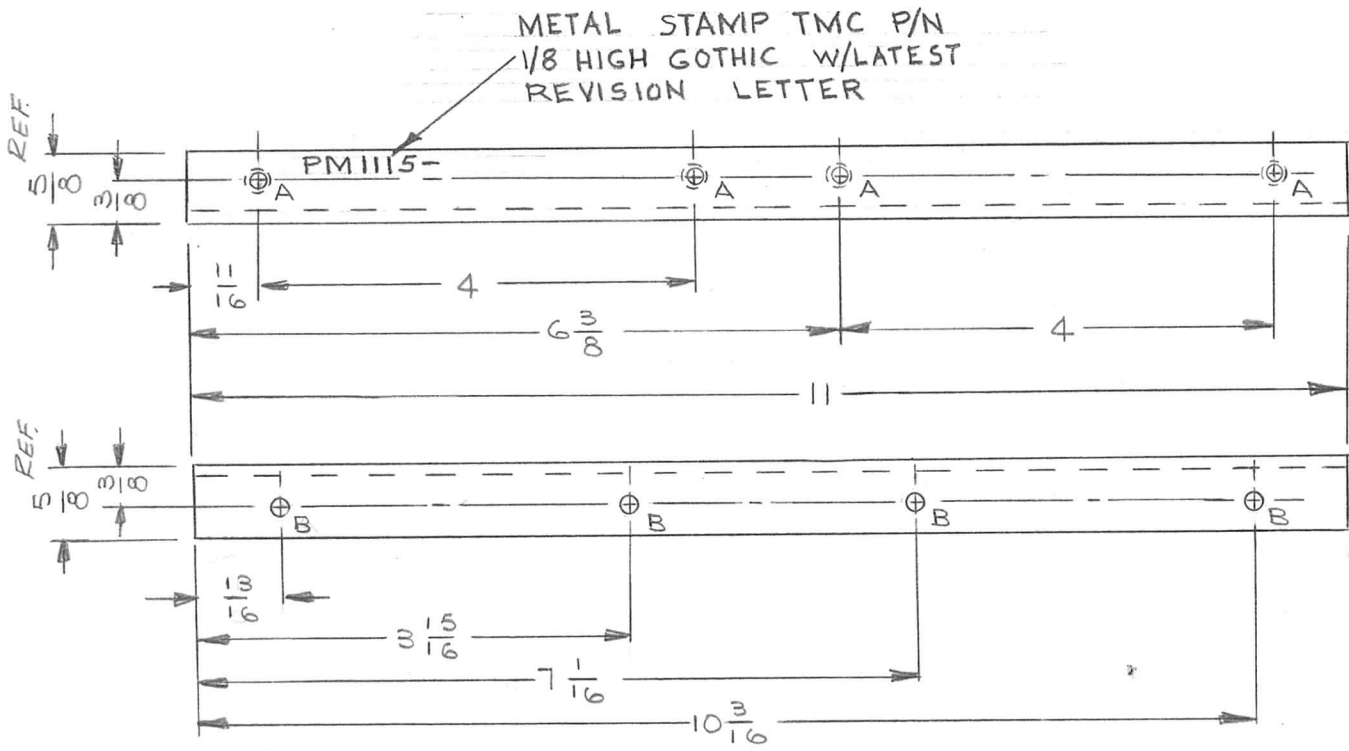
REQ. PER UNIT	USED ON			PM1113	Ø
	MODEL	ASS'Y. NO.	DATE		
1	RAK-1022	A3716	10-14-64		



REMOVE BURRS & SHARP EDGES

REQ. ITEM	PART NO.	STURMER	DESCRIPTION	SYMBOL						
	1/8		THE TECHNICAL MATERIEL CORP. MAMARONECK, NEW YORK							
Ø	ORIGINAL RELEASE FOR PRODUCTION	11-25-64	Ø JL							
X	EXPER. RELEASE	10-14-64	X Jsem							
SYM	DESCRIPTION	DATE	CH. NO.	DRAFTS	CHECKER	ENG. APP.	MATERIAL			
UNLESS OTHERWISE SPECIFIED DIMENSIONS ARE IN INCHES AND INCLUDE CHEMICALLY APPLIED OR PLATED FINISHES		SCALE		2:1		COLD ROLLED		Jsem @	RJC	
DECIMALS .X ± .05 .XX ± .01 .XXX ± .005	TOLERANCES	FRACTIONS ± 1/64 ANGLES ± 0° 30'	CODE A	TYPE & TEMPER		HEAT TREAT. SPEC.	DRAWN	CHECKED	FINAL APPROVAL	
				5135-NICKEL PLATE				11-25-64	PM1113	Ø
				FINISH & SPEC. NO.		ELEC. DES. APP.	MECH. DES. APP.			

REQ. PER UNIT	USED ON			PM1115	⊗
	MODEL	ASS'Y. NO.	DATE		
1	RTMU-1	A3909	6/24/64		

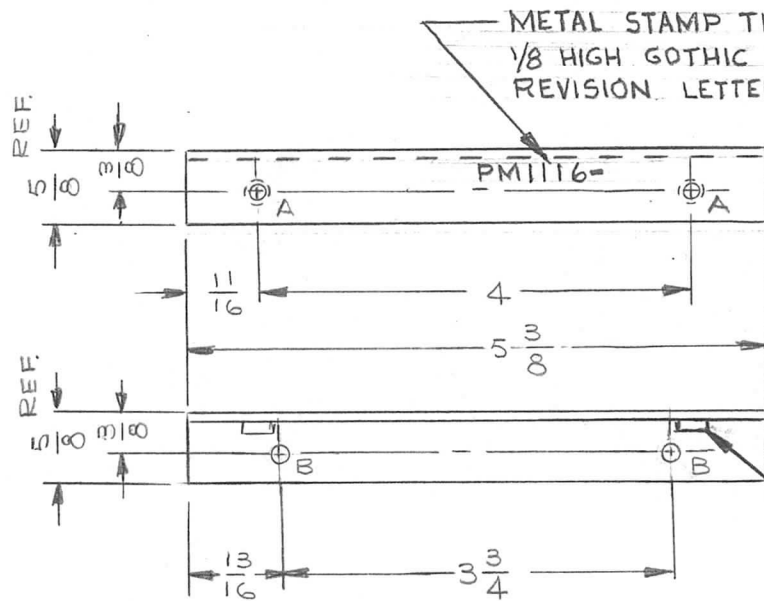


HOLE LEGEND		
HOLE	DESCRIPTION	REQ'D
A	.221-.224 DIA	4
B	3/16 DIA	4

REMOVE ALL BURRS & SHARP EDGES.

4	1	NT-129-832-6	NUT, PLAIN, SPLINE TYPE			
REQ. ITEM	PART NO.		EATON	DESCRIPTION SK 3071 PM7		SYMBOL
⊗	ORIGINAL RELEASE FOR PRODUCTION	1-18-65	⊗	⊗	JM	
X	EXPERIMENTAL RELEASE	11/6/64				
SYM	DESCRIPTION	DATE	CH. NO.	DRAFTS	CHECKER	ENG. APP.
UNLESS OTHERWISE SPECIFIED DIMENSIONS ARE IN INCHES AND INCLUDE CHEMICALLY APPLIED OR PLATED FINISHES		SCALE	NONE			
DECIMALS .X ± .05 .XX ± .01 .XXX ± .005	TOLERANCES	FRACTIONS ± 1/64 ANGLES ± 0° 30'	CODE	A		
EXTRUDED ANGLE 5/8 X 5/8 X 1/8 THK STOCK SIZE		ALUMINUM		MATERIAL		
6063 T5		—		JL	Jm @ RJC	
TYPE & TEMPER		HEAT TREAT. SPEC.		DRAWN	CHECKED	FINAL APPROVAL
YELLOW IRIDITE PER S404		F.S. Eaton 1/18/65		W. J. JORDAN 1/18/65	PM1115 ⊗	
FINISH & SPEC. NO.		ELEC. DES. APP.		MECH. DES. APP.		

REQ. PER UNIT	USED ON			PM1116	⊕
	MODEL	ASS'Y. NO.	DATE		
1	RTMU-1	A3909	6/24/64		



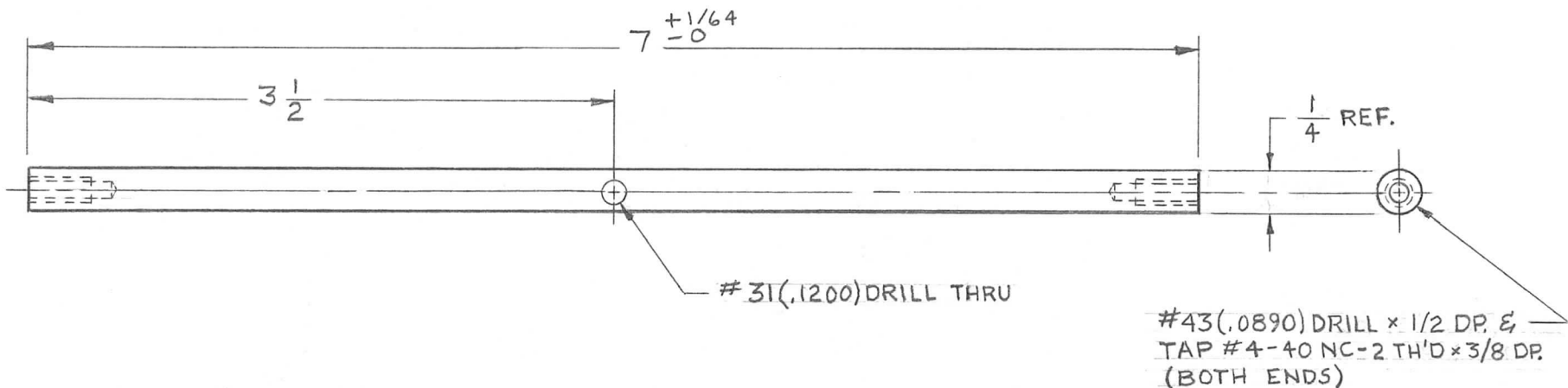
HOLE LEGEND		
HOLE	DESCRIPTION	REQ'D
A	.221 - .224 DIA	2
B	3/16 DIA	2

1 MOUNT IN ALL "A" HOLES

REMOVE ALL BURRS & SHARP EDGES.

						2	1	NT-129-832-6	NUT, PLAIN SPLINE TYPE	A	
						REQ. ITEM		PART NO.	EATON	DESCRIPTION SK3071PM8	SYMBOL
								EXTRUDED ANGLE 5/8 X 5/8 X 1/8 THK STOCK SIZE	THE TECHNICAL MATERIEL CORP. MAMARONECK, NEW YORK		
⊕	ORIGINAL RELEASE FOR PRODUCTION	1-18-65	⊕	JL	JM			ALUMINUM	BRACKET, SUPPORT - LEFT SIDE (P.C. CARD BIN)		
X	EXPER. RELEASE	6-22-64		JL							
SYM	DESCRIPTION	DATE	CH. NO.	DRAFTS	CHECKER	ENG. APP.					
UNLESS OTHERWISE SPECIFIED DIMENSIONS ARE IN INCHES AND INCLUDE CHEMICALLY APPLIED OR PLATED FINISHES		SCALE		NONE							
DECIMALS .X ± .05 .XX ± .01 .XXX ± .005	TOLERANCES	FRACTIONS ± 1/64 ANGLES ± 0° 30'	CODE A								
							6063 T5	—	J.L.	⊕ @ RJC	
							TYPE & TEMPER	HEAT TREAT. SPEC.	DRAWN	CHECKED	FINAL APPROVAL
							YELLOW IRIDITE PER S404		J. Jordan 1/18/65	W. Jordan 1/18/65	PM1116 ⊕
							FINISH & SPEC. NO.		ELEC. DES. APP.	MECH. DES. APP.	

REQ. PER UNIT	USED ON			PM 1117	Q
	MODEL	ASS'Y. NO.	DATE		
1	RTMU-1	A3908	10-22-64		
1	RTPA-1	A3684	10-22-64		



MATERIAL SPECIFICATIONS
 MATERIAL - 1/4 DIA ALUMINUM ROD, 2024-T4
 FINISH - YELLOW IRIDITE PER S404

REMOVE ALL BURRS & SHARP EDGES.

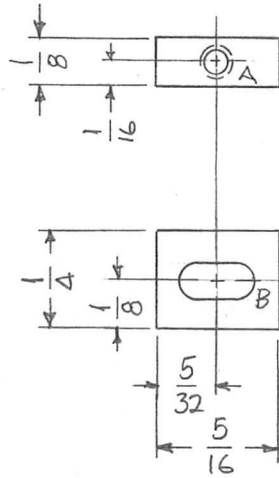
REQ. ITEM	PART NO.	EATON			DESCRIPTION SK 3071 PM-4	SYMBOL	
		STOCK SIZE		THE TECHNICAL MATERIEL CORP. MAMARONECK, NEW YORK			
Q	ORIGINAL RELEASE FOR PRODUCTION	1-18-65	Q	J.M.	GUIDE-HOOK, EXTRACTOR		
X	EXPER. RELEASE		JL				
SYM	DESCRIPTION	DATE	CH. NO.	DRAFTS	CHECKER	ENG. APP.	
UNLESS OTHERWISE SPECIFIED DIMENSIONS ARE IN INCHES AND INCLUDE CHEMICALLY APPLIED OR PLATED FINISHES		SCALE		1:1			
DECIMALS	FRACTIONS	CODE					
.X ± .05	± 1/64	A					
.XX ± .01	ANGLES						
.XXX ± .005	± 0° 30'						
TOLERANCES							
		TYPE & TEMPER		HEAT TREAT. SPEC.		FINISH & SPEC. NO.	
		J. Swore		J.M. @ R.C.		ELEC. DES. APP. MECH. DES. APP.	
		J.P. Cotton		W. JORDAN		PM 1117	
		1/18/65		1/18/65		Q	

REQ. PER UNIT	USED ON			PM 1118	Ø
	MODEL	ASS'Y. NO.	DATE		
2	VLRB-1		8/28/64		

HOLES

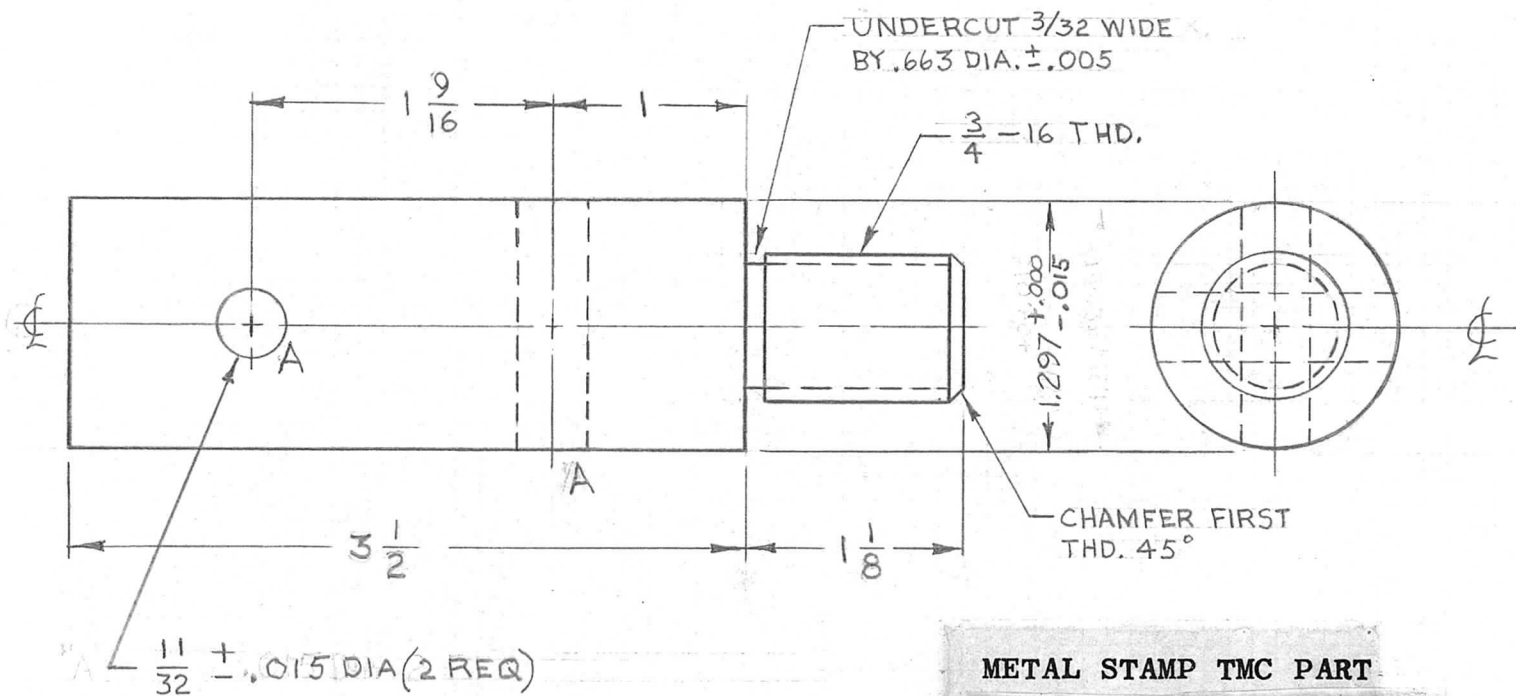
A - DR & TAP 2-56 THRU (1 REQ)

B - 7/64 x 3/16 SLOT THRU



REQ.	ITEM	PART NO.	T. KRUY	DESCRIPTION	POSE	SYMBOL
		AS NOTED		THE TECHNICAL MATERIEL CORP.		
		STOCK SIZE		MAMARONECK, NEW YORK		
Ø		ORIGINAL RELEASE FOR PRODUCTION	9/7/65	Ø	J.V.V.	
X		EXPERIMENTAL REL.	8/28/64	lob		
		STAINLESS STEEL		BLOCK FRONT		
		MATERIAL				
		303		lob	JCB	John Krueger
		TYPE & TEMPER	HEAT TREAT. SPEC.	DRAWN	CHECKED	FINAL APPROVAL
		S104-PASSIVATE				PM 1118
		FINISH & SPEC. NO.	ELEC. DES. APP.	MECH. DES. APP.		Ø
		UNLESS OTHERWISE SPECIFIED DIMENSIONS ARE IN INCHES AND INCLUDE CHEMICALLY APPLIED OR PLATED FINISHES	SCALE 2:1			
DECIMALS	FRACTIONS	CODE				
.X ± .05	± 1/64	A				
.XX ± .01	ANGLES					
.XXX ± .005	± 0° 30'					

REQ. PER UNIT	USED ON			PM1119	Ø
	MODEL	ASS'Y. NO.	DATE		
1	TTC-1				



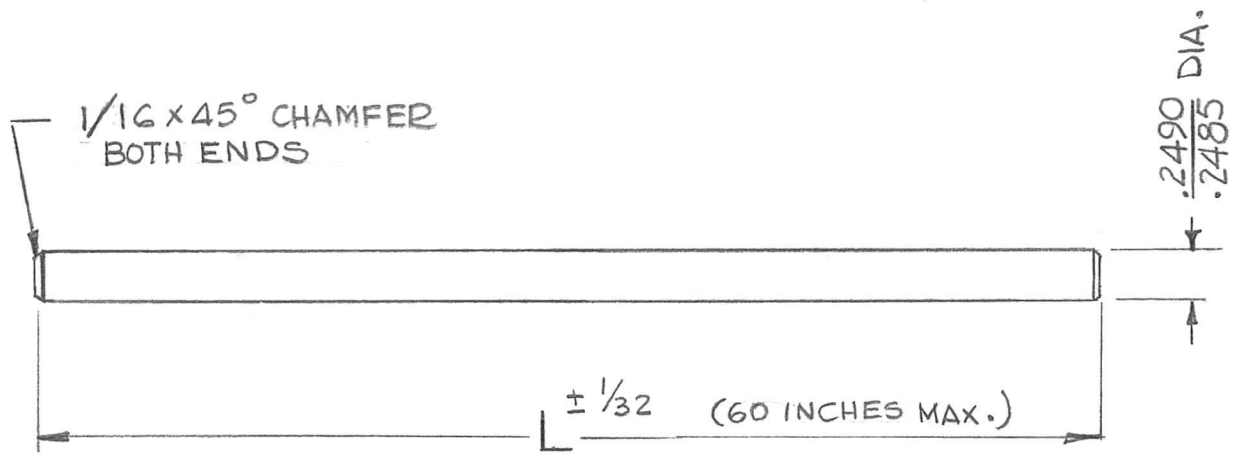
METAL STAMP TMC PART
 NO. 1/8 HIGH GOTHIC.
 WITH LATEST REV. LETTER.

REMOVE ALL BURRS AND SHARP EDGES.

						REQ. ITEM	PART NO.	A. DUDDELES	DESCRIPTION	SYMBOL		
							STOCK SIZE		THE TECHNICAL MATERIEL CORP. MAMARONECK. NEW YORK			
Ø	RELEASE FOR PROD.	9.30.64		9L			STAINLESS STEEL		ADAPTER, ANTENNA			
X	EXPERIMENTAL RELEASE	9.30.64		9L								
SYM	DESCRIPTION	DATE	CH. NO.	DRAFTS	CHECKER	ENG. APP.	MATERIAL					
UNLESS OTHERWISE SPECIFIED DIMENSIONS ARE IN INCHES AND INCLUDE CHEMICALLY APPLIED OR PLATED FINISHES		SCALE		1:1					9-Lwara @ 9-30-64	RAL		
DECIMALS X ± .05 .XX ± .01 .XXX ± .005	TOLERANCES	FRACTIONS ± 1/64 ANGLES ± 0° 30'	CODE A				TYPE & TEMPER	HEAT TREAT. SPEC.	DRAWN	CHECKED	FINAL APPROVAL	
							PASSIVATE		9-30-64		PM1119	Ø
							FINISH & SPEC. NO.		ELEC. DES. APP.	MECH. DES. APP.		

2111 UNKL

TMC PART No.	DIMENSION L (INCHES)	REQ. PER UNIT	USED ON			PM1121	Ø
		4	MODEL	ASS'Y. NO.	DATE		
PM 1121-1	5 3/4		VLRB-1				

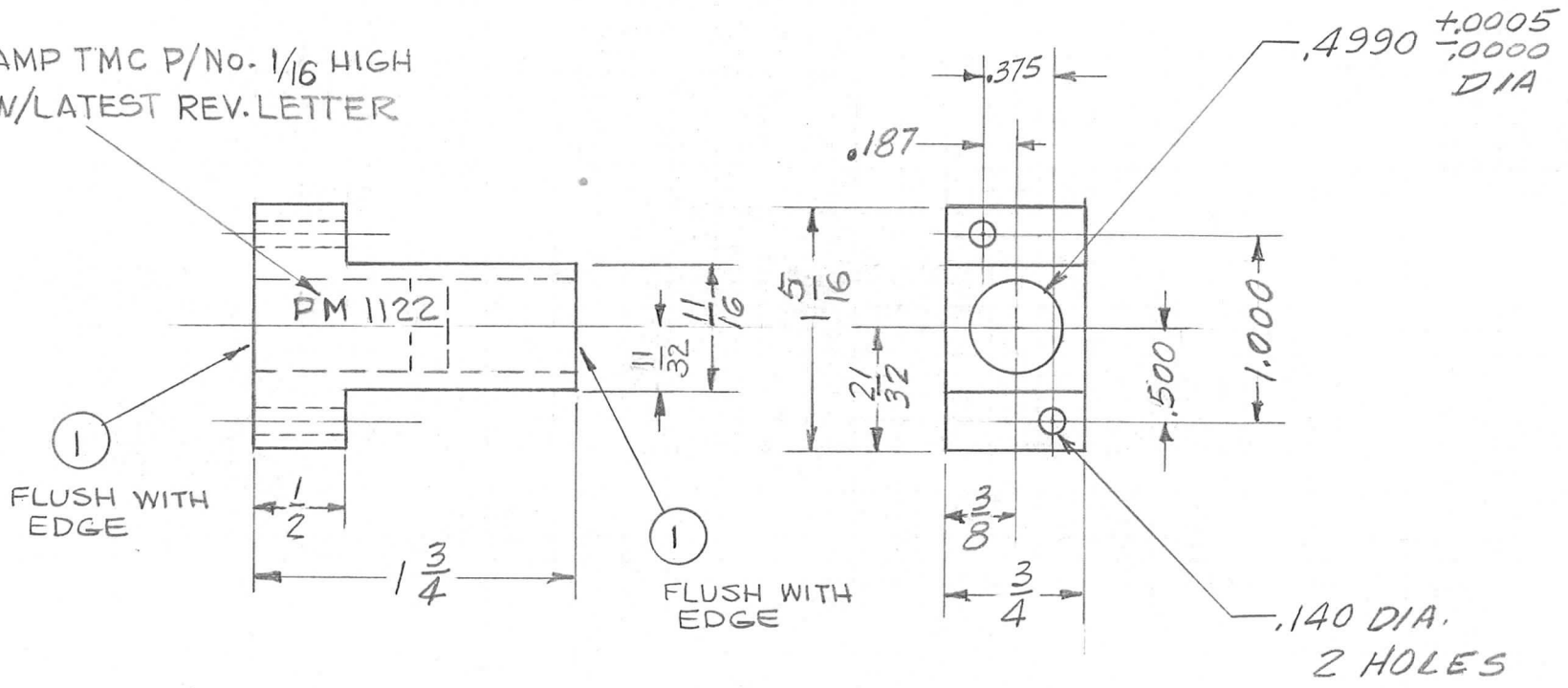


- SPECIFICATIONS -
 STRAIGHTNESS - WITHIN 0.002 INCH PER FOOT
 HARDNESS - 60 CASE (ROCKWELL 50-63 "C")
 MINIMUM DEPTH OF HARDNESS - 0.040 INCH
 USED WITH - TMC # BB132 BEARING, SLEEVE

Ø	ORIGINAL RELEASE FOR PRODUCTION	4.9.65	Ø	DR			REQ. ITEM	PART NO.	O.POSE	DESCRIPTION	SYMBOL	
X2	CHAMFER WAS 1/32 x 45°	2-2365	X2	GTH	only					THE TECHNICAL MATERIEL CORP. MAMARONECK. NEW YORK		
X1	SPEC. & CHART ADDED	12.7-61		C.D.L				STAINLESS STEEL		GUIDE, ROD		
X	EXPER. RELEASE											
SYM	DESCRIPTION	DATE	CH. NO.	DRAFTS	CHECKER	ENG. APP.	MATERIAL					
	UNLESS OTHERWISE SPECIFIED DIMENSIONS ARE IN INCHES AND INCLUDE CHEMICALLY APPLIED OR PLATED FINISHES	SCALE	DO NOT SCALE				440 C		D.A.C	@		
	DECIMALS .X ± .05 .XX ± .01 .XXX ± .005	TOLERANCES	FRACTIONS ± 1/64 ANGLES ± 0° 30'	CODE	S401-344		TYPE & TEMPER	HEAT TREAT. SPEC.	DRAWN	CHECKED	FINAL APPROVAL	
				C								
							FINISH & SPEC. NO.	ELEC. DES. APP.	MECH. DES. APP.		PM 1121 Ø	

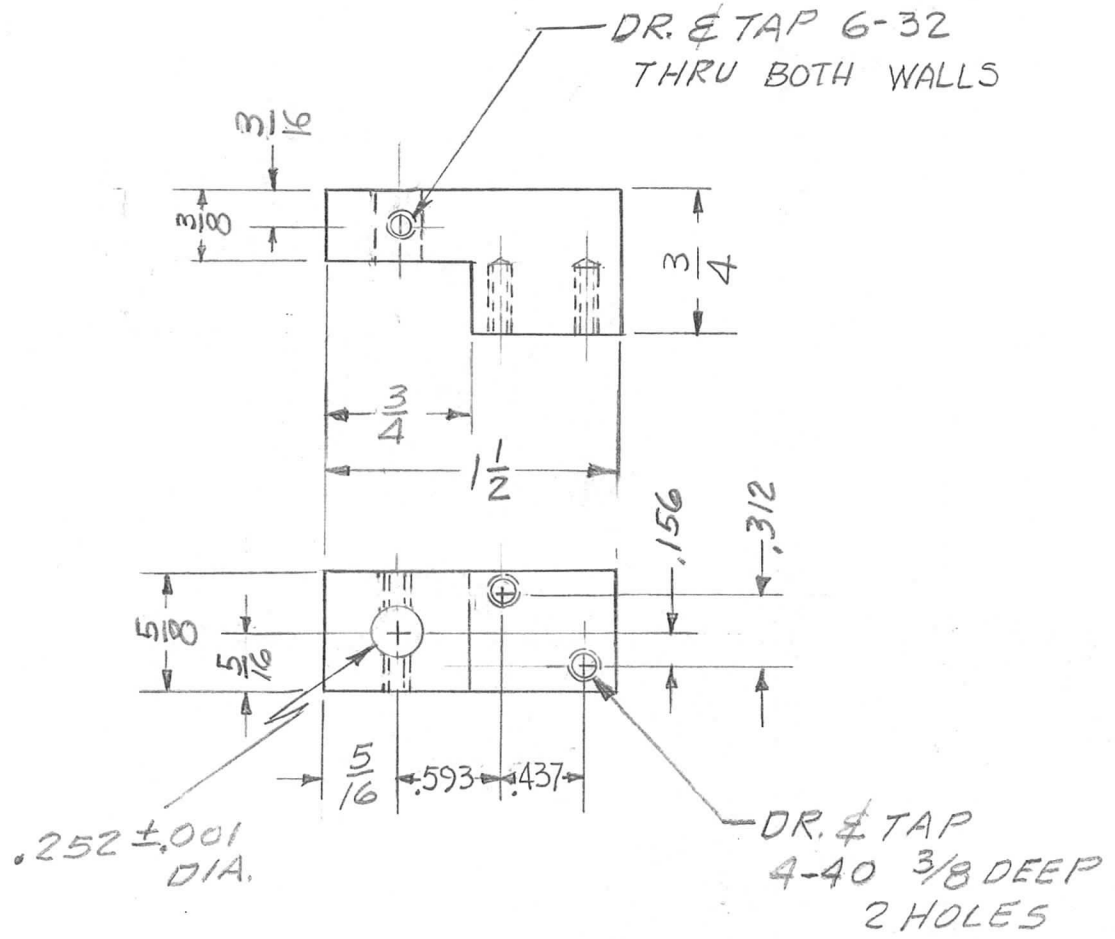
REQ. PER UNIT	USED ON			PM 1122 B
	MODEL	ASS'Y. NO.	DATE	
4	VLRB-1			

METAL STAMP TMC P/No. 1/16 HIGH
GOTHIC W/LATEST REV. LETTER



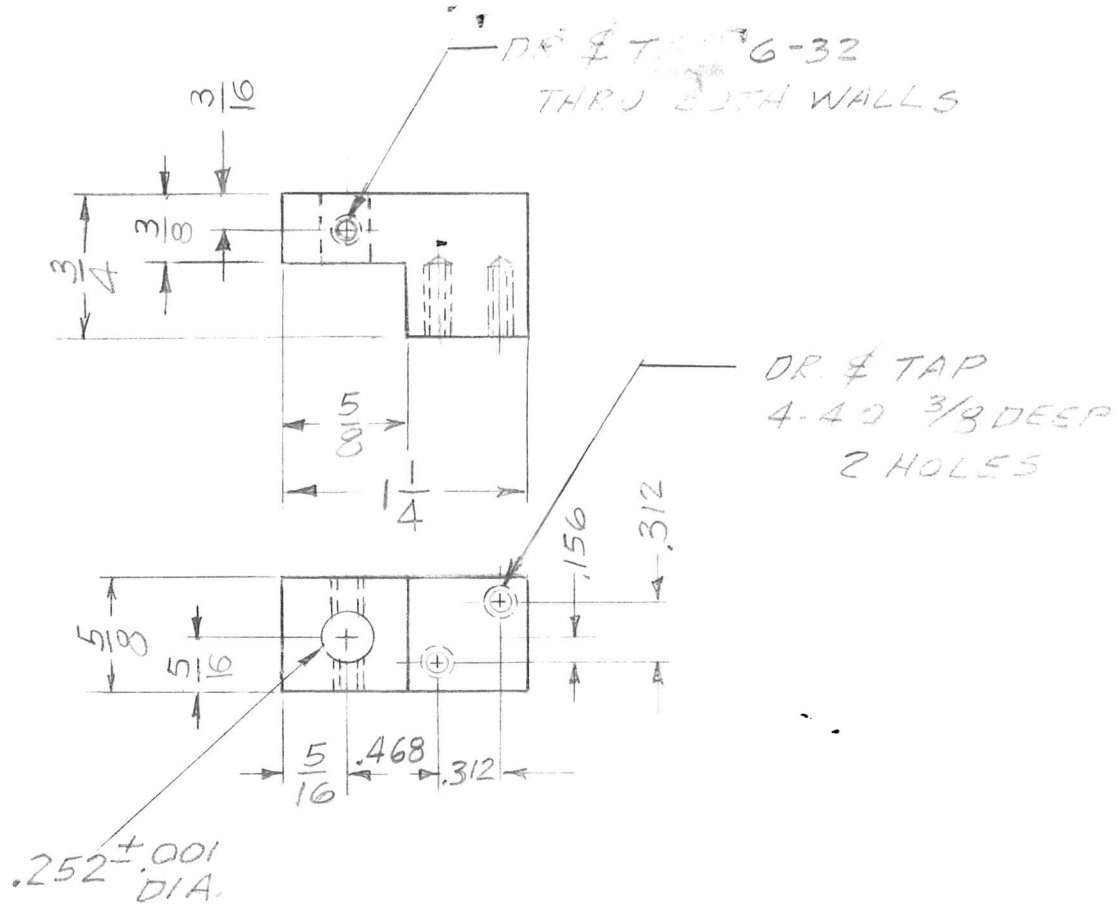
B	TMC P/N 1/16 HIGH WAS 1/8	2-19-69	19224	GE	10	OP	2	1	BB132-1	BEARING, SLEEVE			
A	ITEM 1 ADDED	2-2-66	15679	MW	SA	OP	REQ.	ITEM	PART NO.	DESCRIPTION	SYMBOL		
Ø	ORIGINAL RELEASE FOR PRODUCTION	4.9.65	Ø	SA			STOCK SIZE			THE TECHNICAL MATERIEL CORP. MAMARONECK, NEW YORK			
X	EXPER. RELEASE						MATERIAL			BLOCK, BEARING			
							2024-T4			Drawn	Checked		
UNLESS OTHERWISE SPECIFIED DIMENSIONS ARE IN INCHES AND INCLUDE CHEMICALLY APPLIED OR PLATED FINISHES							SCALE		1:1		FINAL APPROVAL		
DECIMALS		FRACTIONS		CODE		TYPE & TEMPER		HEAT TREAT. SPEC.		ELEC. DES. APP.		MECH. DES. APP.	
.X ± .05		± 1/64		A		5404 YEL. IRIDITE				DIA.C.		MW	
.XX ± .01		ANGLES										PM 1122 B	
.XXX ± .005		± 0° 30'											

REQ. PER UNIT	USED ON			PM1123
	MODEL	ASS'Y. NO.	DATE	
2	VLRB-1			



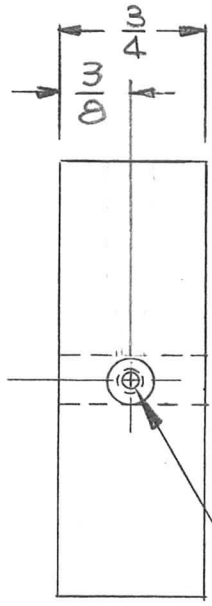
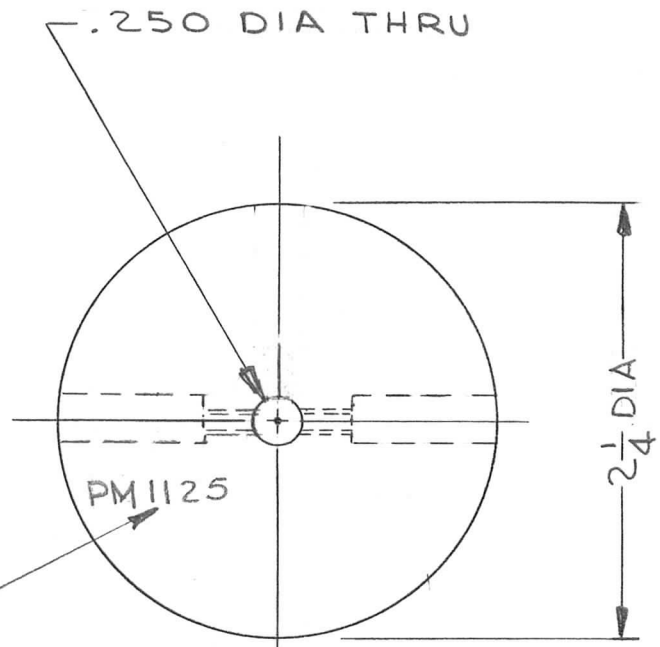
REQ.	ITEM	PART NO.	O-POSE		DESCRIPTION	SYMBOL
					THE TECHNICAL MATERIEL CORP.	
					MAMARONECK. NEW YORK	
Ø	ORIGINAL RELEASE FOR PRODUCTION	49165	Ø	22	STOCK SIZE	
X	EXPER. RELEASE				ALUMINUM	
					MATERIAL	
					2024-T4	
					TYPE & TEMPER	
					HEAT TREAT. SPEC.	
					S404 YEL. IRIDITE	
					FINISH & SPEC. NO.	
					DRAWN	
					CHECKED	
					FINAL APPROVAL	
					ELEC. DES. APP.	
					MECH. DES. APP.	
						PM1123

REQ. PER UNIT	USED ON			PM1124	Ø
	MODEL	ASS'Y. NO.	DATE		
2	VLRB-1				



							REQ. ITEM	PART NO.	0. POSE	DESCRIPTION	SYMBOL
Ø	ORIGINAL RELEASE FOR PRODUCTION	4.9.65	Ø	91.					THE TECHNICAL MATERIEL CORP. MAMARONECK, NEW YORK		
X	EXPER. RELEASE							ALUMINUM	SUPPORT BLOCK UPPER ROD		
SYM	DESCRIPTION	DATE	CH. NO.	DRAFTS	CHECKER	ENG. APP.	MATERIAL				
UNLESS OTHERWISE SPECIFIED DIMENSIONS ARE IN INCHES AND INCLUDE CHEMICALLY APPLIED OR PLATED FINISHES						SCALE	2024-T4		D.A.C.	@	A.K. King 4/9/65
						1:1	TYPE & TEMPER	HEAT TREAT. SPEC.	DRAWN	CHECKED	FINAL APPROVAL
DECIMALS	TOLERANCES	FRACTIONS	CODE				S404 YEL. IRIDITE				PM1124
.X ± .05		± 1/64	A				FINISH & SPEC. NO.	ELEC. DES. APP.	MECH. DES. APP.	Ø	
.XX ± .01		ANGLES									
.XXX ± .005		± 0° 30'									

REQ. PER UNIT	USED ON			PM1125	⊗
	MODEL	ASS'Y. NO.	DATE		
1	VLRB-1		8-28-64		



METAL STAMP TMC P/No
1/8 HIGH GOTHIC W/LATEST
REVISION LETTER

COUNTERBORE 1/4 DIA X 3/4 DP,
NO 36 (.1065) DRILL & TAP
#6-32NC-2B TH'D THRU
(2-PLACES) 180° APART

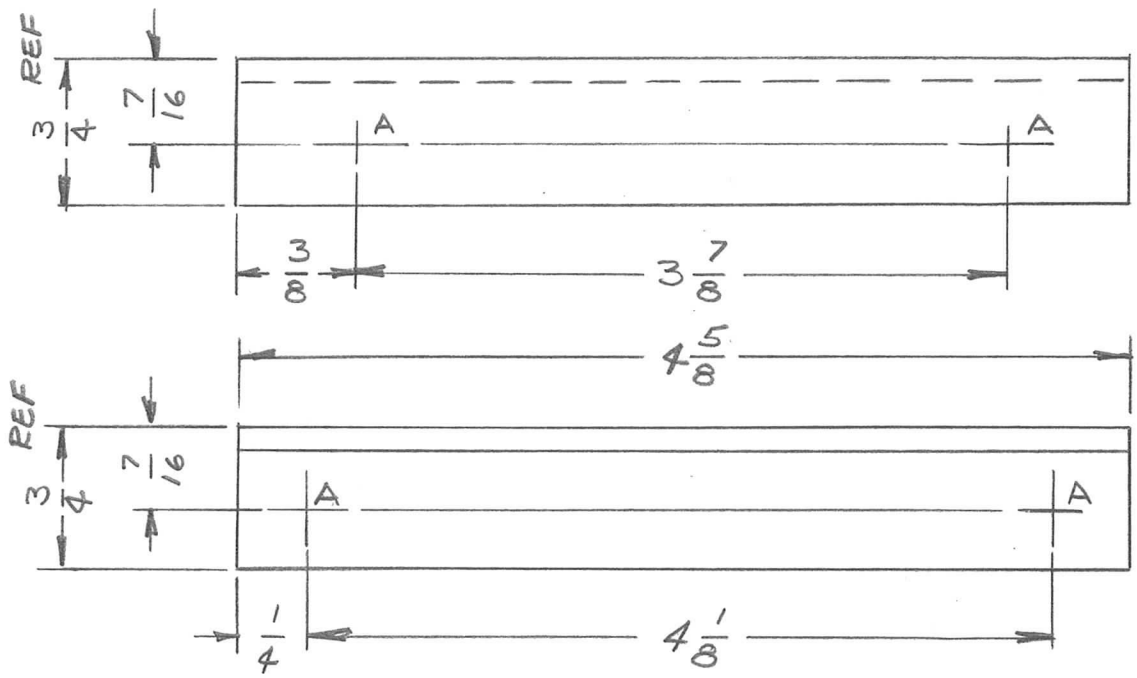
SYM	DESCRIPTION	DATE	CH. NO.	DRAFTS	CHECKER	ENG. APP.	REQ. ITEM	PART NO.	DESCRIPTION	SYMBOL	
⊗	ORIGINAL RELEASE FOR PRODUCTION	4/9/65	⊗	JL					THE TECHNICAL MATERIEL CORP. MAMARONECK, NEW YORK	FLYWHEEL	
XI	C/BORE 90° RELOCATED TO 180°	12-2-64		G.D.L			STOCK SIZE				
X	EXPERIMENTAL REL.	8/29/64		JL			MATERIAL	BRASS			
UNLESS OTHERWISE SPECIFIED DIMENSIONS ARE IN INCHES AND INCLUDE CHEMICALLY APPLIED OR PLATED FINISHES							SCALE	1:1	1/2 HARD	J. LESHINSKI @	A. H. Hany 4/9/65
DECIMALS .X ± .05 .XX ± .01 .XXX ± .005	TOLERANCES	FRACTIONS ± 1/64 ANGLES ± 0° 30'	CODE A				TYPE & TEMPER	HEAT TREAT. SPEC.	DRAWN	CHECKED	FINAL APPROVAL
							NICKEL PLATE S-135				PM1125 ⊗
							FINISH & SPEC. NO.	ELEC. DES. APP.	MECH. DES. APP.		

REQ. PER UNIT	USED ON		
	MODEL	ASS'Y. NO.	DATE
1	RTIA-1	A4059	1-25-65
1	RTIA-1	A4060	1-26-65

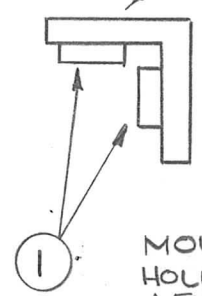
PM1126

Ø

HOLE	DESCRIPTION	REQ
A	.221-.224 DIA	4



METAL STAMP TMC PTNO
1/8 GOTHIC W/LATEST
REVISION LETTER ON LIP



MOUNT IN ALL
HOLES AS SHOWN
AFTER FINISHING.

SYM	DESCRIPTION	DATE	CH. NO.	DRAFTS	CHECKER	ENG. APP.	REQ. ITEM	PART NO.	DESCRIPTION	SYMBOL
Ø	ORIGINAL RELEASE FOR PRODUCTION	2.8.65	Ø	22.			4	1 NT129-832-6	NUT, PLAIN, SPLINE	A
X1	REDRAWN-NO CHANGES	1-25-65	X1	Ø	JM				EATON	
									EXTRUDED ANGLE 3/4 x 3/4 x 1/8 THK STOCK SIZE	
									ALUMINUM	
									5052-H32	
									5404 YELLOW IRIDITE	
									FINISH & SPEC. NO.	
									THE TECHNICAL MATERIEL CORP. MAMARONECK, NEW YORK	
									BRACKET, MTG, SIDE	
									UNLESS OTHERWISE SPECIFIED DIMENSIONS ARE IN INCHES AND INCLUDE CHEMICALLY APPLIED OR PLATED FINISHES	
									SCALE	
									5052-H32	
									TYPE & TEMPER	
									HEAT TREAT. SPEC.	
									DRAWN	
									CHECKED	
									FINAL APPROVAL	
									W. JORDAN	
									2/3/65	
									PM1126	
									ELEC. DES. APP.	
									MECH. DES. APP.	

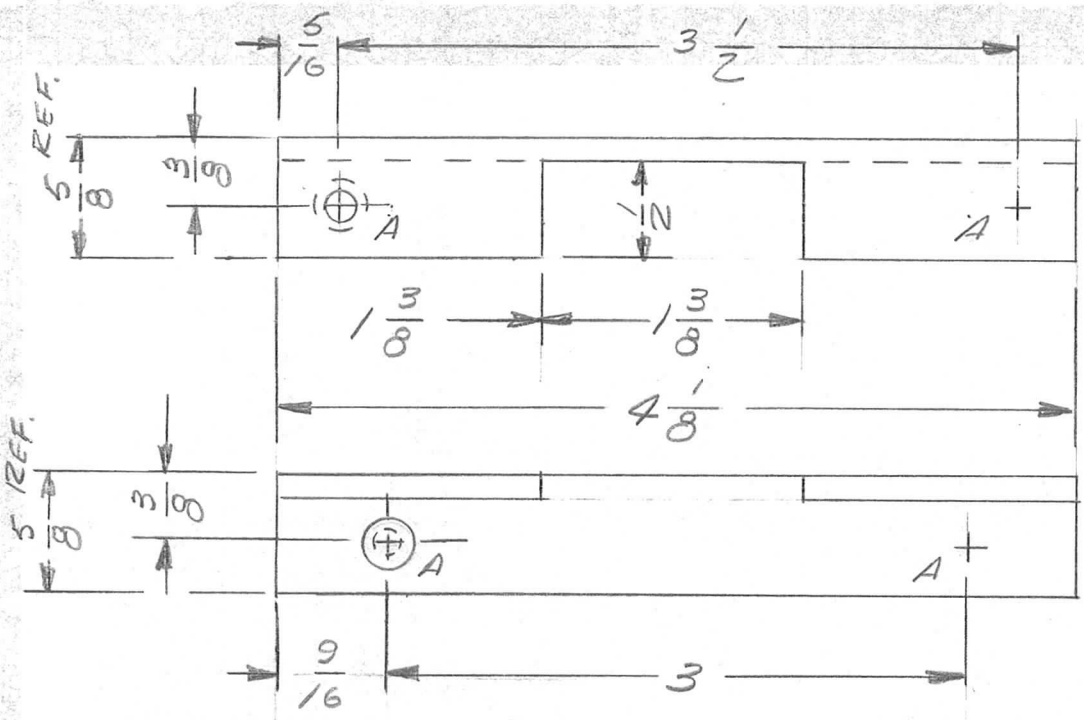
DECIMALS
.X ± .05
.XX ± .01
.XXX ± .005

FRACTIONS
± 1/64
ANGLES
± 0° 30'

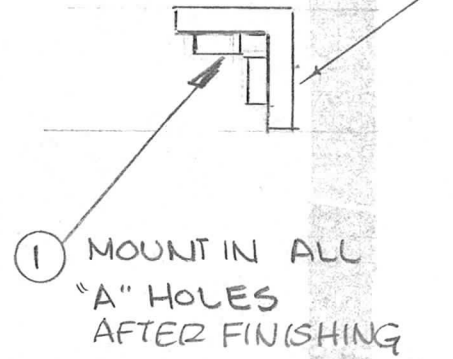
TOLERANCES

CODE
A

REQ. PER UNIT	USED ON			PM1127	Ø
	MODEL	ASS'Y. NO.	DATE		
2	RTIA-1	A4064	1-25-65		



METAL STAMP TMC
 PT/NO DM1127-
 1/8 GOTHIC W/LATEST
 REV. LETTER ON LIP.

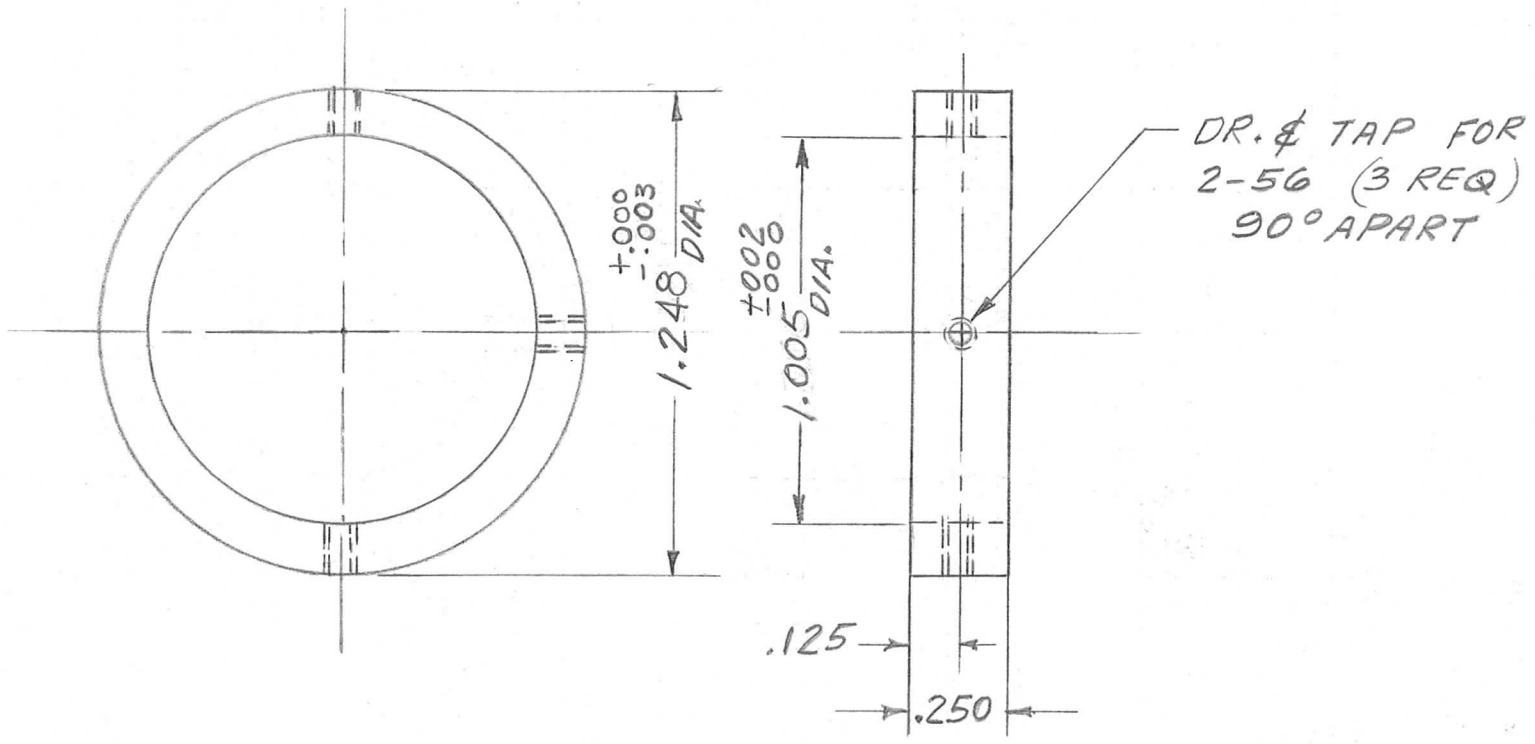


HOLE LEGEND

HOLE	DESCRIPTION	REQ'D
"A"	.221-.224 DIA.	4

4	1	NT129-832-6	NUT, PLAIN, SPLINE			A
REQ. ITEM	PART NO.		DESCRIPTION			SYMBOL
ORIGINAL RELEASE FOR PRODUCTION		2-8-65	Ø	JL.	THE TECHNICAL MATERIEL CORP. MAMARONECK, NEW YORK	
REDRAWN - NO CHANGES		125-65	X1	J.M.	BRACKET, SUPPORT- REAR (P.C. CARD BIN)	
SYM	DESCRIPTION	DATE	CH. NO.	DRAFTS	CHECKER	ENG. APP.
UNLESS OTHERWISE SPECIFIED DIMENSIONS ARE IN INCHES AND INCLUDE CHEMICALLY APPLIED OR PLATED FINISHES		SCALE: <i>M</i>				
DECIMALS .X ± .05 .XX ± .01 .XXX ± .005		FRACTIONS ± 1/64 ANGLES ± 0° 30'		CODE A		
TOLERANCES		5052-H32		3404 YELLOW IRIDITE		FINISH & SPEC. NO.
		TYPE & TEMPER		HEAT TREAT. SPEC.		DRAWN
		W. JORDAN		2/8/65		CHECKED
		W. JORDAN		2/8/65		FINAL APPROVAL
		ELEC. DES. APP.		MECH. DES. APP.		PM1127

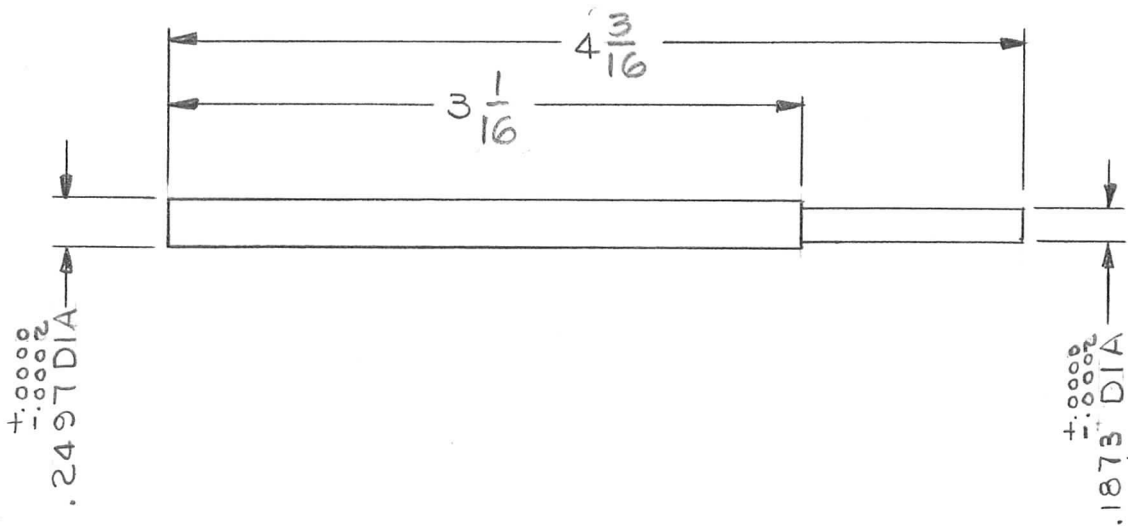
REQ. PER UNIT	USED ON			PM1131	A
	MODEL	ASS'Y. NO.	DATE		
1	VLRB-1		10-20-64		



NOTE :
REMOVE ALL BURRS AND SHARP EDGES

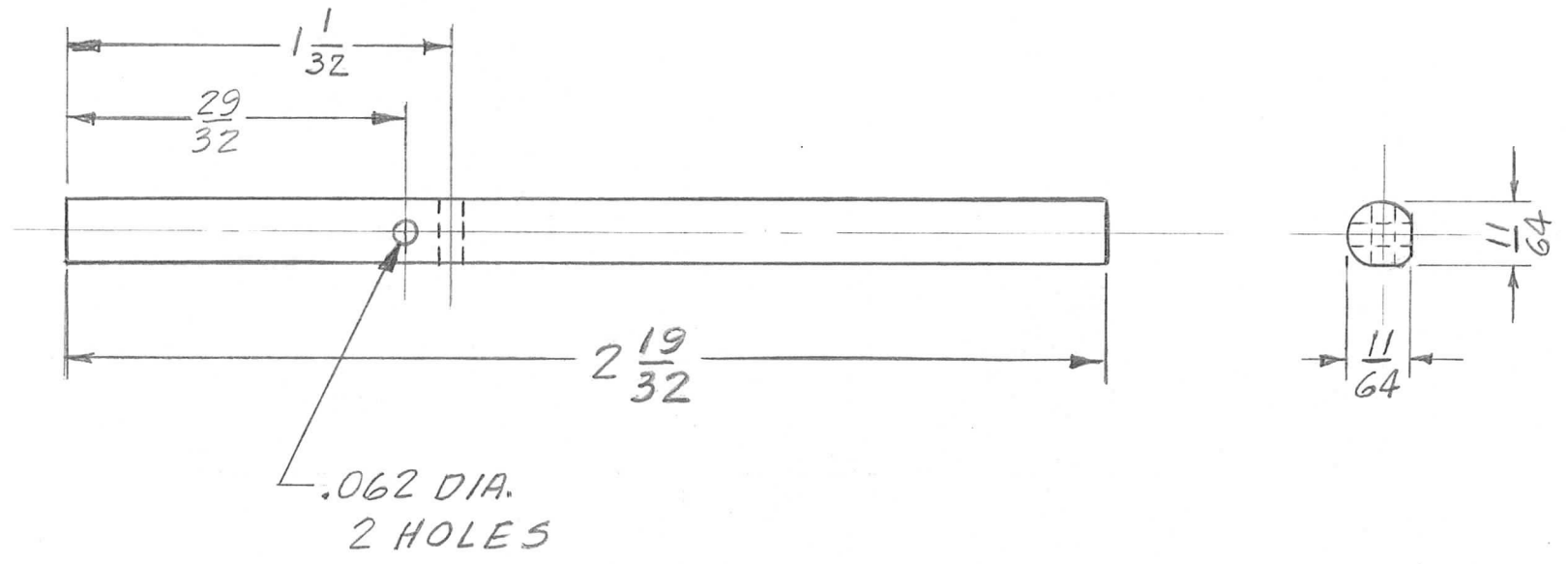
A	1.005 DIA. WAS 1.000 DIA	1/2/69	19170	K.H.	J.D.	FB	REQ. ITEM	PART NO.	0. POSE	DESCRIPTION	SYMBOL
Ø	ORIGINAL RELEASE FOR PRODUCTION	4.9.65	Ø	J.S.			1/4 THK		THE TECHNICAL MATERIEL CORP. MAMARONECK, NEW YORK		
XI	DIM. 1.248 WAS 1.250	12-2-64		GDL			STOCK SIZE		BUSHING, DIAL MTG		
X	1.000 DIA. WAS .750	10/28/64					ALUMINUM		(RIGHT)		
SYM	DESCRIPTION	DATE	CH. NO.	DRAFTS	CHECKER	ENG. APP.	MATERIAL				
UNLESS OTHERWISE SPECIFIED DIMENSIONS ARE IN INCHES AND INCLUDE CHEMICALLY APPLIED OR PLATED FINISHES		SCALE					5052-H32		D.A.C.	@	<i>[Signature]</i>
		2:1					TYPE & TEMPER	HEAT TREAT. SPEC.	DRAWN	CHECKED	FINAL APPROVAL
DECIMALS X ± .05 .XX ± .01 .XXX ± .005	TOLERANCES	FRACTIONS ± 1/64 ANGLES ± 0° 30'	CODE				5404 YELLOW IRIDITE			<i>[Signature]</i>	PM1131
		A					FINISH & SPEC. NO.		ELEC. DES. APP.	MECH. DES. APP.	A

REQ. PER UNIT	USED ON			PM1132	Ø
	MODEL	ASS'Y. NO.	DATE		
1	VLRB-1		8-28-64		



							REQ. ITEM	PART NO.	0. POSE	DESCRIPTION	SYMBOL
									THE TECHNICAL MATERIEL CORP. MAMARONECK, NEW YORK		
Ø	ORIGINAL RELEASE FOR PRODUCTION	4.9.65	Ø	JL				STOCK SIZE	SHAFT, STRAIGHT-TUNING		
X	EXPERIMENTAL REL.	8/28/64		JL				MATERIAL			
SYM	DESCRIPTION	DATE	CH. NO.	DRAFTS	CHECKER	ENG. APP.					
UNLESS OTHERWISE SPECIFIED DIMENSIONS ARE IN INCHES AND INCLUDE CHEMICALLY APPLIED OR PLATED FINISHES						SCALE	#303	J. LESHINSKI	@	Ø	
						1:1					
DECIMALS	TOLERANCES	FRACTIONS	CODE				TYPE & TEMPER	HEAT TREAT. SPEC.	DRAWN	CHECKED	FINAL APPROVAL
.X ± .05 .XX ± .01 .XXX ± .005		± 1/64 ANGLES ± 0° 30'	A				PASSIVATE				PM 1132
							FINISH & SPEC. NO.	ELEC. DES. APP.	MECH. DES. APP.		Ø

REQ. PER UNIT	USED ON			PM1133	Ø
	MODEL	ASS'Y. NO.	DATE		
1	VLRB-1				

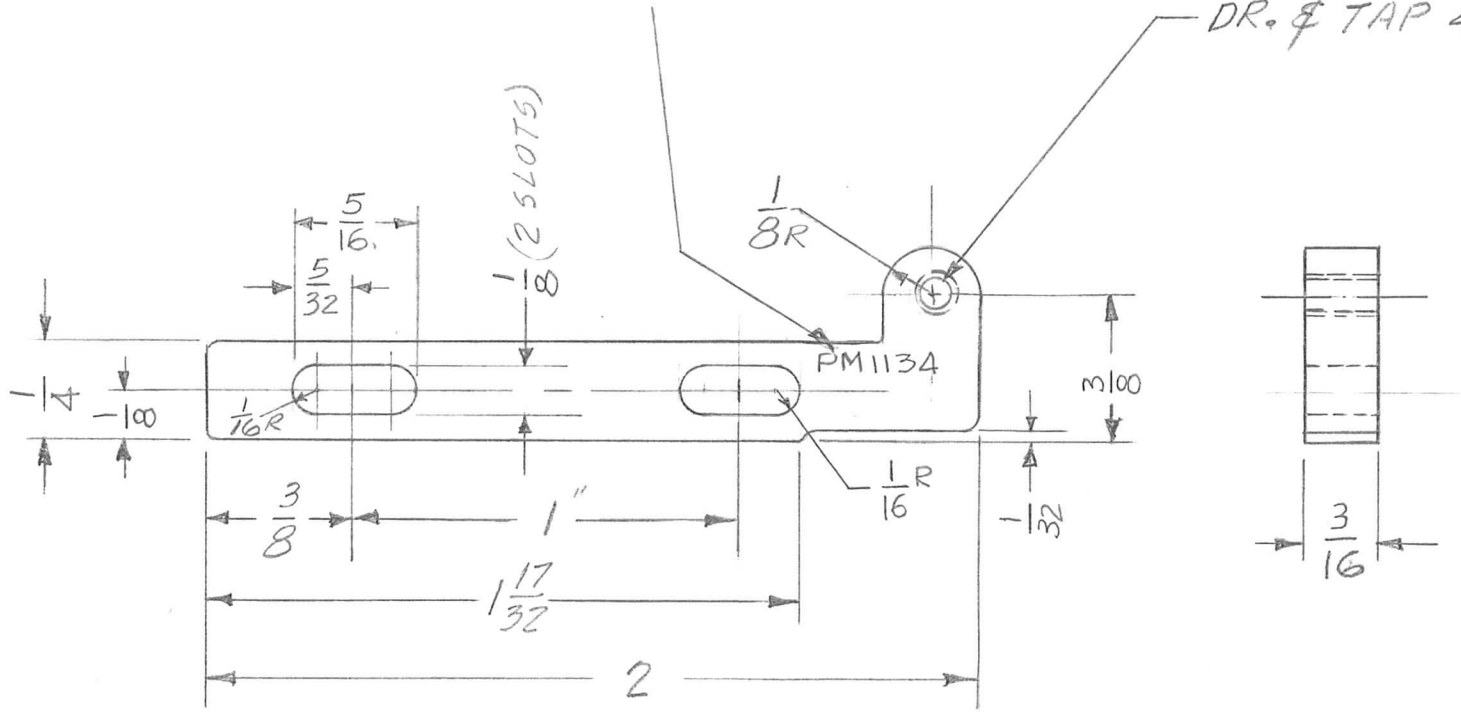


							REQ. ITEM	PART NO.	KRUY	DESCRIPTION	SYMBOL	
							3/16 DIA. ROD		THE TECHNICAL MATERIEL CORP. MAMARONECK, NEW YORK			
Ø	ORIGINAL RELEASE FOR PRODUCTION	4.9.65	Ø	2f.			STAINLESS STEEL		SHAFT, STRAIGHT-LOCK			
X	EXPER. RELEASE						MATERIAL					
SYM	DESCRIPTION	DATE	CH. NO.	DRAFTS	CHECKER	ENG. APP.	#303		D.A.C.	@	<i>[Signature]</i>	
UNLESS OTHERWISE SPECIFIED DIMENSIONS ARE IN INCHES AND INCLUDE CHEMICALLY APPLIED OR PLATED FINISHES						SCALE DO NOT SCALE		TYPE & TEMPER	HEAT TREAT. SPEC.	DRAWN	CHECKED	FINAL APPROVAL
DECIMALS .X ± .05 .XX ± .01 .XXX ± .005		FRACTIONS ± 1/64 ANGLES ± 0° 30'		CODE A		5104 PASSIVATE		FINISH & SPEC. NO.		ELEC. DES. APP.	MECH. DES. APP.	PM1133 Ø

REQ. PER UNIT 1	USED ON			PM1134	A
	MODEL VLRB-1	ASS'Y. NO.	DATE		

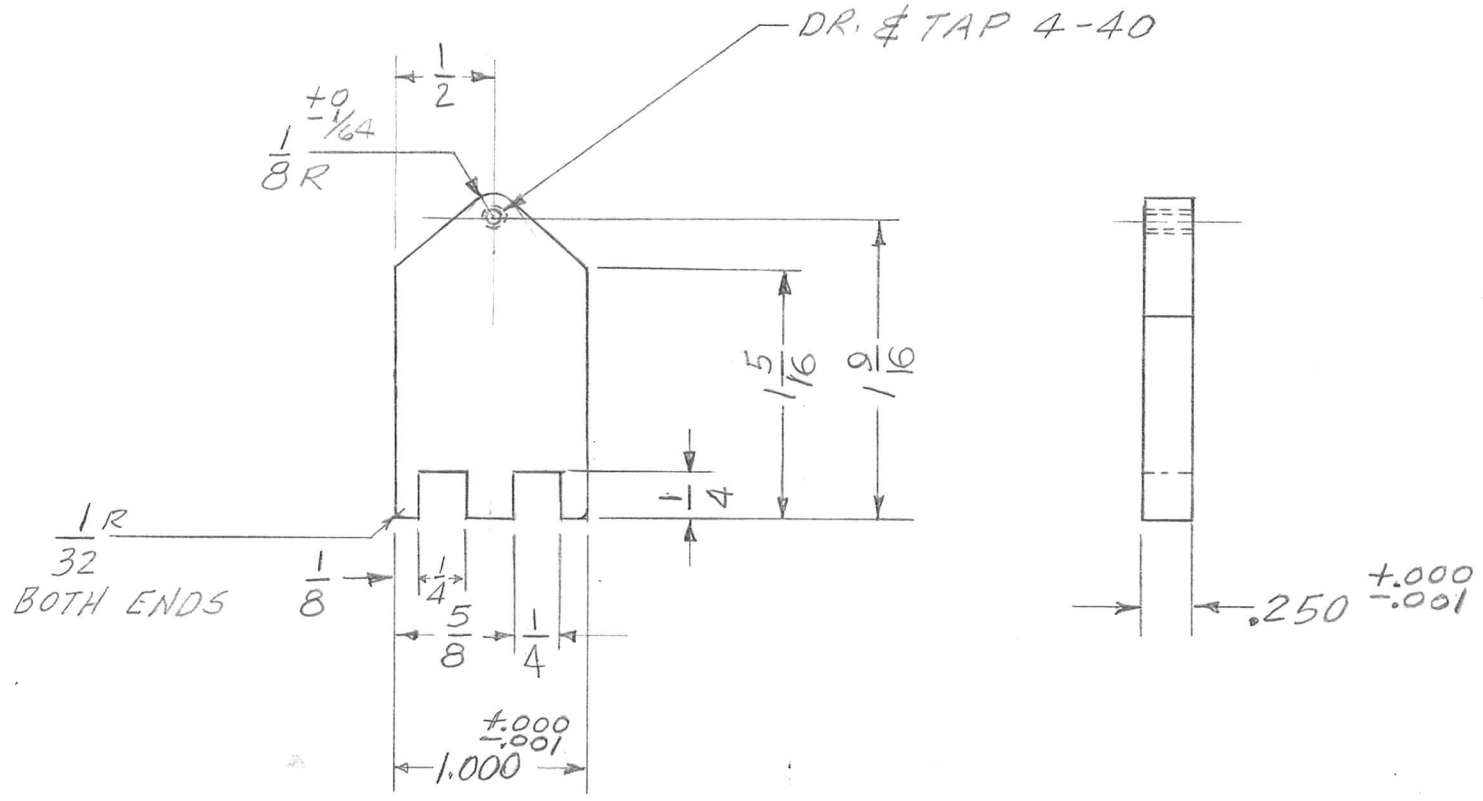
METAL STAMP TMC P/NO 1/16 HIGH
GOTHIC W/LATEST REV. LETTER

DR. & TAP 4-40



SYM	DESCRIPTION	DATE	CH. NO.	DRAFTS	CHECKER	ENG. APP.	REQ. ITEM	PART NO.	O. POSE	DESCRIPTION	SYMBOL								
A	TMC. P/N 1/16 HIGH WAS 1/2	2-19-69	19224	GE	<i>[Signature]</i>	<i>[Signature]</i>				THE TECHNICAL MATERIEL CORP. MAMARONECK. NEW YORK PULLEY, TENSION BAR (DIAL DRIVE)	A								
Ø	ORIGINAL RELEASE FOR PRODUCTION	4-9-65	Ø	Ø	Ø														
X	EXPER. RELEASE																		
UNLESS OTHERWISE SPECIFIED DIMENSIONS ARE IN INCHES AND INCLUDE CHEMICALLY APPLIED OR PLATED FINISHES							SCALE 2:1		2024-T4 TYPE & TEMPER			HEAT TREAT. SPEC.		DRAWN D.A.C.		CHECKED @		FINAL APPROVAL <i>[Signature]</i>	
DECIMALS .X ± .05 .XX ± .01 .XXX ± .005		FRACTIONS ± 1/64 ANGLES ± 0° 30'		TOLERANCES A		CODE A		5404 YEL. IRIDITE FINISH & SPEC. NO.		ELEC. DES. APP.		MECH. DES. APP.		PM1134		A			

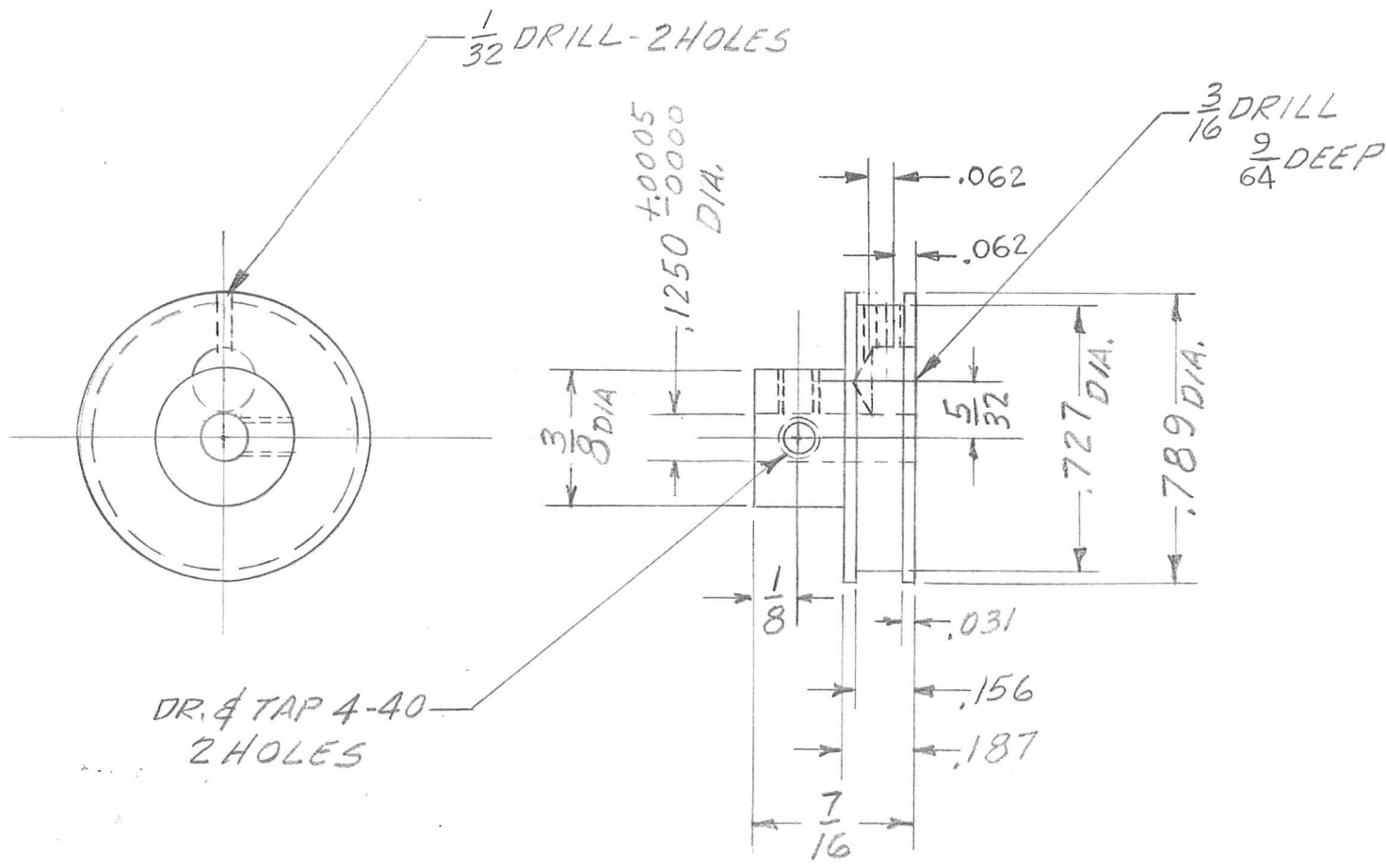
REQ. PER UNIT	USED ON			PM1135	Ø
	MODEL	ASS'Y. NO.	DATE		
1	VLRB1				



REMOVE ALL BURRS AND SHARP EDGES

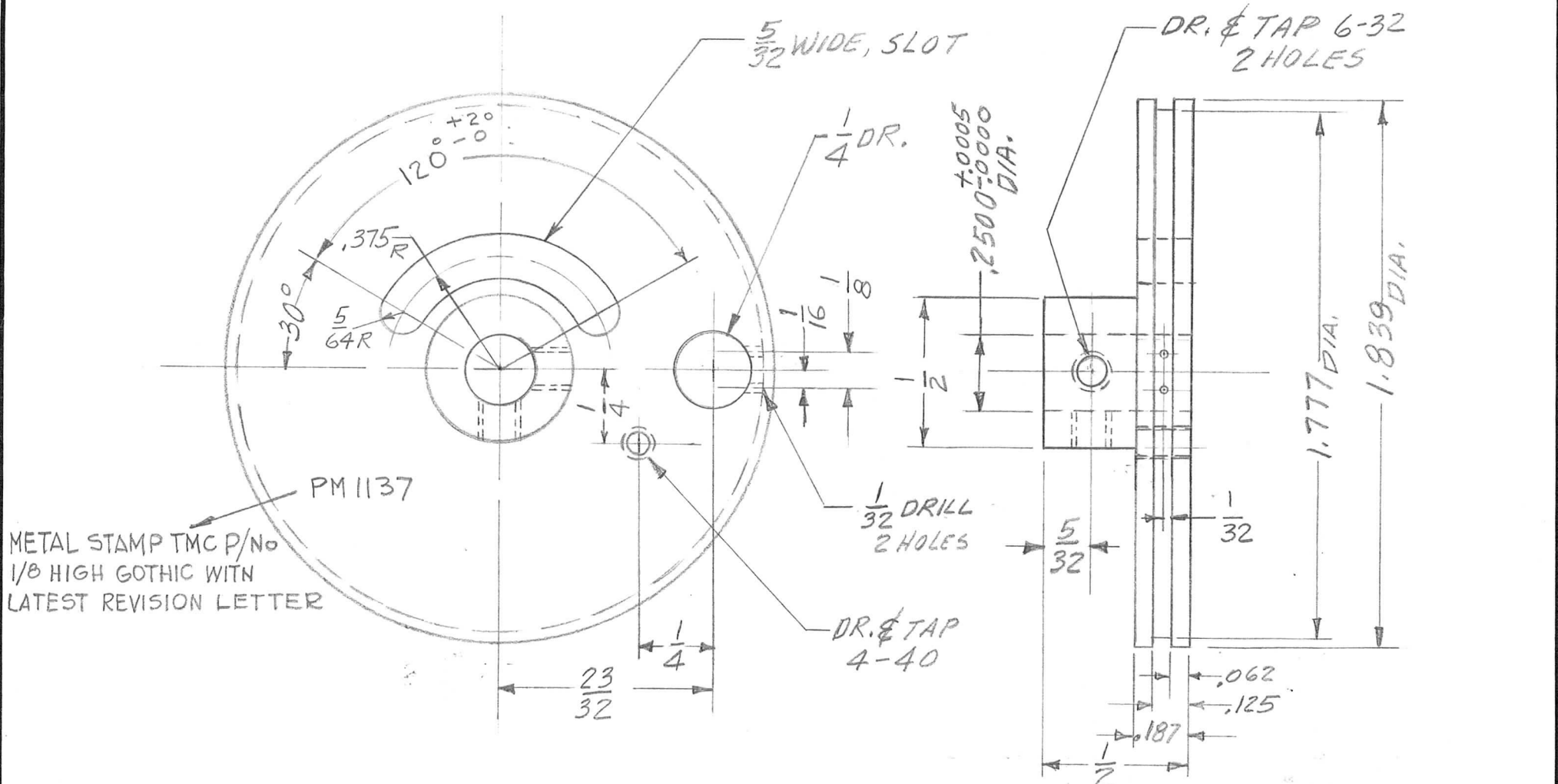
Ø	ORIGINAL RELEASE FOR PRODUCTION	4.9.65	Ø	DR			REQ. ITEM	PART NO.	O. POSE	DESCRIPTION	SYMBOL	
X2	MATERIAL WAS ALUMINUM	12-29-64		G.D.L.						THE TECHNICAL MATERIEL CORP. MAMARONECK, NEW YORK		
X1	METAL STAMP NOTE "DELETED"	12-22-64		G.D.L.				STOCK SIZE				
X	EXPER. RELEASE	12-						STAINLESS STEEL			CAM FOLLOWER SLIDE	
SYM	DESCRIPTION	DATE	CH. NO.	DRAFTS	CHECKER	ENG. APP.		MATERIAL				
UNLESS OTHERWISE SPECIFIED DIMENSIONS ARE IN INCHES AND INCLUDE CHEMICALLY APPLIED OR PLATED FINISHES		SCALE					# 303		D.A.C.	@	1/11/65 4/9/65	
DECIMALS X ± .05 .XX ± .01 .XXX ± .005		FRACTIONS ± 1/64 ANGLES ± 0° 30'		CODE	A			TYPE & TEMPER	HEAT TREAT. SPEC.	DRAWN	CHECKED	FINAL APPROVAL
TOLERANCES							5104 PASSIVATE					PM1135
							FINISH & SPEC. NO.		ELEC. DES. APP.	MECH. DES. APP.		Ø

REQ. PER UNIT	USED ON			PM1136	Ø
	MODEL	ASS'Y. NO.	DATE		
1	VLRB-1				



SYM	DESCRIPTION	DATE	CH. NO.	DRAFTS	CHECKER	ENG. APP.	REQ. ITEM	PART NO.	DESCRIPTION	SYMBOL		
Ø	ORIGINAL RELEASE FOR PRODUCTION	4-9-65	Ø	2L					THE TECHNICAL MATERIEL CORP. MAMARONECK, NEW YORK			
XI	2 HOLES 1/32 DIA. RELOCATED	12-2-64		G.D.L			STOCK SIZE					
X	EXPER. RELEASE						ALUMINUM	PULLEY				
							MATERIAL	DRUM DIAL TOP				
UNLESS OTHERWISE SPECIFIED DIMENSIONS ARE IN INCHES AND INCLUDE CHEMICALLY APPLIED OR PLATED FINISHES							SCALE	2:1	2024-T3	D.A.C.	@	17/11/1965 4/9/65
DECIMALS .X ± .05 .XX ± .01 .XXX ± .005	TOLERANCES	FRACTIONS ± 1/64 ANGLES ± 0° 30'	CODE	A			TYPE & TEMPER	HEAT TREAT. SPEC.	DRAWN	CHECKED	FINAL APPROVAL	
							S404 YEL IRIDITE			223	PM1136	Ø
							FINISH & SPEC. NO.	ELEC. DES. APP.	MECH. DES. APP.			

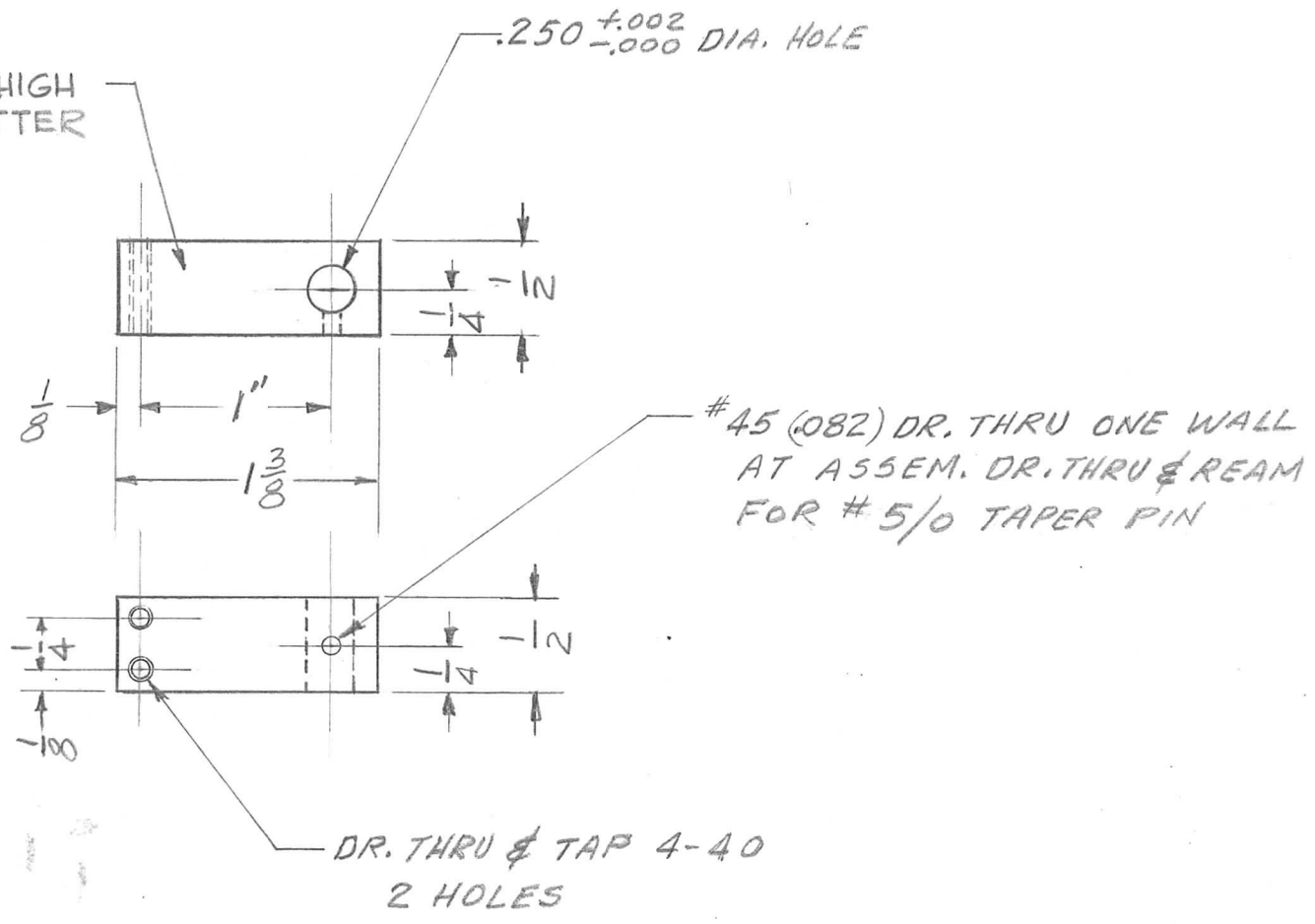
REQ. PER UNIT	USED ON			PM1137	Ø
	MODEL	ASS'Y. NO.	DATE		
1	VLRB-1				



REQ.	ITEM	PART NO.	DESCRIPTION				SYMBOL
Ø	ORIGINAL RELEASE FOR PRODUCTION	4.9.65	Ø	RF.	THE TECHNICAL MATERIEL CORP. MAMARONECK, NEW YORK		
X	EXPER. RELEASE				ALUMINUM		
SYM	DESCRIPTION	DATE	CH. NO.	DRAFTS	CHECKER	ENG. APP.	
UNLESS OTHERWISE SPECIFIED DIMENSIONS ARE IN INCHES AND INCLUDE CHEMICALLY APPLIED OR PLATED FINISHES		SCALE		2:1			
DECIMALS X ± .05 .XX ± .01 .XXX ± .005		FRACTIONS ± 1/64 ANGLES ± 0° 30'		CODE		A	
TOLERANCES		2024-T3		D.A.C.		©	
		5404 YEL. IRIDIITE		HEAT TREAT. SPEC.		DRAWN	
		FINISH & SPEC. NO.		ELEC. DES. APP.		MECH. DES. APP.	
						CHECKED	
						FINAL APPROVAL	
						PM1137	
						Ø	

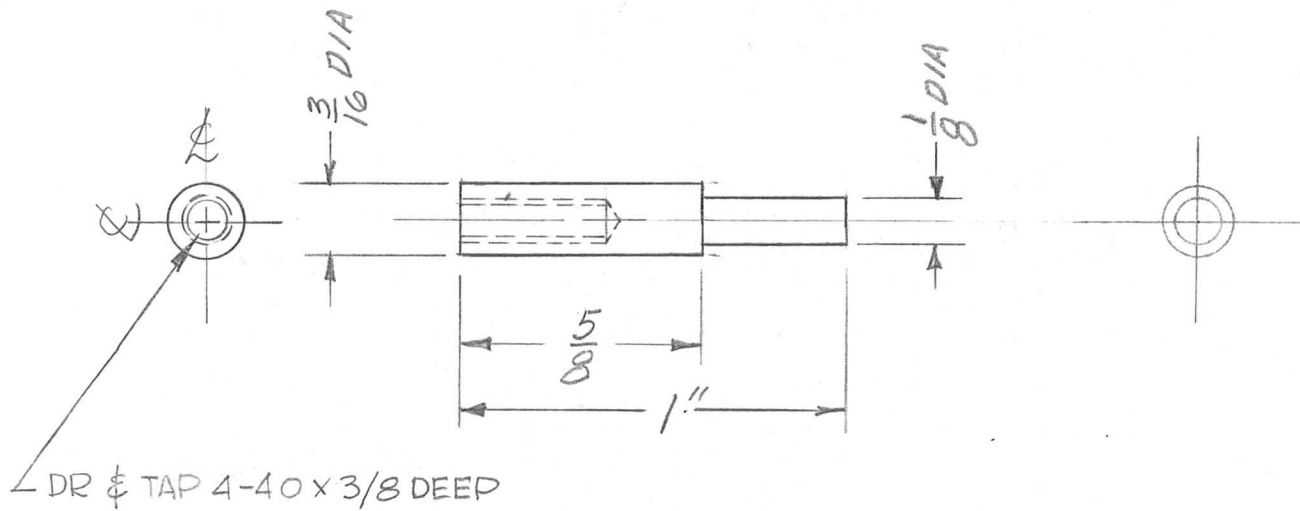
REQ. PER UNIT	USED ON			PM 1138	Ø
	MODEL	ASS'Y. NO.	DATE		
1	VLRB-1				

METAL STAMP TMC P/No 1/8 HIGH
GOTHIC W/LATEST REV. LETTER



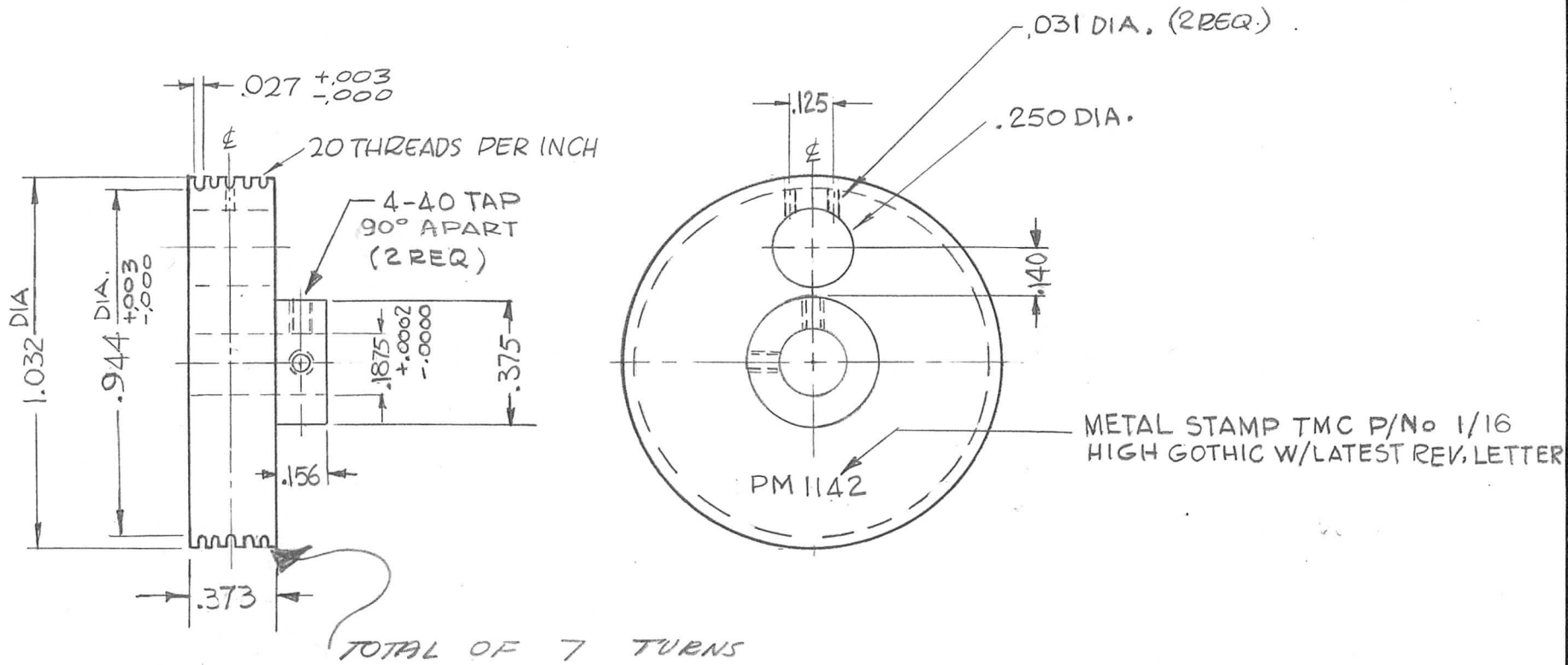
REQ.	ITEM	PART NO.	O. POSE		DESCRIPTION	SYMBOL
Ø		1/2 x 1/2	THE TECHNICAL MATERIEL CORP.		MAMARONECK, NEW YORK	
X		ALUMINUM	ADJ. STOP BAR			
SYM	DESCRIPTION	DATE	CH. NO.	DRAFTS	CHECKER	ENG. APP.
UNLESS OTHERWISE SPECIFIED DIMENSIONS ARE IN INCHES AND INCLUDE CHEMICALLY APPLIED OR PLATED FINISHES		SCALE	1:1			
DECIMALS .X ± .05 .XX ± .01 .XXX ± .005	FRACTIONS ± 1/64 ANGLES ± 0° 30'	TOLERANCES	CODE	2024 T3		
			A	S404 YEL. IRIDITE		
				FINISH & SPEC. NO.		
				DRAWN		CHECKED
				ELEC. DES. APP.		MECH. DES. APP.
				A/M May 4/9/65		FINAL APPROVAL
				PM 1138		Ø

REQ. PER UNIT	USED ON			PM1139	
	MODEL	ASS'Y. NO.	DATE		
1	VLRB-1				



							REQ.	ITEM	PART NO.	0. POSE	DESCRIPTION	SYMBOL
										THE TECHNICAL MATERIEL CORP. MAMARONECK, NEW YORK		
	ORIGINAL RELEASE FOR PRODUCTION	4.9.65		DL1					STAINLESS STEEL	STOP PIN		
X	EXPER. RELEASE								MATERIAL	MAIN PULLEY DIAL DRIVE		
SYM	DESCRIPTION	DATE	CH. NO.	DRAFTS	CHECKER	ENG. APP.			303		D.A.C.	
UNLESS OTHERWISE SPECIFIED DIMENSIONS ARE IN INCHES AND INCLUDE CHEMICALLY APPLIED OR PLATED FINISHES						SCALE						
						2:1						
DECIMALS	FRACTIONS	CODE										
.X ± .05	± 1/64	A										
.XX ± .01	ANGLES											
.XXX ± .005	± 0° 30'											
							TYPE & TEMPER	HEAT TREAT. SPEC.	DRAWN	CHECKED	FINAL APPROVAL	
							S104 PASSIVATE				PM1139	
							FINISH & SPEC. NO.	ELEC. DES. APP.	MECH. DES. APP.			

REQ. PER UNIT	USED ON			PM 1142	A
	MODEL	ASS'Y. NO.	DATE		
1	VLRB-1		8/28/64		



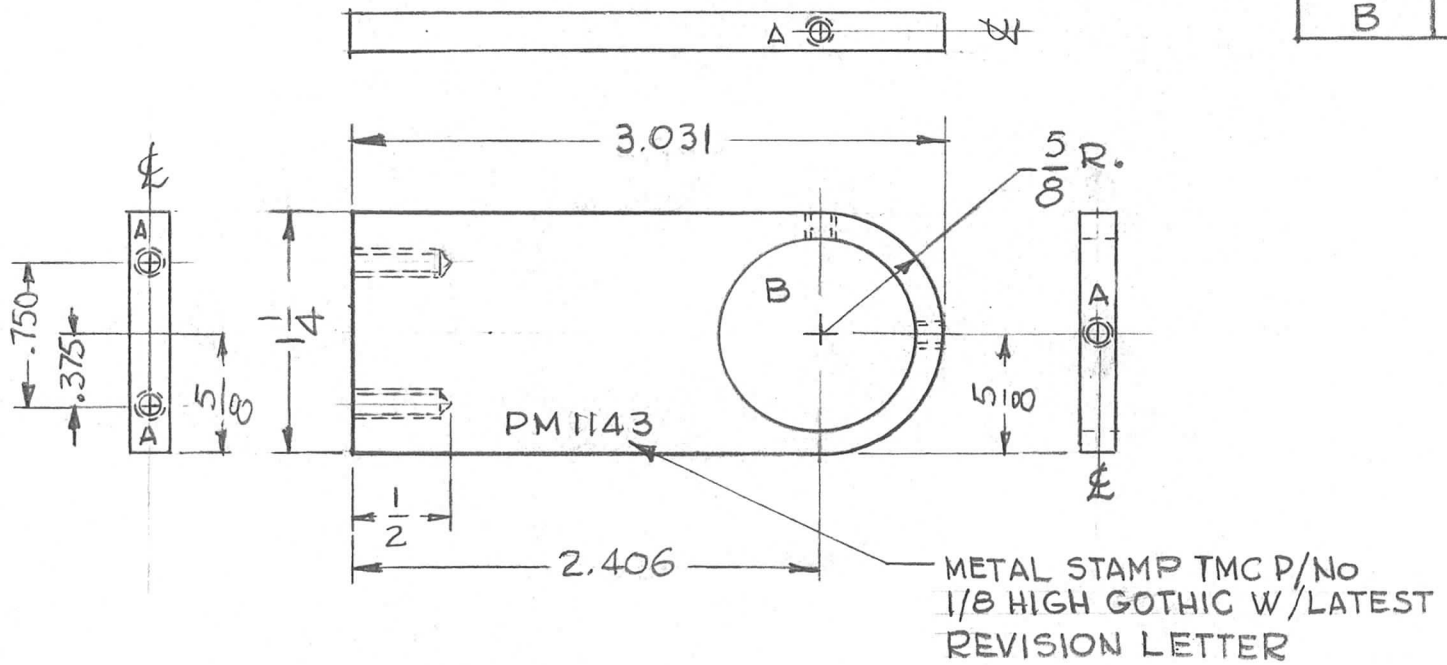
A	TMC P/N 1/16 HIGH WAS 1/8	2-19-69	19224	GE	10	OP													
Ø	ORIGINAL RELEASE FOR PRODUCTION	4-9-65	Ø	Ø															
X3	DIM .1875 WAS .1873	12-1-64		G.D.L.															
X2	DWG NO. WAS MS4010	10-23-64	+	WB															
X1	.031 WAS .027, .944 WAS 1.034 1.032 WAS 1.125	10-23-64	++	WB															
X	EXPERIMENTAL REL.	8/28/64	++	WB															
SYM	DESCRIPTION	DATE	CH. NO.	DRAFTS	CHECKER	ENG. APP.													
UNLESS OTHERWISE SPECIFIED DIMENSIONS ARE IN INCHES AND INCLUDE CHEMICALLY APPLIED OR PLATED FINISHES		SCALE		DO NOT SCALE															
DECIMALS .X ± .05 .XX ± .01 .XXX ± .005		FRACTIONS ± 1/64 ANGLES ± 0° 30'		CODE A		2024-73		S404 YEL. IRIDITE		WB		@		EBo		PM 1142		A	
TOLERANCES						TYPE & TEMPER		HEAT TREAT. SPEC.		DRAWN		CHECKED		MECH. DES. APP.		ELEC. DES. APP.			

PRELIMINARY DRAWING

REQ. PER UNIT 1	USED ON		PM1143	Ø
	MODEL VLRB-1	ASS'Y. NO.		

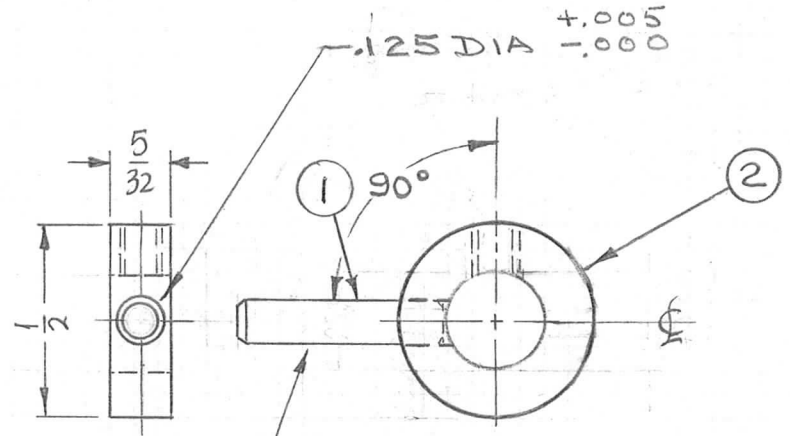
Use For Production

HOLE	DESCRIPTION	REQ.
A	DR. & TAP 4-40	4
B	1.000 $\begin{smallmatrix} +.002 \\ -.000 \end{smallmatrix}$ DIA.	1



SYM	DESCRIPTION	DATE	CH. NO.	DRAFTS	CHECKER	ENG. APP.	REQ. ITEM	PART NO.	O. POSE	DESCRIPTION	SYMBOL	
Ø	ORIGINAL RELEASE FOR PRODUCTION	4.9.65	Ø	Ø				3/16 THK.		THE TECHNICAL MATERIEL CORP. MAMARONECK, NEW YORK		
X	EXPER. RELEASE	11-16-64		G.D.L				ALUMINUM		BRACKET MTG. DIAL (RIGHT)		
	UNLESS OTHERWISE SPECIFIED DIMENSIONS ARE IN INCHES AND INCLUDE CHEMICALLY APPLIED OR PLATED FINISHES	SCALE	1:1					2024-T3		G.D.L	@	<i>[Signature]</i>
	DECIMALS .X ± .05 .XX ± .01 .XXX ± .005	FRACTIONS ± 1/64 ANGLES ± 0° 30'	CODE A					S404 YEL. IRIDITE			<i>[Signature]</i>	PM1143 Ø
							FINISH & SPEC. NO.	ELEC. DES. APP.	MECH. DES. APP.			

REQ. PER UNIT	USED ON			PM1144 Ø
	MODEL	ASS'Y. NO.	DATE	
1	HFIR-1		10-22-64	



NOTE:
REMOVE BURRS & SHARP EDGES

PRESS FIT
PIN INTO HOLE
AS SHOWN.

						1	2	PM786-3	COLLAR, SHAFT	
						1	1	PN116-A-49-5	PIN, DOWEL	
						REQ. ITEM		PART NO.	EATON	DESCRIPTION
Ø	ORIGINAL RELEASE FOR PRODUCTION	3-19-65	Ø	ØI.				1/2 DIA	THE TECHNICAL MATERIEL CORP. MAMARONECK, NEW YORK	
X ₁	PIN DETAIL DELE; IT.(1) ADD. TO B/M	12-7-64	X ₁	9L.				STOCK SIZE	ACTUATOR, LINK	
X	EXP. RELEASE	10-22-64	X	SRG				STAINLESS STEEL		
SYM	DESCRIPTION	DATE	CH. NO.	DRAFTS	CHECKER	ENG. APP.		MATERIAL		
UNLESS OTHERWISE SPECIFIED DIMENSIONS ARE IN INCHES AND INCLUDE CHEMICALLY APPLIED OR PLATED FINISHES		SCALE	2:1							
DECIMALS	FRACTIONS	CODE								
.X ± .05	± 1/64	A								
.XX ± .01	ANGLES									
.XXX ± .005	± 0° 30'									
	TOLERANCES									
		TYPE & TEMPER		HEAT TREAT. SPEC.		DRAWN		CHECKED		FINAL APPROVAL
		5404 YELLOW IRIDITE				JPE		B/B.		PM1144 Ø
		FINISH & SPEC. NO.		ELEC. DES. APP.		MECH. DES. APP.				

STANDARD DRAWING

REQ. PER UNIT

USED ON

MODEL

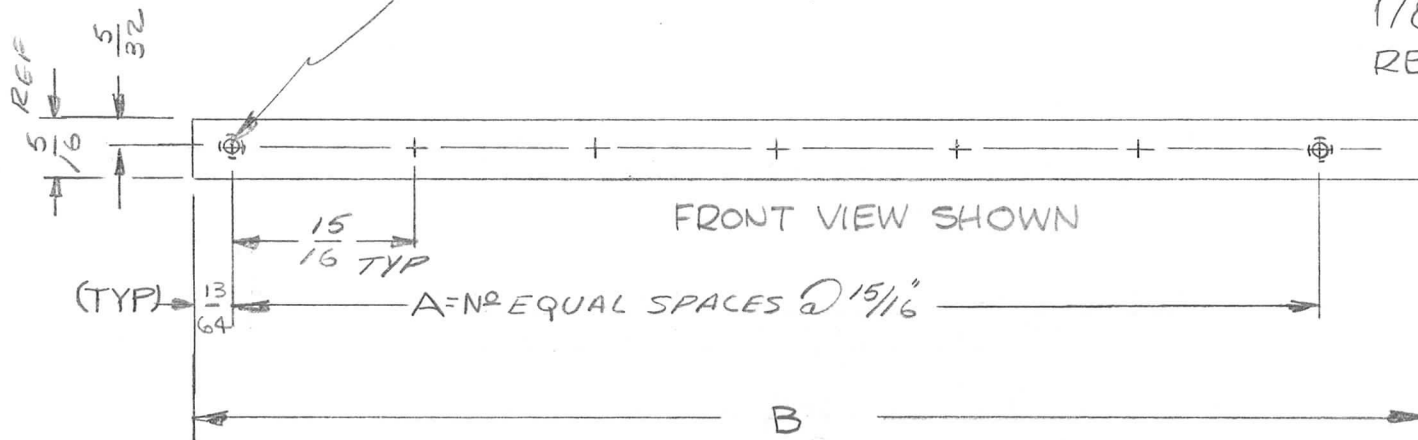
ASS'Y. NO.

DATE

PM1145 B

NO. 47 (.0785) DRILL & TAP #3-48 NC-2B THD

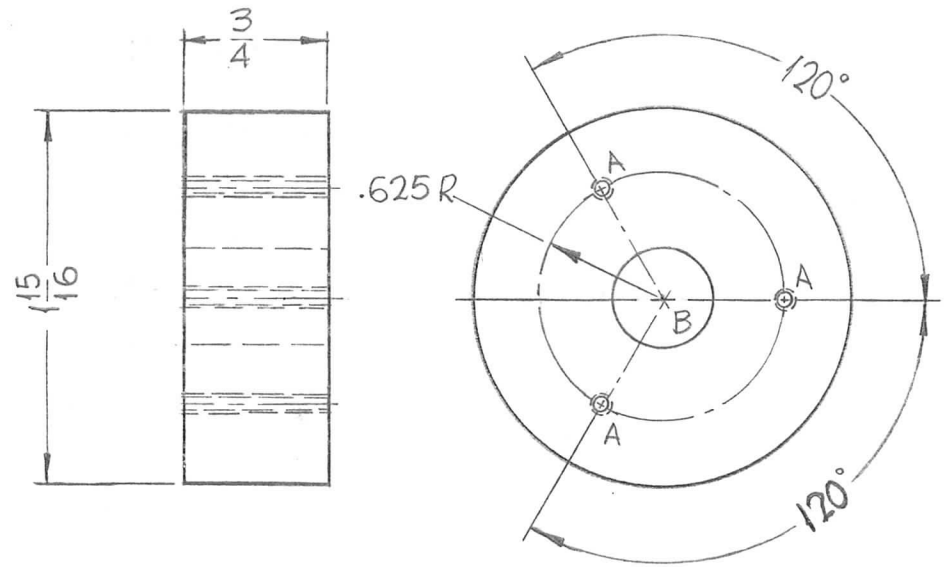
METAL STAMP TMC PT. NO. 1/8 GOTHIC, W/LATEST REV. LETTER, ON REAR.



TMC PT. NO.	A	B-OVERALL LENGTH	NO. RELAY SOCKETS MTD
FM1145-1	0	3/4	1
-2	1	1 1/16	2
-3	2	2 5/8	3
-4	3	3 9/16	4
-5	4	4 1/2	5
-6	6	6 3/8	7
PM1145-7	8	8 1/4	9
PM1145-8	9	9 3/16	10

B	PM1145-8 ADDED, -4" B" WAS 4 9/16	618.65	14284	D.V.V.	JCB	X	REQ.	ITEM	PART NO.	EATON	DESCRIPTION	SK-3071-PM9	SYMBOL		
A	COMPLETELY REVISED	5/18/65	14095	CUL	JL	JEE	5/16 WIDEX X 1/8 THK		THE TECHNICAL MATERIEL CORP. MAMARONECK, NEW YORK						
Ø	ORIGINAL RELEASE FOR PRODUCTION	2/10/65	Ø	JL	JCB		STOCK SIZE		BRASS						
X	EXPER. RELEASE	1/26/65	X	JL	JM		MATERIAL		BAR, MOUNTING, RELAY						
SYM	DESCRIPTION	DATE	CH. NO.	DRAFTS	CHECKER	ENG. APP.	1/2 HARD		JL	JM	JCB	JL			
UNLESS OTHERWISE SPECIFIED DIMENSIONS ARE IN INCHES AND INCLUDE CHEMICALLY APPLIED OR PLATED FINISHES		SCALE		4		TYPE & TEMPER		HEAT TREAT. SPEC.		DRAWN		CHECKED		FINAL APPROVAL	
DECIMALS .X ± .05 .XX ± .01 .XXX ± .005		FRACTIONS ± 1/64 ANGLES ± 0° 30'		CODE A		CADMIUM PLATE S105		FINISH & SPEC. NO.		JEE 2/8/65		W. JORDAN 2/8/65		ELEC. DES. APP. MECH. DES. APP.	
													PM1145 B		

REQ. PER UNIT	USED ON			PM 1146 Ø
	MODEL	ASS'Y. NO.	DATE	
2	COPA-2		11-5-64	



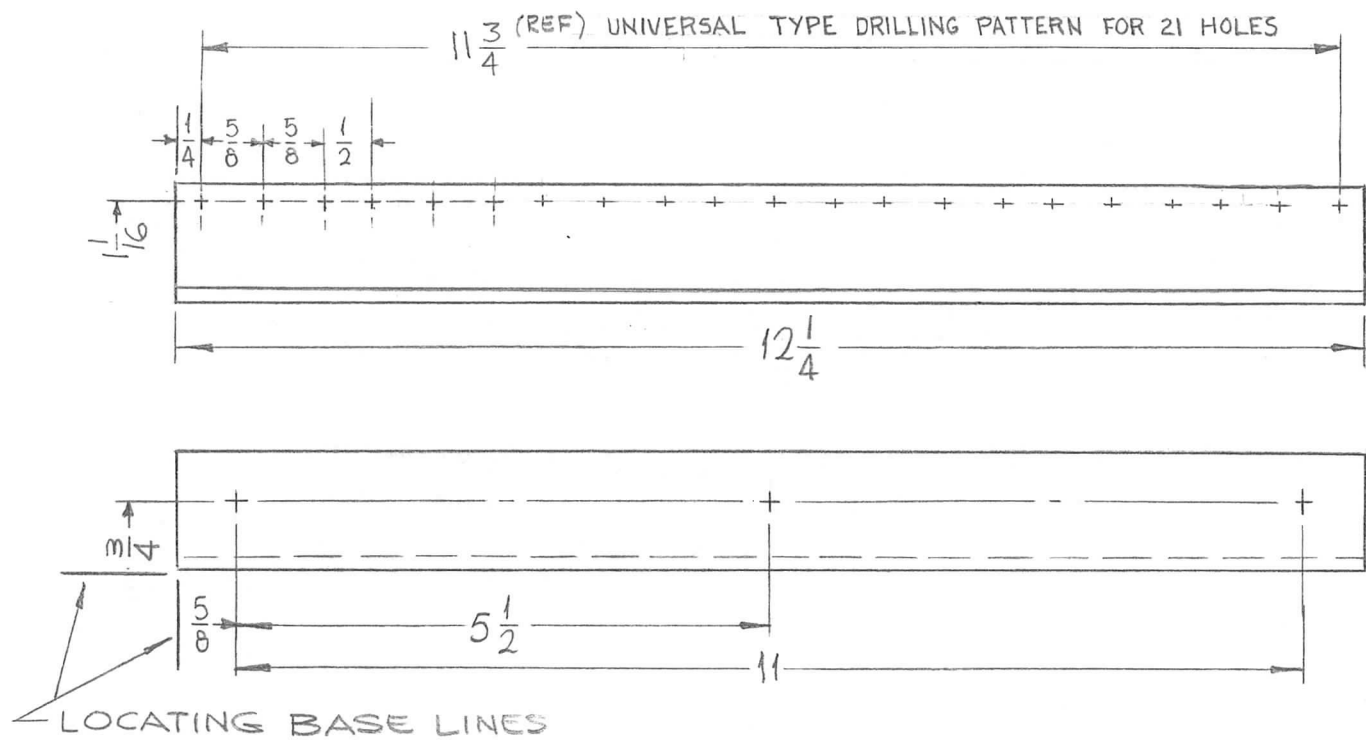
HOLE	DESCRIPTION	REQ.
A	DRILL & TAP FOR 4-40	3
B	.510 DIA.	1

NOTE:
REMOVE ALL BURRS &
SHARP EDGES

SYM	DESCRIPTION	DATE	CH. NO.	DRAFTS	CHECKER	ENG. APP.	REQ. ITEM	PART NO.	M. STURMER DESCRIPTION	SYMBOL	
Ø	ORIGINAL RELEASE FOR PRODUCTION	11-17-64	Ø	SRG			AS NOTED		THE TECHNICAL MATERIEL CORP. MAMARONECK, NEW YORK SPACER		
X ₁	3/4 DIM WAS 1/32	11-13-64	X ₁	SRG			STOCK SIZE				
X	EXP. RELEASE	11-5-64	X	SRG			ALUMINUM				
UNLESS OTHERWISE SPECIFIED DIMENSIONS ARE IN INCHES AND INCLUDE CHEMICALLY APPLIED OR PLATED FINISHES							SCALE				
							1:1				
							2024-T4	#	SRG	@ 11-13-64	RAL
							S404 YELLOW IRIDITE				
							FINISH & SPEC. NO.	ELEC. DES. APP.	MECH. DES. APP.		
DECIMALS .X ± .05 .XX ± .01 .XXX ± .005		FRACTIONS ± 1/64 ANGLES ± 0° 30'		TOLERANCES		CODE A	PM 1146 Ø				

REQ. PER UNIT	USED ON			PM 1147 Ø
	MODEL	ASS'Y. NO.	DATE	
1	COPA-2		11-4-64	

HOLES	DESCRIPTION	REQ.
ALL	15/64 DIA.	24



NOTE:
REMOVE ALL BURRS
AND SHARP EDGES.

SYM	DESCRIPTION	DATE	CH. NO.	DRAFTS	CHECKER	ENG. APP.	REQ. ITEM	PART NO.	M. STURMER	DESCRIPTION	SYMBOL
Ø	ORIGINAL RELEASE FOR PRODUCTION	11-17-64	Ø	J.P.			1-1/4 X 1-1/4 X 11 GA.			THE TECHNICAL MATERIEL CORP. MAMARONECK. NEW YORK	
X	EXP. RELEASE	11-4-64	X	SRG			STEEL			BRACKET, PANEL MTG.	
							MILD		SRG	@ 11-16-64	RDC
							TYPE & TEMPER	HEAT TREAT. SPEC.	DRAWN	CHECKED	FINAL APPROVAL
							S520 BLUE-GREY TEX.			11-16-64	PM 1147 Ø
							FINISH & SPEC. NO.		ELEC. DES. APP.	MECH. DES. APP.	

UNLESS OTHERWISE SPECIFIED
DIMENSIONS ARE IN INCHES AND INCLUDE
CHEMICALLY APPLIED OR PLATED FINISHES

SCALE 1/2:1

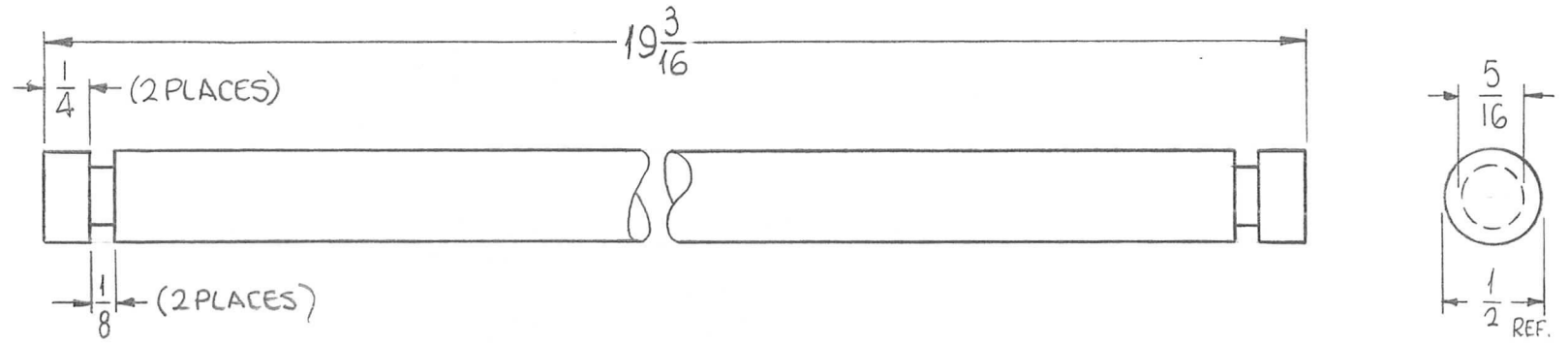
DECIMALS
.X ± .05
.XX ± .01
.XXX ± .005

FRACTIONS
± 1/64
ANGLES
± 0° 30'

TOLERANCES

CODE
A

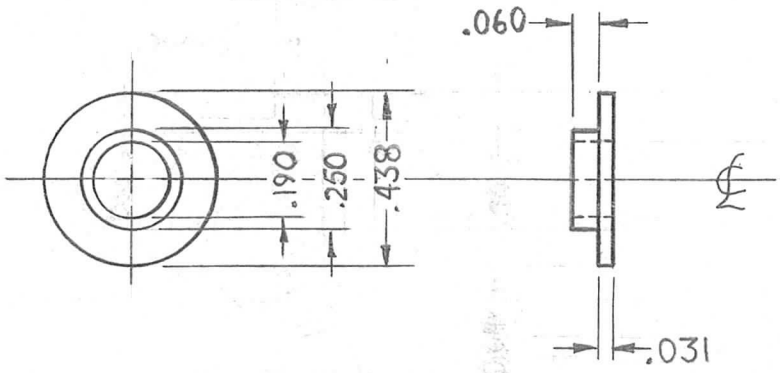
REQ. PER UNIT	USED ON			PM1148 \emptyset
	MODEL	ASS'Y. NO.	DATE	
1	COPA-2		11-5-64	



NOTE:
REMOVE ALL BURRS & SHARP EDGES.

REQ.	ITEM	PART NO.	M. STURMER DESCRIPTION				SYMBOL	
		1/2" ROD	THE TECHNICAL MATERIEL CORP.					
		STOCK SIZE	MAMARONECK, NEW YORK					
\emptyset	ORIGINAL RELEASE FOR PRODUCTION	11-17-64	\emptyset	92				
X	EXP. RELEASE	11-5-64	X	SRG				
SYM	DESCRIPTION	DATE	CH. NO.	DRAFTS	CHECKER	ENG. APP.		
UNLESS OTHERWISE SPECIFIED DIMENSIONS ARE IN INCHES AND INCLUDE CHEMICALLY APPLIED OR PLATED FINISHES		SCALE						
		1:1						
DECIMALS	FRACTIONS	CODE						
.X \pm .05	\pm 1/64	A						
.XX \pm .01	ANGLES							
.XXX \pm .005	\pm 0° 30'							
TOLERANCES								
		TYPE & TEMPER		HEAT TREAT. SPEC.		DRAWN	CHECKED	FINAL APPROVAL
						SRG	@ 11-16-64	RAC
		FINISH & SPEC. NO.		ELEC. DES. APP.		MECH. DES. APP.		PM1148 \emptyset

REQ. PER UNIT	USED ON			PM1151	Ø
	MODEL	ASS'Y. NO.	DATE		
8	CHG-2				



NOTE:
USED FOR CV-115 ADAPTATION.

SYM	DESCRIPTION	DATE	CH. NO.	DRAFTS	CHECKER	ENG. APP.	REQ. ITEM	PART NO.	DESCRIPTION	SYMBOL
Ø	ORIGINAL RELEASE FOR PRODUCTION	11-25-64	Ø	2L					O. POSE	
								— u —	THE TECHNICAL MATERIEL CORP. MAMARONECK. NEW YORK	
								STOCK SIZE		
								BRASS	WASHER, SHOULDER	
								MATERIAL		
								1/2 HARD	9. Swana @ 11-25-64	
								— u —		
								TYPE & TEMPER	DRAWN	CHECKED
								HEAT TREAT. SPEC.		FINAL APPROVAL
								S135 NICKEL PLATE		
								FINISH & SPEC. NO.	ELEC. DES. APP.	MECH. DES. APP.
										PM1151
										Ø

UNLESS OTHERWISE SPECIFIED
DIMENSIONS ARE IN INCHES AND INCLUDE
CHEMICALLY APPLIED OR PLATED FINISHES

DECIMALS
.X ± .05
.XX ± .01
.XXX ± .005

FRACTIONS
± 1/64
ANGLES
± 0° 30'

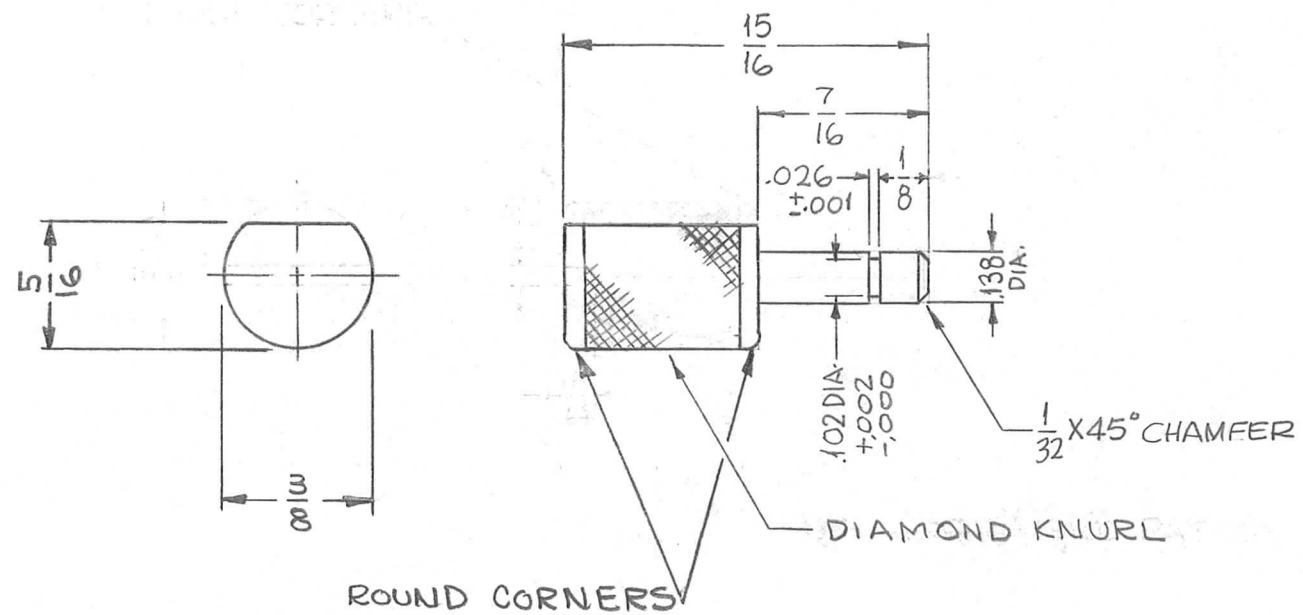
TOLERANCES

SCALE
2:1

CODE
A

REQ. PER UNIT	USED ON		
	MODEL	ASS'Y. NO.	DATE
1	LFRA-1	A3988	11-12-64

PM1152 B



REMOVE ALL BURRS & SHARP EDGES

B	DIM 5/16 WAS 3/8 DIA. DIM 3/8 ADDED; FLAT ADDED	4-15-65	13809	<i>SRG</i>	<i>RCB</i>		REQ. ITEM	PART NO.	0 POSE	DESCRIPTION	SYMBOL
A	KNURL WAS STRAIGHT	1-5-65	13173	<i>SRG</i>	<i>RCB</i>			3/8 DIA. BAR	THE TECHNICAL MATERIEL CORP. MAMARONECK. NEW YORK		
Ø	ORIGINAL RELEASE FOR PRODUCTION	11-25-64	Ø	<i>SRG</i>			STOCK SIZE				
X	EXP. RELEASE	11-12-64	X	<i>SRG</i>				STAINLESS STEEL	STOP, ANTENNA		
SYM	DESCRIPTION	DATE	CH. NO.	DRAFTS	CHECKER	ENG. APP.	MATERIAL				
UNLESS OTHERWISE SPECIFIED DIMENSIONS ARE IN INCHES AND INCLUDE CHEMICALLY APPLIED OR PLATED FINISHES		SCALE					#303		SRG	@ 11-17-64	<i>RCB</i>
DECIMALS .X ± .05 .XX ± .01 .XXX ± .005		FRACTIONS ± 1/64 ANGLES ± 0° 30'		CODE A			TYPE & TEMPER	HEAT TREAT. SPEC.	DRAWN	CHECKED	FINAL APPROVAL
TOLERANCES							S104 PASSIVATE		<i>SRG</i>	<i>M. Hoffman</i>	PM1152 B
							FINISH & SPEC. NO.		ELEC. DES. APP.	MECH. DES. APP.	

THE CONTENTS OF THIS DRAWING ARE THE EXCLUSIVE PROPERTY OF THE TECHNICAL MATERIEL CORP. ITS UNAUTHORIZED USE FOR REPRODUCTION IN WHOLE OR IN PART IS STRICTLY FORBIDDEN.

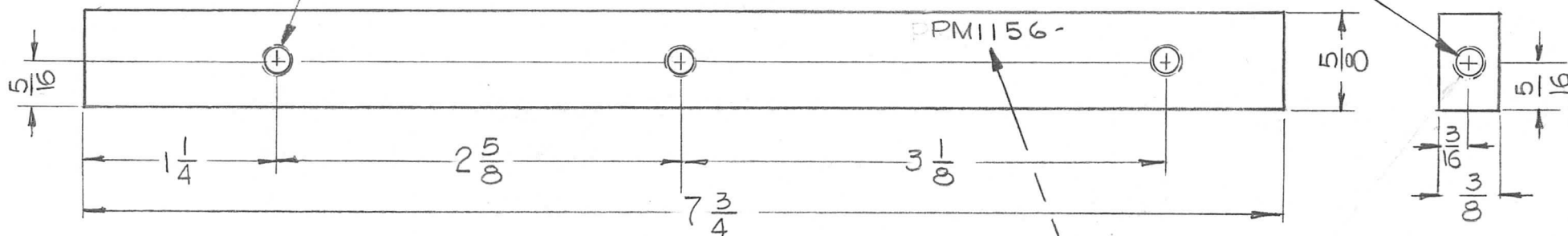
REQ. PER UNIT	USED ON		
	MODEL	ASS'Y. NO.	DATE
1	GPT-10KLF	AX531	4-9-63

PM1156



NO. 29 (.1360) DRILL & TAP NO. 8-32 NC-2B TH'D THRU (3-REQ'D)

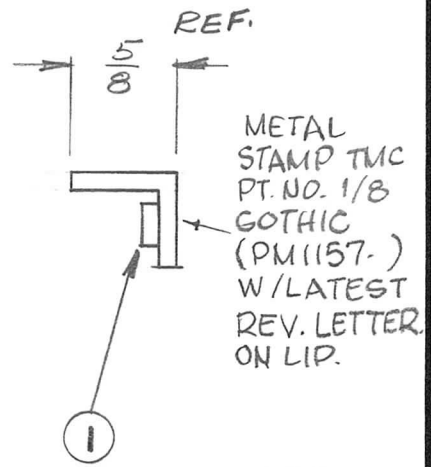
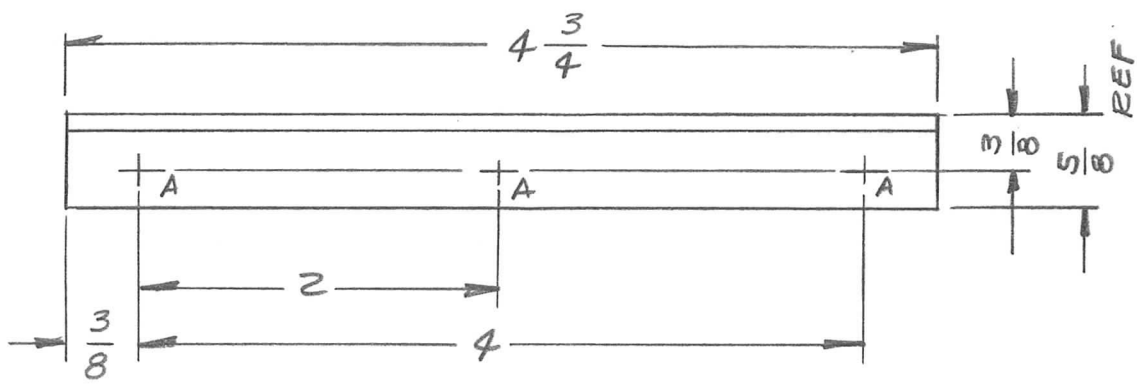
NO. 29 (.1360) DRILL X 3/4 DP & TAP NO. 8-32 NC-2B TH'D X 1/2 DP (BOTH ENDS)



METAL STAMP 1/8 HIGH GOTHIC TMC PT. NO. W/LATEST REV. LETTER

REQ.	ITEM	PART NO.	DESCRIPTION				SYMBOL
Ø	ORIGINAL RELEASE FOR PRODUCTION	3/24/66	Ø	HLA	Jde	THE TECHNICAL MATERIEL CORP. MAMARONECK, NEW YORK	SUPPORT, FAN BOX
X ₁	REVISED DRILLING & TAPPING NOTES	2/9/65		JL			
X	EXP. RELEASE	4/9/63		GDL			
SYM	DESCRIPTION	DATE	CH. NO.	DRAFTS	CHECKER	ENG. APP.	
UNLESS OTHERWISE SPECIFIED DIMENSIONS ARE IN INCHES AND INCLUDE CHEMICALLY APPLIED OR PLATED FINISHES			SCALE			FULL	
DECIMALS .X ± .05 .XX ± .01 .XXX ± .005		FRACTIONS ± 1/64 ANGLES ± 0° 30'		CODE			
TOLERANCES							
		5052-H32		G.D.L.		JCB	
		S404-IRIDITE, 14-2 AL-COAT		DRAWN		CHECKED	
		FINISH & SPEC. NO.		ELEC. DES. APP.		MECH. DES. APP.	
						FINAL APPROVAL	
						PM1156	

REQ. PER UNIT	USED ON			PM1157	Ø
	MODEL	ASS'Y. NO.	DATE		
2	RTIA-1	A4063	1-25-65		

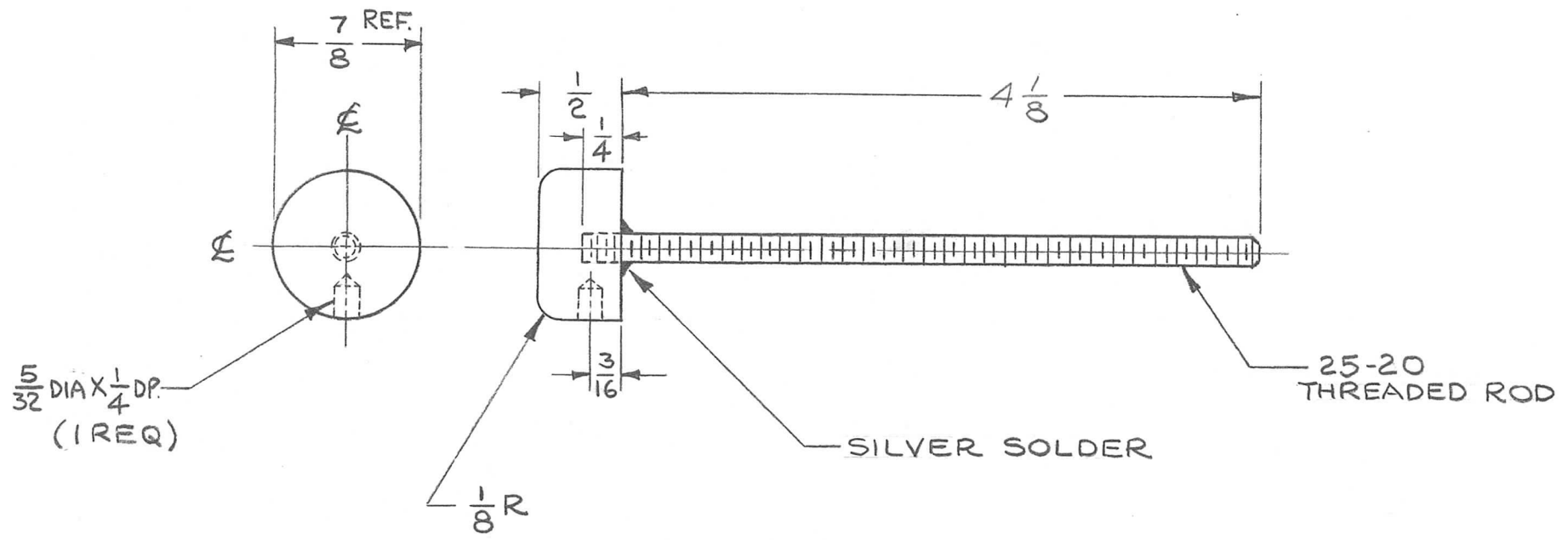


HOLE DESCRIPTION REQ.
 A .221-.224 DIA. 3

MOUNT IN ALL "A" HOLES AS SHOWN AFTER FINISHING

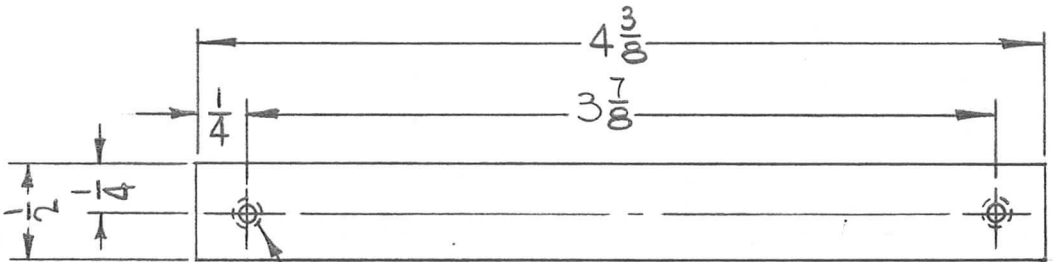
						3	1	NT129-832-6	NUT, PLAIN, SPLINE	A									
						REQ. ITEM		PART NO.	EATON	DESCRIPTION	SYMBOL								
						5/8 x 5/8 x 1/8 THK			THE TECHNICAL MATERIEL CORP. MAMARONECK, NEW YORK										
Ø	ORIGINAL RELEASE FOR PRODUCTION	2.8.65	Ø	J.F.		EXTRUDED ANGLE ALUMINIUM			BRACKET, SUPPORT, XFMR (±12V POWER SUPPLY)										
X2	REDRAWN - NO CHANGES	1.25.65	X2	J.F.	J.M.	MATERIAL													
SYM	DESCRIPTION	DATE	CH. NO.	DRAFTS	CHECKER	ENG. APP.	ALCOA DIE# 79-0			DRAWN		CHECKED	FINAL APPROVAL						
UNLESS OTHERWISE SPECIFIED DIMENSIONS ARE IN INCHES AND INCLUDE CHEMICALLY APPLIED OR PLATED FINISHES						SCALE 4						W. JORDAN		2/8/65		PM1157		Ø	
DECIMALS .X ± .05 .XX ± .01 .XXX ± .005		TOLERANCES		FRACTIONS ± 1/64 ANGLES ± 0° 30'		CODE A		5404 YELLOW IRIDITE		FINISH & SPEC. NO.		ELEC. DES. APP.		MECH. DES. APP.					

REQ. PER UNIT	USED ON			PM1160	A
	MODEL	ASS'Y. NO.	DATE		
7	HVRB-1	AX543	12.21.64		



SYM	DESCRIPTION	DATE	CH. NO.	DRAFTS	CHECKER	ENG. APP.	REQ. ITEM	PART NO.	BUDETTI DESCRIPTION	SYMBOL	
A	4 1/8 DIA was 3 7/8	9/16/65	14808	DKK	QCB	MM	7/8 DIA. ROD		THE TECHNICAL MATERIEL CORP. MAMARONECK, NEW YORK	CONTACT BUTTON	
Ø	ORIGINAL RELEASE FOR PRODUCTION	8/12/65	Ø	H.V.V.			STOCK SIZE				
X	EXPER. RELEASE	1.14.64	X	LB			BRASS				
	UNLESS OTHERWISE SPECIFIED DIMENSIONS ARE IN INCHES AND INCLUDE CHEMICAL AND PLATED FINISHES	SCALE	1:1				HALF HARD		1.14.65	QCB	QCB
	FRACTIONS 1/64	CODE	Δ				TYPE & TEMPER	HEAT TREAT. SPEC.	DRAWN	CHECKED	FINAL APPROVAL
							S135-NICKEL PLATE				PM1160 A
							FINISH & SPEC. NO.		ELEC. DES. APP.	MECH. DES. APP.	

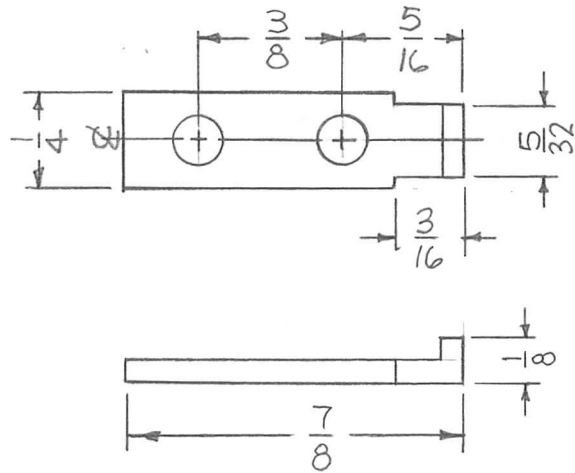
REQ. PER UNIT	USED ON			PM1161	Ø
	MODEL	ASS'Y. NO.	DATE		
4	HVRB-1		12-22-64		



10-32 DRILL & TAP THRU
2 HOLES REQ'D.

SYM	DESCRIPTION	DATE	CH. NO.	DRAFTS	CHECKER	ENG. APP.	REQ. ITEM	PART NO.	DESCRIPTION	SYMBOL		
Ø	ORIGINAL RELEASE	9/26/69			W			1/8 THK.	THE TECHNICAL MATERIEL CORP. MAMARONECK, NEW YORK	BAR, NUT		
X	EXPER. RELEASE	12-22-64			HCA			BRASS				
								MATERIAL				
UNLESS OTHERWISE SPECIFIED DIMENSIONS ARE IN INCHES AND INCLUDE CHEMICALLY APPLIED OR PLATED FINISHES							SCALE 1:1		HALFHARD	H. AUSTIN	S/M 9/26/69 FINAL APPROVAL	
							TYPE & TEMPER	HEAT TREAT. SPEC.	DRAWN	CHECKED		
DECIMALS .X ± .05 .XX ± .01 .XXX ± .005							FRACTIONS ± 1/64 ANGLES ± 0° 30'		TOLERANCES		PM1161	Ø
							FINISH & SPEC. NO.		ELEC. DES. APP.	MECH. DES. APP.		

REQ. PER UNIT	USED ON			PM1163	Ø
	MODEL	ASS'Y. NO.	DATE		
2	GPT-10KLF	AX531	2-28-66		

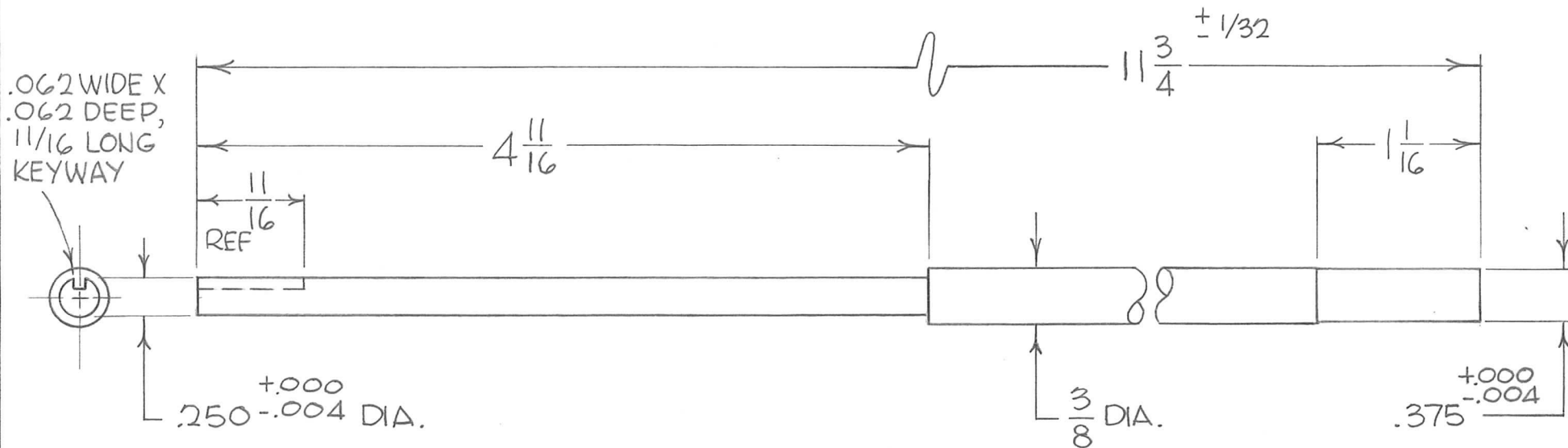


HOLES:
9/64 DIA. (2REQ.)

REQ.	ITEM	PART NO.	F. BUDETTI DESCRIPTION				SYMBOL
			.062 THICK				THE TECHNICAL MATERIEL CORP. MAMARONECK. NEW YORK
			STOCK SIZE				
			STAINLESS STEEL				PLATE, MULTIPLE, LOCK STOP
			MATERIAL				
			303				
			TYPE & TEMPER	HEAT TREAT. SPEC.	DRAWN	CHECKED	FINAL APPROVAL
			S104 PASSIVATE				
			FINISH & SPEC. NO.	ELEC. DES. APP.	MECH. DES. APP.	PM1163	Ø

Ø ORIGINAL RELEASE FOR PRODUCTION	3-1-66	M	Jc	JCB	JDe	
SYM	DESCRIPTION	DATE	CH. NO.	DRAFTS	CHECKER	ENG. APP.
UNLESS OTHERWISE SPECIFIED DIMENSIONS ARE IN INCHES AND INCLUDE CHEMICALLY APPLIED OR PLATED FINISHES		SCALE 1:2				
DECIMALS .X ± .05 .XX ± .01 .XXX ± .005	TOLERANCES	FRACTIONS ± 1/64 ANGLES ± 0° 30'	CODE A			

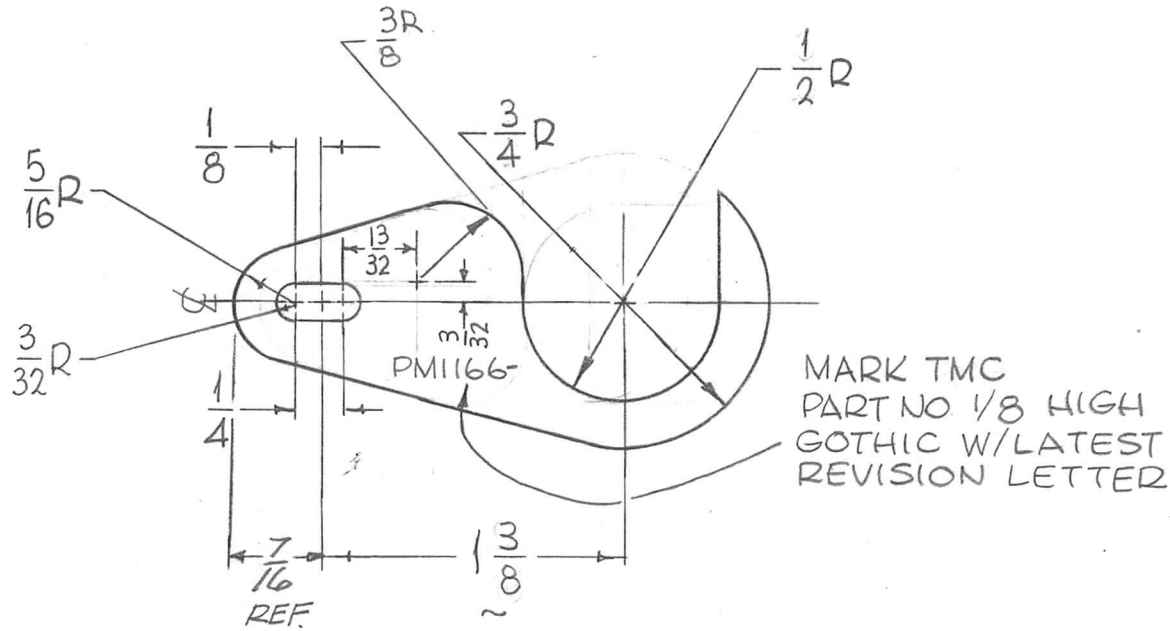
REQ. PER UNIT	USED ON			PM1165 \emptyset
	MODEL	ASS'Y. NO.	DATE	
2	GPT10KLF	AX531	6-17-66	



REQ.	ITEM	PART NO.	BUDETTI	DESCRIPTION	SYMBOL
		AS NOTED	THE TECHNICAL MATERIEL CORP.		
		STOCK SIZE	MAMARONECK. NEW YORK		
\emptyset	ORIGINAL RELEASE FOR PRODUCTION	6-22-66	\emptyset	SHAFT, DRIVE	
SYM	DESCRIPTION	DATE	CH. NO.	CHECKER	ENG. APP.
UNLESS OTHERWISE SPECIFIED DIMENSIONS ARE IN INCHES AND INCLUDE CHEMICALLY APPLIED OR PLATED FINISHES		SCALE			
DECIMALS	TOLERANCES	FRACTIONS	CODE		
.X ± .05		± 1/64			
.XX ± .01		ANGLES			
.XXX ± .005		± 0° 30'			
		303	Jc	QC/B	2. B. [Signature]
		TYPE & TEMPER	HEAT TREAT. SPEC.	DRAWN	CHECKED
		S104-PASSIVATE			
		FINISH & SPEC. NO.	ELEC. DES. APP.	MECH. DES. APP.	PM1165 \emptyset

1/16 1/16 1

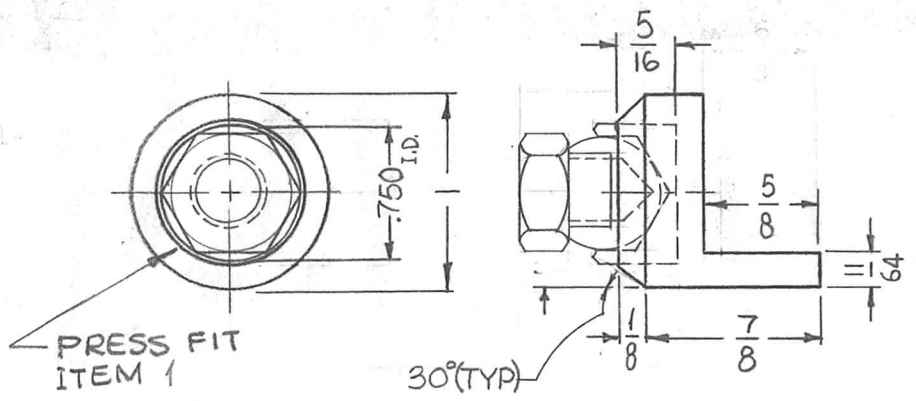
REQ. PER UNIT	USED ON			PM1166	Ø
	MODEL	ASS'Y. NO.	DATE		
2	VLLA-1		1-3-65		



REQ.	ITEM	PART NO.	BUDETTI	DESCRIPTION	SYMBOL											
Ø	ORIGINAL RELEASE FOR PRODUCTION	11-65	Ø	J.V.V.												
X2	1-3/8 WAS 1-9/16, PICTORIAL REVISED	11-11-65	X2	J.P.H.												
X1	ADDED SPEC S245	2/9/65		J.L.												
SYM	DESCRIPTION	DATE	CH. NO.	DRAFTS	CHECKER	ENG. APP.	MATERIAL									
UNLESS OTHERWISE SPECIFIED DIMENSIONS ARE IN INCHES AND INCLUDE CHEMICALLY APPLIED OR PLATED FINISHES							SCALE	1:1	HALF HARD		John C Biele	JCB	11/10/65			
DECIMALS .X ± .05 .XX ± .01 .XXX ± .005							TOLERANCES	FRACTIONS ± 1/64 ANGLES ± 0° 30'	CODE	A	TYPE & TEMPER		HEAT TREAT. SPEC.	DRAWN	CHECKED	FINAL APPROVAL
									S245 SILVER PLATE							
									FINISH & SPEC. NO.		ELEC. DES. APP.	MECH. DES. APP.	PM1166	Ø		

REQ. PER UNIT	USED ON		
	MODEL	ASS'Y. NO.	DATE
1	TST(1)10K	AM124	2-24-65
1	GPT10KLF		2-7-66

PM1170 | A

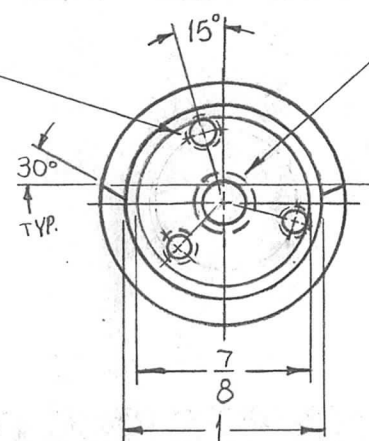


SYM	DESCRIPTION	DATE	CH. NO.	DRAFTS	CHECKER	ENG. APP.	REQ. ITEM	PART NO.	BUDETTI DESCRIPTION	SYMBOL		
A	ITEM 1 ADDED TO PICT	5-4-66	16202	440	QCB	QCB	1	NT150-2	NUT, PAD, TOGGLE			
Ø	ORIGINAL RELEASE	4/15/66	Ø			AB	1" DIA					
X2	ITEM NO 1 WAS NT150 (ERROR)	10/6/65	-M	JC		WRL	STOCK SIZE					
X1	P/N WAS PM1171 (ERROR), DWG WAS ALSO P/O A4113, LATCH ASS'Y	8/16/65	-M	JC		WRL	ALUMINUM					
UNLESS OTHERWISE SPECIFIED DIMENSIONS ARE IN INCHES AND INCLUDE CHEMICALLY APPLIED OR PLATED FINISHES							MATERIAL					
SCALE							2024-T4		SRG	QCB	FINAL APPROVAL	
DECIMALS .X ± .05 .XX ± .01 .XXX ± .005							TYPE & TEMPER		HEAT TREAT. SPEC.		DRAWN	
FRACTIONS ± 1/64 ANGLES ± 0° 30'							S404-IRIDIOTE, 14-2 AL-COAT				MECH. DES. APP.	
TOLERANCES							FINISH & SPEC. NO.		ELEC. DES. APP.		MECH. DES. APP.	
CODE A							A4113				PM1170 A	

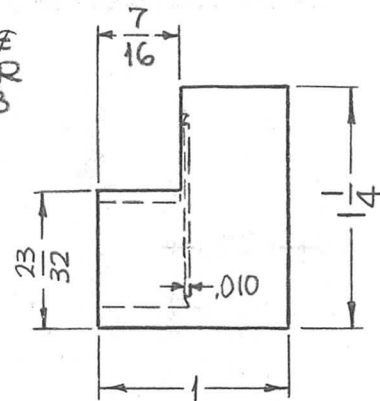
REQ. PER UNIT	USED ON		
	MODEL	ASS'Y. NO.	DATE
1	TST(1)10K	AM124	2-24-66
1	GPT10KLF		2-7-66

PM1171 \emptyset

(3) DRILL & TAP FOR 10-32 THRU 120° APART ON A 3/4 DIA.



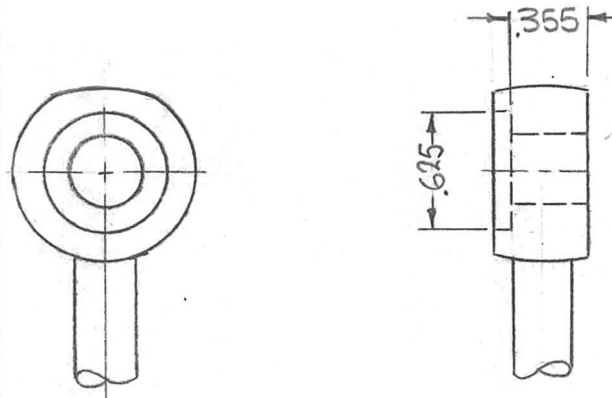
DRILL & TAP FOR 5/16-18



SYM	DESCRIPTION	DATE	CH. NO.	DRAFTS	CHECKER	ENG. APP.	REQ. ITEM	PART NO.	BUDETTI DESCRIPTION	SYMBOL		
\emptyset	ORIGINAL RELEASE	4/15/66	\emptyset						THE TECHNICAL MATERIEL CORP. MAMARONECK, NEW YORK			
X2	.515 DIM DELETED, TAP MADE TO GO THRU	8/23/65	MA	JC			1 1/4 DIA.	STOCK SIZE				
X1	P/N WAS PM1170 (ERROR), DWG WAS ALSO P/O A4113, LATCH ASS'Y	8/16/65	MA	JC				BASS	HOLDER, LATCH			
UNLESS OTHERWISE SPECIFIED DIMENSIONS ARE IN INCHES AND INCLUDE CHEMICALLY APPLIED OR PLATED FINISHES							SCALE		MATERIAL			
DECIMALS .X \pm .05 .XX \pm .01 .XXX \pm .005							FRACTIONS \pm 1/64 ANGLES \pm 0° 30'		CODE A		A4113	
TOLERANCES							TYPE & TEMPER		HEAT TREAT. SPEC.		FINISH & SPEC. NO.	
							HALF HARD FM		NONE		SRC	
							DRAWN		CHECKED		FINAL APPROVAL	
							ELEC. DES. APP.		MECH. DES. APP.		PM1171 \emptyset	

REQ. PER UNIT	USED ON		
	MODEL	ASS'Y. NO.	DATE
1	TST()10K	AM124	2-24-65
1	GPT10KLF		2-7-66

PM1172 \emptyset

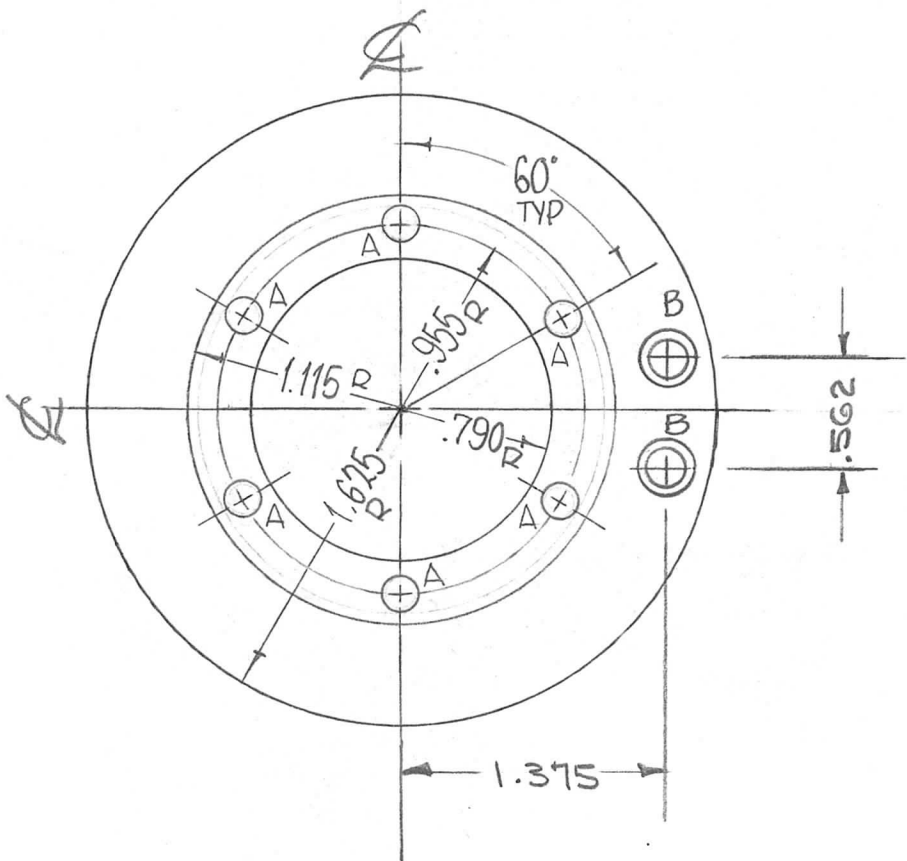


SC164-2
(MODIFIED)

NOTE - REMOVE ALL BURRS & SHARP EDGES

REQ.	ITEM	PART NO.	BUDETTI	DESCRIPTION	SYMBOL							
\emptyset	ORIGINAL RELEASE	7/15/66	\emptyset									
X2	SC162-2 DET. DELETED	7/15/66										
X1	DWG WAS PART OF A4113 LATCH ASS'Y	8/16/65	JC									
SYM	DESCRIPTION	DATE	CH. NO.	DRAFTS	CHECKER	ENG. APP.	MATERIAL					
UNLESS OTHERWISE SPECIFIED DIMENSIONS ARE IN INCHES AND INCLUDE CHEMICALLY APPLIED OR PLATED FINISHES		SCALE						SRC	JCB			
DECIMALS .X \pm .05 .XX \pm .01 .XXX \pm .005	TOLERANCES	FRACTIONS \pm 1/64 ANGLES \pm 0° 30'	CODE A	A4113				TYPE & TEMPER	HEAT TREAT. SPEC.	DRAWN	CHECKED	FINAL APPROVAL
												PM1172 \emptyset
								FINISH & SPEC. NO.	ELEC. DES. APP.	MECH. DES. APP.		

REQ. PER UNIT	USED ON		PM1183 \emptyset
	MODEL	ASS'Y. NO.	
1	TST-10K		11-17-64



HOLES REQ.

A- 13/64 DIA. THRU 6

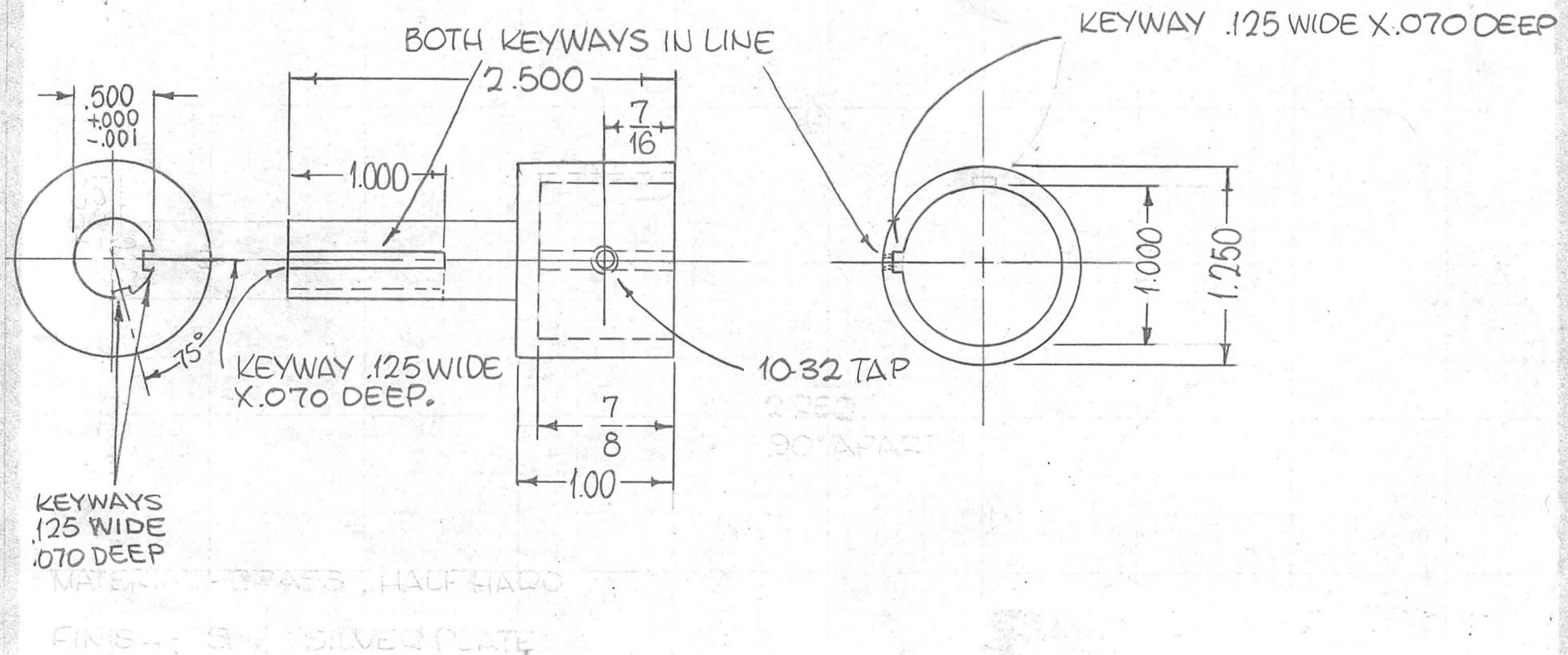
B- DRILL #18 THRU
C'SK 82° TO .337 DIA. 2

UNLESS OTHERWISE SPECIFIED

- POLISH BEFORE PLATING.
- S245 SILVER PLATE BRIGHT
- S423 IRIDIOTE 180 SILVER KOTE
- ROUND ALL CORNERS & EDGES 1/32 R.
- ALL DIMENSIONS APPLY AFTER PLATING.

						REQ. ITEM	PART NO.	F. BUDETTI	DESCRIPTION	PM13	SYMBOL
\emptyset	ORIGINAL RELEASE FOR PRODUCTION	6/17/66	\emptyset	CV	Hde	AS NOTED		THE TECHNICAL MATERIEL CORP. MAMARONECK, NEW YORK			
XI	② "B" HOLES ADDED	11-19-65	-M-	Jc	alc	STOCK SIZE		PLATE, PRESSURE			
X	EXP. RELEASE	12-2-64	X	SRG		BRASS					
SYM	DESCRIPTION	DATE	CH. NO.	DRAFTS	CHECKER	ENG. APP.	MATERIAL				
UNLESS OTHERWISE SPECIFIED DIMENSIONS ARE IN INCHES AND INCLUDE CHEMICALLY APPLIED OR PLATED FINISHES		SCALE		1:1			HALF HARD	John C Biele	Hde 11/5/64	OR B	
DECIMALS .X \pm .05 .XX \pm .01 .XXX \pm .005	TOLERANCES	FRACTIONS \pm 1/64 ANGLES \pm 0° 30'	CODE A				TYPE & TEMPER	HEAT TREAT. SPEC.	DRAWN	CHECKED	FINAL APPROVAL
						SEE NOTES					
						FINISH & SPEC. NO.	ELEC. DES. APP.	MECH. DES. APP.	PM1183 \emptyset		

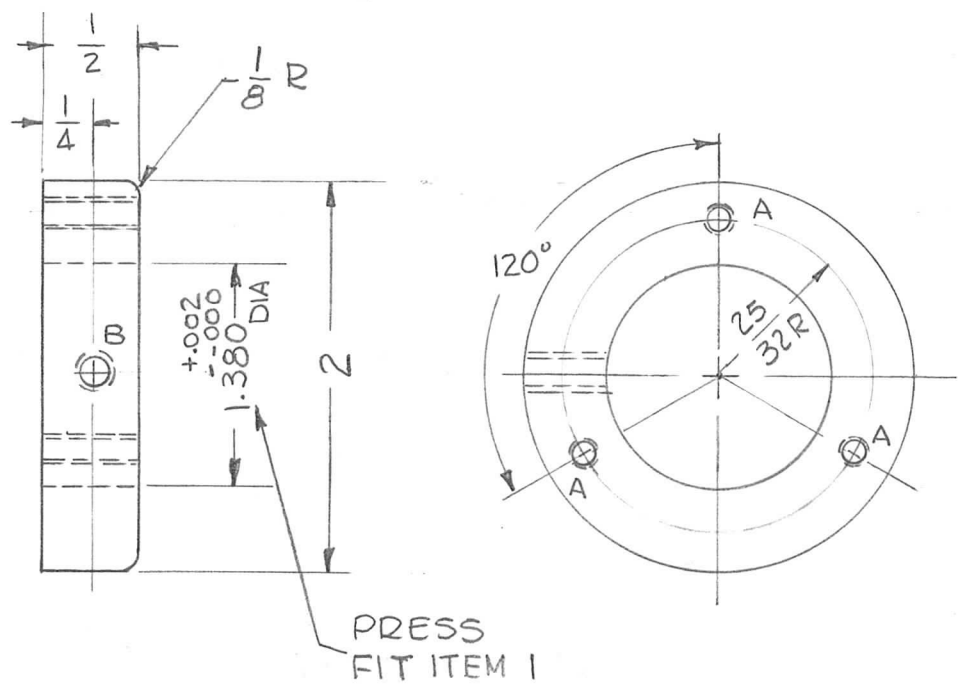
REQ. PER UNIT	USED ON			PM1187 \emptyset
	MODEL	ASS'Y. NO.	DATE	
1	TST-10K		6-24-65	



SYM	DESCRIPTION	DATE	CH. NO.	DRAFTS	CHECKER	ENG. APP.	REQ. ITEM	PART NO.	F. BUDETTI	DESCRIPTION	SYMBOL	
\emptyset	ORIGINAL RELEASE FOR PRODUCTION	4/20/66								THE TECHNICAL MATERIEL CORP. MAMARONECK, NEW YORK	\emptyset	
X2	1 KEYWAY ADDED	7-27-65	X2				SEE DWG					
X1	1 KEYWAY, 1 10-32 TAP, DELETED	6-24-65	X1				BRASS			HUB, BANDSWITCH		
UNLESS OTHERWISE SPECIFIED DIMENSIONS ARE IN INCHES AND INCLUDE CHEMICALLY APPLIED OR PLATED FINISHES							SCALE 1:1		MATERIAL			
DECIMALS .X \pm .05 .XX \pm .01 .XXX \pm .005		FRACTIONS \pm 1/64 ANGLES \pm 0° 30'		TOLERANCES		CODE A	HALF HARD	TYPE & TEMPER	HEAT TREAT. SPEC.	DRAWN	CHECKED	FINAL APPROVAL
							S245 SILVER PLATE S423 SILVER-KOTE		FINISH & SPEC. NO.		ELEC. DES. APP.	MECH. DES. APP.
										PM1187 \emptyset		

REQ. PER UNIT	USED ON			PM1188 A
	MODEL	ASS'Y. NO.	DATE	
1	TST-10K		5-9-65	

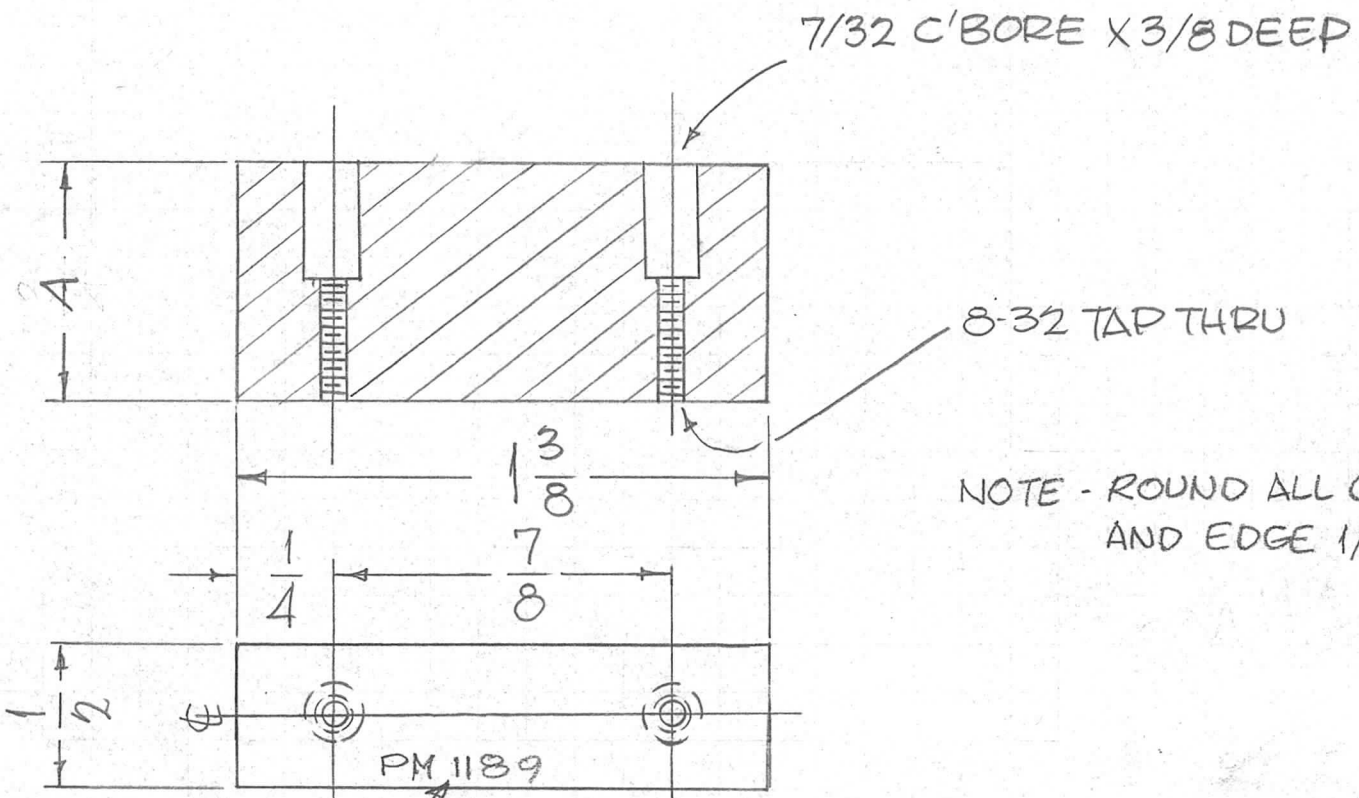
HOLES -
 A-DRILL & TAP 8-32 THD THRU 3 REQ.
 B-DRILL & TAP 1/4-20 THD 1 REQ.



							1	1	PX1294	PLASTIC, ADAPTER						
							REQ.	ITEM	PART NO.	DESCRIPTION	SK 3129-PM23	SYMBOL				
A	ITEM 1 WAS BB133-1			3-8-63	22007	GDL	THE TECHNICAL MATERIEL CORP. MAMARONECK, NEW YORK									
Ø	ORIGINAL RELEASE FOR PRODUCTION			6/17/66	Ø	CV	STOCK SIZE									
X ₁	DIM. 1.380 WAS 1.022 ± .000 BB133-1 ADDED			6-9-65	X ₁	GDL	BRASS									
UNLESS OTHERWISE SPECIFIED DIMENSIONS ARE IN INCHES AND INCLUDE CHEMICALLY APPLIED OR PLATED FINISHES							MATERIAL									
SCALE				1:1			HALF HARD		G.D.L. Hde 6/15/66							
							TYPE & TEMPER		HEAT TREAT. SPEC.		DRAWN		CHECKED		FINAL APPROVAL	
							S135 NICKEL PLATE, BRIGHT				G.D.L. 6/16/66		Hde		PM1188 A	
							FINISH & SPEC. NO.		ELEC. DES. APP.		MECH. DES. APP.					

TMC P/N.	DIM A
PM 1189	3/4
PM 1189-2	13/16

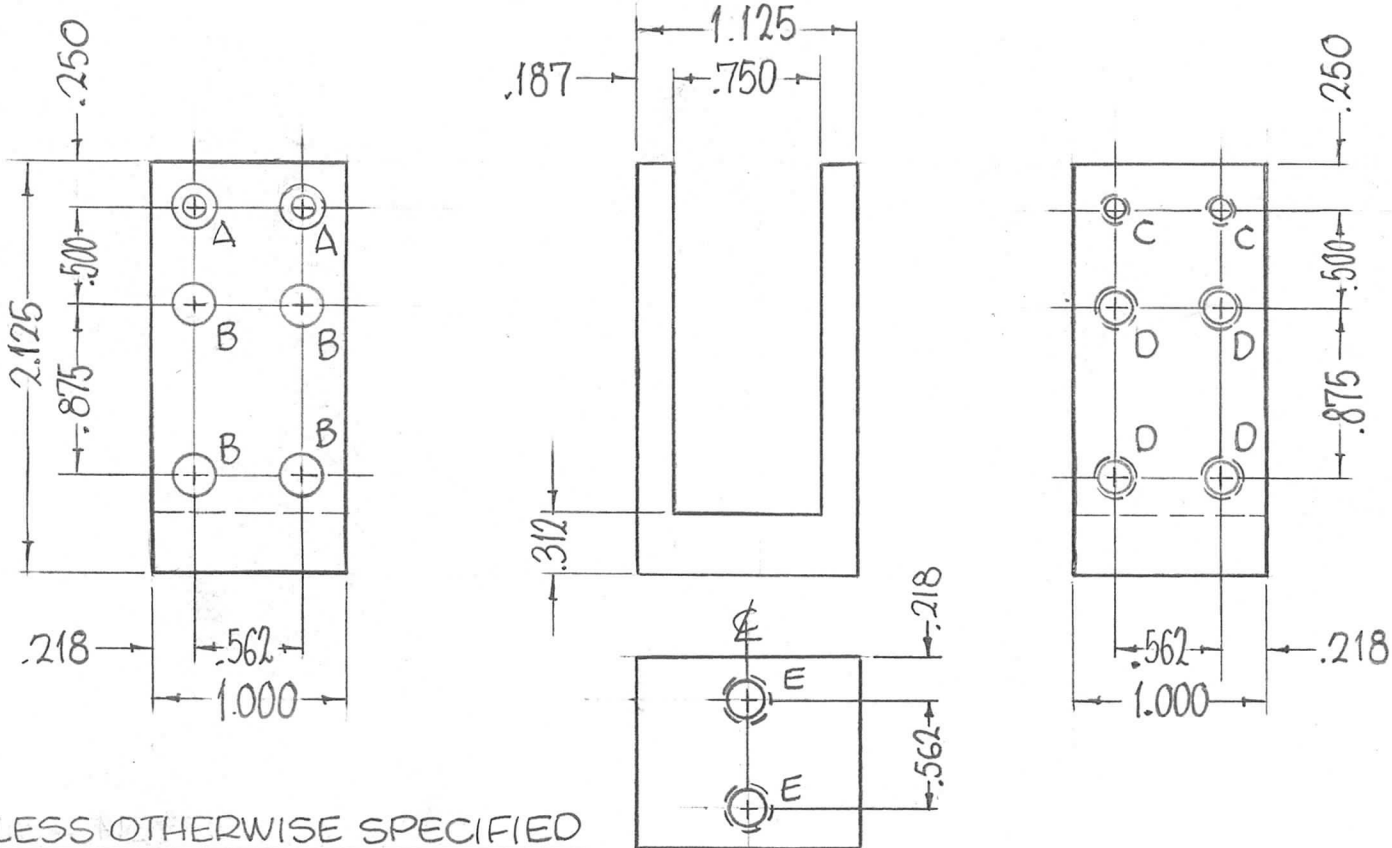
REQ. PER UNIT	USED ON			PM 1189	A
	MODEL	ASS'Y. NO.	DATE		
	TST()10K		7-20-65		



MARK TMC P/NO 1/8 HIGH GOTHIC W/LATEST REV. LETTER MATERIAL 1/2 THK ALUMINUM

REQ.	ITEM	PART NO.				DESCRIPTION			SYMBOL						
		1/2 THK				THE TECHNICAL MATERIEL CORP.									
		STOCK SIZE				MAMARONECK, NEW YORK									
A	DIM. "A" WAS 3/4 P/N CHART ADD.	11/25/69	19661	L.H.R.D.		SPACER, CONTACTS									
Ø	ORIGINAL RELEASE FOR PRODUCTION	6/17/66	Ø	CIV	Hde										
SYM	DESCRIPTION	DATE	CH. NO.	DRAFTS	CHECKER	ENG. APP.									
UNLESS OTHERWISE SPECIFIED DIMENSIONS ARE IN INCHES AND INCLUDE CHEMICALLY APPLIED OR PLATED FINISHES		SCALE		DO NOT SCALE											
DECIMALS .X ± .05 .XX ± .01 .XXX ± .005		FRACTIONS ± 1/64 ANGLES ± 0° 30'		CODE A		2024-T4		S404 YEL. IRIDITE		SRG Hde 6/15/66		O.S. 11/11/69			
TOLERANCES						TYPE & TEMPER		HEAT TREAT. SPEC.		DRAWN		CHECKED		FINAL APPROVAL	
						FINISH & SPEC. NO.		ELEC. DES. APP.		MECH. DES. APP.		PM 1189		A	

REQ. PER UNIT	USED ON		PM1190 \emptyset
	MODEL	ASS'Y. NO.	
1	TST-10K		11-18-64



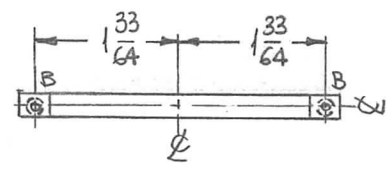
HOLES	REQ.
A- DRILL 11/64 THRU C'BORE 5/16D.X1/8DP.	2
B- 15/64 DIA.	4
C- DRILL & TAP 6-32 TH'DS	2
D- DRILL & TAP 10-32 THDS	4
E- DRILL & TAP 1/4-20 THDS	2

UNLESS OTHERWISE SPECIFIED
 POLISH BEFORE PLATING
 S245-SILVER PLATE BRIGHT
 S423-IRIDITE 18-D SILVER-KOTE
 ROUND ALL CORNERS & EDGES 1/32 R

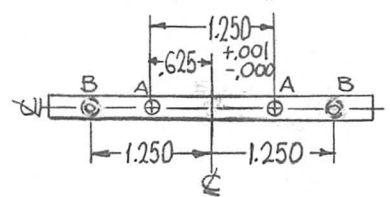
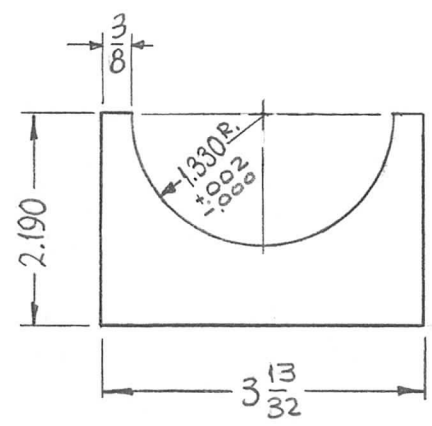
ALL DIMENSIONS APPLY AFTER PLATING.

						REQ. ITEM	PART NO.	F. BUDETTI	DESCRIPTION	PM12	SYMBOL	
\emptyset	ORIGINAL RELEASE FOR PRODUCTION	4/20/66		CIV	JDC	AS NOTED		THE TECHNICAL MATERIEL CORP. MAMARONECK, NEW YORK				
X1	"E" HOLES ADDED	6-5-65	X1	SRG	DA	STOCK SIZE		U BRACKET, MTG., CONT.				
X	EXP. RELEASE	12-2-64	X	SRG		BRASS						
SYM	DESCRIPTION	DATE	CH. NO.	DRAFTS	CHECKER	ENG. APP.	MATERIAL					
UNLESS OTHERWISE SPECIFIED DIMENSIONS ARE IN INCHES AND INCLUDE CHEMICALLY APPLIED OR PLATED FINISHES		SCALE	1:1				HALF HARD		John C Biele	JCB	DOB	Miller
DECIMALS .X \pm .05 .XX \pm .01 .XXX \pm .005	TOLERANCES	FRACTIONS \pm 1/64 ANGLES \pm 0° 30'	CODE	A				TYPE & TEMPER	HEAT TREAT. SPEC.	DRAWN	CHECKED	FINAL APPROVAL
							SEE NOTES					
							FINISH & SPEC. NO.	ELEC. DES. APP.	MECH. DES. APP.	PM1190 \emptyset		

REQ. PER UNIT	USED ON			PM1194	Ø
	MODEL	ASS'Y. NO.	DATE		
1	RFTA-1	A5226	12-9-64		

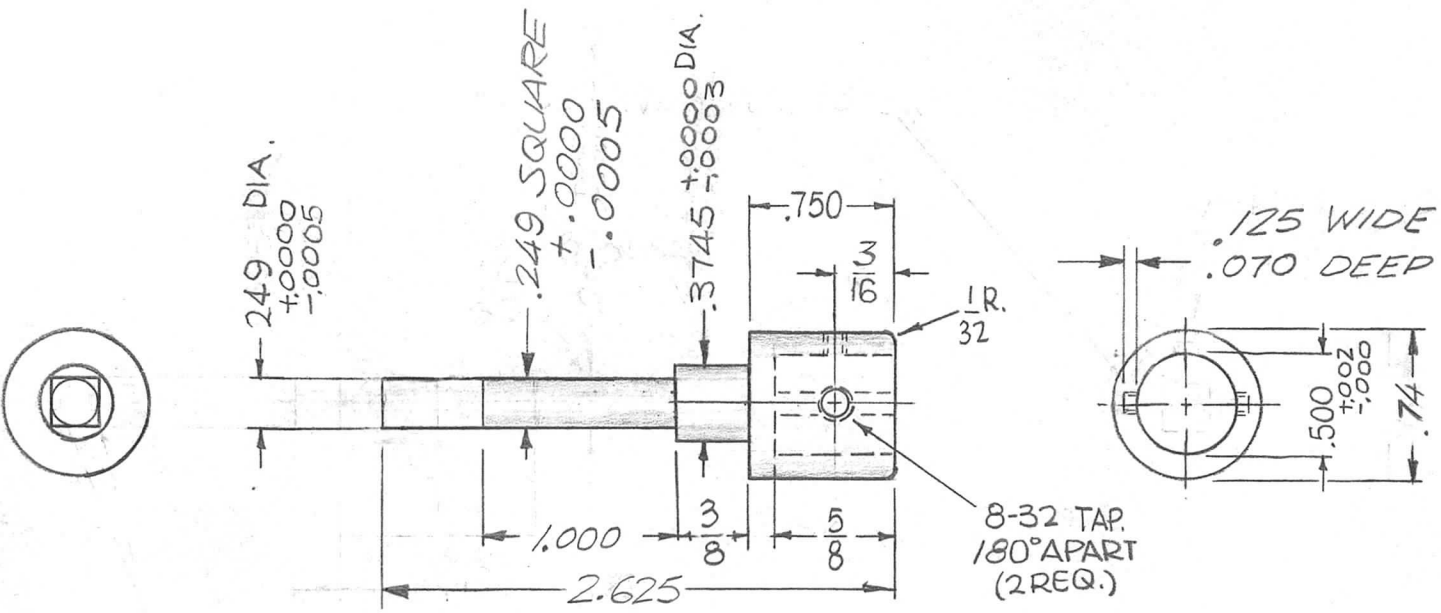


HOLES	DESCRIPTION	REQ.
A	.127 ±.000 DIA. X 1/8 DP.	2
B	DRILL & TAP 8-32 X 1/4 DP.	4



SYM	DESCRIPTION	DATE	CH. NO.	DRAFTS	CHECKER	ENG. APP.	REQ. ITEM	PART NO.	F. BUDETTI DESCRIPTION	SYMBOL			
Ø	ORIGINAL RELEASE FOR PRODUCTION	5/20/66	Ø	CV			3/8 THICK STOCK SIZE		THE TECHNICAL MATERIEL CORP. MAMARONECK. NEW YORK				
X	EXP. RELEASE	12-9-64	X	SRG			ALUMINUM		SUPPORT, MTG, CAP.				
							MATERIAL						
UNLESS OTHERWISE SPECIFIED DIMENSIONS ARE IN INCHES AND INCLUDE CHEMICALLY APPLIED OR PLATED FINISHES							SCALE		2024-T4				
							1/2 : 1		SRG				
							TYPE & TEMPER		DRAWN		CHECKED		
							HEAT TREAT. SPEC.		2024-T4		SRG		
							FINISH & SPEC. NO.		ELEC. DES. APP.		MECH. DES. APP.		
DECIMALS .X ± .05 .XX ± .01 .XXX ± .005							TOLERANCES						
FRACTIONS ± 1/64 ANGLES ± 0° 30'							CODE A						
							5245 SILVER PLATE		5423 SILVER KOTE		PM1194 Ø		

REQ. PER UNIT	USED ON			PM1196	B
	MODEL	ASS'Y. NO.	DATE		
1	RFTA-1		12-22-64		



NOTE:
 1-ROUND ALL EDGES 1/64 R.
 2-DIM'S APPLY AFTER SILVER PLATING.
 3-SHAFT TO TRACK WITHIN .003" OF TRUE.

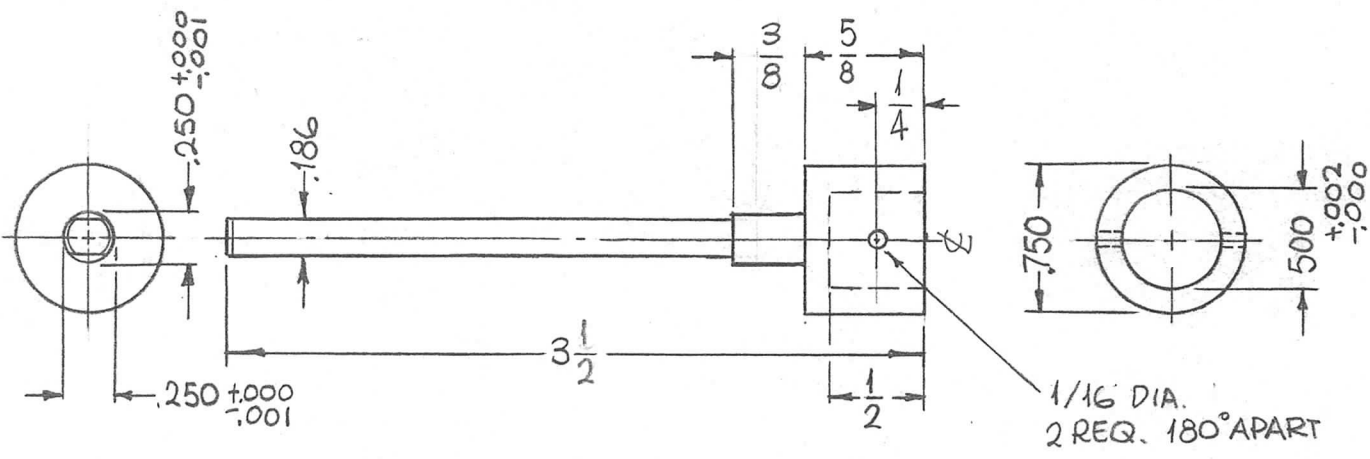
B	REV. & UPDATED	6/3/70	1987H	KH	FB	SRG
A	REVISED & UPDATED	7/1/69	1950Z	GE	FB	SRG
Ø	ORIGINAL RELEASE FOR PRODUCTION	6.23.66	#	WH	FB	SRG
X3	COMPLETELY REVISED	7-27-65	X3	SRG		
X2	375 WAS 3/8, 250 ROUND WAS SQ.	6-21-65	X2	SRG		
X1	DIM. 2.625 WAS 2.375	3.10.65	X1	SRG		
X	EXP. RELEASE	12-22-64	X	SRG		

SYM	DESCRIPTION	DATE	CH. NO.	DRAFTS	CHECKER	ENG. APP.
UNLESS OTHERWISE SPECIFIED DIMENSIONS ARE IN INCHES AND INCLUDE CHEMICALLY APPLIED OR PLATED FINISHES		SCALE 1:1				
DECIMALS .X ± .05 .XX ± .01 .XXX ± .005	TOLERANCES	FRACTIONS ± 1/64 ANGLES ± 0° 30'	CODE A			

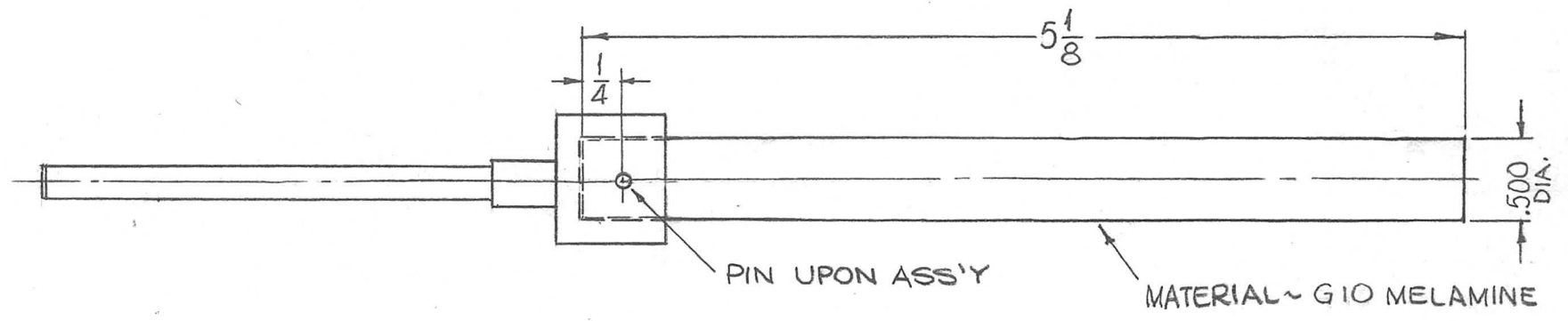
REQ. ITEM	PART NO.	QTY	DESCRIPTION	SYMBOL
	AS NOTED		THE TECHNICAL MATERIEL CORP.	
	STOCK SIZE		MAMARONECK. NEW YORK	
	BRASS		HUB, BANDSWITCH	
MATERIAL				
HALF HARD		SRG	SRG	
TYPE & TEMPER	HEAT TREAT. SPEC.	DRAWN	CHECKED	FINAL APPROVAL
S245 SILVER PLATE		SRG	SRG	
S423 IRIDITE 18P SILVER KOTE		SRG	SRG	
FINISH & SPEC. NO.	ELEC. DES. APP.	MECH. DES. APP.		

PM1196 B

REQ. PER UNIT	USED ON			PM1197	Ø
	MODEL	ASS'Y. NO.	DATE		
1	RFTA-1		1-22-65		



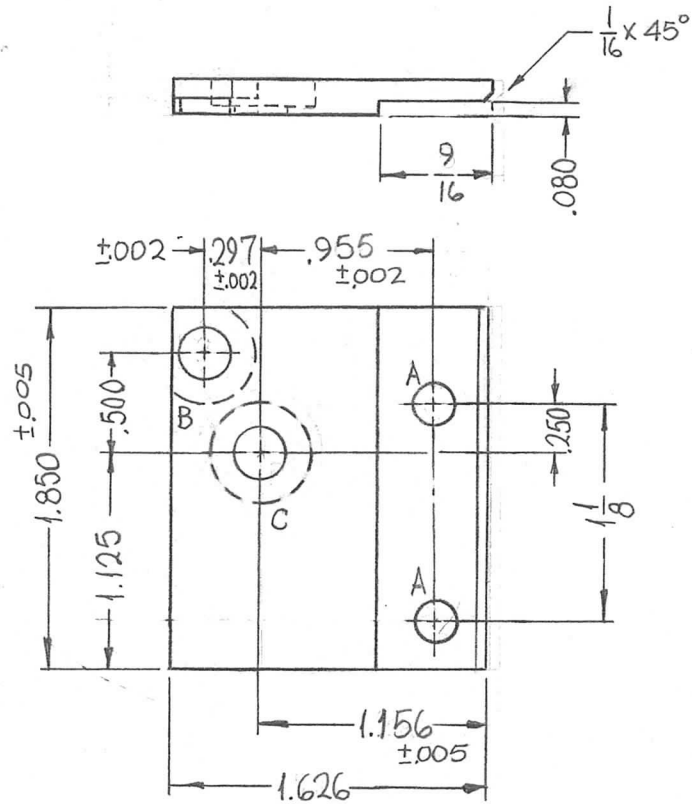
#303
MATERIAL ~ STAINLESS STEEL
FINISH ~ SiO4 PASSIVATE
NOTE ~ ROUND ALL EDGES
1/64 R.



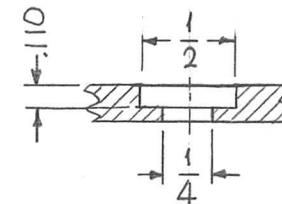
Ø	ORIGINAL RELEASE FOR PRODUCTION	6.23.66	-11	WHD		<i>[Signature]</i>
X3	MAT'L WAS BRASS, FINISH WAS S24S	6-9-65	X3	SRG		<i>[Signature]</i>
X2	3 1/2 WAS 3 5/8	5-17-65	X2	SRG		<i>[Signature]</i>
X1						
X	EXP. RELEASE	1-22-65	X	SRG		
SYM	DESCRIPTION	DATE	CH. NO.	DRAFTS	CHECKER	ENG. APP.
UNLESS OTHERWISE SPECIFIED DIMENSIONS ARE IN INCHES AND INCLUDE CHEMICALLY APPLIED OR PLATED FINISHES		SCALE 1:1				
DECIMALS .X ± .05 .XX ± .01 .XXX ± .005	TOLERANCES	FRACTIONS ± 1/64 ANGLES ± 0° 30'	CODE A			

REQ. ITEM	PART NO.	F. BUDETTI	DESCRIPTION	SYMBOL
			THE TECHNICAL MATERIEL CORP. MAMARONECK, NEW YORK	
			HUB & SHAFT, BANDSWITCH	
			MATERIAL	
		SRG	<i>[Signature]</i>	<i>[Signature]</i>
		TYPE & TEMPER	HEAT TREAT. SPEC.	FINAL APPROVAL
		FINISH & SPEC. NO.	ELEC. DES. APP.	MECH. DES. APP.
				PM1197 Ø

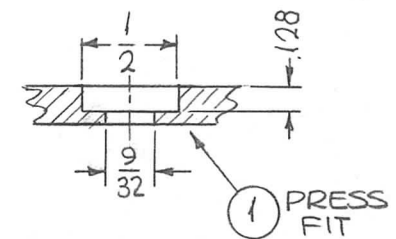
REQ. PER UNIT	USED ON			PM1198	Ø
	MODEL	ASS'Y. NO.	DATE		
1	RFTA-1		1-12-64		



HOLES	DESCRIPTION	REQ.
A	13/64 DIA.	2
B	SEE DETAIL	1
C	SEE DETAIL	1



B-DETAIL



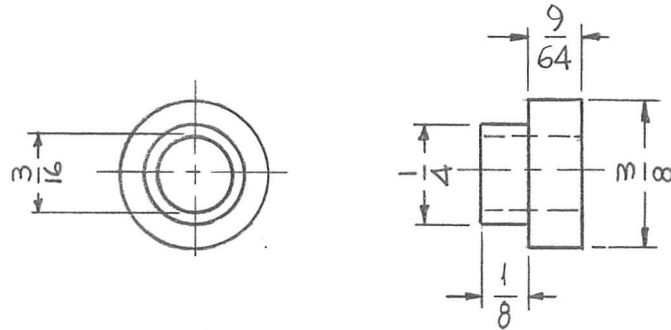
C-DETAIL

REF. LD 1765

Ø	ORIGINAL RELEASE FOR PRODUCTION	6.7.66	#	LHW			1	1	BB 126-15	BEARING RACE	C		
X1	297 WAS 292, 955 WA 906 1.156 WAS 1.240, 1.626 WAS 1.710	2-4-65	X1	SRG					REQ. ITEM	PART NO.	F. BUDETTI DESCRIPTION	SYMBOL	
X	EXP. RELEASE								3/16 THICK		THE TECHNICAL MATERIEL CORP. MAMARONECK. NEW YORK		
									STOCK SIZE		PLATE, SWITCH. MTG.		
									ALUMINUM				
									MATERIAL				
UNLESS OTHERWISE SPECIFIED DIMENSIONS ARE IN INCHES AND INCLUDE CHEMICALLY APPLIED OR PLATED FINISHES		SCALE		2024-T3		SRG		QCB		QCB		FINAL APPROVAL	
		1:1		TYPE & TEMPER		HEAT TREAT. SPEC.		DRAWN		CHECKED		FINAL APPROVAL	
DECIMALS .X ± .05 .XX ± .01 .XXX ± .005		FRACTIONS ± 1/64 ANGLES ± 0° 30'		CODE		S404 YEL. IRIDITE		R/B		MECH. DES. APP.		PM1198	
TOLERANCES		A		FINISH & SPEC. NO.		ELEC. DES. APP.						Ø	

REQ. PER UNIT	USED ON		
	MODEL	ASS'Y. NO.	DATE
18	RFTA-1		12-14-64
63	AF105		7-21-65

PM1199 \emptyset



NOTE:
ROUND ALL EDGES 1/64 R.

REQ.	ITEM	PART NO.	F. BUDETTI DESCRIPTION				SYMBOL
		AS NOTED	THE TECHNICAL MATERIEL CORP.				
		STOCK SIZE	MAMARONECK. NEW YORK				
X ₁	LPFS-1, 63 REQ. ADDED	7-21-65	X ₁	SRG			
X	EXP. RELEASE	12-14-64	X	SRG			
		BRASS	SPACER, CONTACT				
		MATERIAL					
		HALF HARD	SRG	QC/B	O/B	SRG	
		TYPE & TEMPER	HEAT TREAT. SPEC.	DRAWN	CHECKED	FINAL APPROVAL	
		S245 SILVER PLATE					
		S423 SILVER KOTE					
		FINISH & SPEC. NO.	ELEC. DES. APP.	MECH. DES. APP.			
						PM1199	\emptyset
UNLESS OTHERWISE SPECIFIED DIMENSIONS ARE IN INCHES AND INCLUDE CHEMICALLY APPLIED OR PLATED FINISHES		SCALE					
		2:1					
DECIMALS	TOLERANCES	FRACTIONS	CODE				
.X ± .05		± 1/64	A				
.XX ± .01		ANGLES					
.XXX ± .005		± 0° 30'					