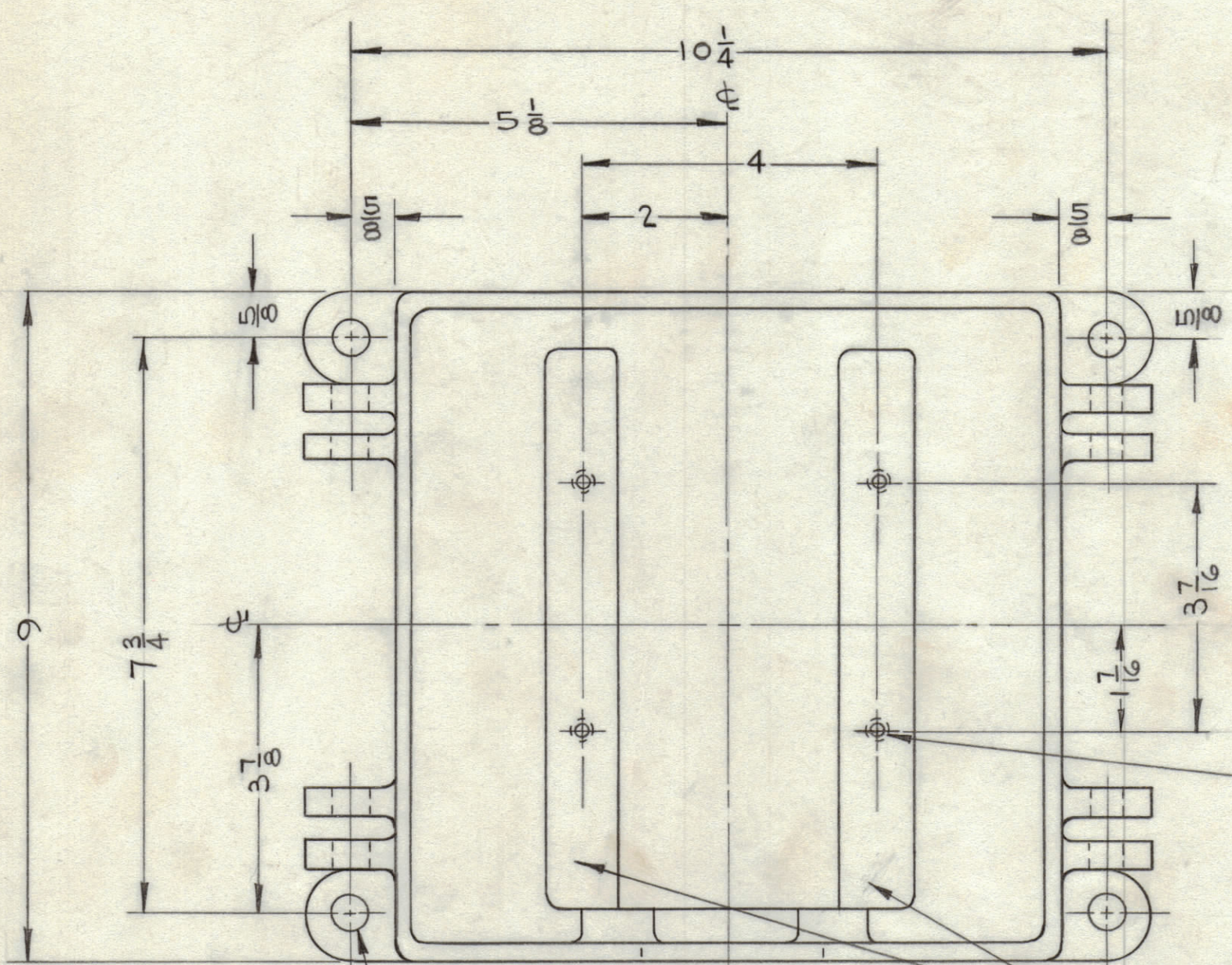


| REVISIONS |     |                                 |          |            |        |           |
|-----------|-----|---------------------------------|----------|------------|--------|-----------|
| ZONE      | SYM | DESCRIPTION                     | DATE     | E.M.N. NO. | DRAFT  | CHKD APPD |
|           | X   | EXPER. RELEASE                  | 12-17-64 | X          | H.L.A. |           |
|           | Ø   | ORIGINAL RELEASE FOR PRODUCTION | 1-6-65   | Ø          | R.L.   |           |
|           | A   | SHEET 1 OBSOLETE, SHEET 2 ADD.  | 7-2-91   |            | G.D.L. |           |



OBSOLETE -  
SEE SHEET 2  
- OBSOLETE -  
SEE SHEET 2  
(USE ES 120)

8-32 BLIND TAP, 3/8 DEEP  
4 REQ'D.

NOTE:  
MASK RIBS BEFORE PAINTING

33 (.515) D. ANCHOR HOLES  
64 4 REQ'D.

33 (.515) D. COVER HINGE HOLES  
64 4 REQ'D.

1/8-27 PIPE TAP  
1 HOLE

33 (.515) D. COVER BOLT HOLES  
64 4 REQ'D.

Top SURFACE MACHINED SMOOTH

10-32 TAP, 5/16 DEEP  
1 REQ'D.

1/4-20 BLIND  
TAP, 5/16 DEEP  
4 REQ'D.

NOTE:  
THIS SURFACE TO BE  
SQUARE WITH BASE  
LINE.

C-BORE 1 5/16 D. .062 DEEP  
2 REQ'D.  
Ø.015 (.625) D. HOLE - 2 REQ'D.

6-32 TAP, 3/16 DEEP  
1 REQ'D.

2.500 ±.010 D. HOLE

REF: CASTING DWG. CS-101

| REQ'D.                        | ITEM | PART NUMBER                  | DESCRIPTION | SYMBOL |
|-------------------------------|------|------------------------------|-------------|--------|
| LIST OF MATERIAL              |      |                              |             |        |
| MATERIAL                      |      | THE TECHNICAL MATERIEL CORP. |             |        |
| ALUMINUM                      |      | MAMARONECK, NEW YORK         |             |        |
| TYPE 35G-TG                   |      | TITLE                        |             |        |
| FINISH S 404 - YELLOW IRIDITE |      | CASE, MACHINING              |             |        |
| S-114 ZINC CHROMATE PRIMER    |      | DRAWN                        |             |        |
| S-115 SMOOTH GREY ENAMEL      |      | H. AUSTIN                    |             |        |
|                               |      | DATE                         |             |        |
|                               |      | 12-17-64                     |             |        |
|                               |      | CHECKED                      |             |        |
|                               |      | DATE                         |             |        |
|                               |      | 1-3-65                       |             |        |
|                               |      | ELECT. DES.                  |             |        |
|                               |      | DATE                         |             |        |
|                               |      | 11-16-65                     |             |        |
|                               |      | MECH. DES.                   |             |        |
|                               |      | DATE                         |             |        |
|                               |      | 11-16-65                     |             |        |
|                               |      | SHEET 1 OF 2                 |             |        |
|                               |      | REV. LTR.                    |             |        |
|                               |      | A                            |             |        |

| Q'TY./UNIT  |  | MODEL USED ON |  | ASS'Y. NO. |  |
|---|--|---------------|--|------------|--|
| SCALE   |  | CODE          |  |            |  |
| DO NOT SCALE  |  |               |  |            |  |
| THE CONTENTS OF THIS DRAWING ARE THE EXCLUSIVE PROPERTY OF THE TECHNICAL MATERIEL CORP. ITS UNAUTHORIZED USE OR REPRODUCTION IN WHOLE OR IN PART IS STRICTLY FORBIDDEN. |  |               |  |            |  |
| DECIMALS  |  | FRACTIONS     |  | ANGLES     |  |
| .X ± .05  |  | ± 1/64        |  | ± 0° 30'   |  |
| .XX ± .01   |  |               |  |            |  |
| .XXX ± .005   |  |               |  |            |  |

NOTES

PM-1158  
A