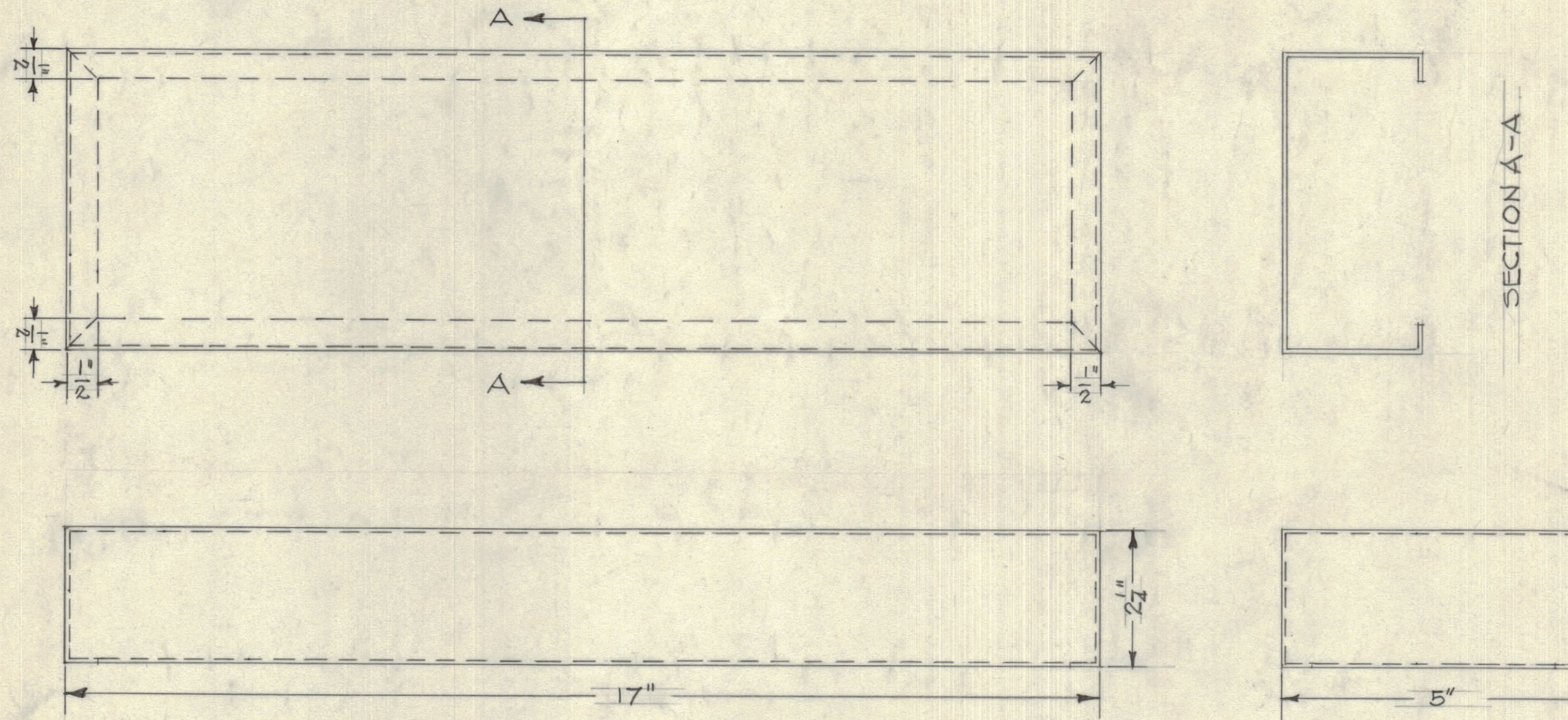


**NOTICE TO PERSONS RECEIVING THIS DRAWING**

THE TECHNICAL MATERIEL CORPORATION claims proprietary right in the material disclosed hereon. This drawing is issued in confidence for engineering information only and may not be reproduced or used to manufacture anything shown hereon without permission from THE TECHNICAL MATERIEL CORPORATION to the user. This drawing is loaned for mutual assistance and is subject to recall at any time.

Property of:  
THE TECHNICAL MATERIEL CORPORATION  
MAMARONECK, NEW YORK

PM-10017



JOINTS TO BE WELDED

.051" SHEET		T.M.C. (Canada) LTD.	
STOCK SIZE		OTTAWA ONTARIO	
ALUMINUM		CHASSIS. AMC-10	
MATERIAL WT PER PC.		R.F. UNIT	
ALCAN 57S-1/2 HARD		DH. 13-1-58	
ALCOA 52S-H34		DRAWN	
TYPE & TEMPER.		ELEC DES. APP	
HEAT TREAT SPEC.		MECH DES APP	
FINISH & SPEC. NO.		CHECKED	
		FINAL APPROVAL	
		PM-10017	

A.M.C.	10002	ASSY No.	DATE
MODEL	PROJECT NO.	DATE	
USED ON:			

SCALE HALF SIZE