

IF IT IS FOUND DESIRABLE TO CHANGE ANY TOLERANCE OR OTHER DETAIL SPECIFIED ON THIS DRAWING NOTIFY THE PURCHASER PROMPTLY.

RELEASED

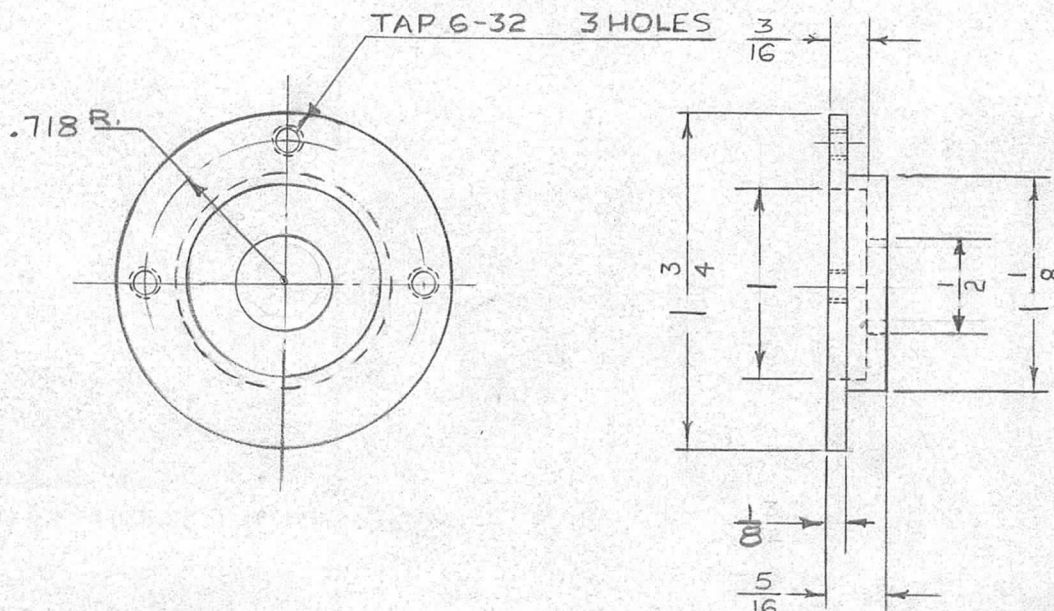
PM-148

A

MAXIMUM ALLOWABLE TOLERANCES HAVE BEEN DETERMINED AND DEVIATIONS WILL BE CAUSE FOR REJECTION. REMOVE ALL BURRS AND SHARP EDGES

USED ON

MODEL	PROJECT NO.	ASS'Y. NO.	DATE
TWR-115	151	A-218	9-13-52



NOTE:
 1. S-101 (CAUSTIC DIP)
 2. S-151 (GREY WRINKLE PAINT)

REQ.	ITEM	PART NO.	DESCRIPTION	SYMBOL
	1	3/4 DIA.	THE TECHNICAL MATERIEL CORP. MAMARONECK. NEW YORK	
		STOCK SIZE		
		ALUMINUM	GEAR SHAFT FLANGE	
		MATERIAL		
		115-T3		
		TYPE & TEMPER	<i>L. Gabry</i>	
			DRAWN	
			ELEC. DES. APP.	<i>PMB</i>
			MECH. DES. APP.	<i>[Signature]</i>
		HEAT TREAT. SPEC.	<i>MDc 11/6/52</i>	
		FINISH & SPEC. NO.	CHECKED	
		SEE NOTE		
			FINAL APPROVAL	
				PM-148 A

ISSUE	ITEM	CHANGED FROM	DATE	CN. NO.	DRAFTS	CHECKER	ENG. APP.
A	1	1/8 WAS 3/32	7/9/53	1			<i>PMB</i>
TOLERANCES			SCALE				
ALL OTHERS	DEC. DIM. ± .005 FRAC. DIM. ± $\frac{1}{64}$ ANGULAR DIM. ±		DRILL, PUNCH, COMMERCIAL STOCK SIZES AND MANUFACTURERS TOLERANCES ARE NOT INCLUDED.				

IF IT IS FOUND DESIRABLE TO CHANGE ANY TOLERANCE OR OTHER DETAIL SPECIFIED ON THIS DRAWING NOTIFY THE PURCHASER PROMPTLY.

PM-148

MAXIMUM ALLOWABLE TOLERANCES HAVE BEEN DETERMINED AND DEVIATIONS WILL BE CAUSE FOR REJECTION. REMOVE ALL BURRS AND SHARP EDGES

TWR/15

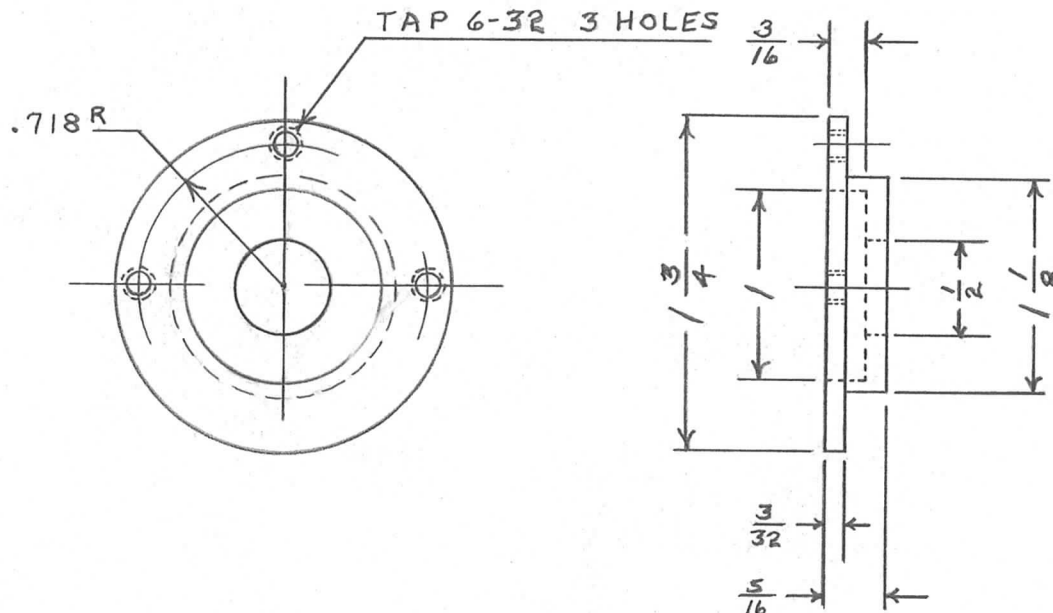
USED ON

MODEL

PROJECT NO.

ASS'Y. NO.

DATE



NOTE:

1. S-101 (CAUSTIC DIP)
2. S-151 (GREY WRINKLE PAINT)

REQ.	ITEM	PART NO.	DESCRIPTION	SYMBOL
		1 3/4 DIA.	TMC (Canada) LIMITED OTTAWA ONTARIO	
		STOCK SIZE		
		ALUMINUM	GEAR SHAFT FLANGE	
		MATERIAL	TAPE WINDING	
		WEIGHT PER PC.		
		11S-T3		
		TYPE & TEMPER	DT 5/5/55	
			DRAWN	ELEC. DES. APP. MECH. DES. APP.
		HEAT TREAT. SPEC.		
		SEE NOTE	CHECKED	FINAL APPROVAL
		FINISH & SPEC. NO.		

ISSUE	ITEM	CHANGED FROM	DATE	CN. NO.	DRAFTS	CHECKER	ENG. APP.
TOLERANCES			SCALE FULL SIZE				
ALL OTHERS	DEC. DIM. ± .005	DRILL, PUNCH, COMMERCIAL STOCK SIZES AND MANUFACTURERS TOLERANCES ARE NOT INCLUDED.					
	FRAC. DIM. ± 1/64						
	ANGULAR DIM. ±						

PM-148