

IF IT IS FOUND DESIRABLE TO CHANGE ANY TOLERANCE OR OTHER DETAIL SPECIFIED ON THIS DRAWING NOTIFY THE PURCHASER PROMPTLY.

RELEASED

PM-137

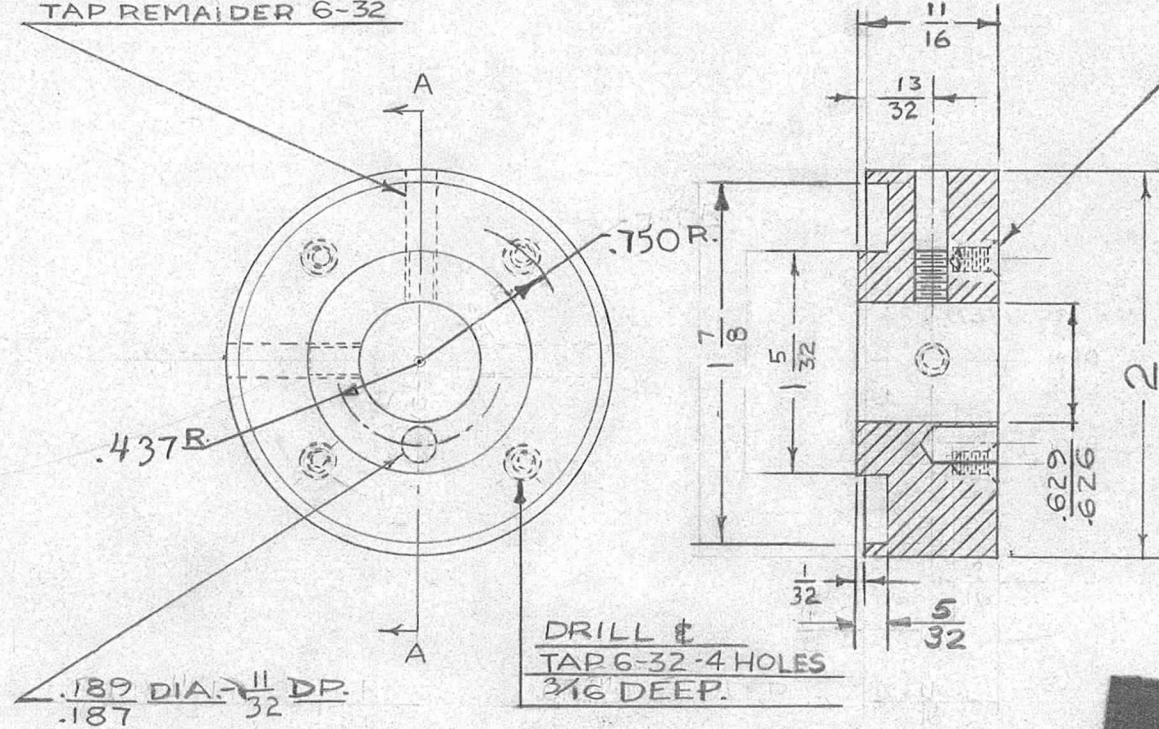
A

MAXIMUM ALLOWABLE TOLERANCES HAVE BEEN DETERMINED AND DEVIATIONS WILL BE CAUSE FOR REJECTION. REMOVE ALL BURRS AND SHARP EDGES

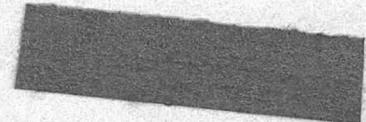
USED ON

MODEL	PROJECT NO.	ASS'Y. NO.	DATE
TWR-115	151	A-213	9-19-52

#27 DR. 2 HOLES $\frac{7}{16}$ DEEP
TAP REMAINDER 6-32



DRILL #
TAP 6-32 - 4 HOLES
 $\frac{3}{16}$ DEEP.



REQ.	ITEM	PART NO.	DESCRIPTION	SYMBOL
		—//—	THE TECHNICAL MATERIEL CORP. MAMARONECK, NEW YORK	
		STOCK SIZE		
		ALUMINUM —//—	TAPE PULLEY	
		MATERIAL		
		WEIGHT PER PC.		
		—//—		
		TYPE & TEMPER		
		—//—		
		HEAT TREAT. SPEC.		
		CAUSTIC DIP S-101		
		FINISH & SPEC. NO.		

ISSUE	ITEM	CHANGED FROM	DATE	CN. NO.	DRAFTS	CHECKER	ENG. APP.
A	1	5/32 WAS 1/8	7-9-53	1			<i>PMS</i>

TOLERANCES		SCALE FULL SIZE
ALL OTHERS	DEC. DIM. ± .005 FRAC. DIM. ± $\frac{1}{64}$ ANGULAR DIM. ±	DRILL, PUNCH, COMMERCIAL STOCK SIZES AND MANUFACTURERS TOLERANCES ARE NOT INCLUDED.

<i>L. Gabel</i>		
DRAWN	ELEC. DES. APP.	MECH. DES. APP.
<i>W.D.</i> 11/6/52		
CHECKED	FINAL APPROVAL	
	PM-137	A

IF IT IS FOUND DESIRABLE TO CHANGE ANY TOLERANCE OR OTHER DETAIL SPECIFIED ON THIS DRAWING NOTIFY THE PURCHASER PROMPTLY.

PM-137

MAXIMUM ALLOWABLE TOLERANCES HAVE BEEN DETERMINED AND DEVIATIONS WILL BE CAUSE FOR REJECTION. REMOVE ALL BURRS AND SHARP EDGES

TWR-115

USED ON

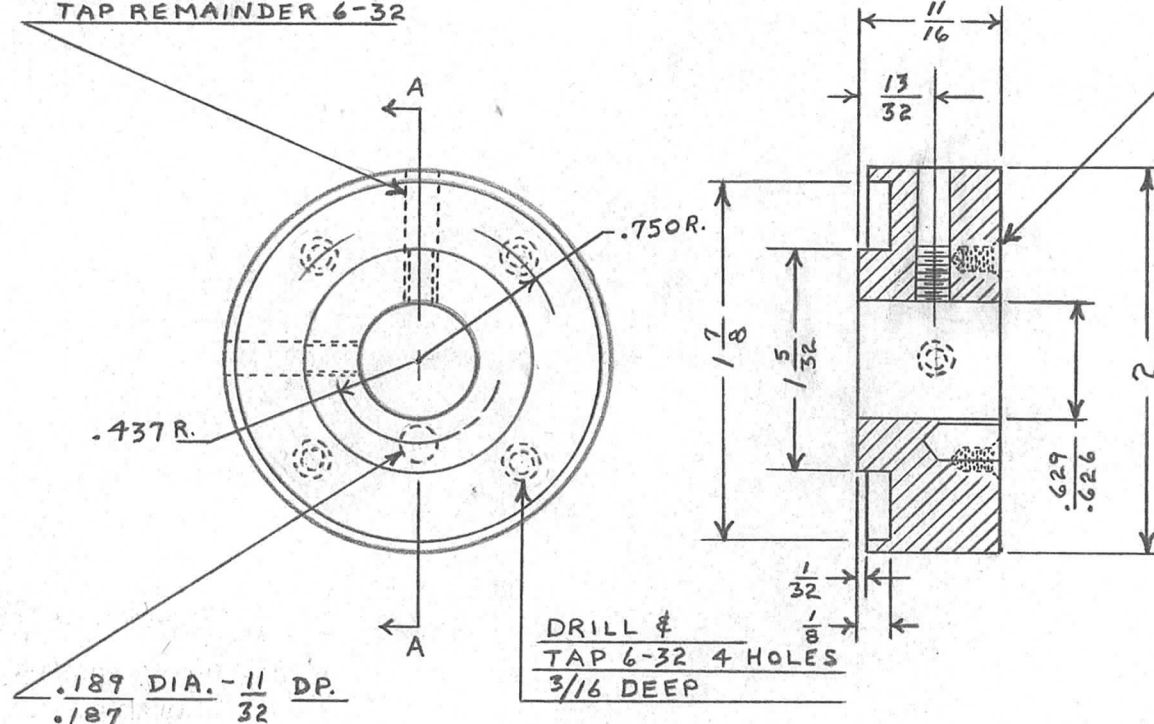
MODEL

PROJECT NO.

ASS'Y. NO.

DATE

#27 DR. 2 HOLES $\frac{7}{16}$ DEEP
TAP REMAINDER 6-32



DRILL ϕ
TAP 6-32 4 HOLES
 $\frac{3}{16}$ DEEP

REQ.	ITEM	PART NO.	DESCRIPTION	SYMBOL
	#		TMC (Canada) LIMITED OTTAWA ONTARIO	
		STOCK SIZE	TAPE PULLEY	
	ALUMINUM	#	TAPE WINDING	
		MATERIAL WEIGHT PER PC.	BA 5/5/55	
		TYPE & TEMPER	DRAWN	ELEC. DES. APP. MECH. DES. APP.
		HEAT TREAT. SPEC.	CHECKED	FINAL APPROVAL
		CAUSTIC DIP S-101		PM-137
		FINISH & SPEC. NO.		

ISSUE ITEM CHANGED FROM DATE CN. NO. DRAFTS CHECKER ENG. APP.

TOLERANCES

SCALE FULL SIZE

DRILL, PUNCH, COMMERCIAL STOCK SIZES AND MANUFACTURERS TOLERANCES ARE NOT INCLUDED.

ALL OTHERS

DEC. DIM. $\pm .005$
FRAC. DIM. $\pm \frac{1}{64}$
ANGULAR DIM. \pm