

IF IT IS FOUND DESIRABLE TO CHANGE ANY TOLERANCE OR OTHER DETAIL SPECIFIED ON THIS DRAWING NOTIFY THE PURCHASER PROMPTLY.

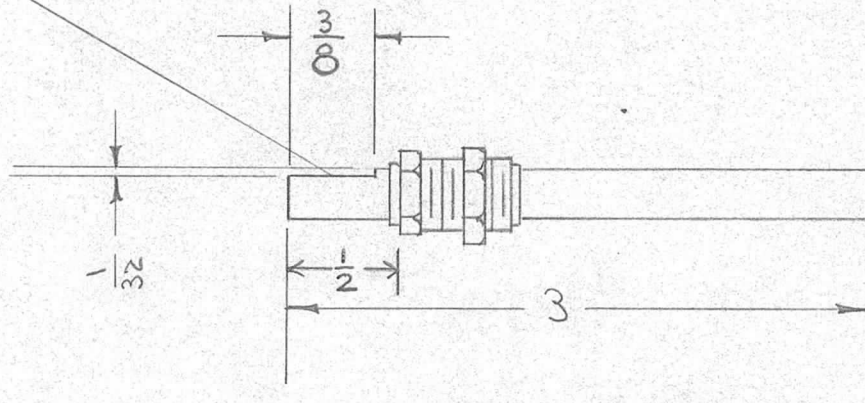
MAXIMUM ALLOWABLE TOLERANCES HAVE BEEN DETERMINED AND DEVIATIONS WILL BE CAUSE FOR REJECTION. REMOVE ALL BURRS AND SHARP EDGES

PM-121 A

USED ON

MODEL	PROJECT NO.	ASS'Y. NO.	DATE
DMK-4	140	A-167	9-24-52

FLAT  $\frac{1}{32}$  DEEP



MODIFY PM-234-1 AS SHOWN

REQ.	ITEM	PART NO.	DESCRIPTION	SYMBOL
			<b>THE TECHNICAL MATERIEL CORP.</b> MAMARONECK, NEW YORK	
		STOCK SIZE	SHAFT,	
		MATERIAL	SWITCH LINKAGE	
		WEIGHT PER PC.		
		TYPE & TEMPER	C.I.D. 9-24-52	
		HEAT TREAT. SPEC.	DRAWN <i>H.F.C.</i>	
		FINISH & SPEC. NO.	CHECKED <i>[Signature]</i>	
			FINAL APPROVAL	
			PM-121 A	

ISSUE	ITEM	CHANGED FROM	DATE	CN. NO.	DRAFTS	CHECKER	ENG. APP.
A	1	WAS "FLAT $\frac{1}{32}$ DEEP X $\frac{1}{16}$ "	11/53	1	16	JAW	[Signature]

TOLERANCES		SCALE
ALL OTHERS	DEC. DIM. $\pm$ FRAC. DIM. $\pm$ ANGULAR DIM. $\pm$	DRILL, PUNCH, COMMERCIAL STOCK SIZES AND MANUFACTURERS TOLERANCES ARE NOT INCLUDED.