

IF IT IS FOUND DESIRABLE TO CHANGE ANY TOLERANCE OR OTHER DETAIL SPECIFIED ON THIS DRAWING NOTIFY THE PURCHASER PROMPTLY.

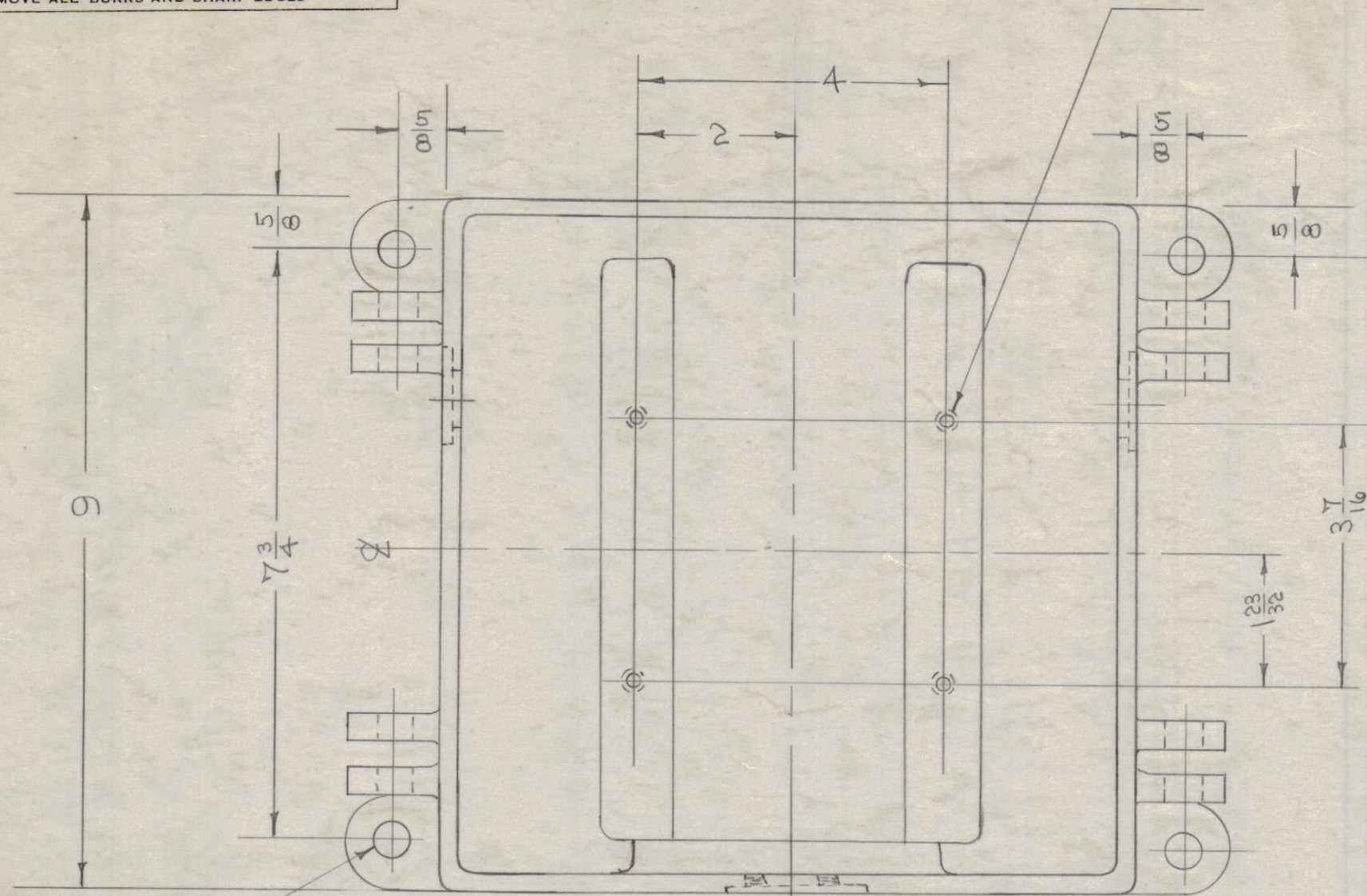
MAXIMUM ALLOWABLE TOLERANCES HAVE BEEN DETERMINED AND DEVIATIONS WILL BE CAUSE FOR REJECTION. REMOVE ALL BURRS AND SHARP EDGES

8-32 BLIND TAP 3/8 DEEP
4 HOLES REQ.

NOTICE TO PERSONS RECEIVING THIS DRAWING

THE TECHNICAL MATERIEL CORPORATION claims proprietary right in the material disclosed hereon. This drawing is issued in confidence for engineering information only and may not be reproduced or used to manufacture anything shown hereon without permission from THE TECHNICAL MATERIEL CORPORATION to the user. This drawing is loaned for mutual assistance and is subject to recall at any time.

Property of:
THE TECHNICAL MATERIEL CORPORATION
MAMARONECK, NEW YORK



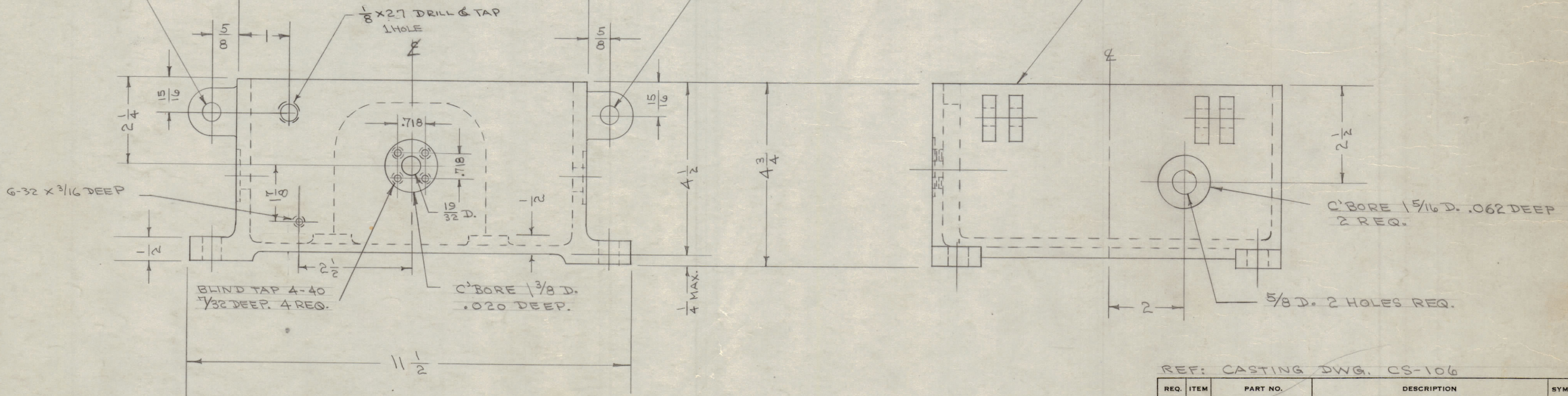
ANCHOR HOLES 33/64 D.
4 HOLES REQ.

COVER HINGE HOLES 33/64 D.
4 HOLES REQ.

COVER BOLT HOLES 33/64 D.
4 HOLES REQ.

TOP SURFACE MACHINED SMOOTH

PM-109 D



| ISSUE | ITEM | CHANGED FROM | DATE | CN. NO. | DRAFTS | CHECKER | ENG. APP. |
|-------|------|--|---------|---------|--------|---------|-----------|
| D | 1 | S-404 YEL. IRIDITE WAS S-101 CAUSTIC DIP | 12/1/59 | 1001 | JAG | WJC | EMN |
| C | 3 | 1/8 x 27 TAP WAS 3/8 x 16 | 11/1/56 | 3 | WJC | WJC | AMB |
| B | 2 | 6-32 x 3/16 PP. HOLE ADDED | 6/1/56 | 2 | WJC | WJC | AMB |
| A | 1 | 3/8 x 16 TAP ADDED | 10/2/54 | 1 | WJC | WJC | AMB |
| - | - | .062 WAS .031 | 10/2/54 | 1 | WJC | WJC | AMB |
| - | - | REDRAWN NO CHANGE | 4/22/55 | - | WJC | WJC | AMB |

TOLERANCES
DEC. DIM. ± .005
FRAC. DIM. ± 1/64
ANGULAR DIM. ±

SCALE: #

DRILL, PUNCH, COMMERCIAL STOCK SIZES AND MANUFACTURERS TOLERANCES ARE NOT INCLUDED.

NOTE: FINISH
S-404 - YELLOW IRIDITE
S-114 ZINC CHROMATE PRIMER
S-115 SMOOTH GREY ENAMEL.

REF: CASTING DWG. CS-106

| REQ. | ITEM | PART NO. | DESCRIPTION | SYMBOL |
|--|------|-----------------|-------------|--------|
| THE TECHNICAL MATERIEL CORP. MAMARONECK, NEW YORK | | | | |
| STOCK SIZE | | ALUMINUM - # | | |
| MATERIAL | | 356 - T6 | | |
| WEIGHT PER PC. | | C.D.D. 4-10-53 | | |
| TYPE & TEMPER | | DRAWN | | |
| STRESS RELIEVED | | ELEC. DES. APP. | | |
| HEAT TREAT. SPEC. | | MECH. DES. APP. | | |
| SEE NOTE | | CHECKED | | |
| FINISH & SPEC. NO. | | FINAL APPROVAL | | |

PM-109 D

| MODEL | PROJECT NO. | ASS'Y. NO. | DATE |
|------------|-------------|------------|---------|
| BAC-1-S-20 | 108 | A-106 | 7-10-52 |

USED ON