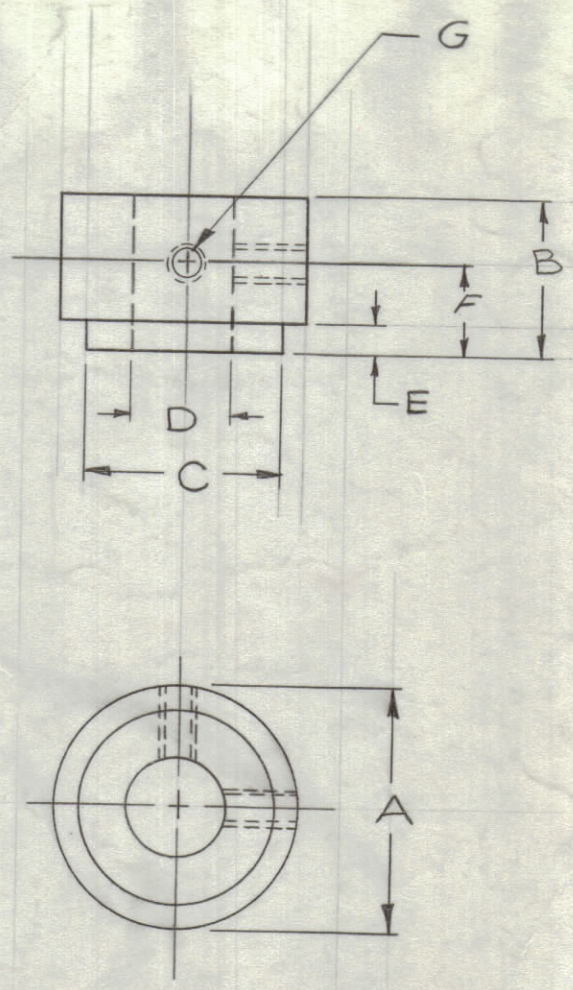
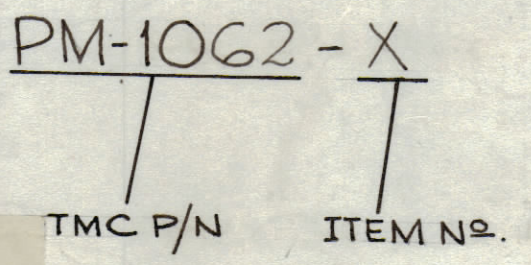


TMC PART NO.	A O.D.	B LGTH	C	D I.D.	E	F	G
PM-1062-1	.218	.250	.125	.0937 ^{+0.0005} _{-0.0000}	.031	.125	4-40
-2	.375	.250	.250	.1875 ^{+0.0005} _{-0.0000}	.031	.125	6-32
-3	.375	.187	.312	.250 ^{+0.0005} _{-0.0000}	.031	.093	4-40
-4	.375	.156	.312	.250 ^{+0.0005} _{-0.0000}	.031	X	X
-5	.375	.250	.312	.250 ^{+0.0005} _{-0.0000}	.031	.125	4-40
-6	.375	.218	.250	.1875 ^{+0.0005} _{-0.0000}	.031	.125	4-40
-7	.375	.140	.312	.250 ^{+0.0005} _{-0.0000}	.031	X	X
-8	.500	.218	.312	.250 ^{+0.0005} _{-0.0000}	.046	.125	6-32
-9	.375	.250	.250	.1875 ^{+0.0005} _{-0.0000}	.046	.140	4-40

REVISIONS							
ZONE	SYM	DESCRIPTION	DATE	E.M.N. NO.	DRAFT	CHKD	APPD
X		EXPERIMENTAL RELEASE	4-20-64				
X ₁		PM-1062-5 ADDED TO CHART	8-27-64				
Ø		ORIGINAL RELEASE FOR PRODUCTION	9-14-64				
A		PM-1062-6 ADDED TO CHART	11-24-64	12997			
B		P/N CHART: ON (-1)"D" WAS .0935 ^{+0.0002} ; (-2)"D" WAS .1873 ^{+0.0002} ; (-3)"C" WAS .3125 ^{+0.0000} ; "D" WAS .253 ^{+0.0005} ; (-6)"D" WAS .1873 ^{+0.0002}	2-1-65	13393			
C		PM-1062-7 ADDED TO CHART.	2-18-65	13447			
D		PM-1062-8 & 9 ADDED.	3-15-65	13708			
E		D COL. TOL. WAS +.005, -.000	11/16/64	18616			



TMC PART NO. WILL BE IN THE FOLLOWING FORMS



NOTES

QTY./UNIT	STD	MODEL USED ON	ASS'Y. NO.
#	A		

THE CONTENTS OF THIS DRAWING ARE THE EXCLUSIVE PROPERTY OF THE TECHNICAL MATERIEL CORP. ITS UNAUTHORIZED USE OR REPRODUCTION IN WHOLE OR IN PART IS STRICTLY FORBIDDEN.

REQ'D.	ITEM	PART NUMBER	DESCRIPTION	SYMBOL
T. KRUY	E3112B	LIST OF MATERIAL		
MATERIAL		#303 STAINLESS STEEL	THE TECHNICAL MATERIEL CORP. MAMARONECK, NEW YORK	
FINISH		S104 PASSIVATE	TITLE COLLAR, SHAFT (UNDERCUT)	
UNLESS OTHERWISE SPECIFIED DIMENSIONS ARE IN INCHES AND INCLUDE CHEMICALLY APPLIED OR PLATED FINISHES		DRAWN <i>A. Lewis</i>	DATE 4-20-64	FINAL APPROVAL <i>KAC</i>
DECIMALS .X ± .05 .XX ± .01 .XXX ± .005		CHECKED @	DATE	DATE
FRACTIONS ± 1/64 ANGLES ± 0° 30'		ELECT. DES.	DATE	DATE
TOLERANCES		MECH. DES.	DATE	DATE
SHEET				REV. LTR.

PM-1062 E