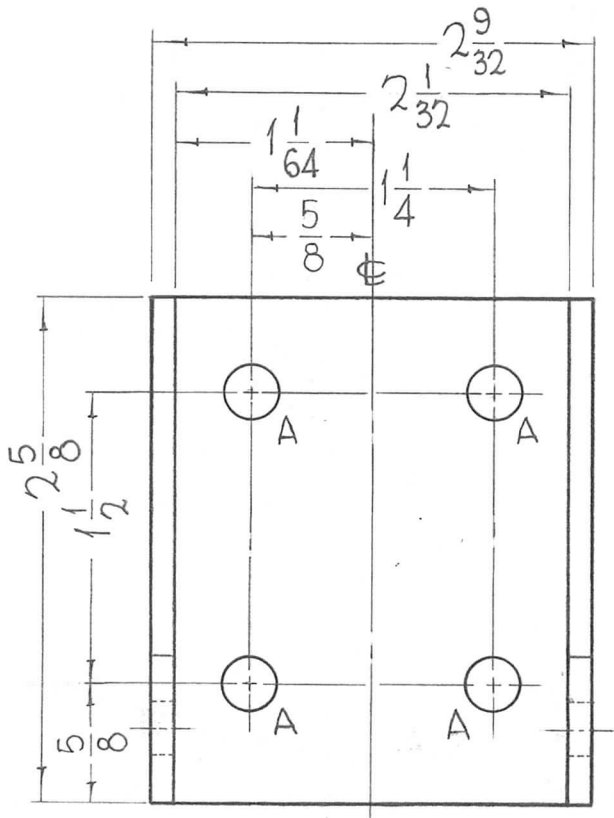


HOLES
A- 9/32 DIA.

REQ.
6

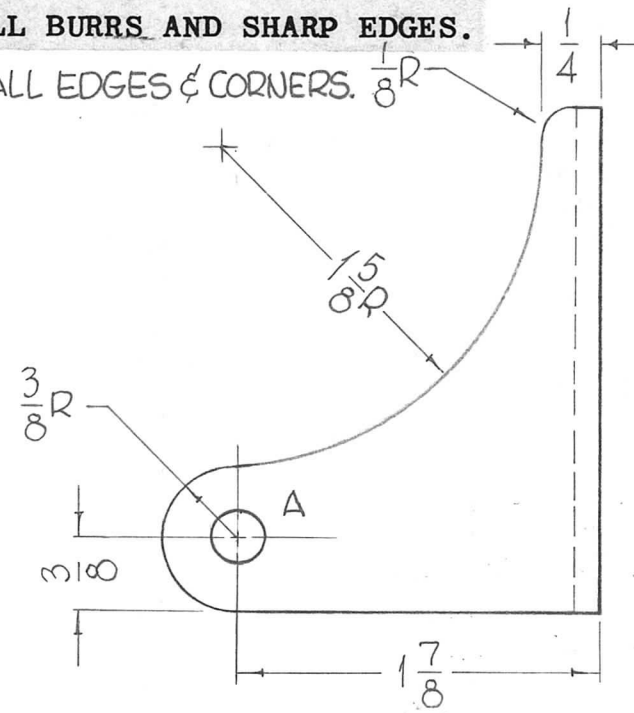
REQ. PER UNIT	USED ON		
	MODEL	ASS'Y. NO.	DATE
1	GPT-200K	AS-123	1-9-64

PM-1009 \emptyset



UNLESS OTHERWISE SPECIFIED:

1. USE MATERIAL THICKNESS FOR MAXIMUM RADIUS ON ALL BENDS.
2. ALL ANGULAR BENDS 90°.
3. REMOVE ALL BURRS AND SHARP EDGES.
4. 1/16 R ON ALL EDGES & CORNERS.



OPPOSITE SIDE SAME

FINISH NOTES

POLISH BEFORE PLATING.
S245- SILVER PLATE BRIGHT.
S423- IRIDITE 18D SILVER-KOTE.

REQ.	ITEM	PART NO.	F. BUDETTI			DESCRIPTION	SYMBOL
		1/8 THICK	THE TECHNICAL MATERIEL CORP.				
		STOCK SIZE	MAMARONECK.				
		COPPER	NEW YORK				
			BRACKET, WAFER SUPPORT				
0	ORIGINAL RELEASE	5.16.64	NTB				
SYM	DESCRIPTION	DATE	CH. NO.	DRAFTS	CHECKER	ENG. APP.	
UNLESS OTHERWISE SPECIFIED DIMENSIONS ARE IN INCHES AND INCLUDE CHEMICALLY APPLIED OR PLATED FINISHES		SCALE					
DECIMALS	FRACTIONS	CODE					
.X ± .05	± 1/64						
.XX ± .01	ANGLES						
.XXX ± .005	± 0° 30'						
TOLERANCES							
COLD ROLLED		TYPE & TEMPER		HEAT TREAT. SPEC.		DRAWN	
SEE NOTES						CHECKED	
FINISH & SPEC. NO.		ELEC. DES. APP.		MECH. DES. APP.		FINAL APPROVAL	
						PM-1009 \emptyset	