

IF IT IS FOUND DESIRABLE TO CHANGE ANY TOLERANCE OR OTHER DETAIL SPECIFIED ON THIS DRAWING NOTIFY THE PURCHASER PROMPTLY.

MAXIMUM ALLOWABLE TOLERANCES HAVE BEEN DETERMINED AND DEVIATIONS WILL BE CAUSE FOR REJECTION. REMOVE ALL BURRS AND SHARP EDGES

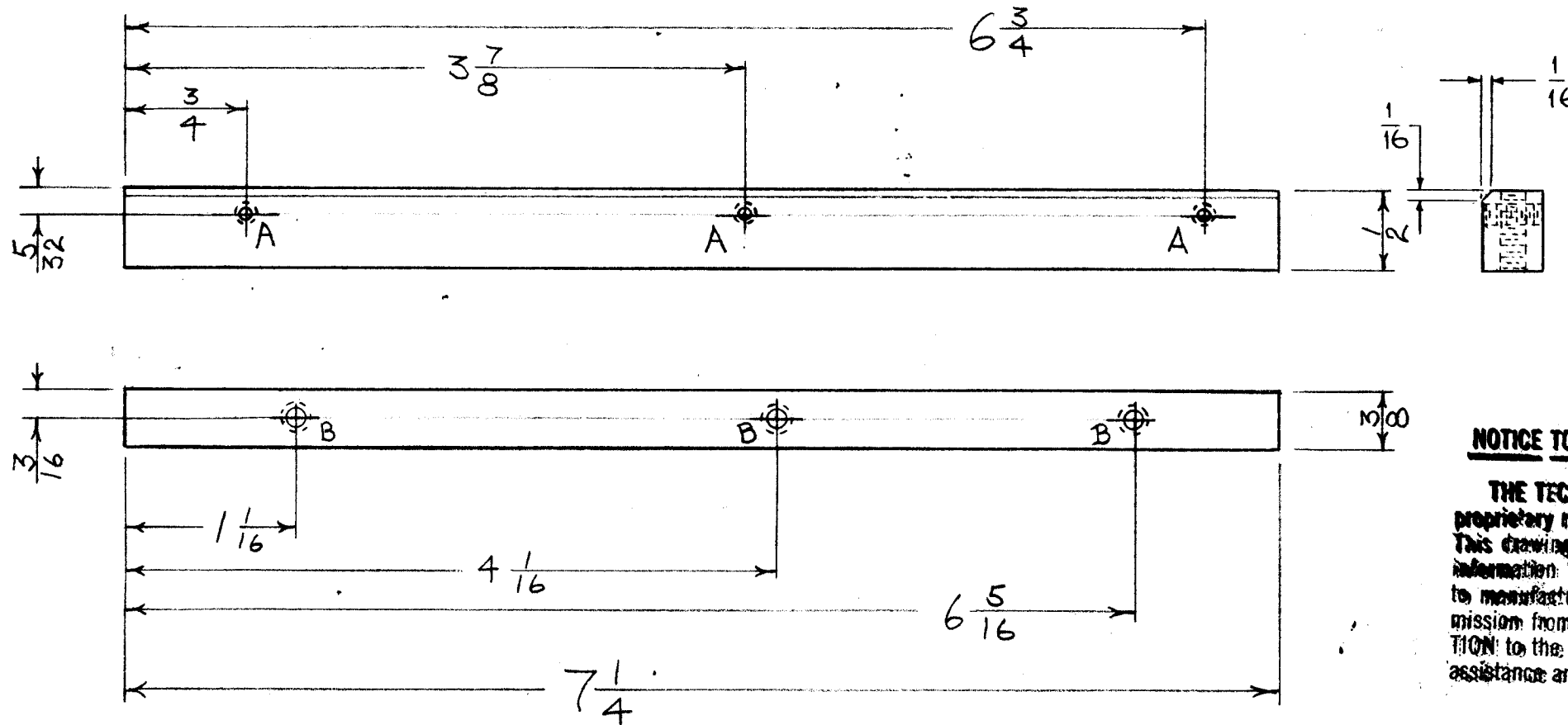
RELEASED

PM-160 C

LEGEND.

A = DRILL & TAP 4-40, 3 REQ

B = DRILL & TAP 6-32, 3 REQ.



NOTICE TO PERSONS RECEIVING THIS DRAWING

THE TECHNICAL MATERIEL CORPORATION claims proprietary right in the material disclosed hereon. This drawing is issued in confidence for engineering information only and may not be reproduced or used to manufacture anything shown hereon without permission from THE TECHNICAL MATERIEL CORPORATION to the user. This drawing is loaned for mutual assistance and is subject to recall at any time.

Property of:
THE TECHNICAL MATERIEL CORPORATION
MAMARONECK, NEW YORK

ISSUE	ITEM	CHANGED FROM	DATE	CN. NO.	DRAFTS	CHECKER	ENG. APP.
C	1	S-404 WAS S-101	12/15/59	1001	AB		EMN
B	1	1/16 X 1/16 notch was 1/8	4/30/59	Z	J.C.B.	PD	AM
A	1	DIM. CHANGED.	3-10-53	1	WDC	PJB	PJB

TOLERANCES		SCALE: FULL
ALL OTHERS	DEC. DIM. ± FRAC. DIM. ± 1/64 ANGULAR DIM. ±	DRILL, PUNCH, COMMERCIAL STOCK SIZES AND MANUFACTURERS TOLERANCES ARE NOT INCLUDED.

FFR	104	A-122	10-14-52
MODEL	PROJECT NO.	ASS'Y. NO.	DATE
USED ON			

REQ.	ITEM	PART NO.	DESCRIPTION	SYMBOL
		3/8 x 1/2 BAR	THE TECHNICAL MATERIEL CORP.	
		ALUM.	MAMARONECK, NEW YORK	
		24S-T4	SIDE BRACE	
		TYPE & TEMPER	WDC 10/14	G.T.O. PJB
		HEAT TREAT. SPEC.	DRAWN 11/19/52	ELEC. DES. APP. MECH. DES. APP.
		FINISH & SPEC. NO.	CHECKED	FINAL APPROVAL
				PM-160 C