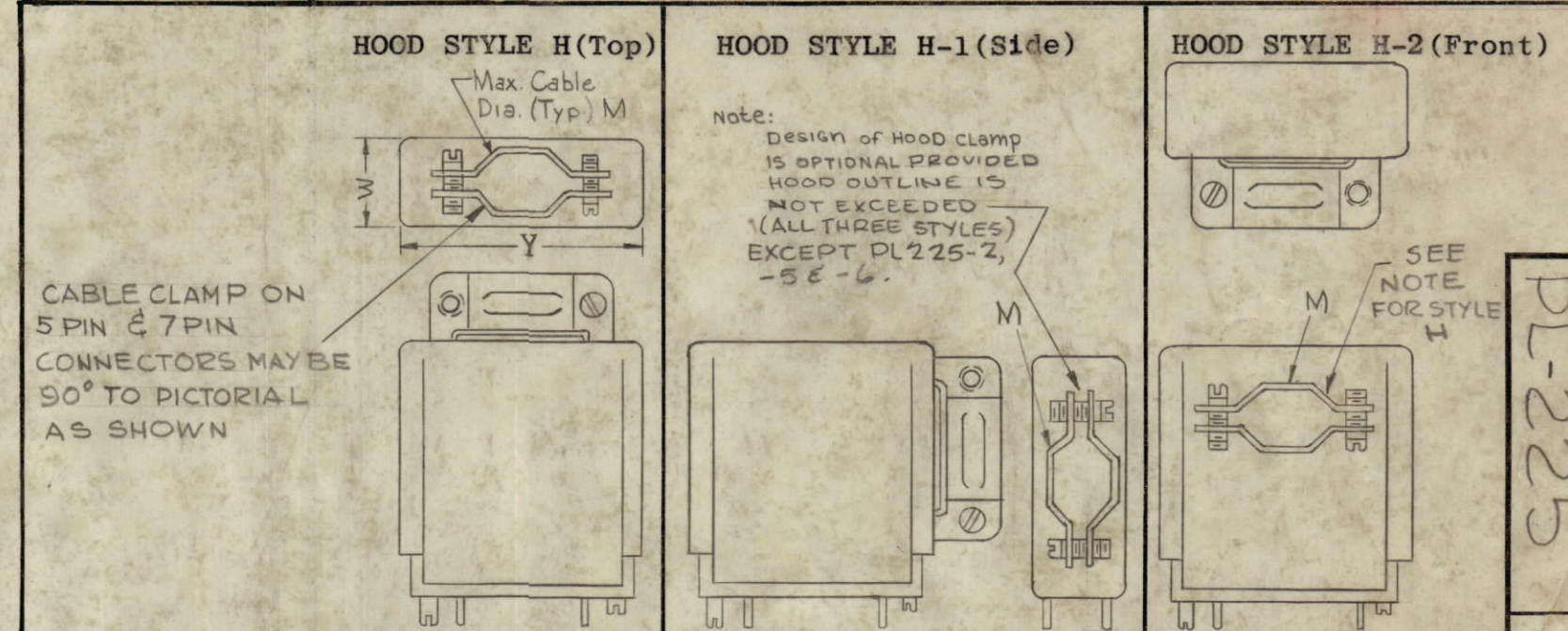
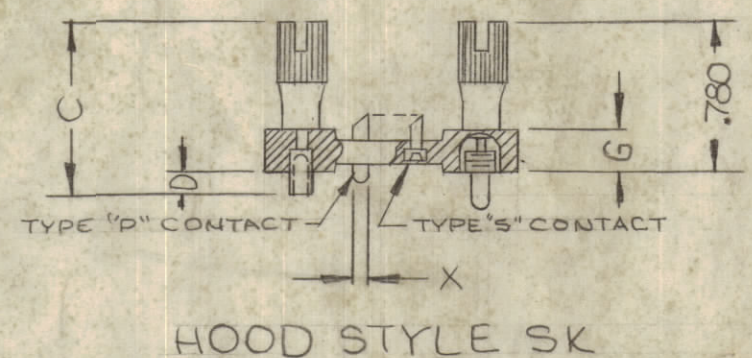
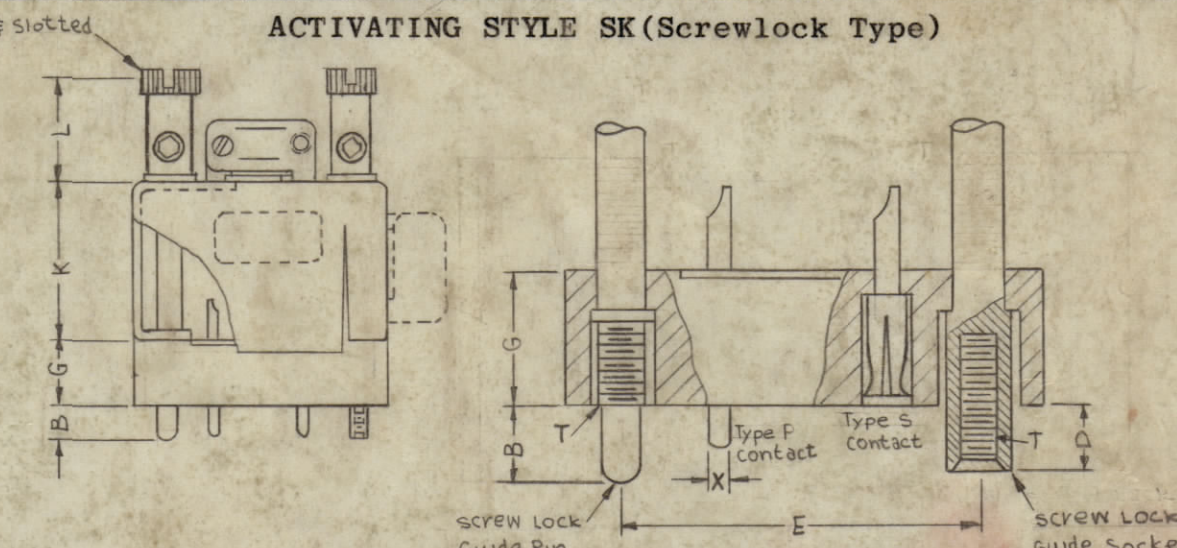
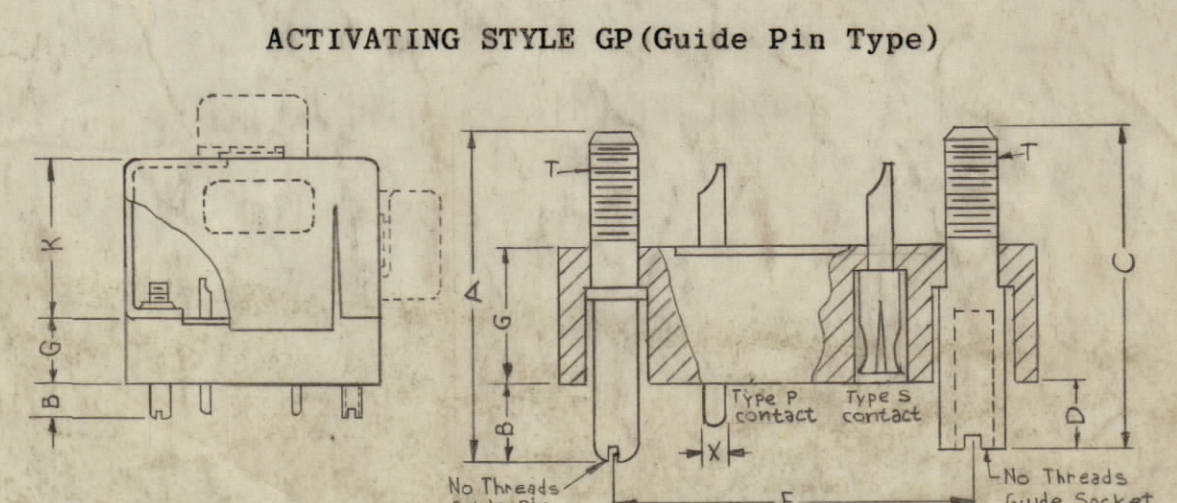


STANDARD DRAWING

| TMC PART NUMBER | MFR. PART NUMBER | TYPE | ACTIVATING STYLE | HOOD STYLE See Pictorial | CONTACT STYLE | NO. OF CONTACTS | SOLDER CUP ACCOMMODATES | DIMENSIONS | | | | | | | | | | | | MATES WITH | FIRST USED | MFG. | | | |
|-----------------|------------------|---------------|-----------------------------------|--------------------------|---------------|-----------------|-------------------------|------------|------|------|------|-------|------|------|-------|-------|------|------------|------|------------|------------|-------|----------|----------------------|---|
| | | | | | | | | A | B | C | D | E | F | G | J | K | L | M | T | | | | W | X (Pin Dia. If Male) | Y |
| PL 225-1* | SM5 *-20-H | Sub-Miniature | Guide Pins (GP) | H | 5 | 5 | No. 20 AWG | .530 | .190 | .470 | .060 | .500 | .230 | .220 | .750 | .380 | None | .140X.280 | 2-56 | .278 | .040 | .760 | JJ 242-1 | HFS-1 | A |
| PL 225-2* | SM7 *-20-H | Sub-Miniature | Guide Pins (GP) | H | 7 | 7 | No. 20 AWG | .530 | .130 | .470 | .060 | .625 | .230 | .220 | .875 | .360 | None | .180 X.380 | 2-56 | .300 | .040 | .880 | JJ 242-2 | | A |
| PL 225-3* | SM11*-20-H | Sub-Miniature | Guide Pins (GP) | H | 11 | 11 | No. 20 AWG | .530 | .130 | .470 | .060 | .625 | .340 | .220 | .875 | .940 | None | .250 X.500 | 2-56 | .400 | .040 | .940 | JJ 242-3 | HFS-1 | A |
| PL 225-4* | MA14*-16-SKH | Miniature | Screwlock (SK) | H | 14 | 14 | No. 16 AWG | N/A | .220 | N/A | .160 | .937 | .440 | .360 | 1.250 | .750 | .500 | .44 X.59 | 6-32 | .500 | .062 | 1.250 | JJ 242-4 | TER-25K-A50 | A |
| PL 225-5* | 5040-14*SKH1 | Sub-Miniature | Screwlock (SK) SIDE Cable Opening | H-1 | 14 | 14 | No. 20 AWG | N/A | .130 | N/A | .110 | .750 | .340 | .220 | 1.000 | .940 | .530 | .250 X.500 | 2-56 | .400 | .040 | 1.000 | JJ 242-5 | HFR-2 | B |
| PL 225-6* | 5040-20*SKH1 | Sub-Miniature | Screwlock (SK) SIDE Cable Opening | H-1 | 20 | 20 | No. 20 AWG | N/A | .130 | N/A | .110 | 1.000 | .340 | .220 | 1.250 | 1.190 | .530 | .250 X.560 | 2-56 | .400 | .040 | 1.250 | JJ 242-6 | HFR-2 | B |
| PL-225-7* | SM5*20-SKH | Sub-Miniature | SCREWLOCK (SK) TOP CABLE OPEN | H | 5 | 5 | NO. 20 AWG | N/A | .130 | N/A | .110 | .500 | .230 | .220 | .750 | .380 | .560 | .140X.280 | 2-56 | .278 | .040 | .760 | JJ242-7 | RAK-106 | A |
| PL 225-8* | 5040-14*SK | SUB-MINIATURE | SCREWLOCK (SK) TOP CABLE OPEN | SK | 14 | 14 | NO. 20 AWG | N/A | .130 | .91 | .110 | .750 | .340 | .220 | 1.000 | N/A | N/A | N/A | 2-56 | N/A | .040 | N/A | JJ242-5 | | A |
| PL-225-9* | 5040-20*SKH | SUB-MINIATURE | SCREWLOCK (SK) TOP CABLE OPEN | H | 20 | 20 | NO. 20 AWG | N/A | .130 | N/A | .110 | 1.000 | .340 | .220 | 1.250 | 1.190 | .530 | .250 X.560 | 2-56 | .400 | .040 | 1.250 | JJ242-6 | RAK 110 | B |



MATERIALS AND FINISHES:
 CONTACTS - MALE - Brass, Gold Over Silver Plated
 FEMALE - Spring Temper Phosphor Bronze, Gold Over Silver Plated
 MOLDING COMPOUND - Glass Filled Diallyl Phthalate
 Type GDI-30 (Per MIL-M-19833)
 GUIDE PINS AND SOCKETS - Stainless Steel, Passivated
 SCREW LOCKS - Stainless Steel, Passivated
 HOODS - Aluminum, Anodized

MECHANICAL SPECIFICATIONS:
 CONTACT SPACING:
 Sub-Miniature Type - .125 In. C to C
 Miniature Type - .150 In. C to C

ELECTRICAL SPECIFICATIONS:
 VOLTAGE BREAKDOWN:
 At Sea Level - Sub-Miniature Type: 1900 VRMS
 Miniature Type: 2100 VRMS
 At 60,000 Feet - Sub-Miniature Type: 700 VRMS
 Miniature Type: 750 VRMS
 Current Rating: 7.5 Amps Maximum

NOTE: HOOD STYLES WITH SIDE CABLE CLAMP SHOULD NOT BE USED UNLESS ABSOLUTELY NECESSARY.

ALL CONTACT STYLES SHOWN BELOW ARE VIEWED FROM THE ENGAGING END

| CONTACT STYLE | MALE | FEMALE |
|------------------|------|--------|
| CONTACT STYLE 5 | | |
| CONTACT STYLE 7 | | |
| CONTACT STYLE 11 | | |
| CONTACT STYLE 14 | | |
| CONTACT STYLE 20 | | |

TMC PART NUMBER SHALL BE AS SHOWN IN THE FOLLOWING FORM:

PL-225-1 - *

BASIC TMC PART NUMBER DENOTES TYPE OF CONTACTS
 * - P - PIN (Male)
 * - S - SOCKET (Female)

NOTICE TO PERSONS RECEIVING THIS DRAWING
 THE TECHNICAL MATERIEL CORPORATION claims proprietary right in the material disclosed herein. This drawing is issued in confidence for engineering information only and may not be reproduced or used to manufacture anything shown hereon without permission from THE TECHNICAL MATERIEL CORPORATION to the user. This drawing is loaned for mutual assistance and is subject to recall at any time.
 Property of:
 THE TECHNICAL MATERIEL CORPORATION
 MAMARONECK, NEW YORK

| REV | ZONE | DESCRIPTION | DATE | CH. NO. | DRAFTS | CHECKER | ENG. APP. |
|-----|--------|---|----------|---------|--------|---------|-----------|
| K | | CHGD POS. OF GUIDE PIN FEMALE CONN. RELOC. LETTERING OF STYLE 20 CONN. | 11-23-66 | 17310 | RME | WJ | WJ |
| J | | ADDED PL225-9 TO CHART | 8-24-66 | 16800 | RME | WJ | WJ |
| H | D5 | NOTE 00D STYLES ADDED - ON STYLE "H" CABLE CLAMP NOTE ADDED | 7-13-66 | 16520 | GDL | WJ | WJ |
| G | | PL 225-8 ADDED PICT HOOD STYLE SK ADDED. P/N CHART REVISED | 5-2-66 | 16189 | WJ | WJ | WJ |
| F | | PL-225-11 "K" WAS .660; "M" WAS .187 DIA; "W" WAS .300; "Y" WAS .810; PL-225-7 ADDED. | 2-2-65 | 13409 | WJ | WJ | WJ |
| E | B1,2 | CONTACT STYLE 20 PICTORIAL ADDED | 7-23-64 | 11810 | JTB | WJ | WJ |
| D | B3, D1 | PL 225-5* SK ADDED TO CHART | 7-9-63 | 9481 | WJ | WJ | WJ |
| C | B5, E2 | ARCHIVING INFO CHART DELETED, CONTACT SPECS REVISED | 3-25-63 | 8627 | WJ | WJ | WJ |
| B | | ADDED DIM'S ON HOOD STYLE H(TOP) DIM Y WAS J | 7-30-62 | 6795 | WJ | WJ | WJ |
| A | | DWG REVISED COMPLETELY REDRAWN & REVISED FROM 4-SIZE | 4-3-62 | 6520 | WJ | WJ | WJ |

UNLESS OTHERWISE SPECIFIED:
 DIMENSIONS ARE IN INCHES
 TOLERANCES ON FRACTIONS ± 1/64 DECIMALS ± .005 ANGLES ± 1/2°
 MAXIMUM ALLOWABLE TOLERANCES HAVE BEEN DETERMINED AND ANY DEVIATIONS WILL BE CAUSE FOR REJECTION. REMOVE ALL BURRS & SHARP EDGES

| REQ. PER UNIT | MODEL | SECTION | ASS'Y. NO. | DATE |
|---------------|-------|---------|------------|--------|
| | | | | 4-3-62 |

| REQ. ITEM | PART NO. | DESCRIPTION | SYMBOL |
|-----------|----------|---|--------|
| | | THE TECHNICAL MATERIEL CORP. MAMARONECK, NEW YORK | |
| | | CONNECTOR, PLUG, SUB-MINIATURE & SUB-MINIATURE | |
| | | PL-225 | K |