

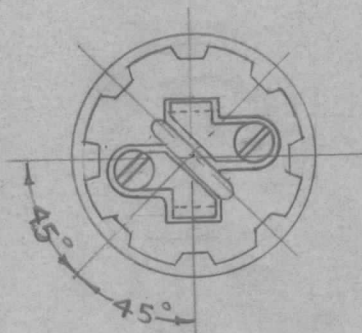
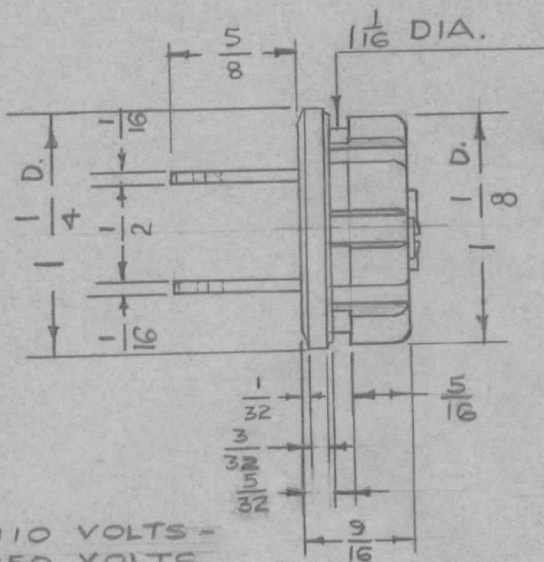
PL-108

IF IT IS FOUND DESIRABLE TO CHANGE ANY TOLERANCE OR OTHER DETAIL SPECIFIED ON THIS DRAWING NOTIFY THE PURCHASER PROMPTLY.

MAXIMUM ALLOWABLE TOLERANCES HAVE BEEN DETERMINED AND DEVIATIONS WILL BE CAUSE FOR REJECTION. REMOVE ALL BURRS AND SHARP EDGES

USED ON

MODEL	PROJECT NO.	ASS'Y. NO.	DATE
TWR-115	151	A-220	10-16-52



NOTE: 15 AMP.-110 VOLTS -
OR: 10 AMP.-250 VOLTS.

DIMENSIONS FOR REF. ONLY
REF.: AMPHENOL CAT. NO. 61-M

REQ.	ITEM	PART NO.	DESCRIPTION	SYMBOL
		//	THE TECHNICAL MATERIEL CORP. MAMARONECK, NEW YORK	
		STOCK SIZE		
		BAKELITE //	MALE PLUG	
		MATERIAL WEIGHT PER PC.		
		//	10-16-52	
		TYPE & TEMPER		
		//	W.D.C 11-8	
		HEAT TREAT. SPEC.		
		//	CHECKED	
		FINISH & SPEC. NO.		
			DRAWN ELEC. DES. APP. MECH. DES. APP.	
			FINAL APPROVAL	
			PL-108	

ISSUE	ITEM	CHANGED FROM	DATE	CN. NO.	DRAFTS	CHECKER	ENG. APP.
TOLERANCES			SCALE FULL SIZE				
ALL OTHERS	DEC. DIM. ± FRAC. DIM. ± ANGULAR DIM. ±		DRILL, PUNCH, COMMERCIAL STOCK SIZES AND MANUFACTURERS TOLERANCES ARE NOT INCLUDED.				