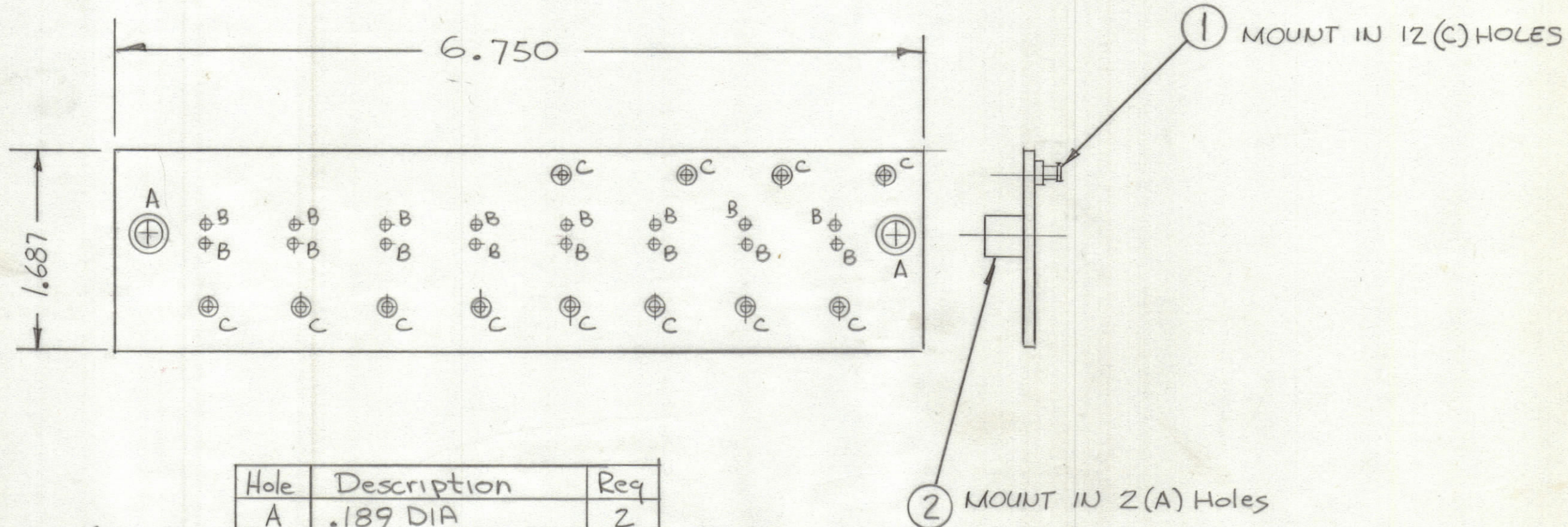


REVISIONS							
ZONE	LTR	DESCRIPTION	DATE	E.M.N.NO	DRAFT	CHKD	APPD
	Ø	ORIGINAL RELEASE FOR PRODUCTION	9-20-79	A	MAC		EB



NOTE:
 1. OVERALL MATERIAL THICKNESS .062 ± .006 (pp 3.1, 3.2)
 2. CONDUCTOR PATTERN TO BE COPPER FOIL AS PER PP 4.1
 PLATING TO BE TIN LEAD AS PER (PP 13.2, 13.1)
 3. MATERIAL TO BE GIO GLASS EPOXY LAMINATE
 2 OZ COPPER.

Hole	Description	Req
A	.189 DIA	2
B	.055 DIA	16
C	.081 DIA	12
Unmarked Holes .042 DIA		

QTY. REQ.	ITEM	PART NO.	DESCRIPTION	SYMBOL
2	Z	TE164-8	Terminal Standoff	A
12	I	TE127-2	Terminal Stud	C

LIST OF MATERIAL

UNLESS OTHERWISE SPECIFIED DIMENSIONS ARE IN INCHES AND INCLUDE CHEMICALLY APPLIED OR PLATED FINISHES		FINAL APPROVAL <i>[Signature]</i>	DATE 9/20/79	THE TECHNICAL MATERIEL CORP. MAMARONECK, NEW YORK PRINTED CIRCUIT BD. INDICATORS
TOLERANCES ON		MECH. DES.	DATE	
DECIMALS	FRACTIONS	ELECT. DES.	DATE	
.X ± .05	± 1/64	CHECKED	DATE	
.XX ± .01	ANGLES	DRAWN <i>[Signature]</i>	DATE 9-9-79	
.XXX ± .005	± 0° .30'			
MATERIAL				SIZE CODE IDENT. NO. DWG NO. ISSUE
FINISH				C 82679 PC808 Ø
		SCALE		SHEET OF

2	MFT-10K/J	A5765
QTY / UNIT	MODEL USED ON	ASS'Y NO.
APPLICATION		
CODE		
NOTICE TO PERSONS RECEIVING THIS DRAWING THE TECHNICAL MATERIEL CORPORATION claims proprietary right in the material disclosed hereon. This drawing is issued in confidence for engineering information only and may not be reproduced or used to manufacture anything shown hereon without permission from THE TECHNICAL MATERIEL CORPORATION to the user. This drawing is loaned for mutual assistance and is subject to recall at any time.		

PC808