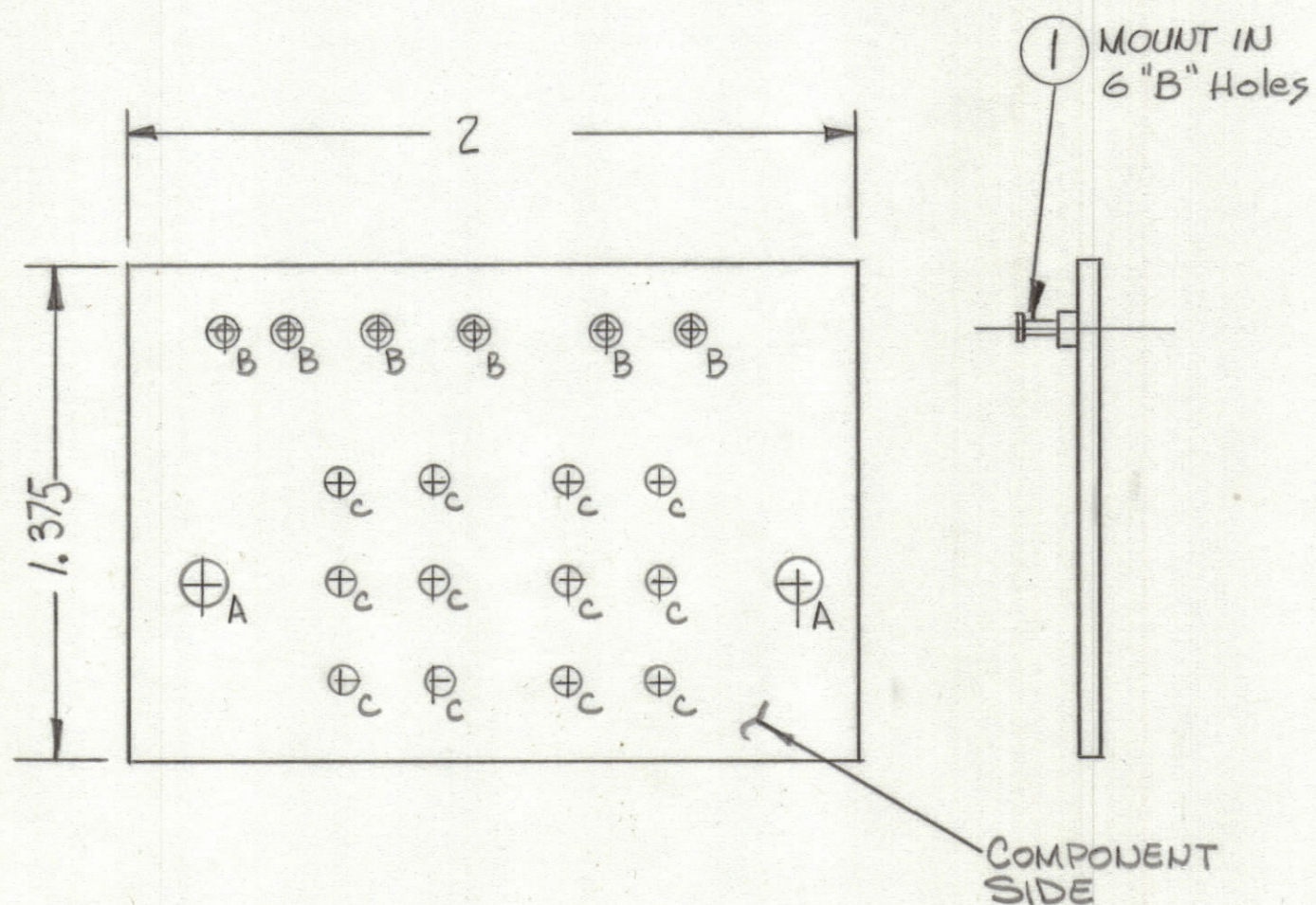


REVISIONS							
ZONE	LTR	DESCRIPTION	DATE	E.M.N.NO	DRAFT	CHKD	APPD
	Ø	ORIGINAL RELEASE	4-22-81				



Hole	Description	Req.
A	11/64 DIA.	2
B	.081 DIA.	6
C	.070 DIA.	12

- FABRICATION NOTES:
 TO BE MANUFACTURED IN ACCORDANCE WITH TMC SPEC S735 AND SPECIFICALLY
- OVERALL MATERIAL THICKNESS $.062 \pm .006$ AS PER (pp3.1,3.2)
 - CONDUCTOR PATTERN TO BE COPPER FOIL AS PER (pp4.1), PLATING TO BE TIN LEAD AS PER (pp13.2.2,13.2.1)
 - MATERIAL TO BE G10 GLASS EPOXY, LAMINATE 2 OZ COPPER CLAD,
 -
 - ALL HOLES TO BE PLATED THRU AS PER (pp 8.9.5) UNLESS OTHERWISE SPECIFIED

SCALE 2:1

1	RCST-1	A5730
QTY / UNIT	MODEL USED ON	ASS'Y NO.
APPLICATION		
CODE		

NOTICE TO PERSONS RECEIVING THIS DRAWING
 THE TECHNICAL MATERIEL CORPORATION claims proprietary right in the material disclosed hereon. This drawing is issued in confidence for engineering information only and may not be reproduced or used to manufacture anything shown hereon without permission from THE TECHNICAL MATERIEL CORPORATION to the user. This drawing is loaned for mutual assistance and is subject to recall at any time.

UNLESS OTHERWISE SPECIFIED DIMENSIONS ARE IN INCHES AND INCLUDE CHEMICALLY APPLIED OR PLATED FINISHES

TOLERANCES ON
 DECIMALS .X $\pm .05$
 .XX $\pm .01$
 .XXX $\pm .005$
 FRACTIONS $\pm 1/64$
 ANGLES $\pm 0^\circ -30'$

MATERIAL
 FINISH

5	1	TE127-2	TERMINAL, STUD	6
QTY. REQ.	ITEM	PART NO.	DESCRIPTION	SYMBOL

LIST OF MATERIAL

FINAL APPROVAL	DATE
MECH. DES.	DATE
ELECT. DES.	DATE
CHECKED	DATE
DRAWN <i>[Signature]</i>	DATE 4-15-81

THE TECHNICAL MATERIEL CORP.
 MAMARONECK, NEW YORK

PRINTED CIRCUIT Bd
 (SWITCHING)

SIZE	CODE IDENT.NO.	DWG NO.	ISSUE
C	82679	PC792	Ø
SCALE	SHEET		OF