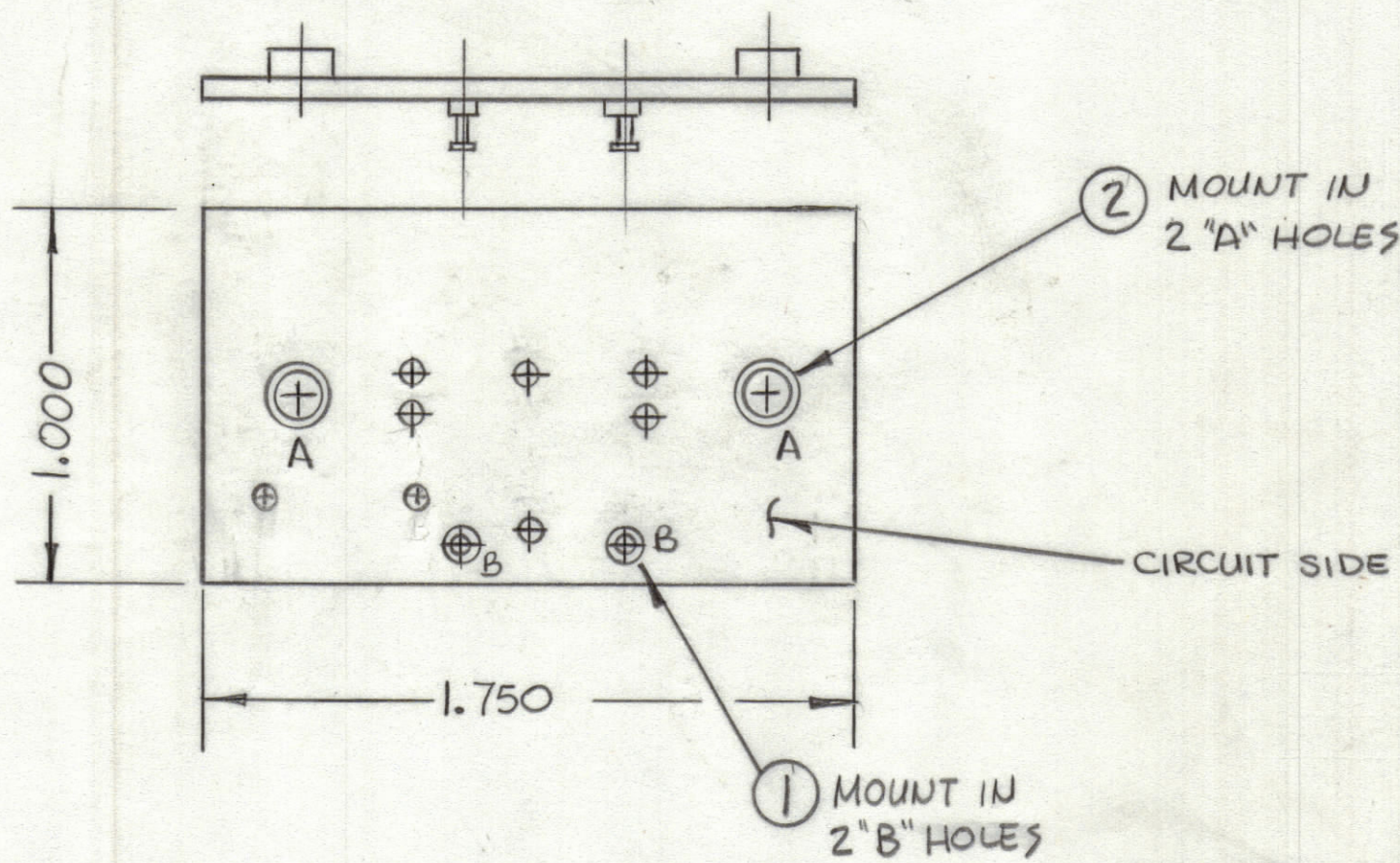


REVISIONS							
ZONE	LTR	DESCRIPTION	DATE	E.M.N.NO	DRAFT	CHKD	APPD



HOLE	DESCRIPTION	REQ
A	.189 DIA	2
B	.081 DIA	2
UNMARKED HOLES .055 DIA		

FABRICATION NOTES:
 TO BE MANUFACTURED IN ACCORDANCE WITH TMC SPEC S735 AND SPECIFICALLY
 1. OVERALL MATERIAL THICKNESS .062±.006 AS PER (pp3.1,3.2)
 2. CONDUCTOR PATTERN TO BE COPPER FOIL AS PER (pp4.1), PLATING TO BE TIN LEAD AS PER (pp13.2.2,13.2.1)
 3. MATERIAL TO BE G10 GLASS EPOXY, LAMINATE 2 OZ COPPER CLAD, (SINGLE SIDE)
 4. ALL HOLES TO BE PLATED THRU AS PER (pp 8.9.5) UNLESS OTHERWISE SPECIFIED

SCALE 2:1

QTY. REQ.	ITEM	PART NO.	DESCRIPTION	SYMBOL
2	Z	TE164	TERMINAL STANDOFF	A
2	1	TE127-2	TERMINAL STUD	B

LIST OF MATERIAL

QTY / UNIT	MODEL USED ON	ASSY NO.
1	RCST-1 AX5224	A5729
APPLICATION		
CODE		

UNLESS OTHERWISE SPECIFIED DIMENSIONS ARE IN INCHES AND INCLUDE CHEMICALLY APPLIED OR PLATED FINISHES

TOLERANCES ON
 DECIMALS .X ± .05
 .XX ± .01
 .XXX ± .005
 FRACTIONS ± 1/64
 ANGLES ± 0° -30'

MATERIAL
 FINISH

FINAL APPROVAL	DATE
MECH. DES. <i>[Signature]</i>	DATE
ELECT. DES.	DATE
CHECKED	DATE
DRAWN <i>[Signature]</i>	DATE 8-14-81

THE TECHNICAL MATERIEL CORP.
 MAMARONECK, NEW YORK

PRINTED CIRCUIT Bd.
 Indicators

SIZE	CODE IDENT.NO.	DWG NO.	ISSUE
C	82679	PC791	Ø
SCALE		SHEET	OF

NOTICE TO PERSONS RECEIVING THIS DRAWING
 THE TECHNICAL MATERIEL CORPORATION claims proprietary right in the material disclosed hereon. This drawing is issued in confidence for engineering information only and may not be reproduced or used to manufacture anything shown hereon without permission from THE TECHNICAL MATERIEL CORPORATION to the user. This drawing is loaned for mutual assistance and is subject to recall at any time.