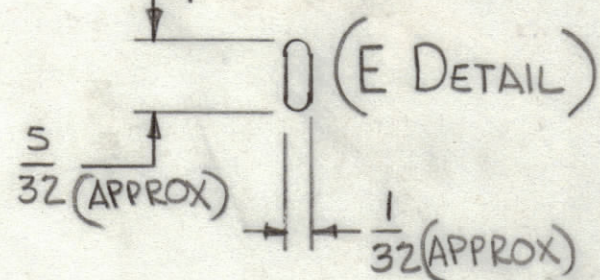
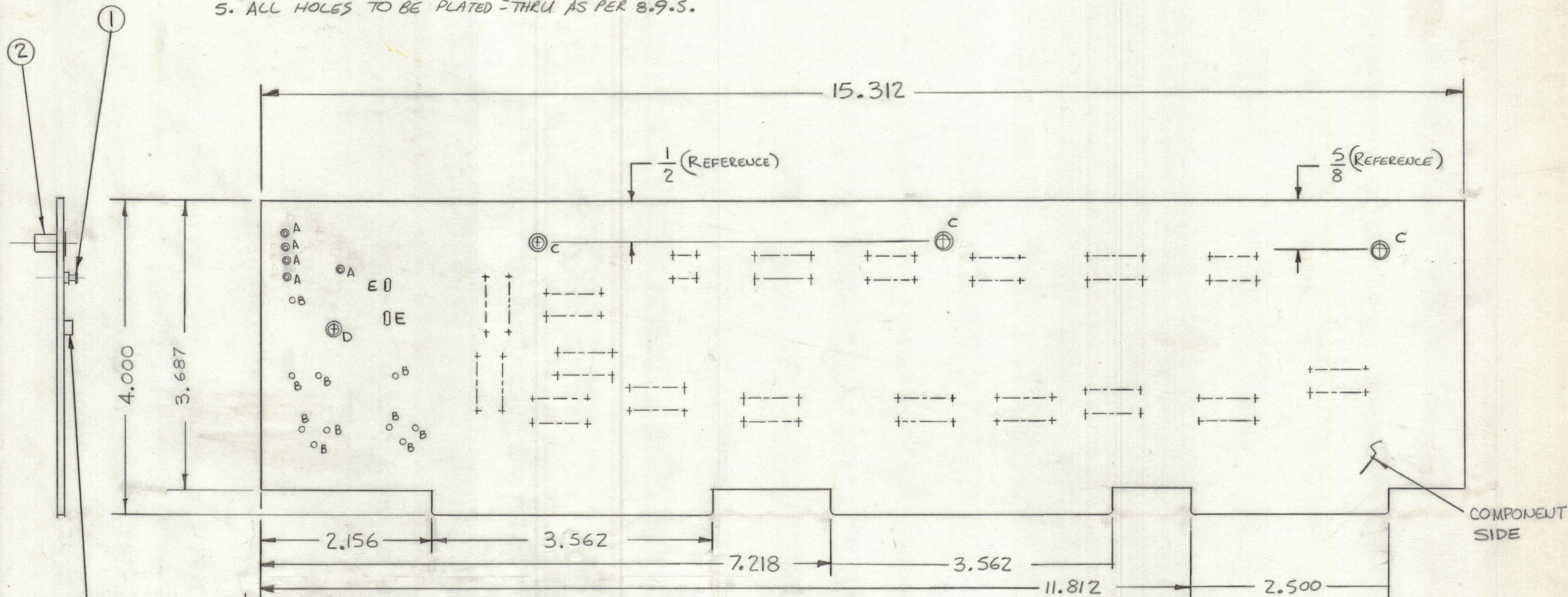


NOTE:
 FABRICATION NOTES SEE S735
 1. OVERALL MATERIAL THICKNESS .062±.006 AS PER PP3.1, 3.2
 2. CONDUCTOR PATTERN TO BE COPPER FOIL AS PER PP4.1.
 3. MATERIAL: GIO GLASS EPOXY LAMINATE 2 OZ COPPER CLAD.
 4. EDGE BOARD CONNECTOR FINGERS TO BE GOLD PLATED AS PER (PP10)
 5. ALL HOLES TO BE PLATED - THRU AS PER 8.9.5.

REVISIONS						
ZONE	LTR	DESCRIPTION	DATE	E.M.N.NO	DRAFT	CHKD APPD
	X1	Z18 Added, TRANSISTERS REVISED	2-20-78		SB	
	Ø	ORIGINAL RELEASE FOR PRODUCTION	1-7-60		WAC	SD



Hole	Description	Req
A	.081 DIA.	5
B	.062 DIA.	10
C	.189 DIA.	3
D	.189 DIA.	1
E	SLOT See Detail	2
UNMARKED HOLES .050 DIA		

(Ref CK2175)

QTY. REQ.	ITEM	PART NO.	DESCRIPTION	SYMBOL
1	3	TE164-6	TERMINAL, STANDOFF	D
3	2	TE108-19	TERMINAL, STANDOFF	C
5	1	TE127-2	Terminal Stud	A

LIST OF MATERIAL

UNLESS OTHERWISE SPECIFIED DIMENSIONS ARE IN INCHES AND INCLUDE CHEMICALLY APPLIED OR PLATED FINISHES		FINAL APPROVAL <i>S.D.</i>	DATE 1/7/80
TOLERANCES ON		MECH. DES.	DATE
DECIMALS	FRACTIONS	ELECT. DES.	DATE
.X ± .05	± 1/64	CHECKED	DATE
.XX ± .01	ANGLES	DRAWN <i>SB</i>	DATE 2-20-78
.XXX ± .005	± 0°-30'		

THE TECHNICAL MATERIEL CORP.
 MAMARONECK, NEW YORK

PRINTED CIRCUIT Bd

QTY / UNIT	MODEL USED ON	ASS'Y NO.
APPLICATION		
CODE		
NOTICE TO PERSONS RECEIVING THIS DRAWING		
THE TECHNICAL MATERIEL CORPORATION claims proprietary right in the material disclosed hereon. This drawing is issued in confidence for engineering information only and may not be reproduced or used to manufacture anything shown hereon without permission from THE TECHNICAL MATERIEL CORPORATION to the user. This drawing is loaned for mutual assistance and is subject to recall at any time.		
MATERIAL		
FINISH		

SIZE	CODE IDENT. NO.	DWG NO.	ISSUE
C	82679	PC790	Ø
SCALE	SHEET		OF