

4

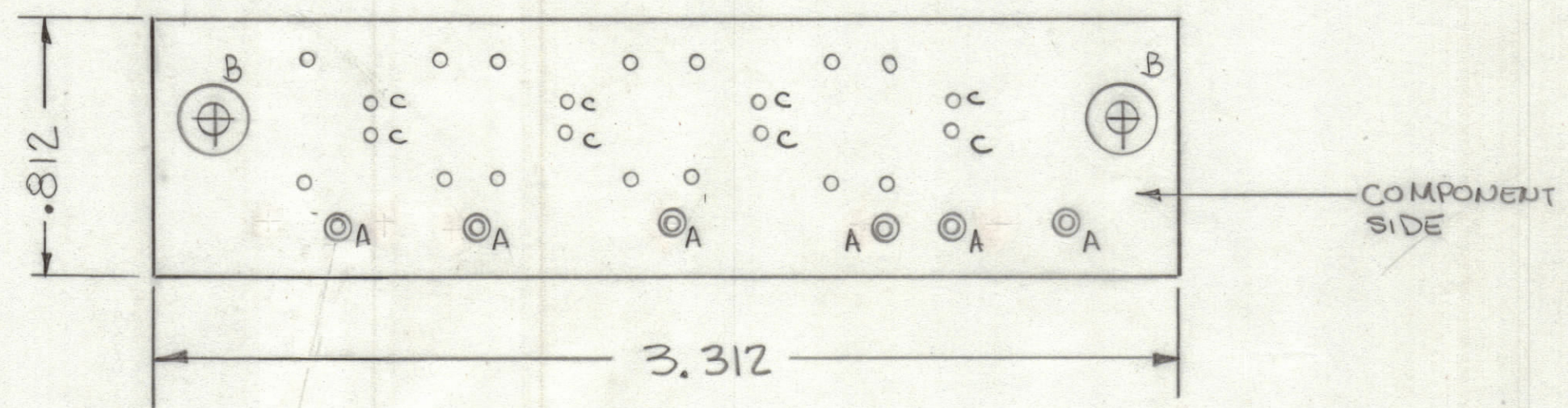
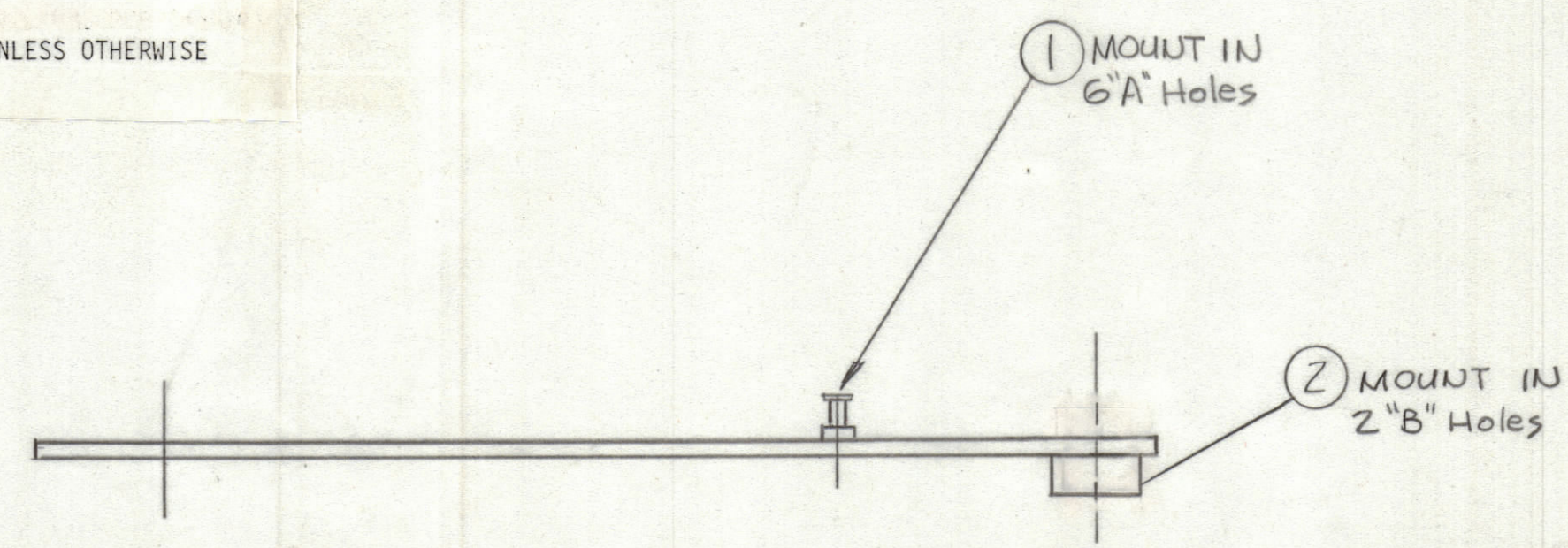
3

2

1

REVISIONS							
ZONE	LTR	DESCRIPTION	DATE	E.M.N.NO	DRAFT	CHKD	APPD
	0	ORIGINAL RELEASE	4-22-81				

FABRICATION NOTES:  
 TO BE MANUFACTURED IN ACCORDANCE WITH TMC SPEC S735 AND SPECIFICALLY  
 1. OVERALL MATERIAL THICKNESS .062±.006 AS PER (pp3.1,3.2)  
 2. CONDUCTOR PATTERN TO BE COPPER FOIL AS PER (pp4.1), PLATING TO BE TIN LEAD AS PER (pp13.2.2,13.2.1)  
 3. MATERIAL TO BE G10 GLASS EPOXY, LAMINATE 2 OZ COPPER CLAD,  
 4.  
 5. ALL HOLES TO BE PLATED THRU AS PER (pp 8.9.5) UNLESS OTHERWISE SPECIFIED



Hole	Description	Req
A	.081 DIA	6
B	.189 DIA.	2
C	.055 DIA	8
	Unmarked Holes .042 DIA	

SCALE 2:1

QTY. REQ.	ITEM	PART NO.	DESCRIPTION	SYMBOL
2	2	TE164-	TERMINAL STAUDOFF	B
6	1	TE127-2	TERMINAL STUD	A

LIST OF MATERIAL				
UNLESS OTHERWISE SPECIFIED DIMENSIONS ARE IN INCHES AND INCLUDE CHEMICALLY APPLIED OR PLATED FINISHES		FINAL APPROVAL	DATE	<b>THE TECHNICAL MATERIEL CORP.</b> MAMARONECK, NEW YORK  <b>PRINTED CIRCUIT BD.</b> <b>(INDICATORS)</b>
TOLERANCES ON		MECH. DES.	DATE	
DECIMALS .X ± .05		ELECT. DES.	DATE	
FRACTIONS ± 1/64		CHECKED	DATE	
.XX ± .01		DRAWN	DATE	SIZE CODE IDENT.NO. DWG NO. ISSUE C 82679 PC785 $\emptyset$
.XXX ± .005				
1 RCST-1 A5722 QTY / UNIT MODEL USED ON ASS'Y NO. APPLICATION CODE		NOTICE TO PERSONS RECEIVING THIS DRAWING THE TECHNICAL MATERIEL CORPORATION claims proprietary right in the material disclosed hereon. This drawing is issued in confidence for engineering information only and may not be reproduced or used to manufacture anything shown hereon without permission from THE TECHNICAL MATERIEL CORPORATION to the user. This drawing is loaned for mutual assistance and is subject to recall at any time.		SHEET OF

4

3

2

1

PC785