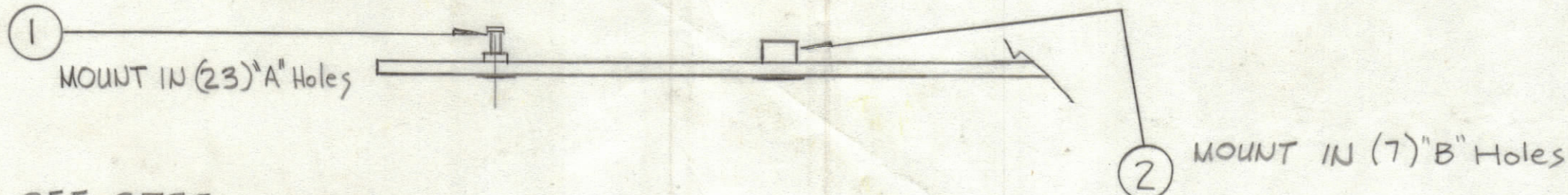
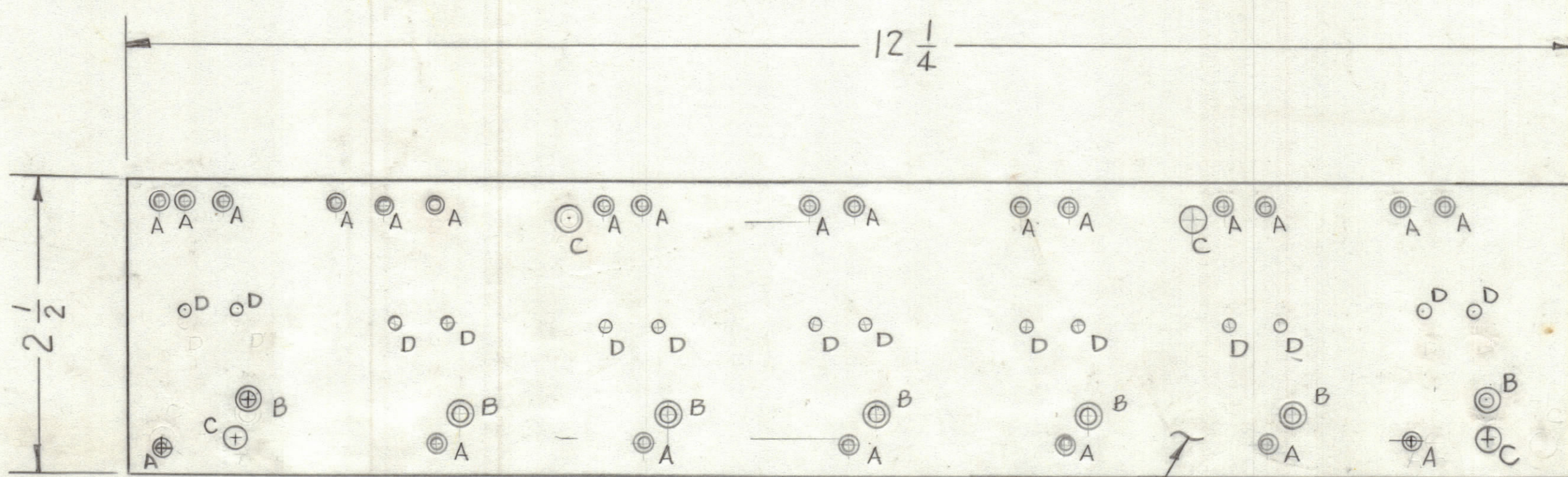


REVISIONS						
ZONE	LTR	DESCRIPTION	DATE	E.M.N.NO	DRAFT	CHKD APPD
	X1	(2) C Holes Relocated	11-14-77		RU	
	X2	7 DIODES Added, Lands Revised Trans.	12-5-77		RU	
	X3	(5) Holes lands Modified (GND)	3-19-78		RU	
	Ø	ORIGINAL RELEASE FOR PRODUCTION	6-5-78		RU	WB *



- NOTE**  
 FABRICATION NOTES SEE S735  
 1. OVERALL MATERIAL THICKNESS .062 ± .006 AS PER pp 3.1, 3.2.  
 2. CONDUCTOR PATTERN TO BE COPPER FOIL AS PER pp 4.1.  
 3. PLATING TO BE TIN LEAD AS PER pp 13.2.2, 13.2.1.  
 4. MATERIAL: G10 GLASS EPOXY LAMINATE 2 OZ COPPER CLAD.  
 5. ALL HOLES TO BE PLATED-THRU AS PER (pp 8.9.5)

Hole	Description	Req
A	.081 DIA	23
B	.189 DIA	7
C	11/64 DIA	4
D	1/8 DIA	14
.042 DIA. UNMARKED Holes		

QTY. REQ.	ITEM	PART NO.	DESCRIPTION	SYMBOL
7	2	TE164-6	TERMINAL, STANDOFF	B
23	1	TE127-2	TERMINAL, STUD	A

LIST OF MATERIAL

**THE TECHNICAL MATERIEL CORP.**  
 MAMARONECK, NEW YORK

**PRINTED CIRCUIT Bd.**  
**SWITCHING CIRCUIT**

SIZE	CODE IDENT. NO.	DWG NO.	ISSUE
C	82679	PC 778	Ø

UNLESS OTHERWISE SPECIFIED DIMENSIONS ARE IN INCHES AND INCLUDE CHEMICALLY APPLIED OR PLATED FINISHES

TOLERANCES ON

DECIMALS	FRACTIONS
.X ± .05	± 1/64
.XX ± .01	ANGLES
.XXX ± .005	± 0° -30'

MATERIAL

FINISH

FINAL APPROVAL: [Signature] DATE: 6/2/75  
 MECH. DES. [Signature] DATE: 9-6-77  
 ELECT. DES. [Signature] DATE: [Blank]  
 CHECKED: [Signature] DATE: 12/5/77  
 DRAWN: [Signature] DATE: 9-5-77

QTY / UNIT	MODEL USED ON	ASSY NO.
1	MMX-2B	A5714
APPLICATION		
CODE		
<small>NOTICE TO PERSONS RECEIVING THIS DRAWING</small> <small>THE TECHNICAL MATERIEL CORPORATION claims proprietary right in the material disclosed hereon. This drawing is issued in confidence for engineering information only and may not be reproduced or used to manufacture anything shown hereon without permission from THE TECHNICAL MATERIEL CORPORATION to the user. This drawing is loaned for mutual assistance and is subject to recall at any time.</small>		