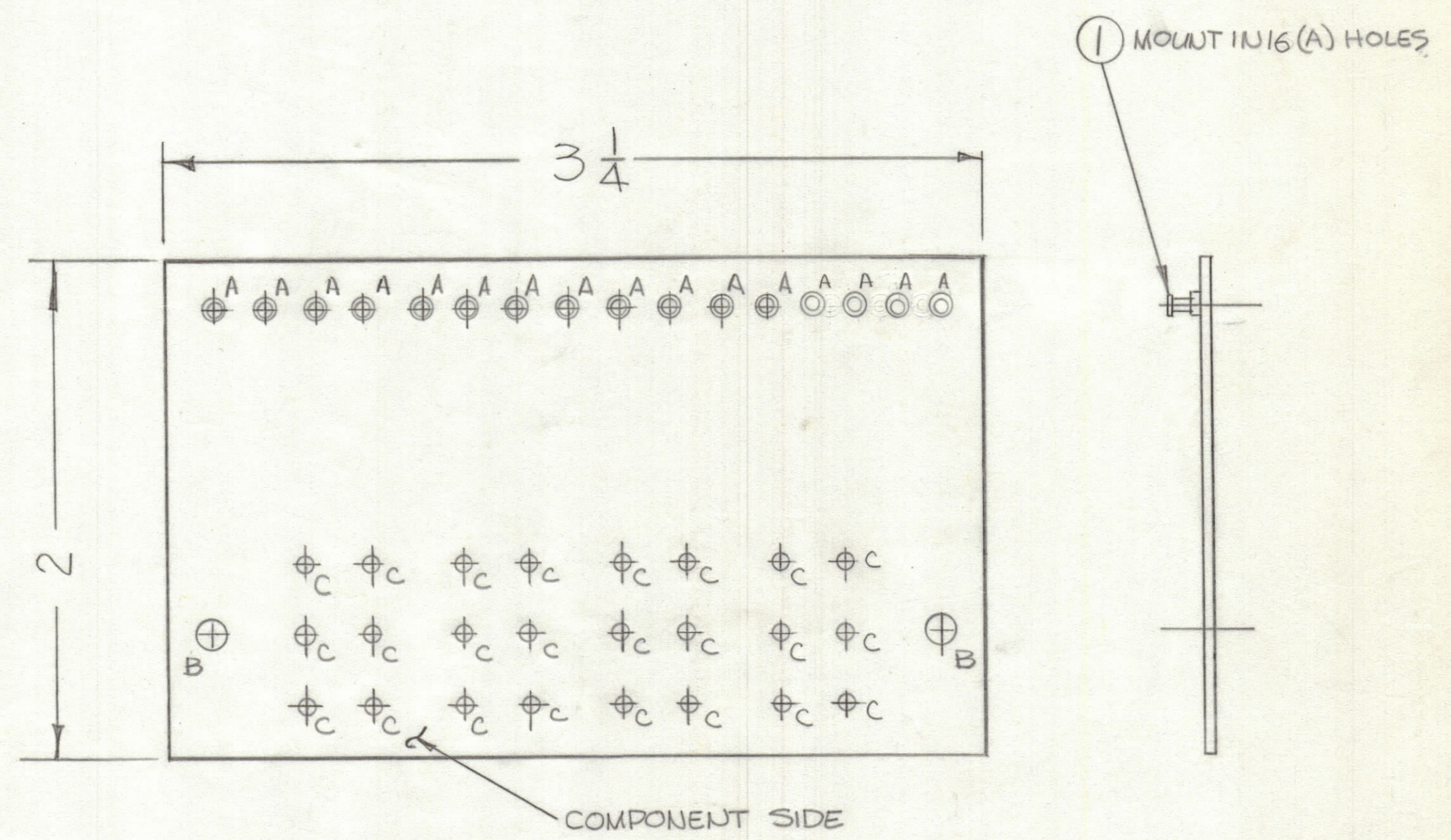


REVISIONS						
ZONE	LTR	DESCRIPTION	DATE	E.M.N.NO	DRAFT	CHKD APPD
	X1	Item D was 15, Circuit Revised as per Schematic	11-7-77		<i>[Signature]</i>	
	0	ORIGINAL RELEASE FOR PRODUCTION	6-5-78		RU <i>[Signature]</i>	WJB *

NOTE:
 FABRICATION NOTES SEE 5735
 1. OVERALL MATERIAL THICKNESS .062±.006 AS PER PP3.1, 3.2.
 2. CONDUCTOR PATTERN TO BE COPPER FOIL AS PER PP4.1.
 3. PLATING TO BE TIN LEAD AS PER PP13.2.2, 13.2.1.
 4. MATERIAL: GIO GLASS EPOXY LAMINATE 2 OZ COPPER CLAD.
 5. ALL HOLES TO BE PLATED-THRU AS PER PP8.9.5.



Hole	Description	Req.
A	.081 DIA	16
B	11/64 DIA	2
C	.070 DIA	24
UNMARKED Holes .042D.		

SCALE 2:1

16	1	TE127-2	TERMINAL, STUD	A
QTY. REQ.	ITEM	PART NO.	DESCRIPTION	SYMBOL
LIST OF MATERIAL				
UNLESS OTHERWISE SPECIFIED DIMENSIONS ARE IN INCHES AND INCLUDE CHEMICALLY APPLIED OR PLATED FINISHES		FINAL APPROVAL <i>[Signature]</i>	DATE 8/2/78	THE TECHNICAL MATERIEL CORP. MAMARONECK, NEW YORK PRINTED CIRCUIT BD, PUSH SWITCH CONTROLS
TOLERANCES ON		MECH. DES. <i>[Signature]</i>	DATE 8-18-77	
DECIMALS	FRACTIONS	ELECT. DES.	DATE	
.X ± .05	± 1/64	CHECKED <i>[Signature]</i>	DATE 12/2/77	
.XX ± .01	ANGLES	DRAWN <i>[Signature]</i>	DATE 8-18-77	SIZE C
.XXX ± .005	± 0° -30'	MATERIAL		CODE IDENT. NO. 82679
FINISH		DWG NO. PC775		ISSUE <i>[Signature]</i>
NOTICE TO PERSONS RECEIVING THIS DRAWING				SCALE
THE TECHNICAL MATERIEL CORPORATION claims proprietary right in the material disclosed hereon. This drawing is issued in confidence for engineering information only and may not be reproduced or used to manufacture anything shown hereon without permission from THE TECHNICAL MATERIEL CORPORATION to the user. This drawing is loaned for mutual assistance and is subject to recall at any time.				SHEET 1 OF