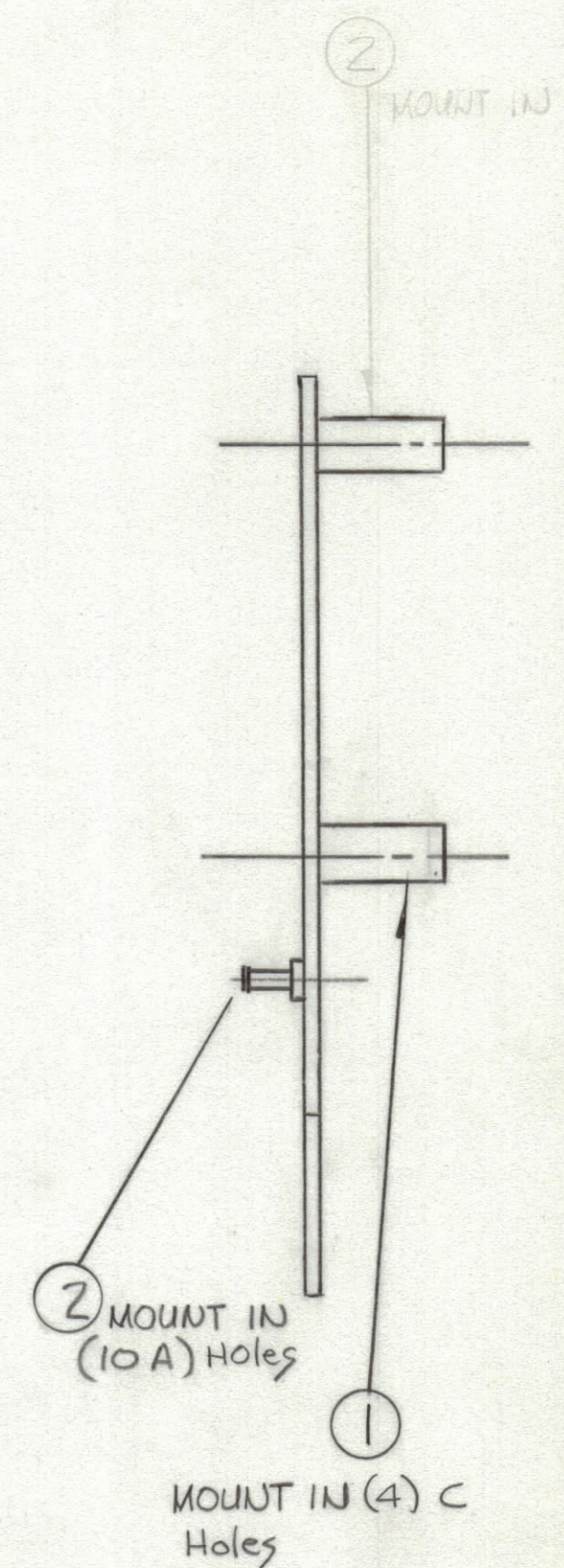
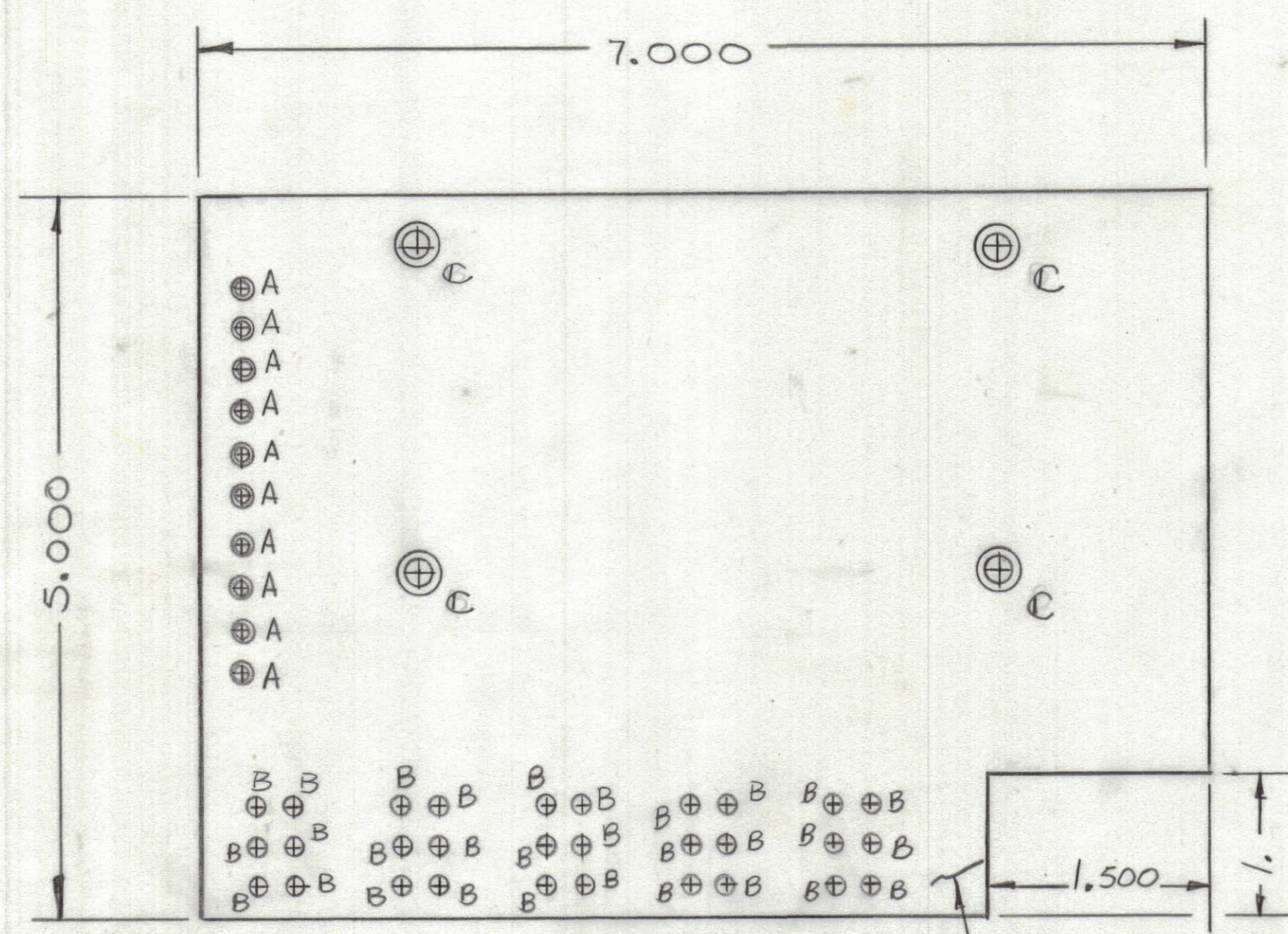


REVISIONS							
ZONE	LTR	DESCRIPTION	DATE	E.M.N.NO	DRAFT	CHKD	APPD

NOTE:

- FABRICATION NOTES SEE S735
- 1. OVERALL MATERIAL THICKNESS $.062 \pm .006$ AS PER pp3.1, 3.2
- 2. CONDUCTOR PATTERN TO BE COPPER FOIL AS PER pp4.1.
- 3. MATERIAL: GIO GLASS EPOXY LAMINATE 2 OZ COPPER CLAD.
- 4. PLATING TO BE TIN LEAD AS PER 13.2.1, 13.2.2.



HOLE	DESCRIPTION	REQ
A	.081 DIA.	10
B	.069 DIA	30
C	.189 DIA	4
UNMARKED .042 DIA		

(REF CK 2138)

QTY. REQ.	ITEM	PART NO.	DESCRIPTION	SYMBOL
4	2	TE108-20	STANDOFF	C
10	1	TE127-2	TERMINAL, STUD	A

THE TECHNICAL MATERIEL CORP.
MAMARONECK, NEW YORK

**PRINTED CIRCUIT BD,
CONTROL CIRCUITS**

SIZE	CODE IDENT.NO.	DWG NO.	ISSUE
C	82679	PC761	X
SCALE	SHEET		OF

UNLESS OTHERWISE SPECIFIED DIMENSIONS ARE IN INCHES AND INCLUDE CHEMICALLY APPLIED OR PLATED FINISHES		FINAL APPROVAL	DATE
TOLERANCES ON		MECH. DES. <i>R Uno</i>	DATE 3-31-77
DECIMALS	FRACTIONS	ELECT. DES.	DATE
.X ± .05	± 1/64	CHECKED	DATE
.XX ± .01	ANGLES	DRAWN <i>R Uno</i>	DATE 3-31-77
.XXX ± .005	± 0° -30'	MATERIAL	
FINISH			

1	A X5220 (RCMT-1)	A5664
QTY / UNIT	MODEL USED ON	ASS'Y NO.
APPLICATION		
CODE		
NOTICE TO PERSONS RECEIVING THIS DRAWING THE TECHNICAL MATERIEL CORPORATION claims proprietary right in the material disclosed hereon. This drawing is issued in confidence for engineering information only and may not be reproduced or used to manufacture anything shown hereon without permission from THE TECHNICAL MATERIEL CORPORATION to the user. This drawing is loaned for mutual assistance and is subject to recall at any time.		