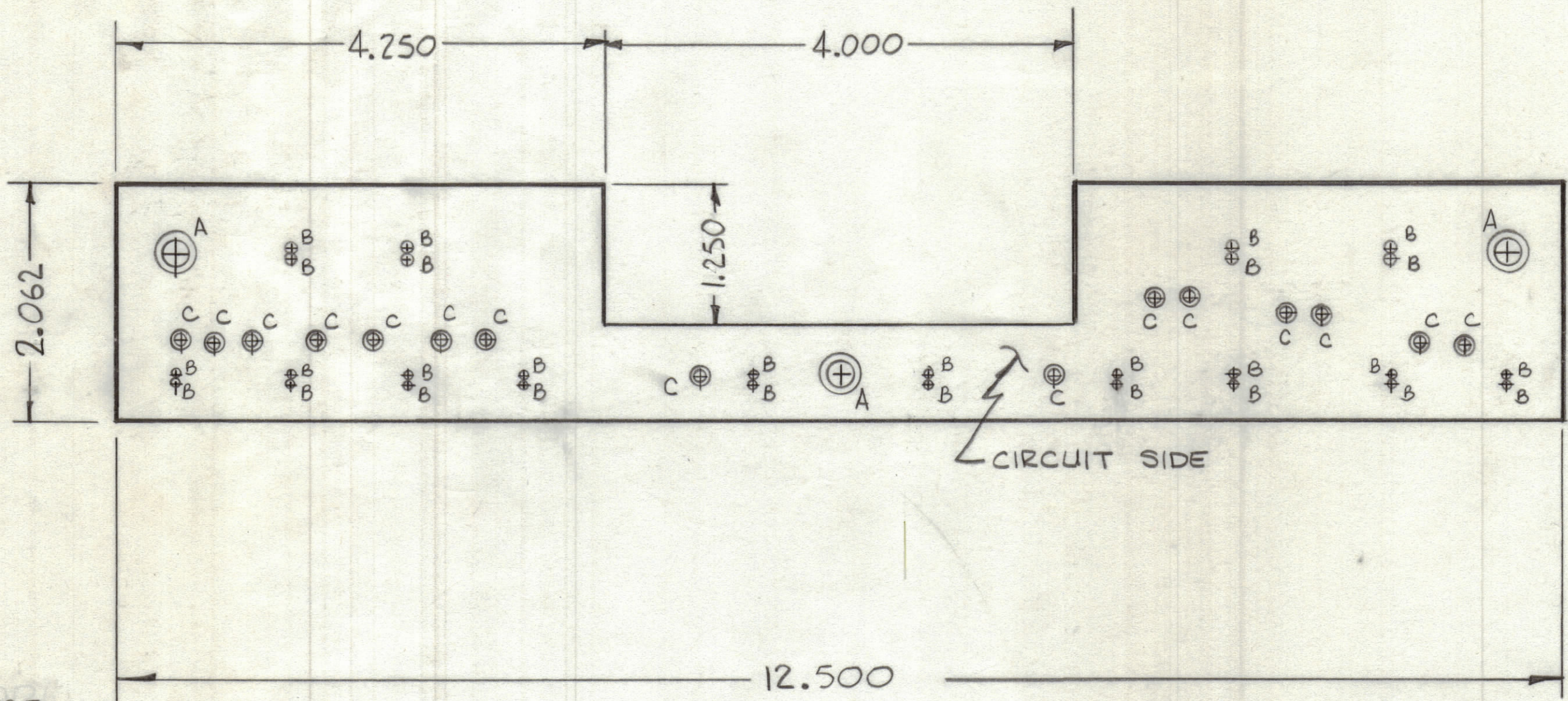


REVISIONS						
ZONE	LTR	DESCRIPTION	DATE	E.M.NNO	DRAFT	CHKD APPD
	A	RELEASED UNDER (A) REVISION R6, R7 ADDED	12-2-76			*



TO BE MANUFACTURED IN ACCORDANCE WITH TMC SPEC S735.

- OVERALL MATERIAL THICKNESS $.062 \pm .006$ AS PER PP 3.1, 3.2
- CONDUCTOR PATTERN TO BE COPPER FOIL AS PER PP 4.1
- PLATING TO BE TIN-LEAD AS PER 13.2.2, 13.2.1
- MATERIAL; GIO GLASS EPOXY LAMINATE 2 OZ COPPER CLAD.

HOLE	DESCRIPTION	REQ
A	.189 DIA	3
B	.062 DIA	28
C	.081 DIA	15
	UNMARKED .042	

QTY. REQ.	ITEM	PART NO.	DESCRIPTION	SYMBOL
3	2	TE164-1	TERMINAL, STANDOFF	
15	1	TE127-2	TERMINAL, STUD	C

LIST OF MATERIAL

THE TECHNICAL MATERIEL CORP.
MAMARONECK, NEW YORK

PRINTED CIRCUIT BD.
INDICATOR CIRCUIT

SIZE	CODE IDENT. NO.	DWG NO.	ISSUE
C	82679	PC 751	A

SCALE SHEET OF

1	ADC-5A	A5649
QTY / UNIT	MODEL USED ON	ASS'Y NO.
APPLICATION		
CODE		

UNLESS OTHERWISE SPECIFIED DIMENSIONS ARE IN INCHES AND INCLUDE CHEMICALLY APPLIED OR PLATED FINISHES		FINAL APPROVAL <i>[Signature]</i>	DATE 3/28/77
TOLERANCES ON		MECH. DES. <i>[Signature]</i>	DATE 12-2-76
DECIMALS	FRACTIONS	ELECT. DES.	DATE
.X $\pm .05$	$\pm 1/64$	CHECKED <i>[Signature]</i>	DATE 2-17-77
.XX $\pm .01$	ANGLES	DRAWN <i>[Signature]</i>	DATE 12-2-76
.XXX $\pm .005$	$\pm 0^\circ -30'$		

NOTICE TO PERSONS RECEIVING THIS DRAWING

THE TECHNICAL MATERIEL CORPORATION claims proprietary right in the material disclosed herein. This drawing is issued in confidence for engineering information only and may not be reproduced or used to manufacture anything shown hereon without permission from THE TECHNICAL MATERIEL CORPORATION to the user. This drawing is loaned for mutual assistance and is subject to recall at any time.