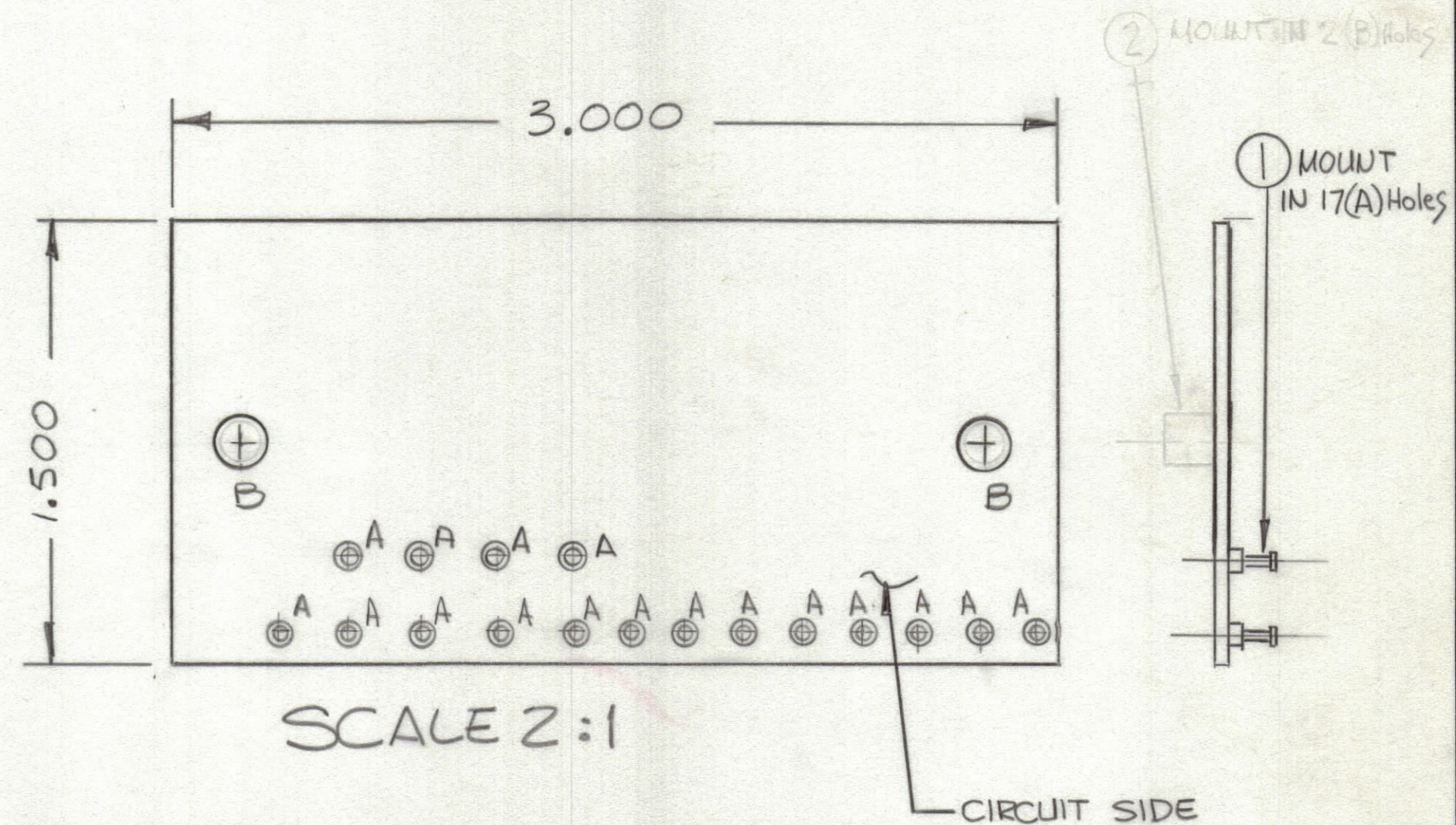
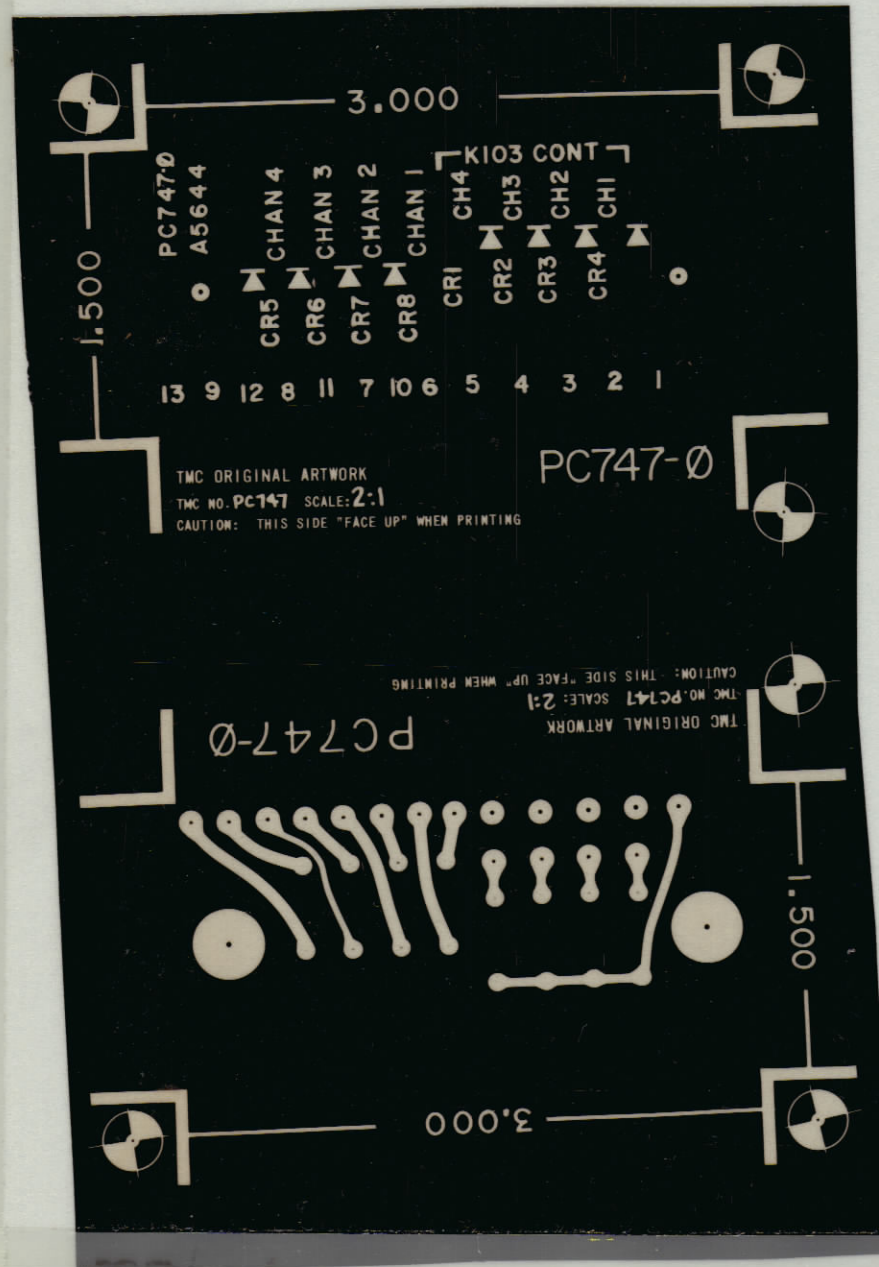


REVISIONS						
ZONE	LTR	DESCRIPTION	DATE	E.M.N.NO	DRAFT	CHKD APPD
	①	ORIGINAL RELEASE FOR PRODUCTION	5-13-77			hcb #



HOLE	DESCRIPTION	REQ
A	.081 DIA	17
B	7/32 DIA	2
	UNMARKED .042 DIA	

THIS IS NOT ORIGINAL ARTWORK
THIS IS TO BE USED FOR REF ONLY

- TO BE MANUFACTURED IN ACCORDANCE WITH TMC SPEC S735 & SPEC.
1. OVERALL MATERIAL THICKNESS .062 ± .006 AS PER pp3-1, 3-2.
 2. CONDUCTOR PATTERN TO BE COPPER FOIL AS PER pp4-1.
 3. PLATING TO BE TIN LEAD AS PER 13-2-2, 13-2-1
 4. MATERIAL: GIO GLASS EPOXY LAMINATE 2OZ COPPER CLAD

QTY. REQ.	ITEM	PART NO.	DESCRIPTION	SYMBOL
17	1	TE127-2	TERMINAL, STUD	A

LIST OF MATERIAL

1	TMA IKC	A5644
QTY / UNIT	MODEL USED ON	ASS'Y NO.
APPLICATION		
CODE		

UNLESS OTHERWISE SPECIFIED DIMENSIONS ARE IN INCHES AND INCLUDE CHEMICALLY APPLIED OR PLATED FINISHES	FINAL APPROVAL 5/10/77	DATE
TOLERANCES ON	MECH. DES. 10-15-76	DATE
DECIMALS .X ± .05 .XX ± .01 .XXX ± .005	ELECT. DES.	DATE
FRACTIONS ± 1/64 ANGLES ± 0° -30'	CHECKED 10-15-76	DATE
MATERIAL	DRAWN 10-15-76	DATE
FINISH		

THE TECHNICAL MATERIEL CORP. MAMARONECK, NEW YORK			
PRINTED CIRCUIT BOARD DIODE SWITCHING			
SIZE	CODE IDENT. NO.	DWG NO.	ISSUE
C	82679	PC747	①
SCALE	SHEET		OF

NOTICE TO PERSONS RECEIVING THIS DRAWING
THE TECHNICAL MATERIEL CORPORATION claims proprietary right in the material disclosed hereon. This drawing is issued in confidence for engineering information only and may not be reproduced or used to manufacture anything shown hereon without permission from THE TECHNICAL MATERIEL CORPORATION to the user. This drawing is loaned for mutual assistance and is subject to recall at any time.