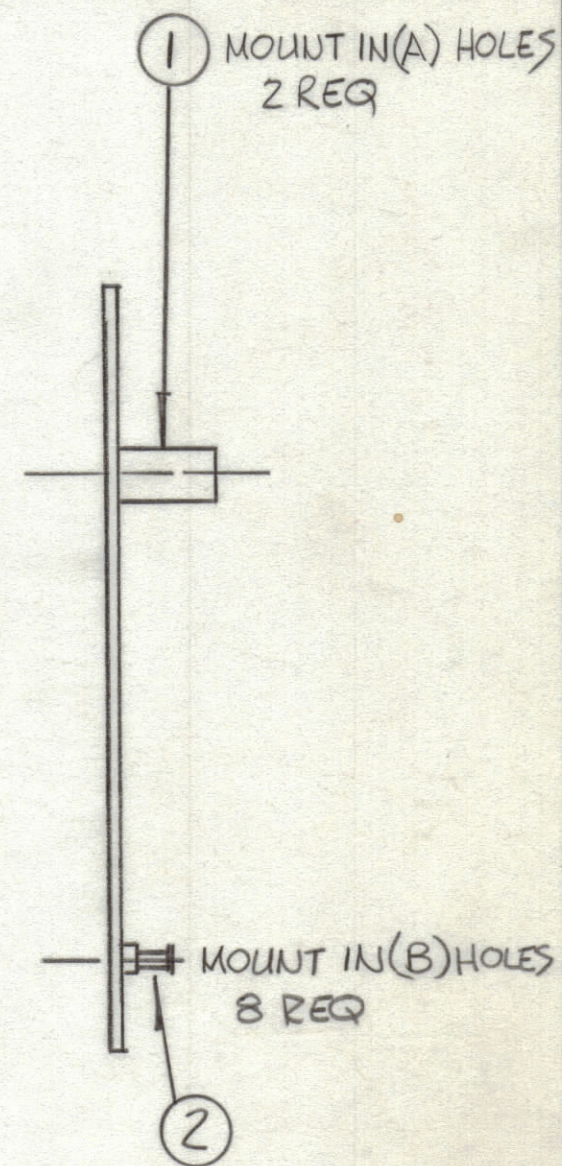
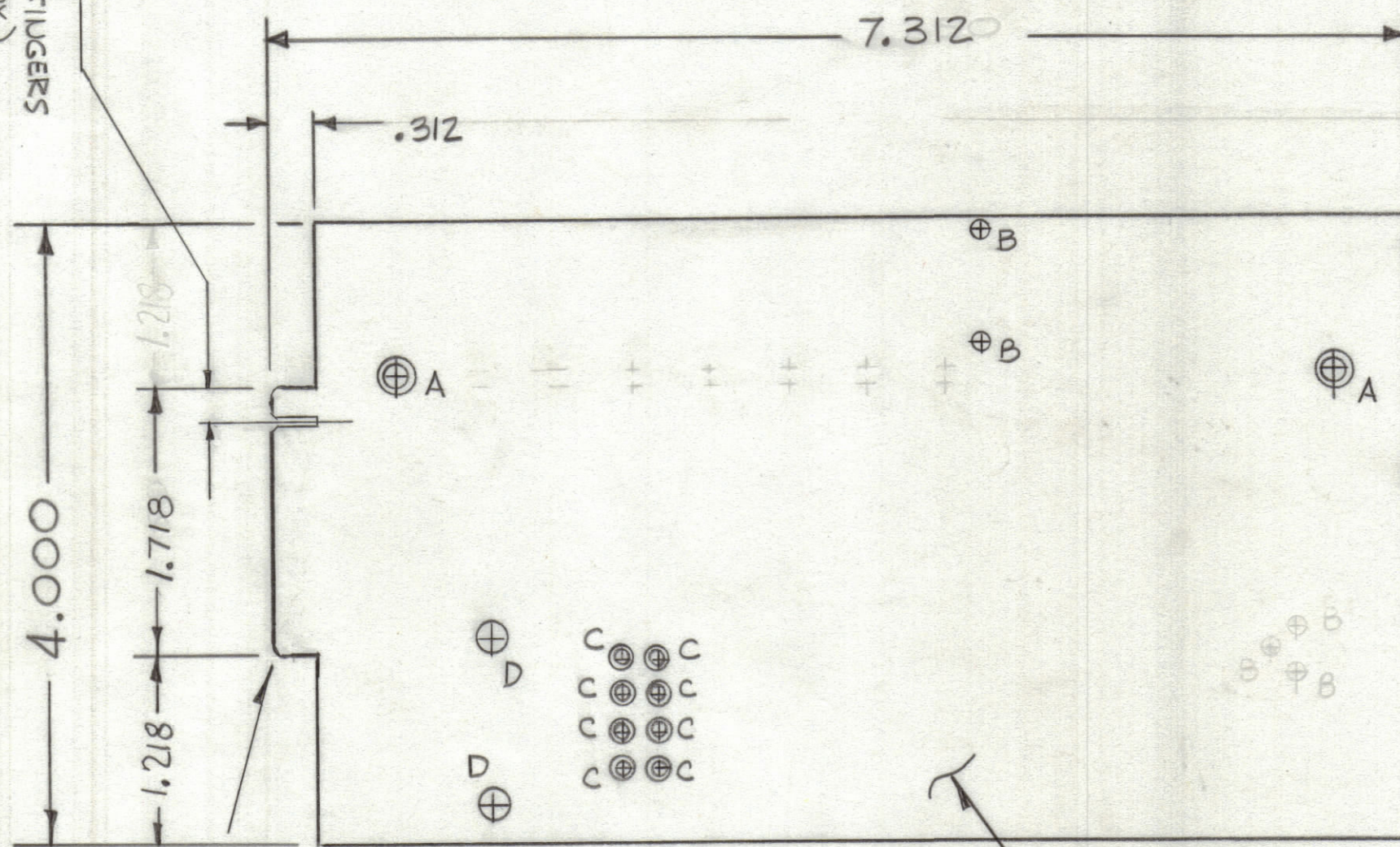


REVISIONS						
ZONE	LTR	DESCRIPTION	DATE	E.M.N.NO	DRAFT	CHKD APPD
	A	CIRCUIT REVISED, COMPONED MTG Clarified	12-14-76			
	B	SLOT INFO ADDED				
			5-13-77			

SLOT BETWEEN FIRST & SECOND FINGERS 1/16 X 5/16 (APPROX)



THIS IS NOT ORIGINAL ARTWORK  
THIS IS TO BE USED FOR REF ONLY

- TO BE MANUFACTURED IN ACCORDANCE WITH TMC SPEC 5735 & SPEC.
- OVERALL MATERIAL THICKNESS .062 ± .006 AS PER pp 3.1, 3.2
  - CONDUCTOR PATTERN TO BE COPPER FOIL AS PER pp 4.1 PLATING TO BE TIN LEAD AS PER pp 13.2.2, 13.2.1
  - MATERIAL: GIO GLASS EPOXY, LAMINATE 2 OZ COPPER CLAD
  - EDGE BOARD CONNECTOR FINGERS SHALL BE GOLD PLATED AS PER pp 10

HOLE	DESCRIPTION	REQ
A	.189 DIA	2
B	.062 DIA	2
C	.081 DIA	8
D	3/16 DIA	2
	UNMARKED .042 DIA	

QTY. REQ.	ITEM	PART NO.	DESCRIPTION	SYMBOL
8	2	TE127-2	TERMINAL, STUD	B
2	1	TE108-19	TERMINAL, STANDOFF	A

LIST OF MATERIAL

UNLESS OTHERWISE SPECIFIED DIMENSIONS ARE IN INCHES AND INCLUDE CHEMICALLY APPLIED OR PLATED FINISHES	FINAL APPROVAL <i>[Signature]</i>	DATE 4/11/77
TOLERANCES ON DECIMALS .X ± .05 .XX ± .01 .XXX ± .005 FRACTIONS ± 1/64 ANGLES ± 0° -30'	MECH. DES. <i>[Signature]</i>	DATE 10-13-76
	ELECT. DES.	DATE
	CHECKED <i>[Signature]</i>	DATE 10-13-76
	DRAWN <i>[Signature]</i>	DATE 10-13-76

THE TECHNICAL MATERIEL CORP.  
MAMARONECK, NEW YORK

PRINTED CIRCUIT BD  
INDICATORS & ADJUSTS

SIZE	CODE IDENT. NO.	DWG NO.	ISSUE
C	82679	PC746	B

SCALE SHEET OF

1	TMA/KC	A5643
QTY / UNIT	MODEL USED ON	ASS'Y NO.
APPLICATION		
CODE		
NOTICE TO PERSONS RECEIVING THIS DRAWING THE TECHNICAL MATERIEL CORPORATION claims proprietary right in the material disclosed hereon. This drawing is issued in confidence for engineering information only and may not be reproduced or used to manufacture anything shown hereon without permission from THE TECHNICAL MATERIEL CORPORATION to the user. This drawing is loaned for mutual assistance and is subject to recall at any time.		