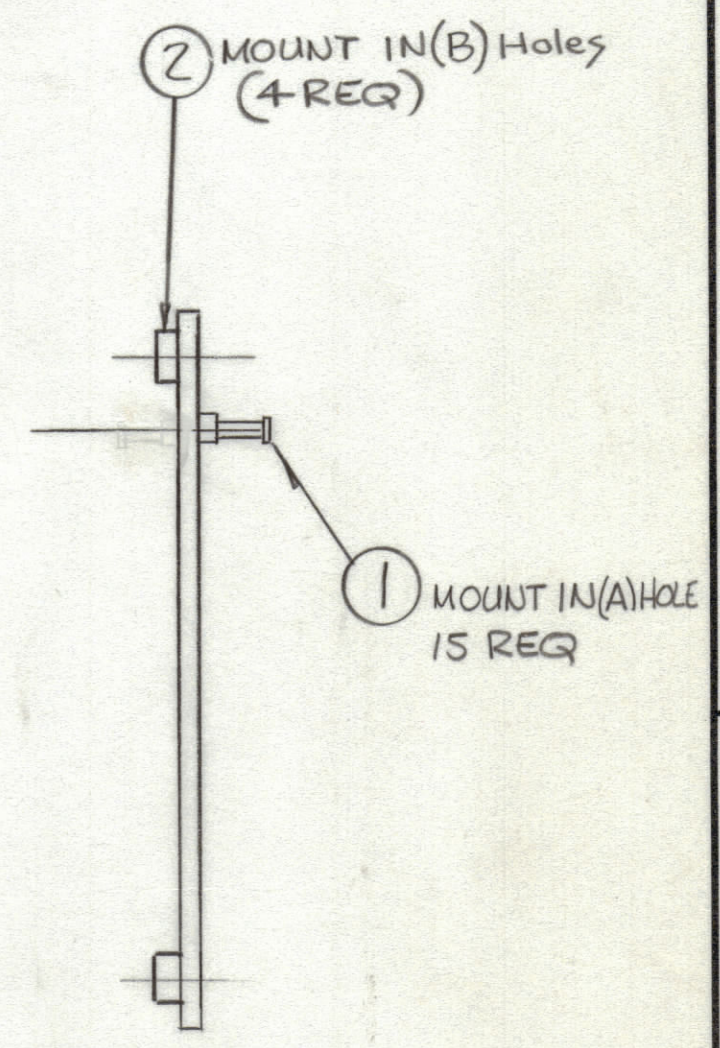
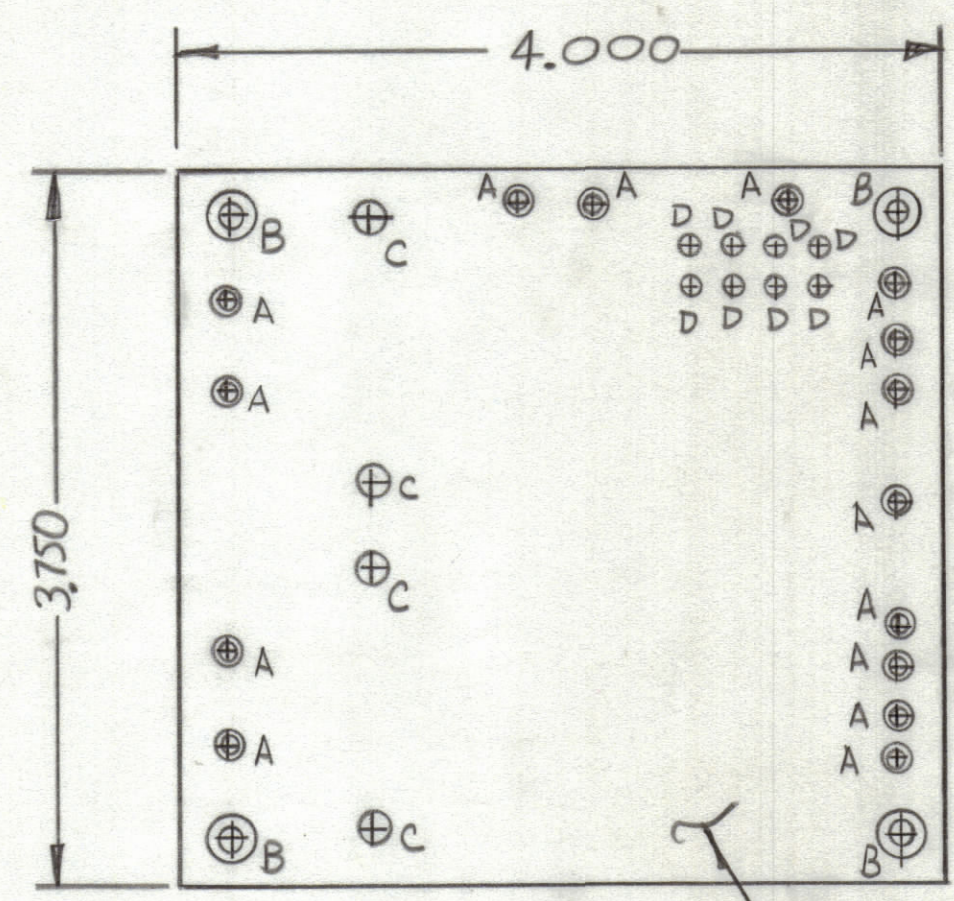


REVISIONS						
ZONE	LTR	DESCRIPTION	DATE	E.M.N.NO	DRAFT	CHKD APPD
	Ø	ORIGINAL RELEASE FOR PRODUCTION	10-27-76			R. U. <i>[Signature]</i> K. P.



THIS IS NOT ORIGINAL ARTWORK
THIS IS TO BE USED FOR REF ONLY

TO BE MANUFACTURED IN ACCORDANCE WITH TMC SPEC S735 & SPEC

- OVERALL MATERIAL THICKNESS .062 ± .006 AS PER PP3.1, 3.2.
- CONDUCTOR PATTERN TO BE COPPER FOIL AS PER PP4.1.
- MATERIAL: G10 GLASS EPOXY, LAMINATE 2 OZ COPPER CLAD. PLATING TO BE TIN LEAD AS PER 13.2.2, 13.2.1

HOLE	DESCRIPTION	REQ
A	.081 DIA	15
B	.189 DIA	4
C	3/16 DIA	4
D	.062 DIA	8
	UNMARKED .042 DIA	

QTY. REQ.	ITEM	PART NO.	DESCRIPTION	SYMBOL
4	2	TE164-1	TERMINAL	B
15	1	TE127-2	TERMINAL, STUD	A

LIST OF MATERIAL

1	HYB-3 (SYM 5203)	A5642
QTY / UNIT	MODEL USED ON	ASS'Y NO.
APPLICATION		
CODE		

UNLESS OTHERWISE SPECIFIED DIMENSIONS ARE IN INCHES AND INCLUDE CHEMICALLY APPLIED OR PLATED FINISHES		FINAL APPROVAL <i>[Signature]</i>	DATE 10/27/76
TOLERANCES ON		MECH. DES. <i>[Signature]</i>	DATE 10-13-76
DECIMALS .X ± .05 .XX ± .01 .XXX ± .005	FRACTIONS ± 1/64 ANGLES ± 0° -30'	ELECT. DES. <i>[Signature]</i>	DATE 10/27/76
MATERIAL		CHECKED R UZZO	DATE 10-13-76
FINISH		DRAWN <i>[Signature]</i>	DATE 10-13-76

THE TECHNICAL MATERIEL CORP.
MAMARONECK, NEW YORK

PRINTED CIRCUIT BD.
VOX CIRCUIT

SIZE	CODE IDENT. NO.	DWG NO.	ISSUE
C	82679	PC745	Ø

SCALE SHEET OF