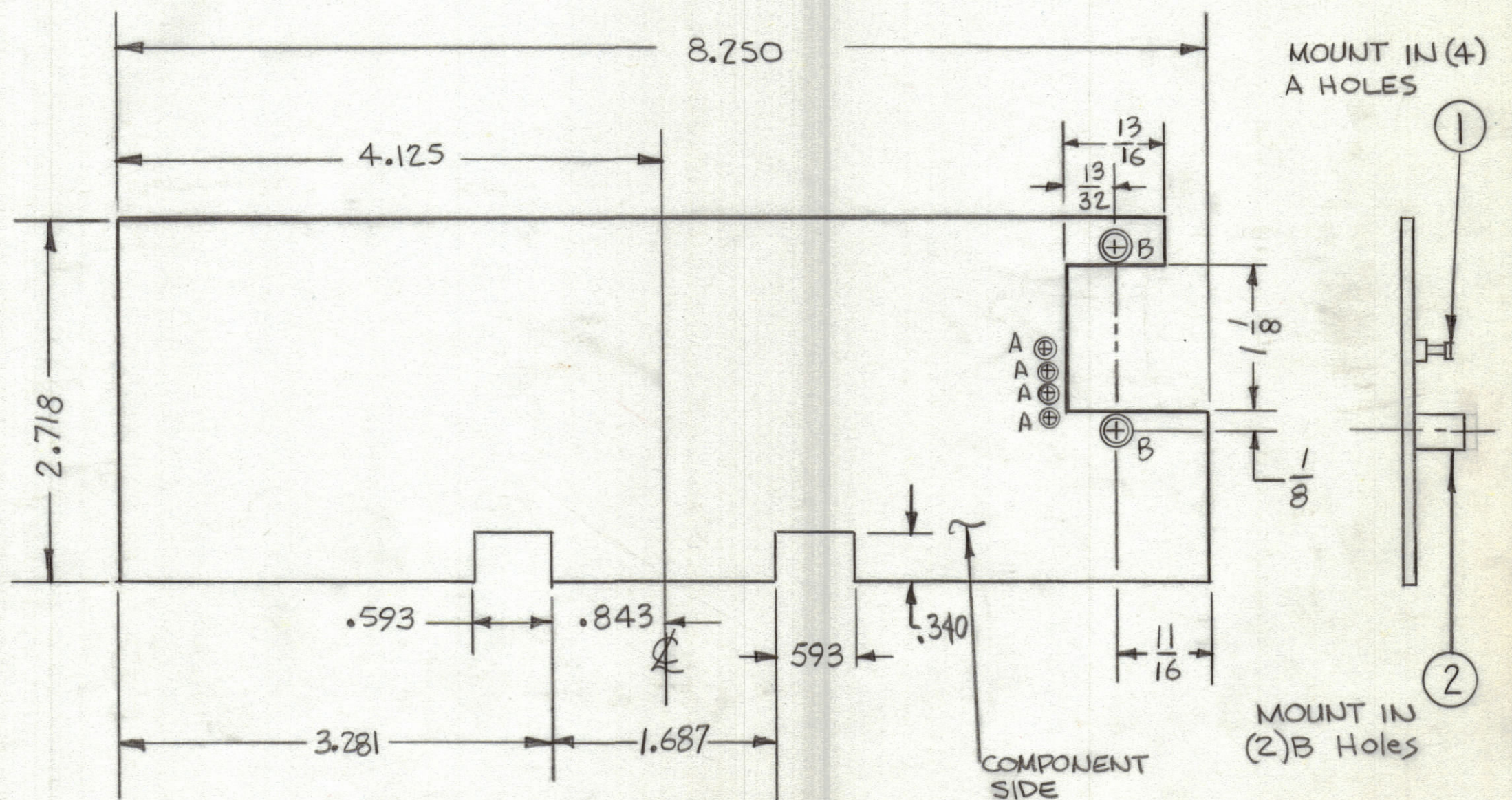


REVISIONS						
ZONE	LTR	DESCRIPTION	DATE	E.M.N.NO	DRAFT	CHKD APPD



THIS IS NOT ORIGINAL ARTWORK
THIS IS TO BE USED FOR REF ONLY

- FABRICATION NOTES:
- TO BE MANUFACTURED IN ACCORDANCE WITH TMC SPEC S735 & SPEC.
 - OVERALL MATERIAL THICKNESS .062 ± .006 AS PER (PP3.1, 3.2)
 - CONDUCTOR PATTERN TO BE COPPER FOIL AS PER (PP4.1)
PLATING TO BE TIN LEAD AS PER (PP13.2.2, 13.2.1)
 - ALL HOLES TO BE PLATED-THRU AS PER (PP 8.9.5)
 - EDGE BOARD CONNECTOR FINGERS SHALL BE GOLD PLATED (PP10)
 - MATERIAL: GIO GLASS EPOXY, LAMINATE 2 OZ COPPER CLAD, BOTH SIDES.

Hole	Description	Req.
A	.081 DIA	4
B	.189 DIA	2
UNMARKED HOLES .042 DIA		

REFERENCE Z105 (CK2122)

QTY. REQ.	ITEM	PART NO.	DESCRIPTION	SYMBOL
2	2	TE164-1	NUT, PLAIN, CLINCH	B
4	1	TE127-2	TERMINAL, STUD	A

1	KIT 416	A5633
1	GPR110-A	A5633
QTY / UNIT	MODEL USED ON	ASS'Y NO.
APPLICATION		
CODE		

UNLESS OTHERWISE SPECIFIED DIMENSIONS ARE IN INCHES AND INCLUDE CHEMICALLY APPLIED OR PLATED FINISHES

TOLERANCES ON

DECIMALS	FRACTIONS
.X ± .05	± 1/64
.XX ± .01	ANGLES
.XXX ± .005	± 0° -30'

FINAL APPROVAL	DATE
MECH. DES. <i>R. U.</i>	4-1-76
ELECT. DES.	DATE
CHECKED <i>R. U.</i>	4-1-76
DRAWN <i>R. U.</i>	4-1-76

THE TECHNICAL MATERIEL CORP.
MAMARONECK, NEW YORK

PRINTED CIRCUIT Bd.
MEMORY

SIZE	CODE IDENT. NO.	DWG NO.	ISSUE
C	82679	PC738	φ

SCALE SHEET OF

NOTICE TO PERSONS RECEIVING THIS DRAWING
THE TECHNICAL MATERIEL CORPORATION claims proprietary right in the material disclosed hereon. This drawing is issued in confidence for engineering information only and may not be reproduced or used to manufacture anything shown hereon without permission from THE TECHNICAL MATERIEL CORPORATION to the user. This drawing is loaned for mutual assistance and is subject to recall at any time.