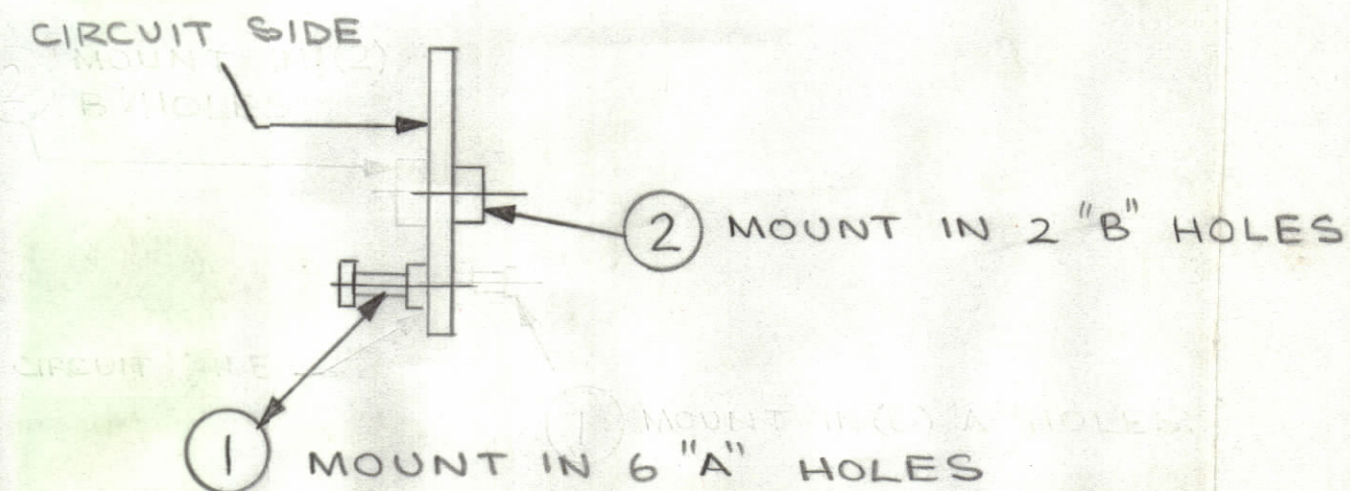
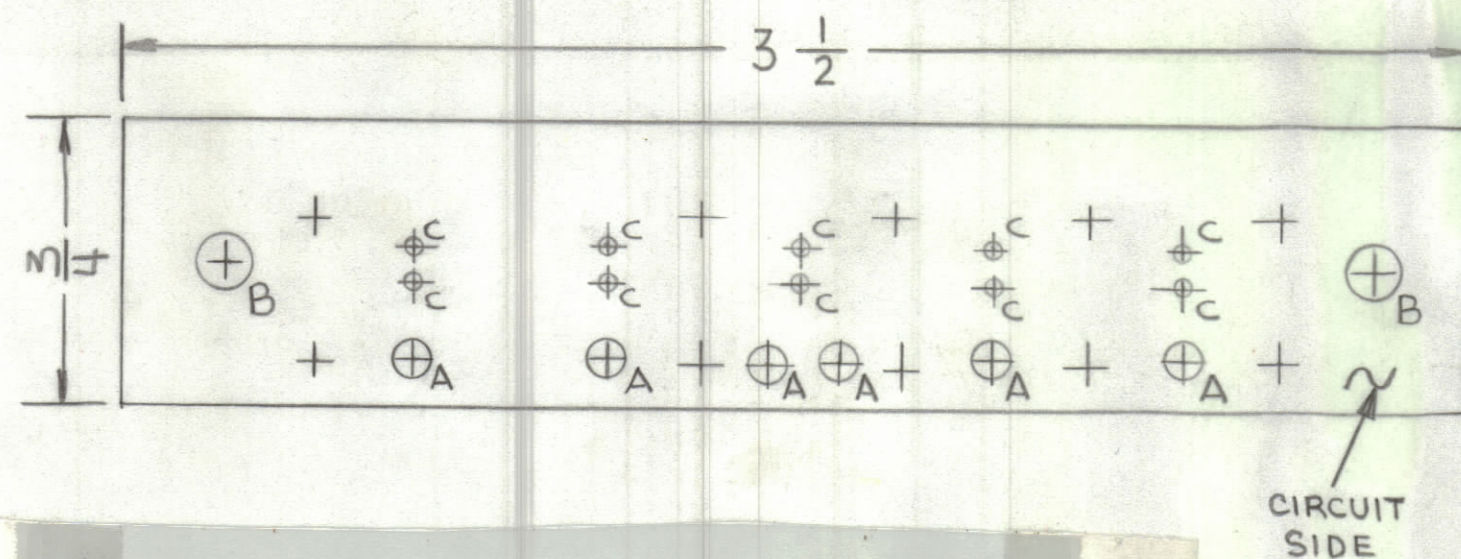
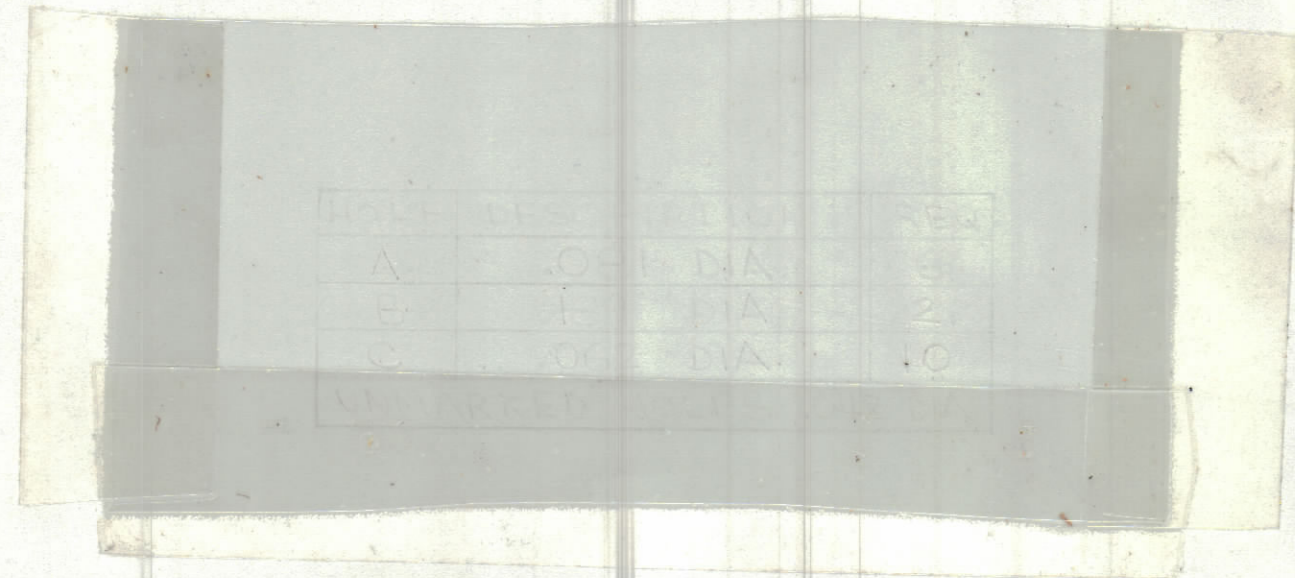


REVISIONS						
ZONE	LTR	DESCRIPTION	DATE	E.M.N.NO	DRAFT	CHKD APPD
	X	EXP. RELEASE	1-22-75		F.I.	
	Ø	ORIGINAL RELEASE FOR PRODUCTION	6-16-75		CL	



HOLE	DESCRIPTION	REQ.
A	.081 DIA.	6
B	.189 DIA.	2
C	.062 DIA.	10
ALL UNMARKED HOLES .042 DIA.		

MACHINING SCALE 2:1



THIS IS NOT ORIGINAL ARTWORK. TO BE USED FOR REFERENCE ONLY.

TO BE MANUFACTURED IN ACCORDANCE WITH TMC SPEC S735 + SPEC.

- ① OVERALL MATERIAL THICKNESS .062 ± .006 AS PER (PP3.1 PP 3.2)
- ② CONDUCTOR PATTERN TO BE FOIL AS PER (PP4.1)
PLATING TO BE TIN LEAD AS PER (PP13.22, 13.2.1)
- ③ MIN FINISHED CONDUCTOR WIDTH SHALL NOT BE LESS THAN .020.
MAX FINISHED CONDUCTOR WIDTH SHALL BE DETERMINED BY THE ARTWORK
LINE WIDTH ± .010.
- ④ MATERIAL: GIO GLASS EPOXY, LAMINATE 2 OZ COPPER CLAD, SINGLE SIDE.

QTY. REQ.	ITEM	PART NO.	DESCRIPTION	SYMBOL
2	2	TE164-6	TERMINAL, STANDOFF	
6	1	TE127-2	TERMINAL, STUD	

LIST OF MATERIAL

UNLESS OTHERWISE SPECIFIED DIMENSIONS ARE IN INCHES AND INCLUDE CHEMICALLY APPLIED OR PLATED FINISHES		FINAL APPROVAL <i>F. Iannuzzi</i>	DATE 5/27/75
TOLERANCES ON		MECH. DES. F. IANNUZZI	DATE 1-22-75
DECIMALS .X ± .05 .XX ± .01 .XXX ± .005	FRACTIONS ± 1/64 ANGLES ± 0° -30'	ELECT. DES.	DATE
MATERIAL		CHECKED	DATE
FINISH		DRAWN FIANNUZZI	DATE 1-22-75

THE TECHNICAL MATERIEL CORP.
MAMARONECK, NEW YORK

PRINTED CIRCUIT BD.
INDICATOR CIRCUIT

1	AX5189	A5616
QTY / UNIT	MODEL USED ON	ASS'Y NO.
APPLICATION		
CODE		
<p>NOTICE TO PERSONS RECEIVING THIS DRAWING</p> <p>THE TECHNICAL MATERIEL CORPORATION claims proprietary right in the material disclosed herein. This drawing is issued in confidence for engineering information only and may not be reproduced or used to manufacture anything shown hereon without permission from THE TECHNICAL MATERIEL CORPORATION to the user. This drawing is loaned for mutual assistance and is subject to recall at any time.</p>		

SIZE	CODE IDENT.NO.	DWG NO.	ISSUE
C	82679	PC725	Ø
SCALE	2:1		SHEET OF