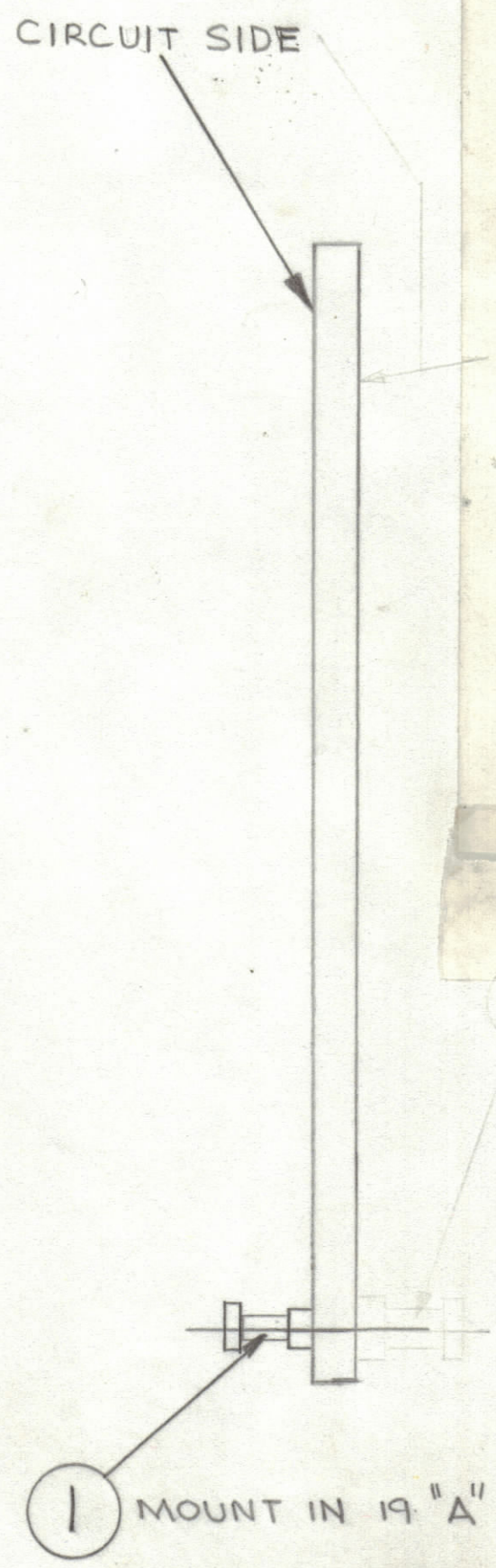
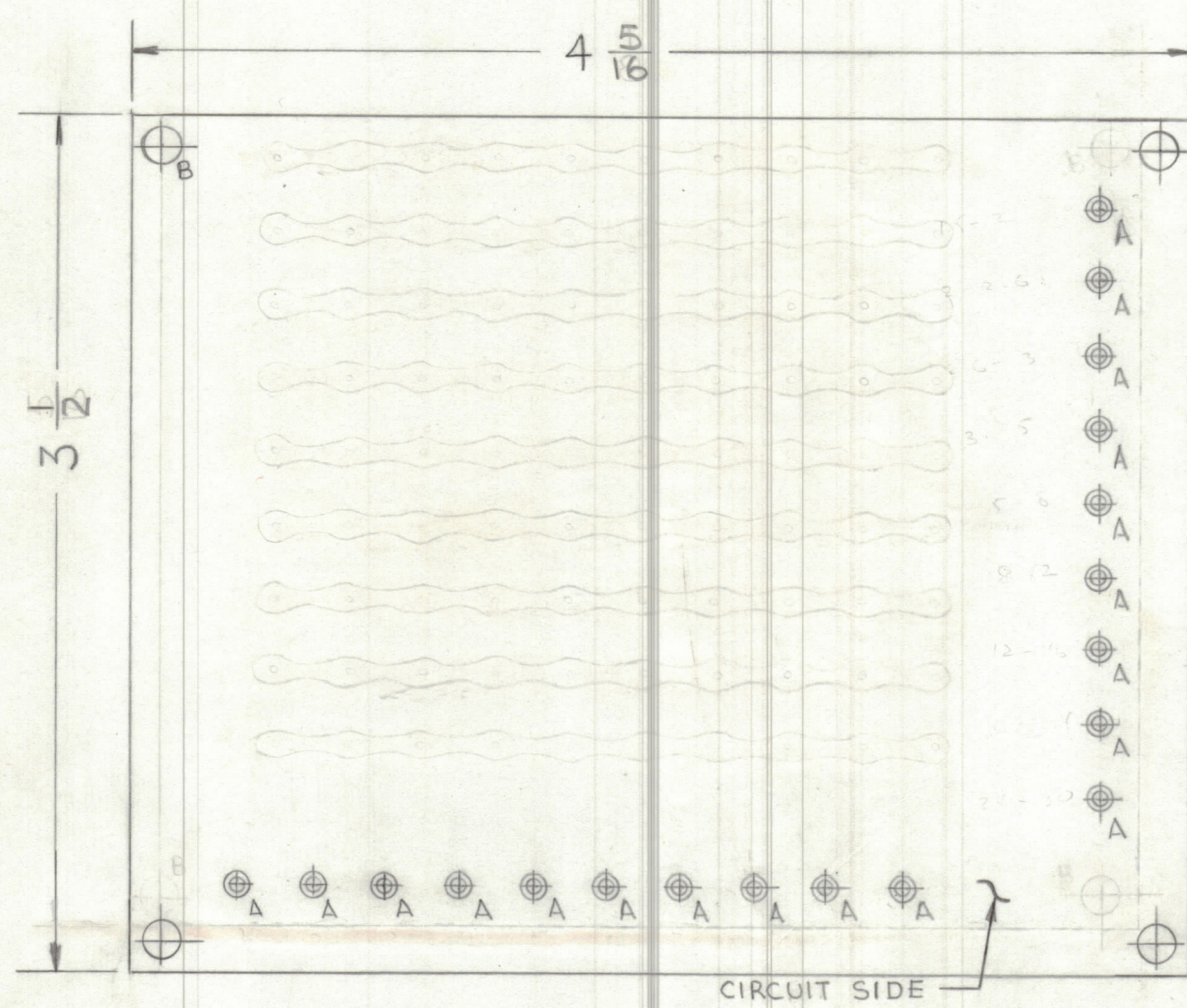


REVISIONS							
ZONE	LTR	DESCRIPTION	DATE	E.M.N.NO	DRAFT	CHKD	APPD
	0	ORIGINAL RELEASE FOR PRODUCTION	1-13-78				

THIS IS NOT ORIGINAL ARTWORK
TO BE USED FOR REFERENCE ONLY



HOLE DESCRIPTION	REQ
A .081 DIA.	
B 11/64 DIA.	
UNMARKED HOLES .042	

MACHINING SCALE 2:1

1	SMER-3	A5615
QTY / UNIT	MODEL USED ON	ASS'Y NO.
APPLICATION		
CODE		

NOTICE TO PERSONS RECEIVING THIS DRAWING
THE TECHNICAL MATERIEL CORPORATION claims proprietary right in the material disclosed hereon. This drawing is issued in confidence for engineering information only and may not be reproduced or used to manufacture anything shown hereon without permission from THE TECHNICAL MATERIEL CORPORATION to the user. This drawing is loaned for mutual assistance and is subject to recall at any time.

UNLESS OTHERWISE SPECIFIED
DIMENSIONS ARE IN INCHES
AND INCLUDE CHEMICALLY APPLIED
OR PLATED FINISHES

TOLERANCES ON

DECIMALS	FRACTIONS
.X ± .05	± 1/64
.XX ± .01	ANGLES
.XXX ± .005	± 0° -30'

19	1	TE127-2	TERMINAL, STUD	A
QTY. REQ.	ITEM	PART NO.	DESCRIPTION	SYMBOL
LIST OF MATERIAL				
FINAL APPROVAL <i>[Signature]</i> DATE 1/13/78				
MECH. DES. F. IANNUZZI DATE 1-13-75				
ELECT. DES. DATE				
CHECKED DATE				
DRAWN F. IANNUZZI DATE 1-9-75				
THE TECHNICAL MATERIEL CORP. MAMARONECK, NEW YORK				
PRINTED CIRCUIT BD.				
SIZE	CODE IDENT. NO.	DWG NO.	ISSUE	
C	82679	PC 724	Ø	
SCALE	2:1	SHEET	OF	