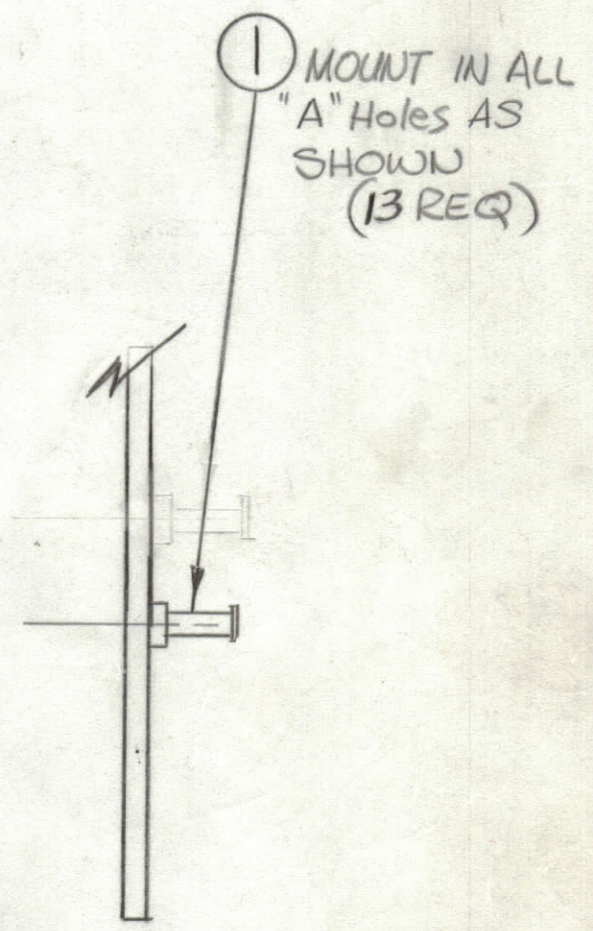
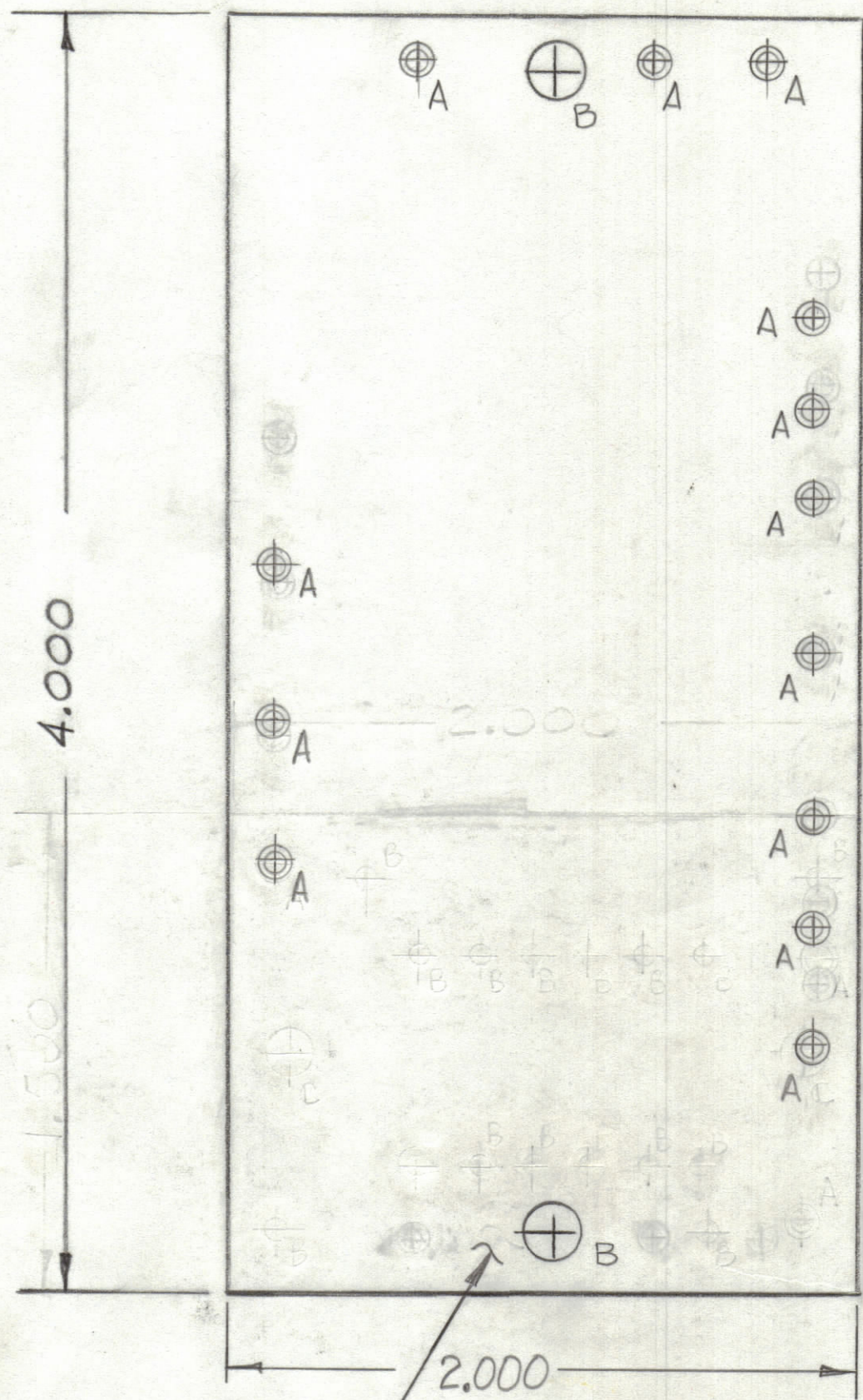
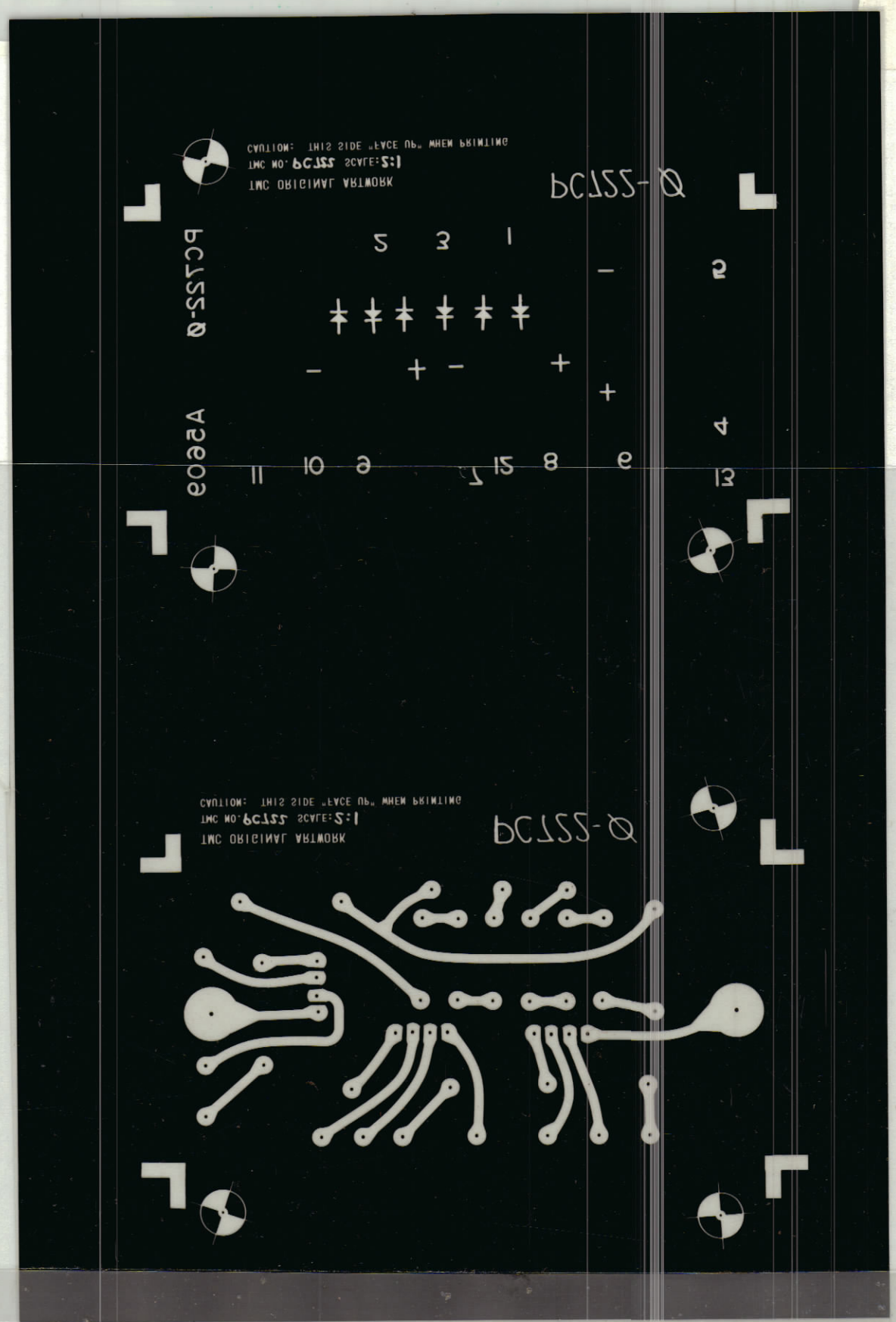


REVISIONS						
ZONE	LTR	DESCRIPTION	DATE	E.M.N.NO	DRAFT	CHKD APPD
	Ø	ORIGINAL RELEASE FOR PRODUCTION	1/2/75		CL	



Hole	Description	Req.
A	.081 DIA.	13
B	11/64 DIA.	2
C	13/64 DIA.	2
UNMARKED .062 DIA.		

MACHINING SCALE 2:1

THIS IS NOT ORIGINAL ARTWORK  
THIS IS TO BE USED FOR REF ONLY

1. OVERALL MATERIAL THICKNESS .062 ± .006 AS PER (pp 3.1, 3.2)
2. CONDUCTOR PATTERN TO BE COPPER FOIL AS PER (pp 4-1) PLATING TO BE TIN LEAD AS PER (pp 13.2.2, 13.2.1)
3. MATERIAL G10 GLASS EPOXY, LAMINATE 2 OZ COPPER CLAD SINGLE SIDE
4. MARK COMPONENT SIDE BLACK GOTHIC, SIZE AND LOCATION AS SHOWN.

QTY / UNIT	MODEL USED ON	ASS'Y NO.
1	HFL100	A5609
APPLICATION		
CODE		

NOTICE TO PERSONS RECEIVING THIS DRAWING  
THE TECHNICAL MATERIEL CORPORATION claims proprietary right in the material disclosed herein. This drawing is issued in confidence for engineering information only and may not be reproduced or used to manufacture anything shown hereon without permission from THE TECHNICAL MATERIEL CORPORATION to the user. This drawing is loaned for mutual assistance and is subject to recall at any time.

QTY. REQ.	ITEM	PART NO.	DESCRIPTION	SYMBOL
13	1	TE127-2	TERMINAL, STUD	A

LIST OF MATERIAL

THE TECHNICAL MATERIEL CORP. MAMARONECK, NEW YORK			
PRINTED CIRCUIT BD. D.C. RECTIFIER			
SIZE	CODE IDENT.NO.	DWG NO.	ISSUE
C	82679	PC722	Ø
SCALE			SHEET OF