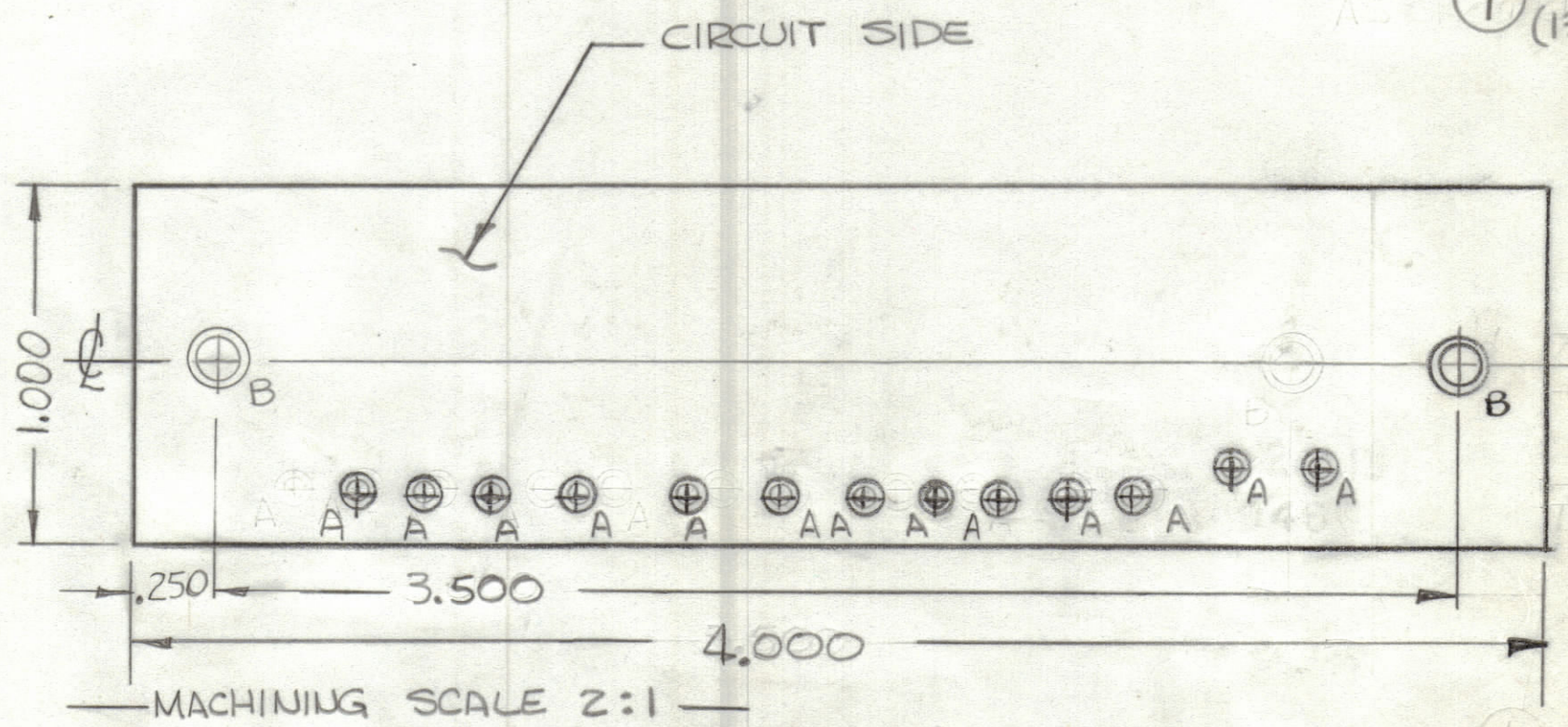
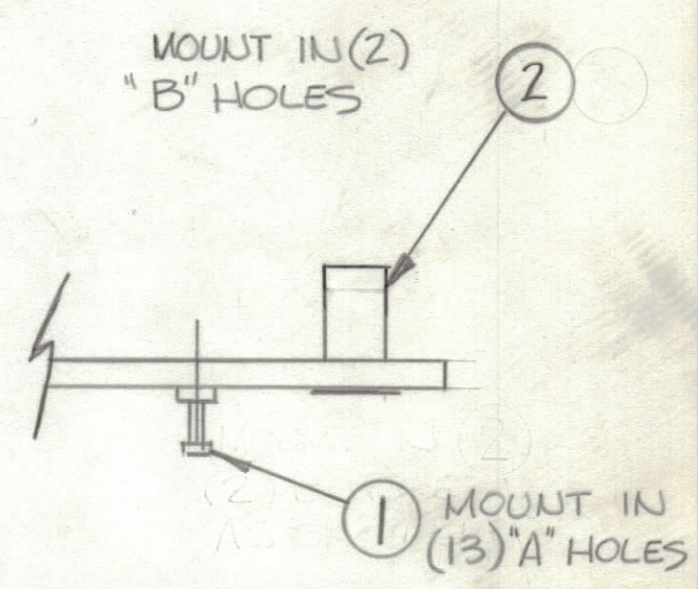


REVISIONS						
ZONE	LTR	DESCRIPTION	DATE	E.M.N.NO	DRAFT	CHKD APPD
	Ø	ORIGINAL RELEASE FOR PRODUCTION	8/24/73		CL	
A		ITEM 2 WAS TE164-6	6-30-76	21424	GDL	982 KP



Hole	DESCRIPTION	Req
A	.081 DIA	13
B	.189 DIA	2
UNMARKED HOLES .05Z		

THIS IS NOT ORIGINAL ARTWORK
THIS IS TO BE USED FOR REF ONLY

FABRICATION NOTES:
TO BE MANUFACTURED IN ACCORDANCE WITH TMC SPEC S735 & SPECIFICALLY
1. OVERALL MATERIAL THICKNESS $.062 \pm .006$ AS PER pp3.1, 3.2
2. CONDUCTOR PATTERN TO BE COPPER FOIL AS PER pp4.1
PLATING TO BE TIN LEAD AS PER pp13.2.2, 13.2.1
3. MATERIAL TO BE G10 GLASS EPOXY, LAMINATE 2 OZ COPPER
SINGLE SIDE.

(REF SYMBOL A106)

QTY. REQ.	ITEM	PART NO.	DESCRIPTION	SYMBOL
2	2	TE108-1	NUT, PLAIN CLINCH	B
13	1	TE127-2	TERMINAL, STUD	A

LIST OF MATERIAL

THE TECHNICAL MATERIEL CORP.
MAMARONECK, NEW YORK

PRINTED CIRCUIT BD.
(BAND INDICATORS)

1	ATSA-3	A4946
QTY / UNIT	MODEL USED ON	ASS'Y NO.
APPLICATION		
CODE		

UNLESS OTHERWISE SPECIFIED DIMENSIONS ARE IN INCHES AND INCLUDE CHEMICALLY APPLIED OR PLATED FINISHES

TOLERANCES ON

DECIMALS	FRACTIONS
.X $\pm .05$	$\pm 1/64$
.XX $\pm .01$	ANGLES
.XXX $\pm .005$	$\pm 0^\circ -30'$

MATERIAL

FINISH

FINAL APPROVAL: [Signature] DATE: 8-6-73

MECH. DES. [Signature] DATE: 8-5-73

ELECT. DES. DATE: 8-5-73

CHECKED [Signature] DATE: 8-5-73

DRAWN [Signature] DATE: 8-5-73

SIZE	CODE IDENT.NO.	DWG NO.	ISSUE
C	82679	PC672	A
SCALE	SHEET		OF

NOTICE TO PERSONS RECEIVING THIS DRAWING

THE TECHNICAL MATERIEL CORPORATION claims proprietary right in the material disclosed hereon. This drawing is issued in confidence for engineering information only and may not be reproduced or used to manufacture anything shown hereon without permission from THE TECHNICAL MATERIEL CORPORATION to the user. This drawing is loaned for mutual assistance and is subject to recall at any time.

PC672 A B