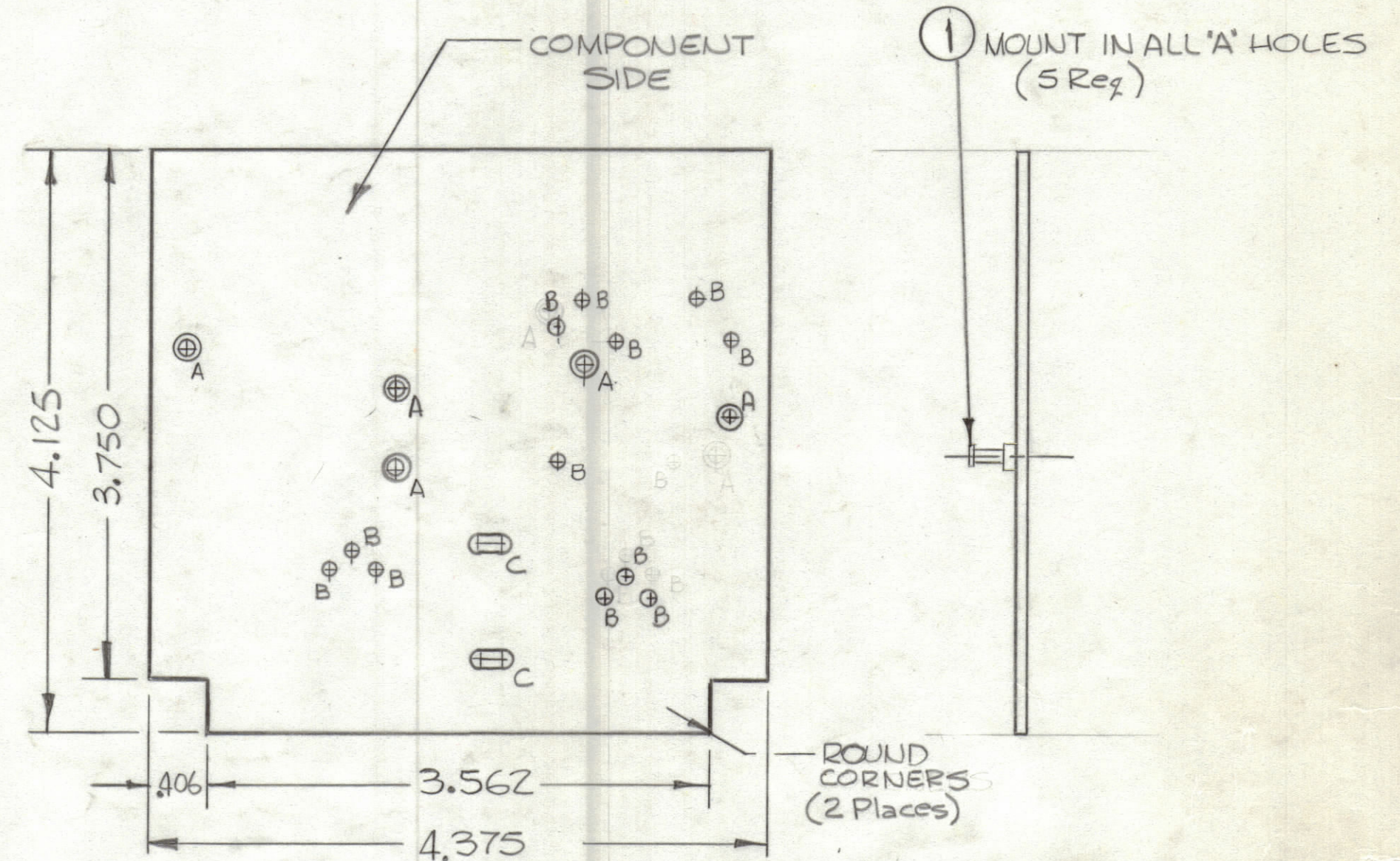


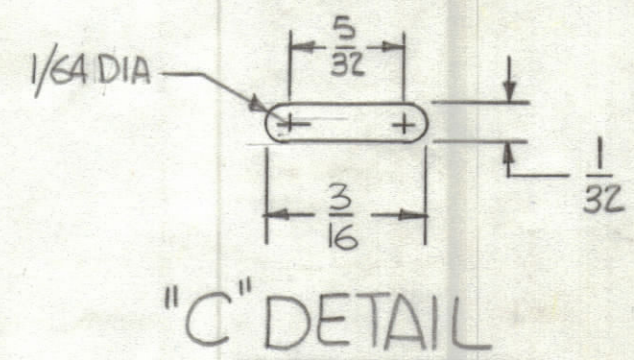
REVISIONS						
ZONE	LTR	DESCRIPTION	DATE	E.M.N.NO	DRAFT	CHKD APPD
	Ø	ORIGINAL RELEASE FOR PRODUCTION	8/24/73		CL	
	A	C14 Added	2-8-74	21125	RU	
	B	4(B) Holes Relocated, C77 Circuit Added	8-24-76	21476	RU	KP
	C	C11, C3, C4, R5, R13, C9 Deleted, Conn(B) to R26 Added	9-15-78	21506	RU	RU



Hole	Description	Req
A	.081 DIA	5
B	.062 DIA	12
C	SEE DETAIL	2
UNMARKED HOLES .042D		

THIS IS NOT ORIGINAL ARTWORK  
THIS IS TO BE USED FOR REF ONLY

- FABRICATION NOTES:  
TO BE MANUFACTURED IN ACCORDANCE WITH TMC SPEC 5735 & SPECIFICALLY
- OVERALL MATERIAL THICKNESS .062 ± .006 AS PER pp 3.1, 3.2
  - CONDUCTOR PATTERN TO BE COPPER FOIL AS PER pp 4.1  
PLATING TO BE TIU LEAD AS PER pp 13.2.2, 13.2.1
  - HOLES TO BE PLATED-THRU AS PER pp 8.9.5.
  - MATERIAL TO BE G10 GLASS EPOXY, LAMINATE  
2 OZ COPPER TWO (2) SIDES



(REF SYMBOL A102, A104)

S	QTY. REQ.	ITEM	PART NO.	DESCRIPTION	SYMBOL
5	1	TE127-2		TERMINAL, STUD	A

LIST OF MATERIAL			
SIZE	CODE	IDENT. NO.	DWG NO.
C	82679	PC663	
SCALE			SHEET OF

UNLESS OTHERWISE SPECIFIED DIMENSIONS ARE IN INCHES AND INCLUDE CHEMICALLY APPLIED OR PLATED FINISHES		FINAL APPROVAL <i>[Signature]</i>	DATE 8-6-73
TOLERANCES ON		MECH. DES. <i>[Signature]</i>	DATE 8-6-73
DECIMALS	FRACTIONS	ELECT. DES.	DATE
.X ± .05	± 1/64	CHECKED <i>[Signature]</i>	DATE 8-6-73
.XX ± .01	ANGLES	DRAWN <i>[Signature]</i>	DATE 8-6-73
.XXX ± .005	± 0° -30'		
MATERIAL			
FINISH			

Z	ATSA-3	A4936
QTY / UNIT	MODEL USED ON	ASS'Y NO.
APPLICATION		
CODE		
NOTICE TO PERSONS RECEIVING THIS DRAWING THE TECHNICAL MATERIEL CORPORATION claims proprietary right in the material disclosed herein. This drawing is issued in confidence for engineering information only and may not be reproduced or used to manufacture anything shown hereon without permission from THE TECHNICAL MATERIEL CORPORATION to the user. This drawing is loaned for mutual assistance and is subject to recall at any time.		