

REVISIONS						
ZONE	LTR	DESCRIPTION	DATE	E.M.N.NO	DRAFT	CHKD APPD
	Ø	ORIGINAL RELEASE FOR PRODUCTION	11/21/72		cl	
	A	Mounting for R1 & R2 Revised	9-30-73	20985	RA	

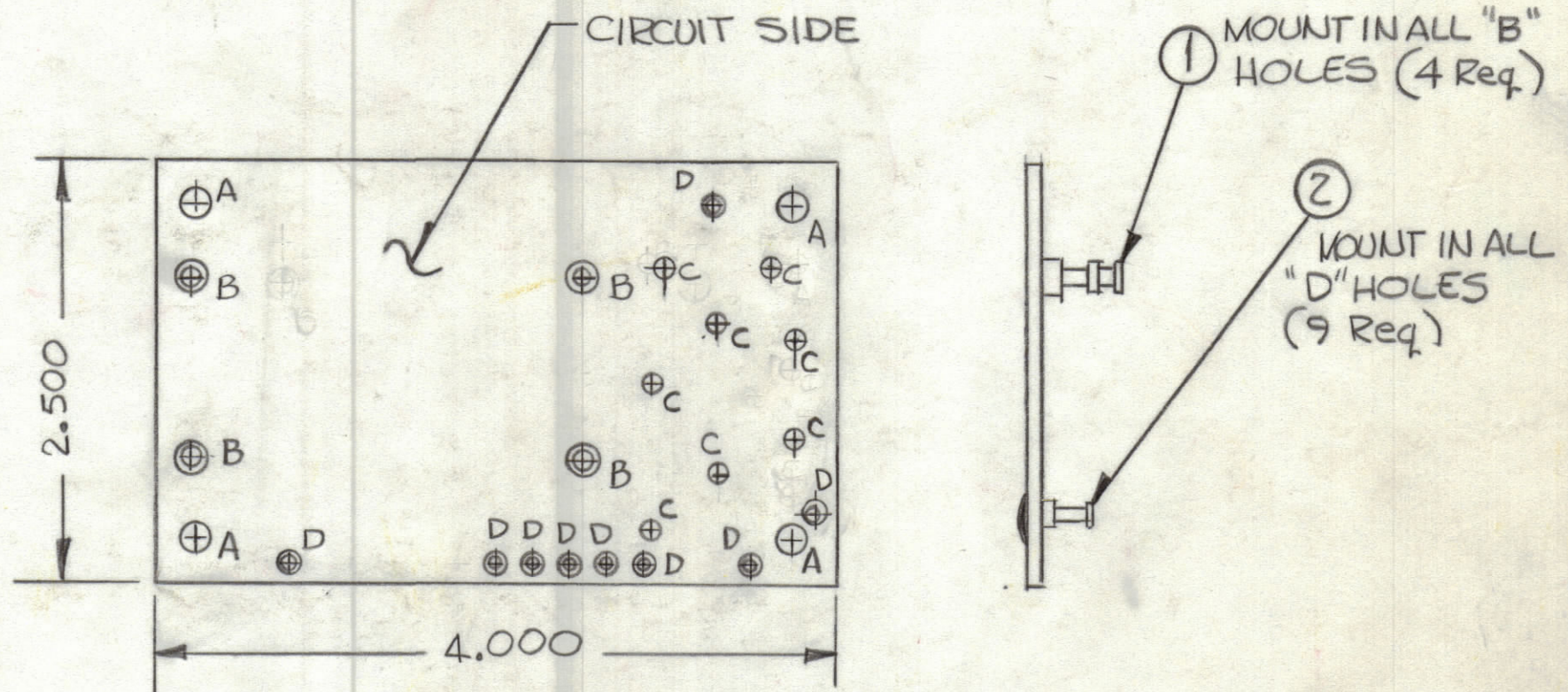


THIS IS NOT ORIGINAL ARTWORK
THIS IS TO BE USED FOR REF ONLY

FABRICATION NOTES

TO BE MANUFACTURED IN ACCORDANCE WITH TMC SPEC S735 & SPEC

1. OVERALL MATERIAL THICKNESS $.062 \pm .006$ AS PER PP3.1, 3.2
2. CONDUCTOR PATTERN TO BE COPPER FOIL AS PER PP4.1
PLATING TO BE TIN LEAD AS PER PP13.2.2, 13.2.1
3. MATERIAL TO BE GIO GLASS EPOXY, LAMINATE 2 OZ COPPER,
SINGLE SIDE



HOLE	DESCRIPTION	REQ
A	9/64 DIA	4
B	.147 DIA	4
C	.062 DIA	8
D	.081 DIA	9
UNMARKED HOLES .042 DIA		

QTY. REQ.	ITEM	PART NO.	DESCRIPTION	SYMBOL
9	2	TE127-2	TERMINAL, STUD	D
4	1	TE127-9	TERMINAL, STUD	B

LIST OF MATERIAL

UNLESS OTHERWISE SPECIFIED DIMENSIONS ARE IN INCHES AND INCLUDE CHEMICALLY APPLIED OR PLATED FINISHES		FINAL APPROVAL <i>[Signature]</i>	DATE 11/17/72
TOLERANCES ON		MECH. DES. <i>[Signature]</i>	DATE
DECIMALS	FRACTIONS	ELECT. DES.	DATE
.X ± .05	± 1/64	CHECKED	DATE
.XX ± .01	ANGLES	DRAWN <i>[Signature]</i>	DATE
.XXX ± .005	± 0° -30'		

THE TECHNICAL MATERIEL CORP.
MAMARONECK, NEW YORK

PRINTED CIRCUIT BD.
(POWER SUPPLY)

QTY / UNIT	RSU-1	A4926
	MODEL USED ON	ASS'Y NO.
APPLICATION		
	CODE	

NOTICE TO PERSONS RECEIVING THIS DRAWING
THE TECHNICAL MATERIEL CORPORATION claims proprietary right in the material disclosed hereon. This drawing is issued in confidence for engineering information only and may not be reproduced or used to manufacture anything shown hereon without permission from THE TECHNICAL MATERIEL CORPORATION to the user. This drawing is loaned for mutual assistance and is subject to recall at any time.

SIZE	CODE IDENT.NO.	DWG NO.	ISSUE
C	82679	PC651	A
SCALE		SHEET	OF