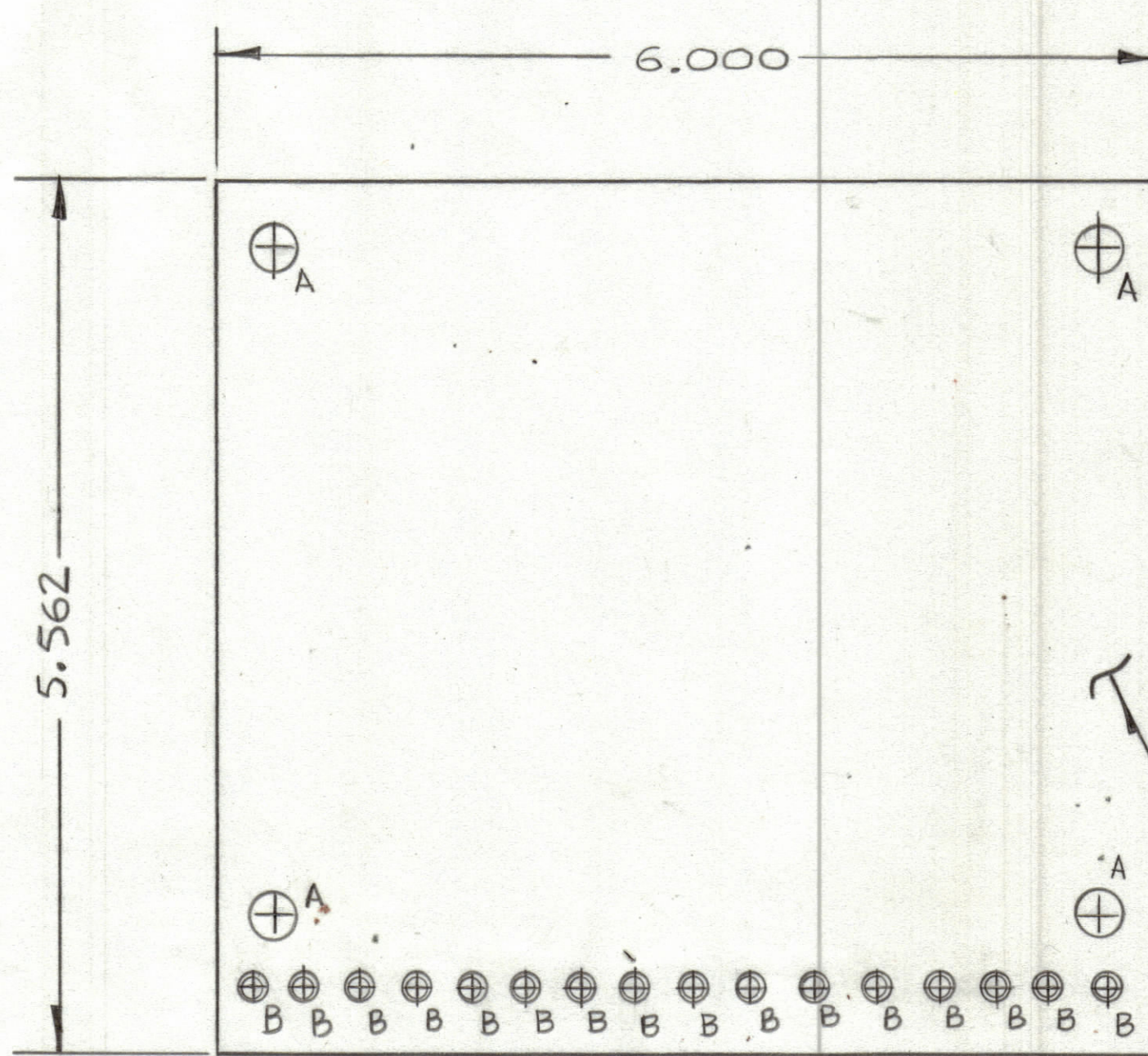


REVISIONS						
ZONE	LTR	DESCRIPTION	DATE	E.M.N.NO	DRAFT	CHKD APPD



NOTE:  
FABRICATION NOTES SEE S735.

- OVERALL MATERIAL THICKNESS  $.062 \pm .006$  AS PER pp3.1, 3.2.
- CONDUCTOR PATTERN TO BE COPPER FOIL AS PER pp4.1.
- MATERIAL: GIO GLASS EPOXY LAMINATE 2 OZ COPPER CLAD. (SINGLE SIDE)

Hole	Description	Req.
A	11/64 DIA.	4
B	.081 DIA	16
Unmarked Holes .042 DIA.		

QTY. REQ.	ITEM	PART NO.	DESCRIPTION	SYMBOL
16	1	TE127-2	TERMINAL STUD	

LIST OF MATERIAL

**THE TECHNICAL MATERIEL CORP.**  
MAMARONECK, NEW YORK

PRINTED CIRCUIT Bd.

QTY / UNIT	MODEL USED ON	A490Z	ASS'Y NO.
APPLICATION			
CODE			

UNLESS OTHERWISE SPECIFIED DIMENSIONS ARE IN INCHES AND INCLUDE CHEMICALLY APPLIED OR PLATED FINISHES

TOLERANCES ON

DECIMALS	FRACTIONS
.X $\pm .05$	$\pm 1/64$
.XX $\pm .01$	ANGLES
.XXX $\pm .005$	$\pm 0^{\circ} 30'$

FINAL APPROVAL	DATE
MECH. DES.	DATE
ELECT. DES.	DATE
CHECKED	DATE
DRAWN <i>ED</i>	DATE

NOTICE TO PERSONS RECEIVING THIS DRAWING

THE TECHNICAL MATERIEL CORPORATION claims proprietary right in the material disclosed hereon. This drawing is issued in confidence for engineering information only and may not be reproduced or used to manufacture anything shown hereon without permission from THE TECHNICAL MATERIEL CORPORATION to the user. This drawing is loaned for mutual assistance and is subject to recall at any time.

SIZE	CODE IDENT.NO.	DWG NO.	ISSUE
C	82679	PC619	X
SCALE	SHEET		OF