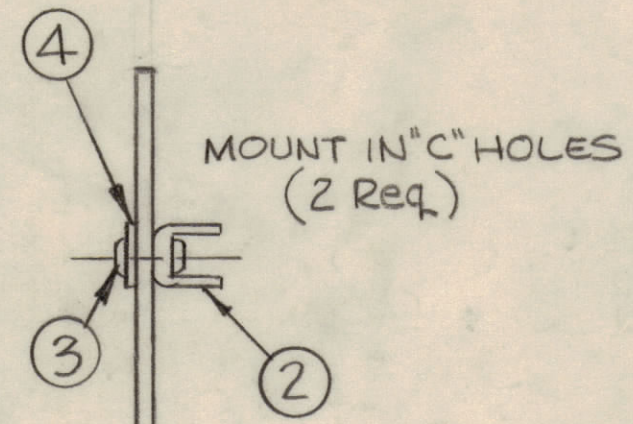
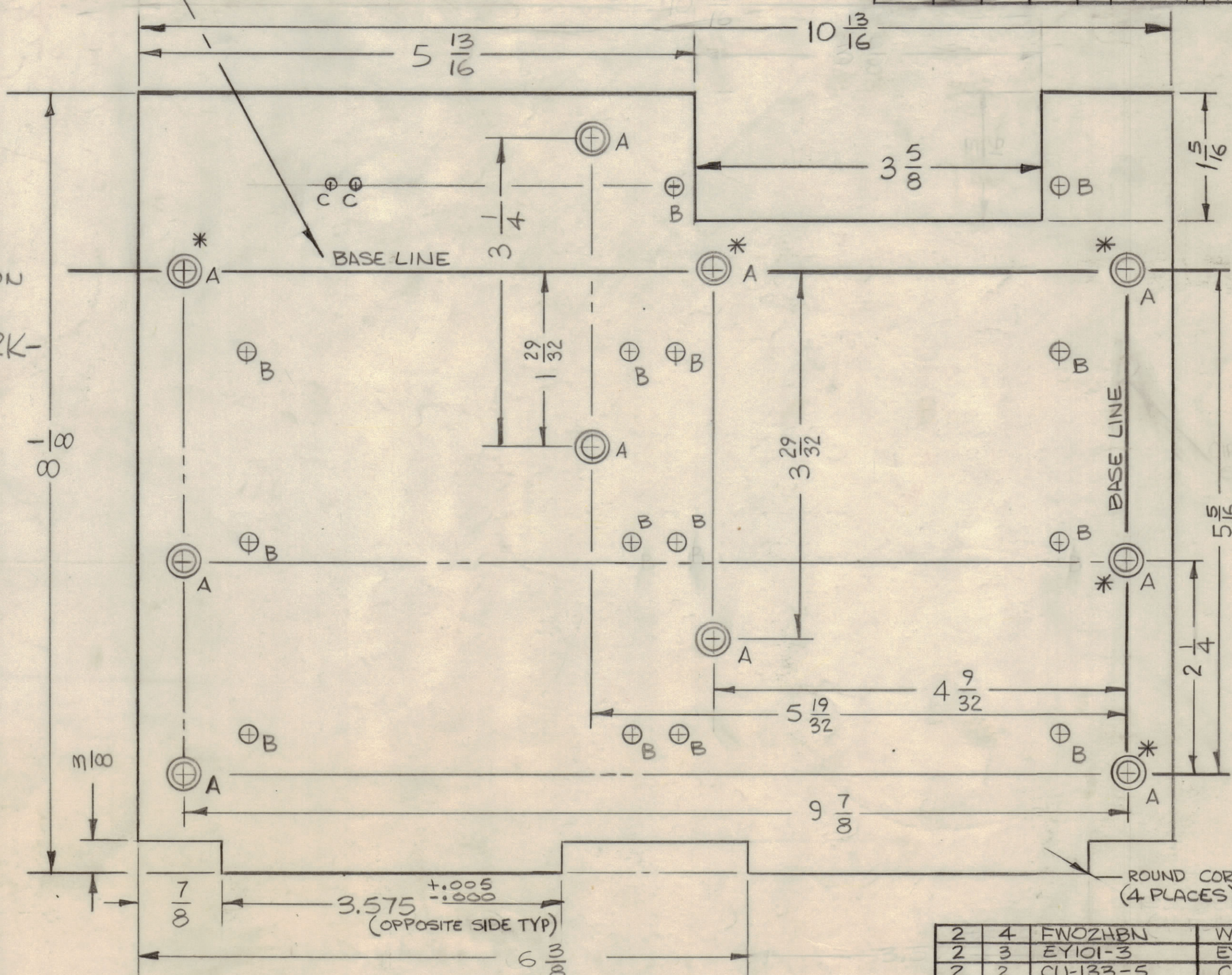


REVISIONS							
E.M.N.NO	DRAFT	CHKD	ZONE	LTR	DESCRIPTION	DATE	APPROVED
				X	EXPER Release	4-1-71	
				Ø	ORIGINAL RELEASE FOR PRODUCTION	7-6-71	
				A	LINE TO PINCH ON AX205 DELETED (NO BUH#)	7-6-71	P.E.B.
20444				B	Bd to Cust Released, Bd not Released in house Req.	9-1-71	SB
20461				C	LAND AREAS REVISED	11-4-71	SB
					Item 2,3,4 Added, LAND REVISED ON XA209	11-23-71	SB

BASELINES ARE ARTWORK PADS (MARKED *)
"A" HOLE LOCATIONS MUST BE AS PER
MACHINING DIM.

NOTE:
FULL SCALE REDUCTION
IS LOCATED WITH
MASTER ARTWORK-



FABRICATION NOTES:
TO BE MANUFACTURED IN ACCORDANCE
WITH TMC SPEC 5735 & SPECIFICALLY
1. OVERALL MAT. THK. .062 ± .0062 (pp 3.1, 3.2)
2. CONDUCTOR PATTERN COPPER FOIL (PP 4.1)
PLATING TIN LEAD (PP 13.2.1, 13.2.2)
3. HOLES TO BE PLATED-THRU (8.9.5)
4. EDGE BD. CONN (FINGERS) GOLD PLATED (PP 10)
5. MATERIAL GIG GLASS EPOXY, LAMINATE
2 OZ. COPPER CLAD, BOTH SIDES

1 MOUNT IN ALL "A" HOLES
10 Req

ROUND CORNERS
(4 PLACES)

Hole	Description	Req
A	.189 DIA	10
B	5/32 DIA.	14
C	.093 DIA	2
	UNMARKED .052 DIA	~

QTY. REQ.	ITEM	PART NO.	DESCRIPTION	SYMBOL
2	4	FWOZHBN	WASHER, FLAT	
2	3	EY101-3	EYELET, ROLLED FLANGE	
2	2	CU-133-5	CLIP, HEAT SINK	
10	1	TE108-11	TERMINAL, STANDOFF	A

LIST OF MATERIAL

1	AX5130	A4883
QTY / UNIT	MODEL USED ON	ASS'Y NO.
APPLICATION		
CODE		

NOTICE TO PERSONS RECEIVING THIS DRAWING
THE TECHNICAL MATERIEL CORPORATION claims proprietary right in the material disclosed hereon. This drawing is issued in confidence for engineering information only and may not be reproduced or used to manufacture anything shown hereon without permission from THE TECHNICAL MATERIEL CORPORATION to the user. This drawing is loaned for mutual assistance and is subject to recall at any time.

UNLESS OTHERWISE SPECIFIED
DIMENSIONS ARE IN INCHES
AND INCLUDE CHEMICALLY APPLIED
OR PLATED FINISHES

TOLERANCES ON
DECIMALS .X ± .05
.XX ± .01
.XXX ± .005
FRACTIONS ± 1/64
ANGLES ± 0° -30'

FINAL APPROVAL	DATE
MECH. DES.	DATE
ELECT. DES.	DATE
CHECKED	DATE
DRAWN	DATE

THE TECHNICAL MATERIEL CORP.
MAMARONECK, NEW YORK

PRINTED CIRCUIT Bd
(Interconnected)

SIZE	CODE IDENT NO.	DWG NO.	ISSUE
C	82679	PC604	C

SCALE SHEET OF

PC604
C
B

A