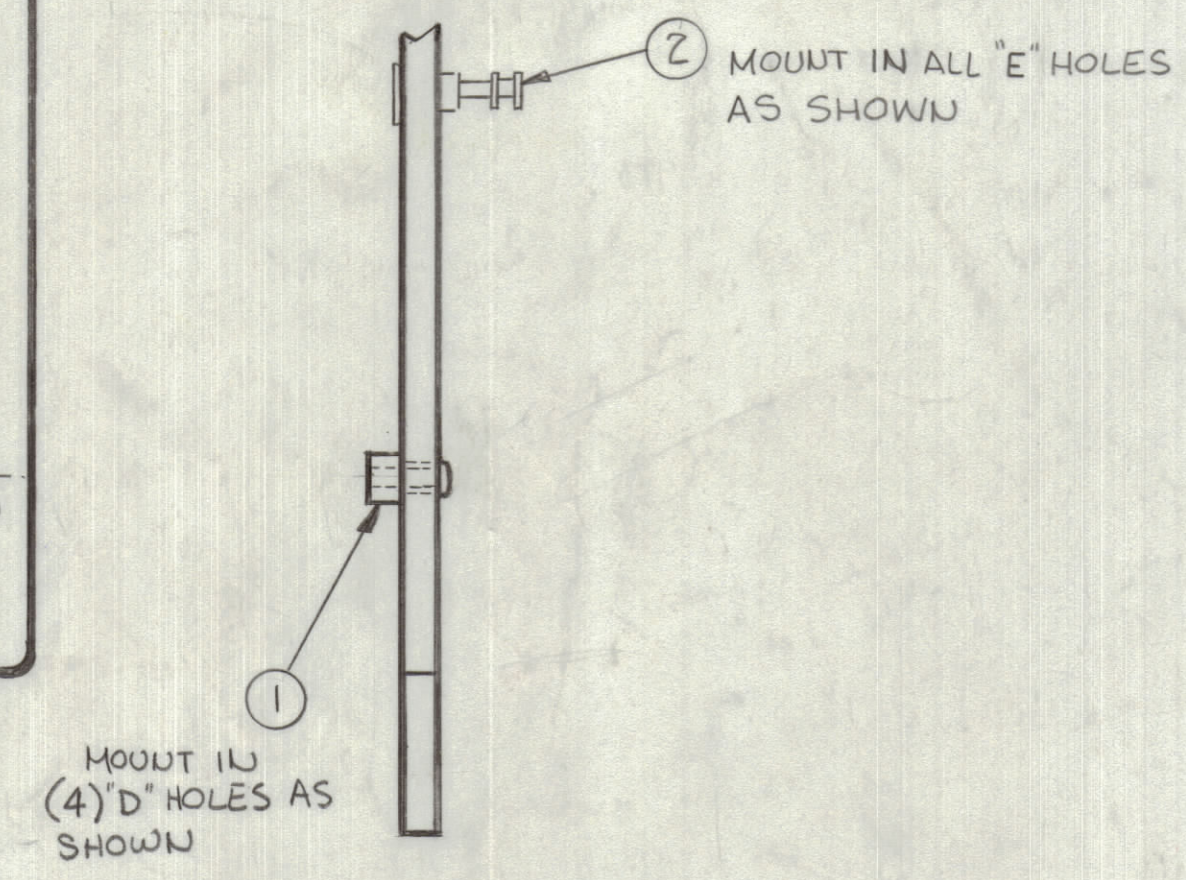
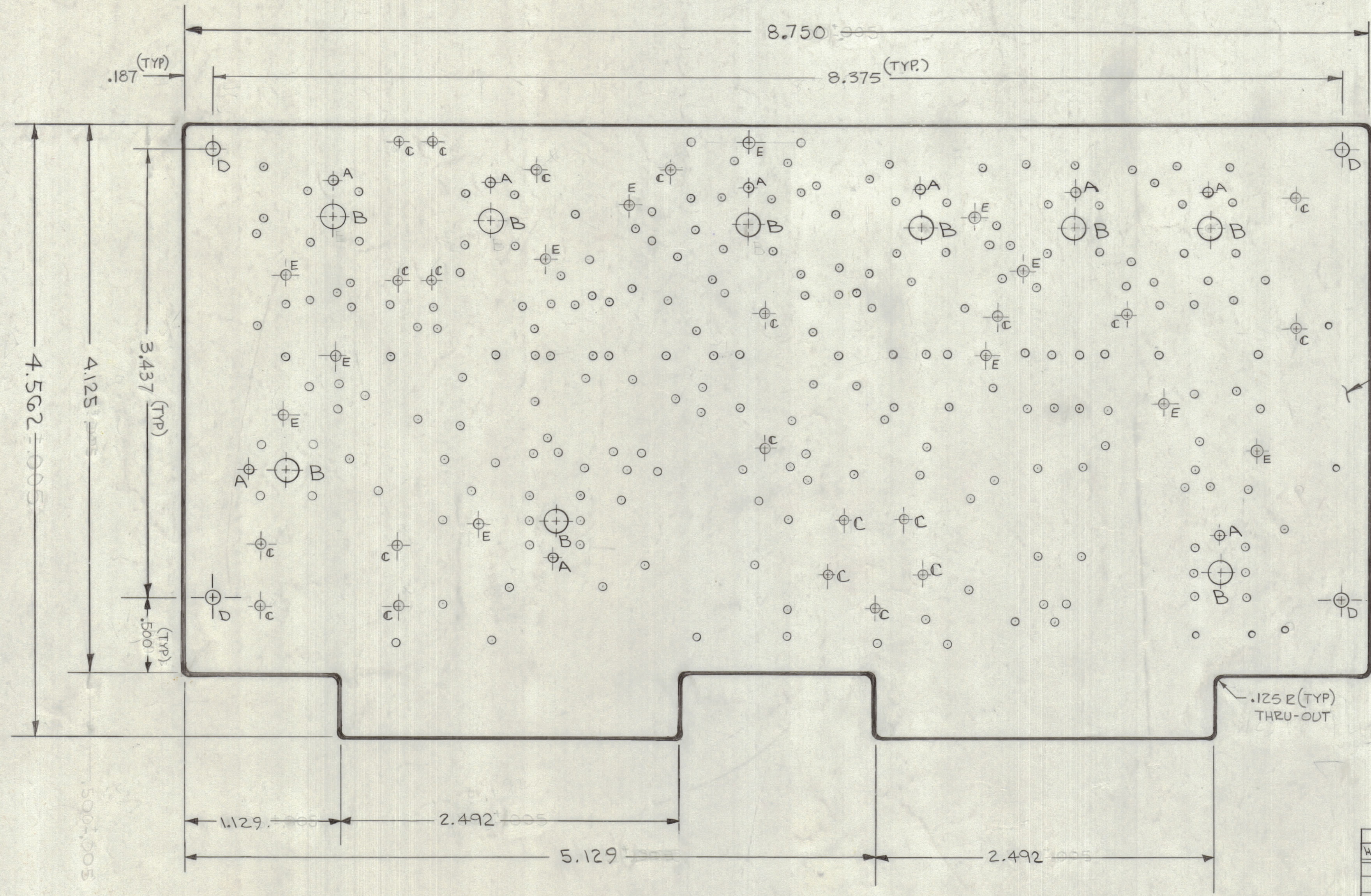


REVISIONS						
ZONE	BYM	DESCRIPTION	DATE	K.M.N. NO.	DRAFT	CHKD
X1		SEE SHEET (1)	8/5/65	X1		
X2		SEE SHEET (1)	11/22/65	X2		
Ø		ORIG. RELEASE FOR PRODUCTION	11/23/65			
A		SEE SHEET (2)	12-28-66	17545	G.D.L.	
B		SEE SHEET (1), (2)	1-25-67	17731	C.R.	



HOLE LEGEND		
HOLE	DESCRIPTION	REQ'D
A	.093 DIA	9
B	.281 DIA	9
C	.062 DIA	21
D	.185-188 DIA	4
E	.091-.095 DIA	72
	UNMARKED HOLES .052	242

FABRICATION NOTES
 TO BE MANUFACTURED IN ACCORDANCE WITH T.M.C. SPEC. S-735 AND SPECIFICALLY,
 1. OVERALL MATERIAL THICKNESS .062 ± .0075 AS PER (pp 13.2/2, 3.1, 3.2)
 2. EDGE BOARD CONNECTOR (FINGERS) SHALL BE GOLD PLATED (pp 10, 10.1) CONDUCTIVE PATTERN SHALL BE SOLDER COATED (pp 13.3 #13.3.1)
 3. HOLES TO BE PLATED THRU AS PER (pp 11.4)
 3. COMPONENT SIDE TO BE MARKED AS PER S-727 (FOR MARKING SEE SHEET (2 OF 3) (NOTE THIS IS A SINGLE SIDED BOARD)

QTY/UNIT	MODEL USED ON	ASSY. NO.
1	VLRE-1	A4313

SCALE	DATE	BY	CHKD
Do Not Scale	7-27-68	LEANZA	

REQ'D	ITEM	PART NUMBER	DESCRIPTION	SYMBOL
12	2	TE127-6	TERMINAL, STUD	E
4	1	TE104-G	NUT, PLAIN, CLINCH	D

LIST OF MATERIAL

THE TECHNICAL MATERIEL CORP.			
MAMARONECK, NEW YORK			
TITLE			
PRINTED CIRCUIT BD. IF MODULE			
UNLESS OTHERWISE SPECIFIED	DRAWN	DATE	FINAL APPROVAL
DIMENSIONS ARE IN INCHES AND INCLUDE CHEMICALLY APPLIED OR PLATED FINISHES	7-27-68		
	CHECKED	DATE	
	11/23/65		
DECIMALS .X ± .05 .XX ± .01 .XXX ± .005	FRACTIONS ± 1/64	ANGLES ± 0° 30'	REV. LTR.
	MECH. DES.	DATE	
	11/23/65		

NOTES

PC225
B