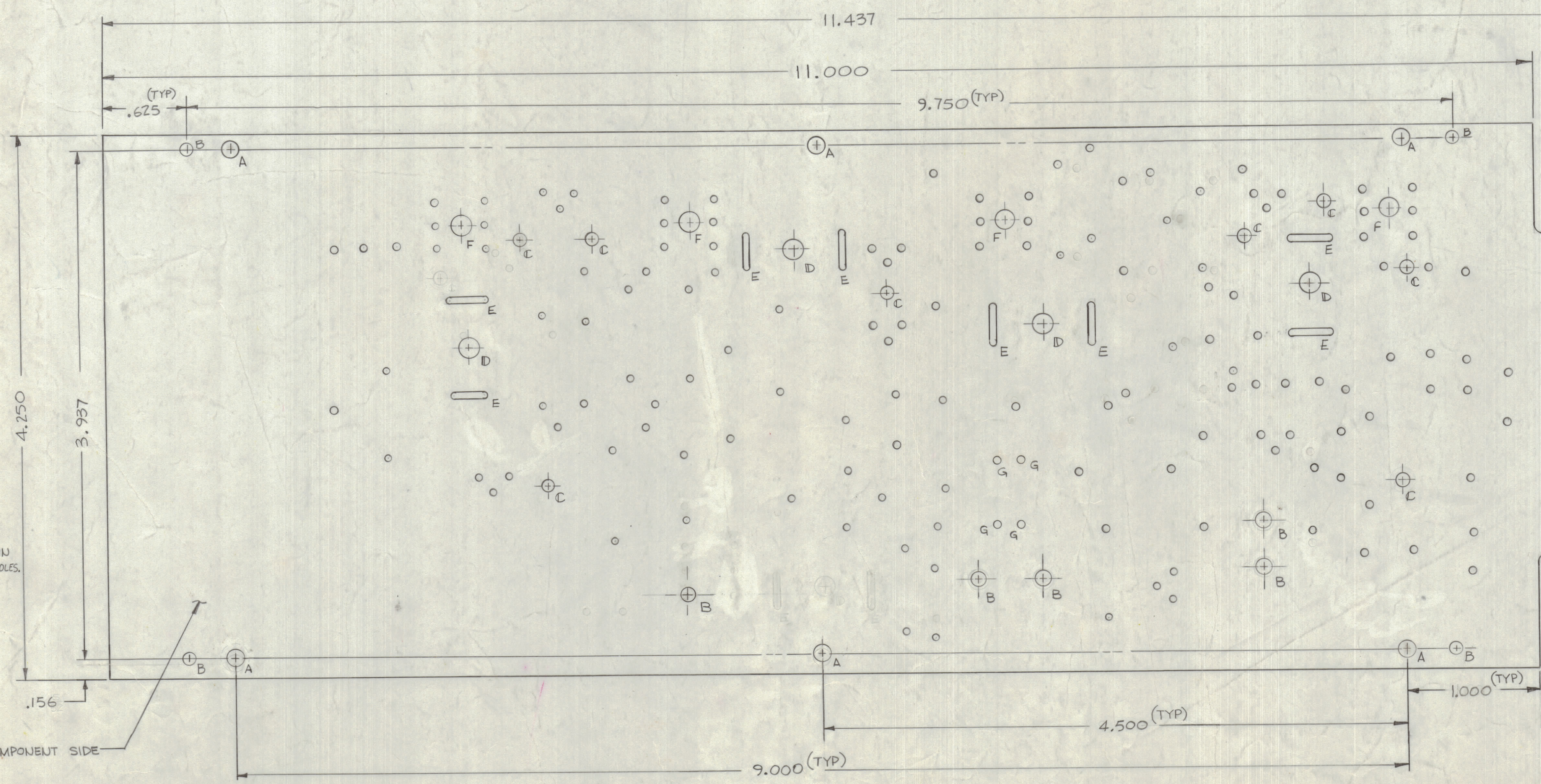


REVISIONS							
ZONE	BYM	DESCRIPTION	DATE	E.M.N. NO.	DRAFT	CHKD	APPD.
X1		SEE SHEET-1	7/9/65		JL		
		ORIGINAL RELEASE FOR PRODUCTION	7/9/65		JL		
A		PLATED-THRU HOLE NOTE DELETED. HOLE WAS .166-170 HOLE WAS .150, 4. Holes Added, DIL. REVISED (46 HOLES Item D was TE129-2, Item D was U144-0440 Added)	8/4/65	14603	RU		
B		C220 HOLES REVISED, C223 ADDED	12-9-65	15415	RU		
B7	C	ONE 'B' HOLE ADDED	12-28-65	17545	G.D.L.		

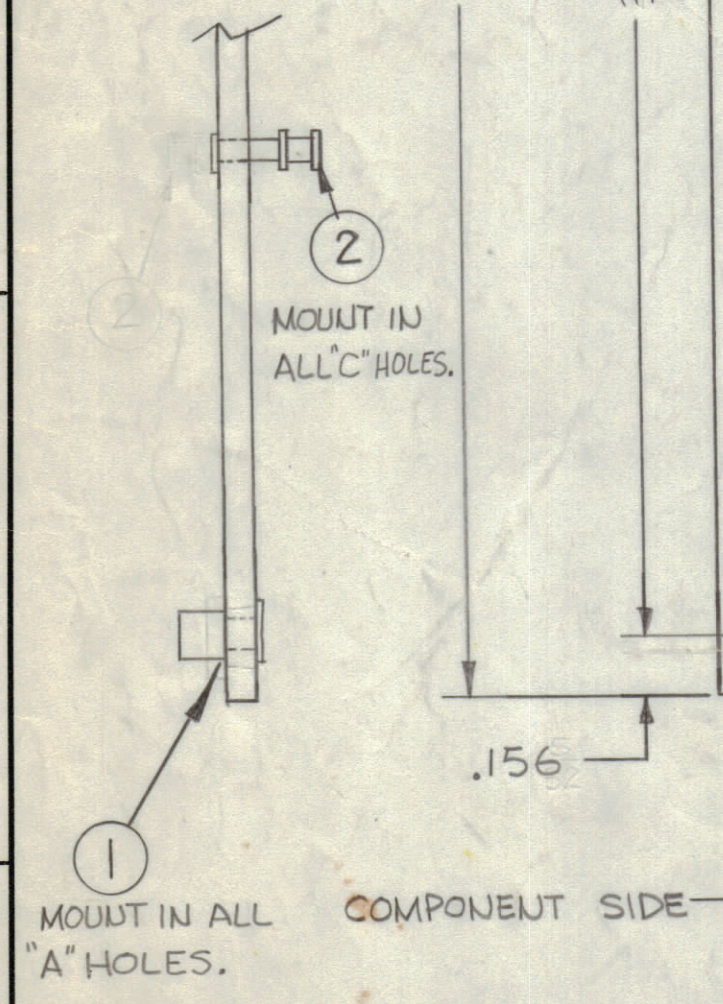
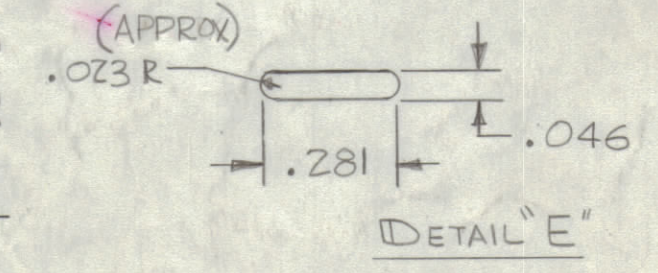


FABRICATION NOTES

TO BE MANUFACTURED IN ACCORDANCE WITH TMC SPEC. S-735 AND SPECIFICALLY.

- OVERALL MATERIAL THICKNESS .062 ± .0075 AS PER (PP13.2.2, 3.1, 3.2)
- EDGE BOARD CONNECTOR (FINGERS) SHALL BE GOLD PLATED (PP10, 10.1) CONDUCTIVE PATTERN SHALL BE SOLDER COATED (PP13.3 & 13.3.1)
- COMPONENT SIDE TO BE MARKED AS PER S-727 (FOR MARKING SEE SHEET (2 of 3)). (NOTE THIS IS A SINGLE SIDED BOARD).

HOLE	DESCRIPTION	REQ
A	.185-188 DIA	6
B	.140 DIA	9
C	.091-.094 DIA	8
D	.171 DIA	4
E	SEE DETAIL	3
F	.281 DIA	4
G	.078 DIA	4
-	UNMARKED HOLES .052 Dia	136



REQ'D.	ITEM	PART NUMBER	DESCRIPTION	SYMBOL
3	2	TE127-6	TERMINAL, STUD	C
6	1	TE164-6	NUT, PLAIN, CLINCH	A

LIST OF MATERIAL				
MATERIAL	FINISH	TITLE	DATE	REV. LTR.
~ SEE NOTE ~		THE TECHNICAL MATERIEL CORP. MAMARONECK, NEW YORK		
		PRINTED CIRCUIT Bd, VLRE RF MODULE		
UNLESS OTHERWISE SPECIFIED DIMENSIONS ARE IN INCHES AND INCLUDE CHEMICALLY APPLIED OR PLATED FINISHES	DRAWN	DATE	FINAL APPROVAL	DATE
SCALE 2:1	RUZZO	6-17-65	[Signature]	7/1/65
DECIMALS ±.05 XX ±.01 XXX ±.005	CHECKED	DATE		
FRACTIONS ± 1/64 ANGLES ± 0° 30'	DATE			
THE CONTENTS OF THIS DRAWING ARE THE EXCLUSIVE PROPERTY OF THE TECHNICAL MATERIEL CORP. ITS UNAUTHORIZED USE OR REPRODUCTION IN WHOLE OR IN PART IS STRICTLY FORBIDDEN.	ELECT. DES.	DATE		
	MECH. DES.	DATE		
			PC223	C
			SHEET 3 OF 3	

NOTES