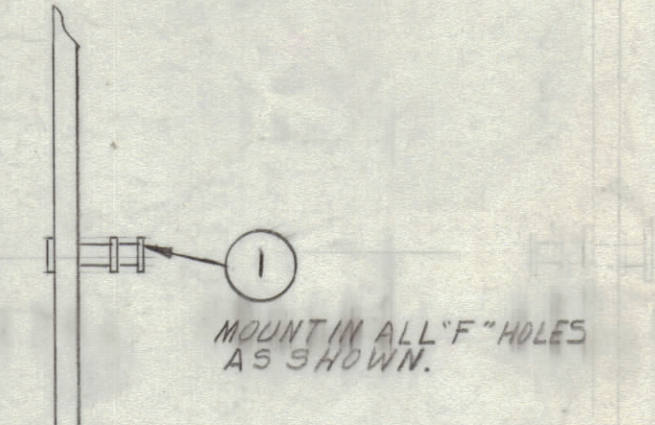
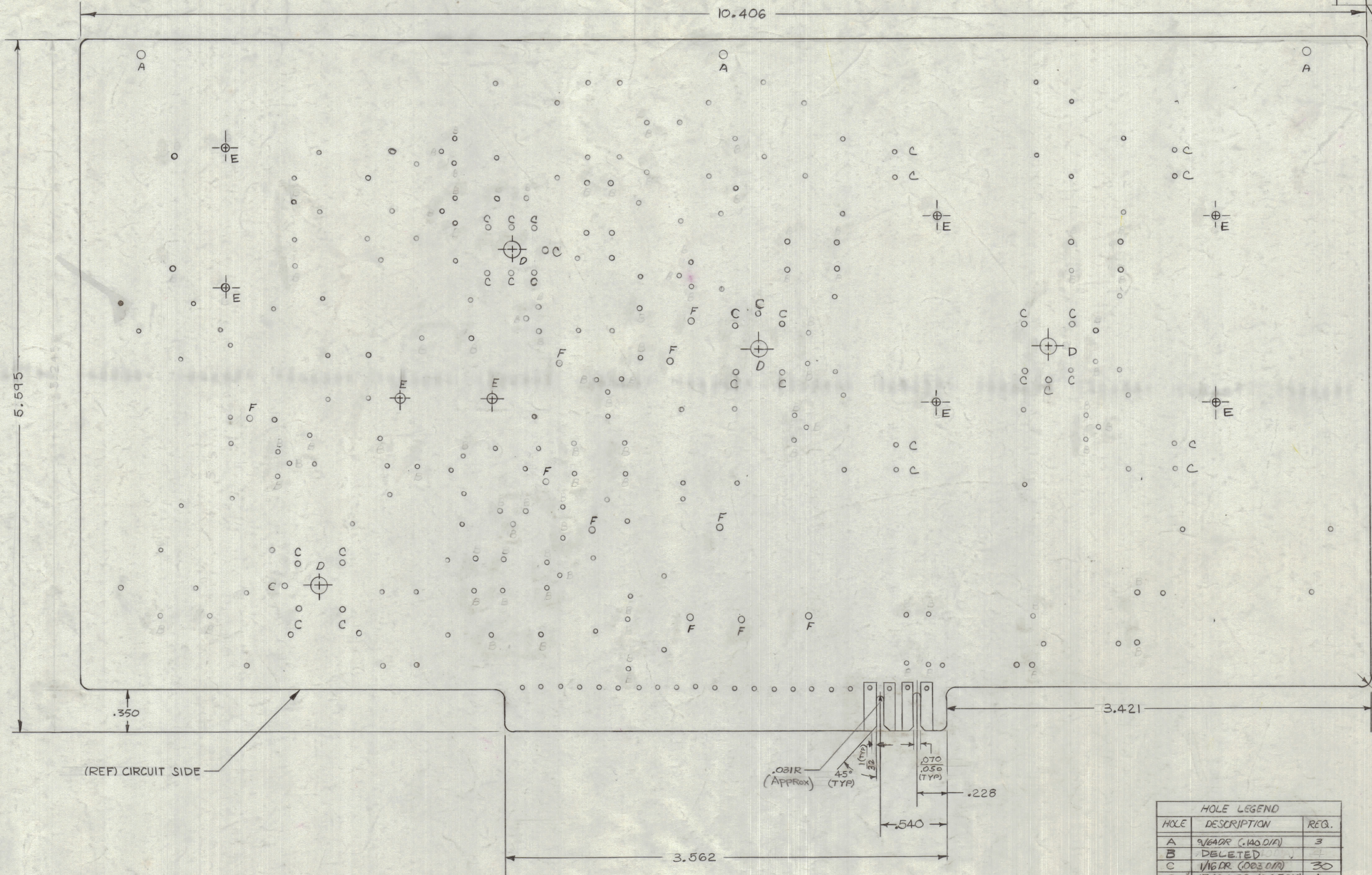


REVISIONS							
ZONE	SYM	DESCRIPTION	DATE	E.M.N. NO.	DRAFT	CHKD	APPO
X		EXP. RELEASE	5-13-64				
Ø		ORIGINAL RELEASE FOR PRODUCTION	5-13-64				
A		1/8" HOLES CLARIFIED, 'G' HOLES WERE 1/8 OR, FABRICATION NOTE REVISED	6-10-64	14226			
B		SEE SHEET D, SIDE VIEW II, I ADDED	9/15/65	14565			
C		SEE SHEET 2 OF 3	8-11-66	16238	GDL		
D		G, E, D, HOLES CLARIFIED	11-23-66	17277			
E		ADD CHART INCL. .062 THICKNESS	5-10-78	21647			



HOLE	DESCRIPTION	REQ.
A	3/64 DR. (.140 DIA)	3
B	DELETED	
C	1/16 DR. (.063 DIA)	30
D	1/164 DR. (.265 DIA)	4
E	11/64 DIA.	8
F	#46 DR. (.081 DIA)	10
G	DELETED	
~	UNMARKED .052D	~

FABRICATION NOTE:
 TO BE MANUFACTURED IN ACCORDANCE WITH TMC SPEC. S-735, EXCEPT AS NOTED.
 1. MATERIAL G-10 EPOXY GLASS LAMINATED .002 2 OUNCE COPPER CLAD BOTH SIDES. (SEE CHART FOR THICKNESS)
 2. CONDUCTOR PATTERN SHALL BE SOLDER COATED AS PER PP.13.2.1
 3. PLATING TO BE TIN-LEAD AS PER PP.13.2.2
 4. HOLES TO BE PLATED THROUGH AS PER PP.11.4 EXCEPT FOR 3" A HOLES.
 5. EDGE BOARD CONNECTORS (FINGERS) SHALL BE GOLD PLATED AS PER PP.10.1.
 6. KEY SLOTS TO BE DEBURRED.

TMC PART NO.	THICKNESS
PC207	.093 ± .0075
PC207-1	.062 ± .0062

REQ'D.	ITEM	PART NUMBER	DESCRIPTION	SYMBOL
10	1	TE-127-2	TERMINAL STUD	F

LIST OF MATERIAL	
MATERIAL	SEE NOTE
FINISH	THE TECHNICAL MATERIEL CORP. MAMARONECK, NEW YORK
TITLE	PRINTED CIRCUIT BOARD SYN B
DRAWN	DATE
CHECKED	DATE
ELECT. DES.	DATE
MECH. DES.	DATE
SHEET	3 OF 3

QTY./UNIT	CMRA-1	A4218
SCALE	CODE	ASS'Y. NO.
2:1	A	

NOTES
 THE CONTENTS OF THIS DRAWING ARE THE EXCLUSIVE PROPERTY OF THE TECHNICAL MATERIEL CORP. ITS UNAUTHORIZED USE OR REPRODUCTION IN WHOLE OR IN PART IS STRICTLY FORBIDDEN.

PC207 E