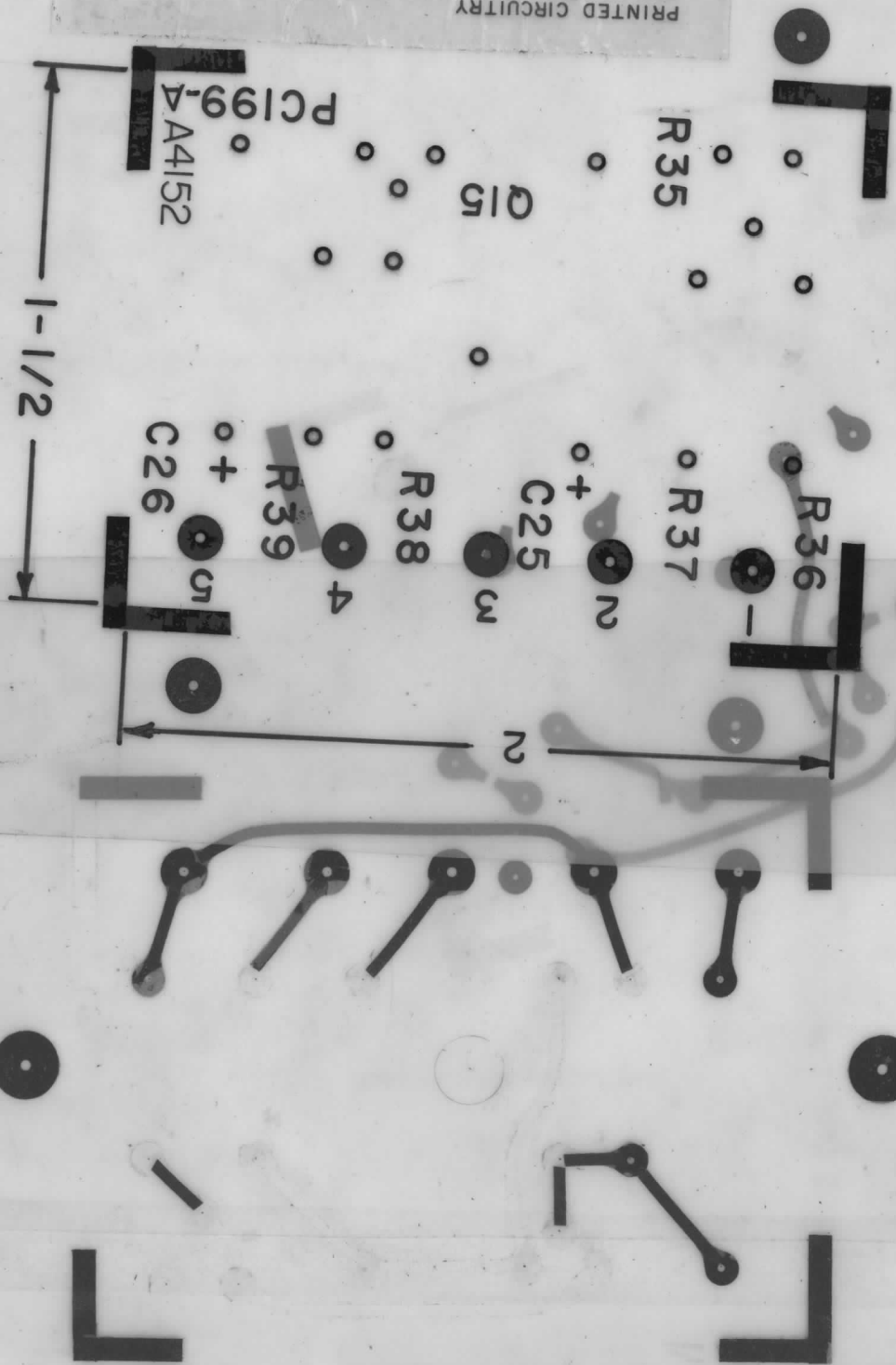


PRINTED CIRCUITRY
TMC NO. PC199
SCALE = 2:1
CAUTION: THIS SIDE "FACE UP" WHEN PRINTING



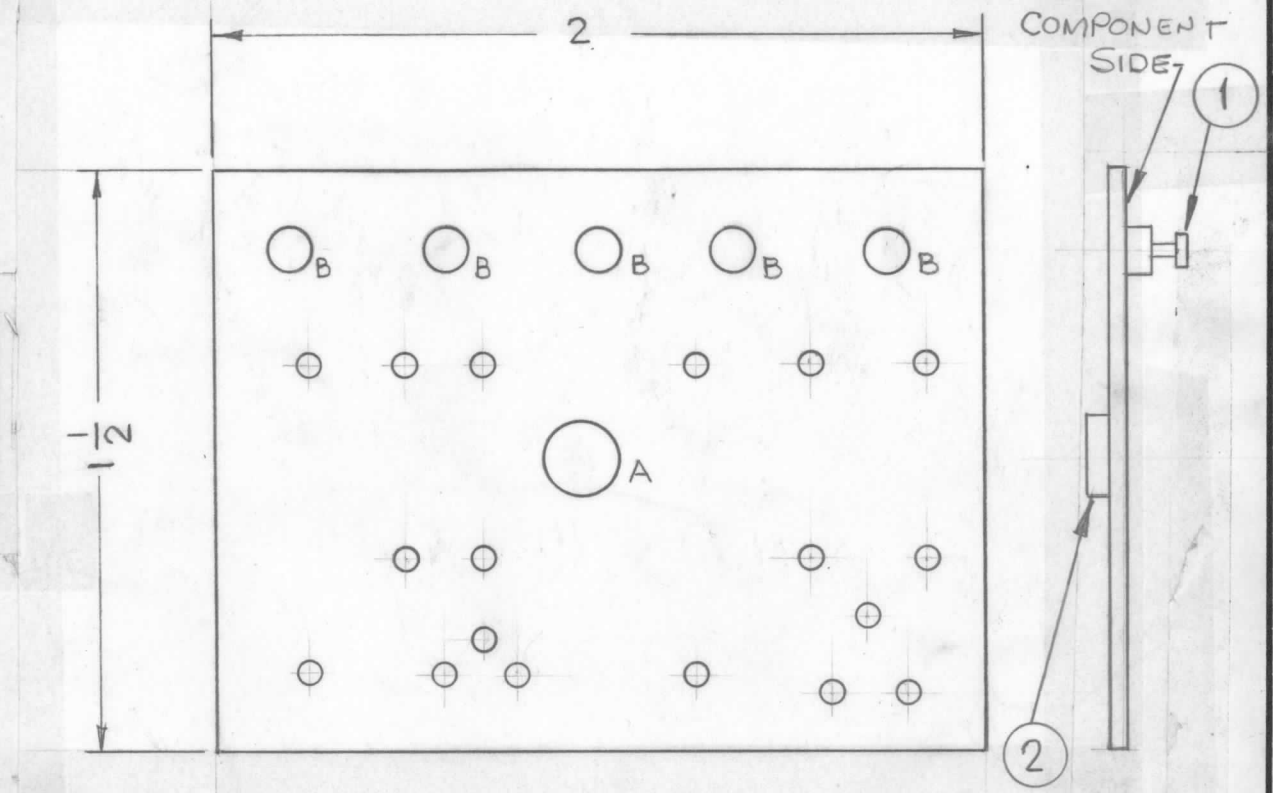
PC199-A

PRINTED CIRCUITRY
TMC NO. PC199
SCALE = 2:1
CAUTION: THIS SIDE "FACE UP" WHEN PRINTING

PC199 A

REVISIONS						
SYM	DESCRIPTION	DATE	E.M.N. NO.	DRAFT	CHKD	APPD
X1	SHEET 2 DELETED, MADE PART OF SHEET 1	4-24-65				
Ø	ORIGINAL RELEASE FOR PRODUCTION	9/24/65	Ø	AVV		
A	IT. 1 AND 2 ADDED	1/13/66	15555	AVV		

HOLE	DIAMETER	REQ'D
UNMARKED	.052 DIA.	18
A	.189 DIA.	1
B	.113 DIA.	5



REF: A4152, A4155

- TO BE MANUFACTURED IN ACCORDANCE TO TMC SPEC. S-735.
- MATERIAL: G-10 EPOXY GLASS LAMINATE
2 OUNCE COPPER CLAD BOTH SIDES.
 - ALL HOLES TO BE PLATED-THRU UNLESS OTHERWISE SPECIFIED.
 - ALL CONDUCTIVE PATTERNS SHALL BE SOLDER COATED (PARA. 13.2.1)

REQ'D.	ITEM	PART NUMBER	DESCRIPTION	SYMBOL
1	2	TE108-1	NUT, PLN, CLINCH	
5	1	TE127-1	TERM. STUD	

LIST OF MATERIAL				
MATERIAL		THE TECHNICAL MATERIEL CORP. MAMARONECK, NEW YORK		
FINISH		TITLE PRINTED CKT. BOARD		
UNLESS OTHERWISE SPECIFIED DIMENSIONS ARE IN INCHES AND INCLUDE CHEMICALLY APPLIED OR PLATED FINISHES		DRAWN T. RAMIREZ DATE 1-12-61	FINAL APPROVAL DATE 9/24/65	DATE 9/24/65
DECIMALS .X ± .05 .XX ± .01 .XXX ± .005	TOLERANCES	FRACTIONS ± 1/64 ANGLES ± 0° 30'	ELECT. DES. DATE 9/22/65	MECH. DES. DATE
THE CONTENTS OF THIS DRAWING ARE THE EXCLUSIVE PROPERTY OF THE TECHNICAL MATERIEL CORP. ITS UNAUTHORIZED USE OR REPRODUCTION IN WHOLE OR IN PART IS STRICTLY FORBIDDEN.		PC199		A
NOTES		SHEET		REV. LTR.