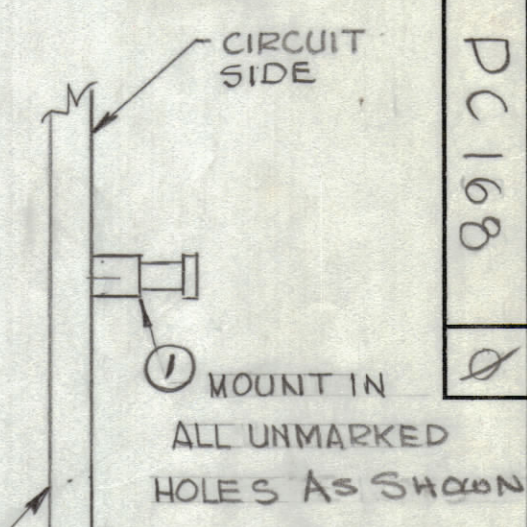
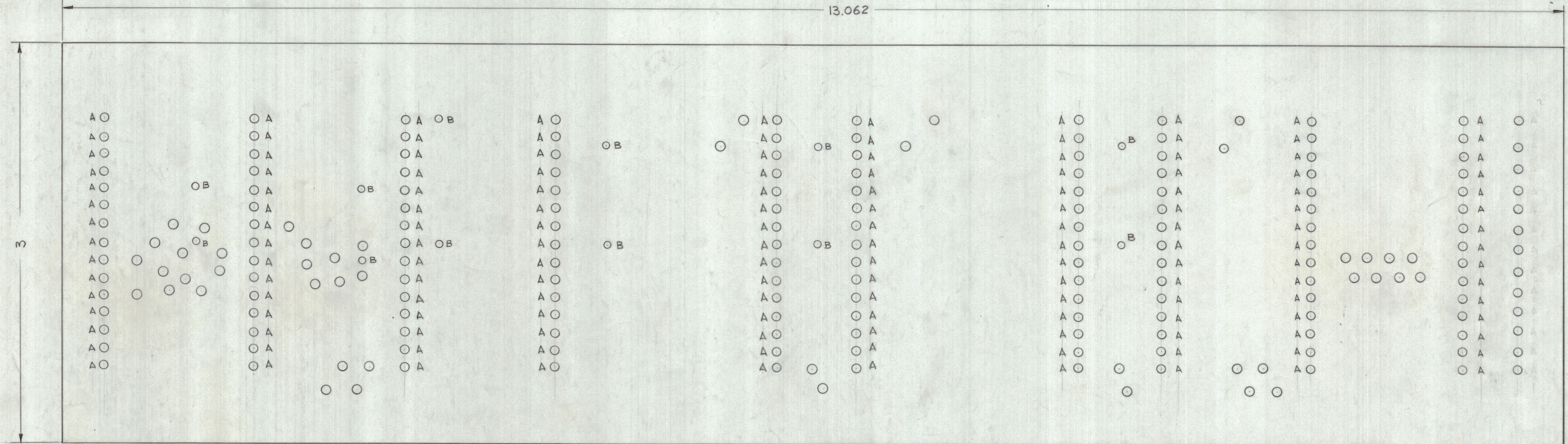


ZONE		SYM	DESCRIPTION	DATE	E.M.N. NO.	DRAFT	CHKD	APPD
X			EXP. RELEASE	10-23-63		G.D.L.		
			ORIGINAL RELEASE FOR PRODUCTION	9-15-67		E		

MODEL PFCB-1  
 THIS P/C BOARD SHOULD BE USED FOR  
 SPARE PARTS ONLY ON SERIAL NO'S  
 17625 thru 17655 & 19192 & 19498.



HOLE LEGEND		
HOLE	DESCRIPTION	* REQ.
A	# 49 DRILL (.073)	* 150
B	# 55 DRILL (.052)	* 12
UN-MARKED	# 46 DRILL (.081)	* 59

\* INDICATES PLATE-THRU HOLES

FABRICATION NOTES:  
 TO BE MANUFACTURED IN ACCORDANCE WITH TMC SPEC S-735 & SPECIFICALLY:  
 1. ALL HOLES TO BE "PLATED-THROUGH" UNLESS OTHERWISE SPECIFIED.  
 2. CONDUCTIVE PATTERN SHALL BE SOLDER COATED (PP13.2.1)  
 3. MATERIAL 9-10 EPOXY GLASS LAMINATED .093 ± .0075 THICK 2 OUNCE COPPER CLAD.

REF: A3810

59	1	TE127-3	TERM. STUD	
REQ'D.	ITEM	PART NUMBER	DESCRIPTION	SYMBOL

O. POSE LIST OF MATERIAL

MATERIAL	SEE NOTE	THE TECHNICAL MATERIEL CORP. MAMARONECK, NEW YORK	
FINISH	#	PRINTED CIRCUIT BOARD	

1	PFCB-1		
SCALE	2:1	CODE	A
THE CONTENTS OF THIS DRAWING ARE THE EXCLUSIVE PROPERTY OF THE TECHNICAL MATERIEL CORP. ITS UNAUTHORIZED USE OR REPRODUCTION IN WHOLE OR IN PART IS STRICTLY FORBIDDEN.			

UNLESS OTHERWISE SPECIFIED DIMENSIONS ARE IN INCHES AND INCLUDE CHEMICALLY APPLIED OR PLATED FINISHES	DRAWN	G.D.L.	DATE	10-23-63	FINAL APPROVAL	DATE	9/15/65
DECIMALS .X ± .05 .XX ± .01 .XXX ± .005	CHECKED	MP	DATE	9/14/65			
FRACTIONS ± 1/64 ANGLES ± 0° 30'	ELECT. DES.	MP	DATE	9/14/65			
	MECH. DES.		DATE				

PC 168

SHEET 3 OF 3

REV. LTR.

NOTES