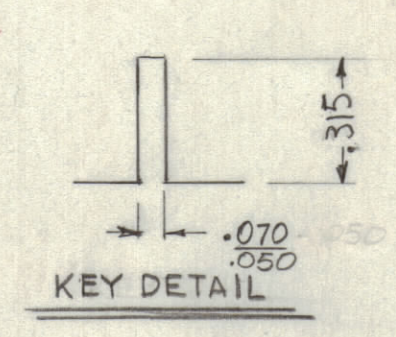
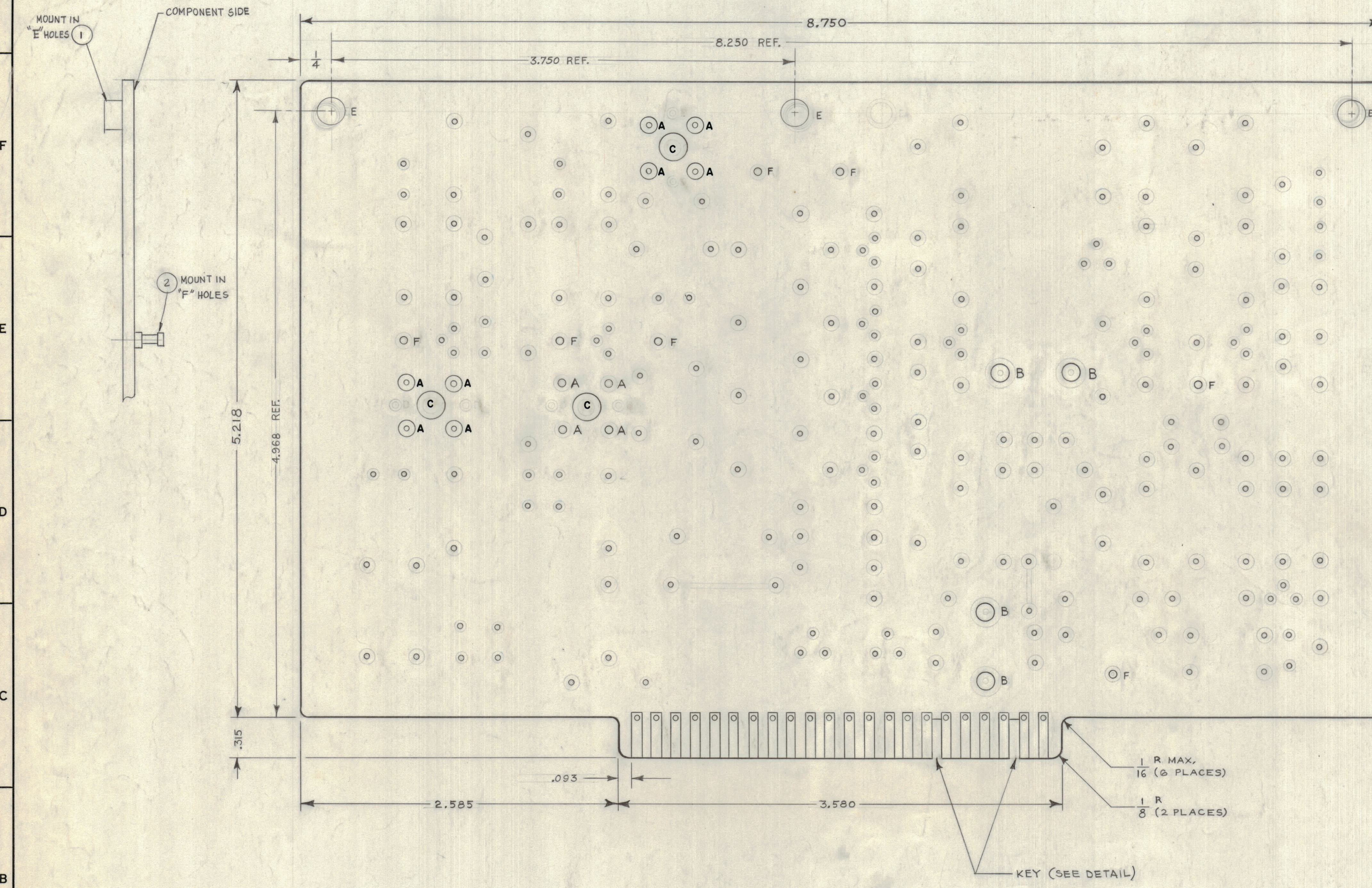


REVISIONS						
ZONE	SYM	DESCRIPTION	DATE	E.M.N. NO.	DRAFT	CHKD
	X	EXPERIMENTAL RELEASE	5-14-64	1	NP	
	X1	SIDE VIEW, KEY DETAIL & BUILDUP ADDED	6-26-64	2	GDL	
	X2	OS2 ADDED TO KEY DETAIL	7-13-64	3		
	X3	1/16" ADDED TO (4) CORNERS	7-13-64	4		
	Ø	ORIGINAL RELEASE FOR PRODUCTION	3-18-65	5	RJ	



HOLE LEGEND		
HOLE	DESCRIPTION	REQ'D
A *	DR #53 (.059) DIA	12
B *	DR 9/64 DIA	4
C	DR 17/64 DIA	3
UN-MARKED	*DR #60 (.040) DIA	240
D	---	---
E	DR #11 (.191) DIA	3
F	DR #46 (.081) DIA	7

* INDICATES PLATE-THRU HOLES

FABRICATION NOTES:
 TO BE MANUFACTURED IN ACC/W TMC SPEC. 5-735 & SPECIFICALLY:
 1. ALL HOLES TO BE "PLATED-THROUGH" UNLESS OTHERWISE SPECIFIED.
 2. CONDUCTIVE PATTERN SHALL BE SOLDER COATED (PP13.2.1).
 3. EDGE BOARD CONNECTORS (FINGERS) SHALL BE GOLD PLATED (PP10).
 4. PLATED-THROUGH HOLES SHALL BE MINIMUM OF GOLD ALL ETCHED SURFACES & PLATED-THRU HOLES.

REF: A3653

REQ'D.	ITEM	PART NUMBER	DESCRIPTION	SYMBOL
7	2	TE127-3	TERMINAL, MIDGET SINGLE	F
3	1	TE108-7	STANDOFF, RIVET TYPE	E

M. GELLMAN LIST OF MATERIAL

MATERIAL	SEE NOTE 1	THE TECHNICAL MATERIEL CORP. MAMARONECK, NEW YORK	
FINISH	---	TITLE PRINTED CIRCUIT BOARD IF, 100 KC	
SCALE	2:1	CODE	A
QTY./UNIT	1	MODEL USED ON	VLRB-1
		ASSY. NO.	A3653
DECIMALS	X ± .05	FRACTIONS	± 1/64
	.XX ± .01	ANGLES	± 0° 30'
	.XXX ± .005		

DRAWN	M. Peters	DATE	5-14-64	FINAL APPROVAL		DATE	
CHECKED		DATE					
ELECT. DES.	MP	DATE	3-10-65				
MECH. DES.	MP	DATE	3-10-65				

UNLESS OTHERWISE SPECIFIED DIMENSIONS ARE IN INCHES AND INCLUDE CHEMICALLY APPLIED OR PLATED FINISHES

THE CONTENTS OF THIS DRAWING ARE THE EXCLUSIVE PROPERTY OF THE TECHNICAL MATERIEL CORP. ITS UNAUTHORIZED USE OR REPRODUCTION IN WHOLE OR IN PART IS STRICTLY FORBIDDEN.

NOTES

PC105

3 OF 3