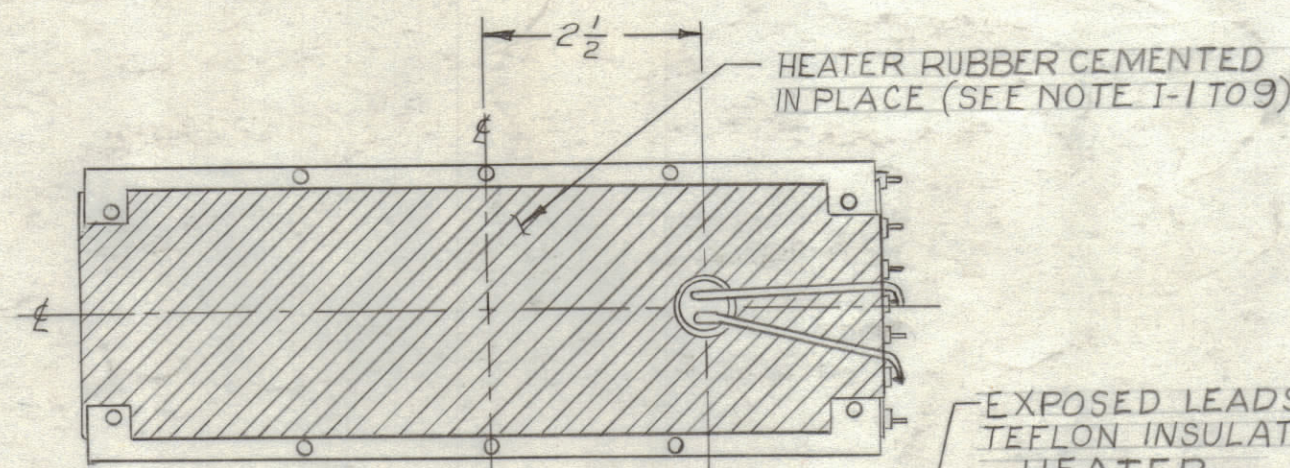


TMC CONTROL P/N	MFG. CODE	MFG. CODE	OVEN CONTROL CODE	HEATER CODE
OC101XX129	S401-129	243-1980	C	H

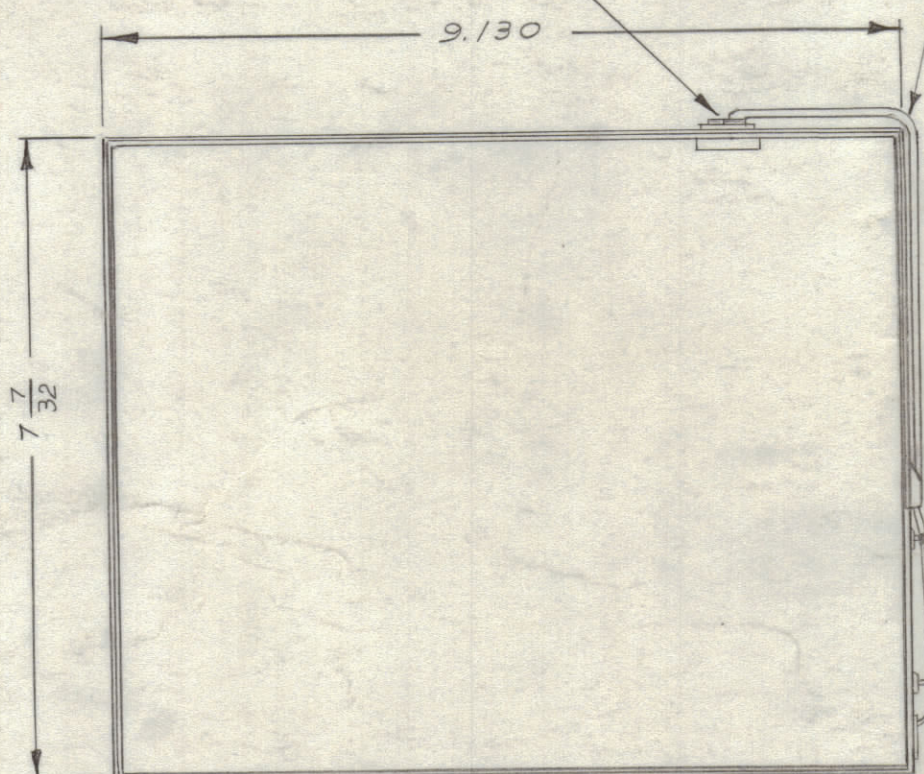
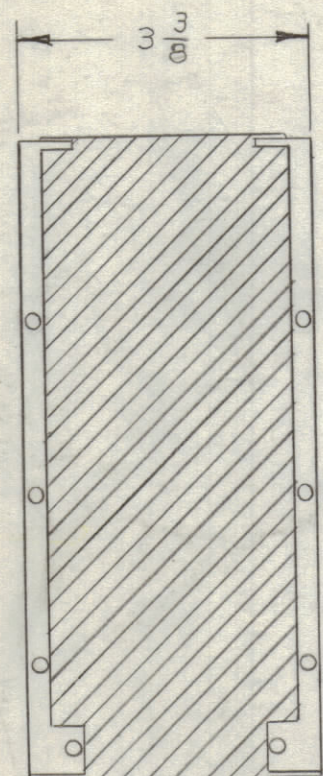
REVISIONS				
ZONE	SYM	DESCRIPTION	DATE	E.M.N. NO. DRAFT CHKD APPD
	Ø	ORIGINAL RELEASE FOR PRODUCTION NO LONGER REQUIRED	12/8/65	

OBSOLETE
 REPLACED BY NO LONGER REQUIRED
 By J. CAMARDA

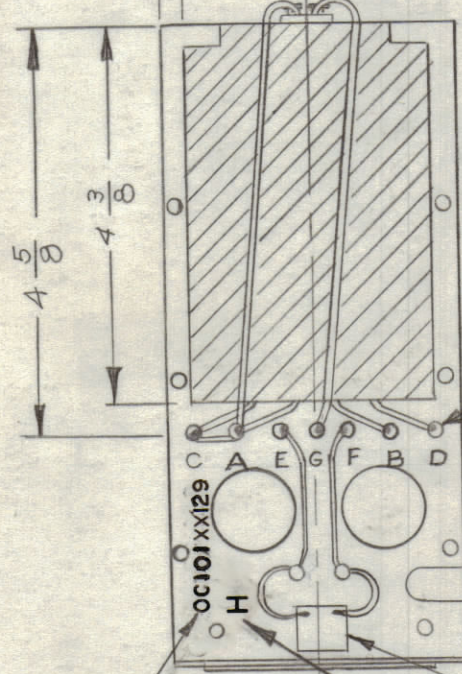


EXPOSED LEADS SHALL HAVE TEFLON INSULATION
HEATER

THERMAL CUTOUT (SEE NOTE I-6)

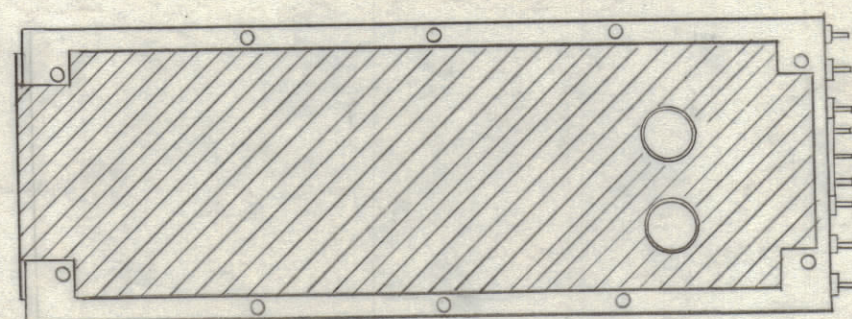


1/4" TYP. FROM BOTH SIDES FOUR (4) VIEWS

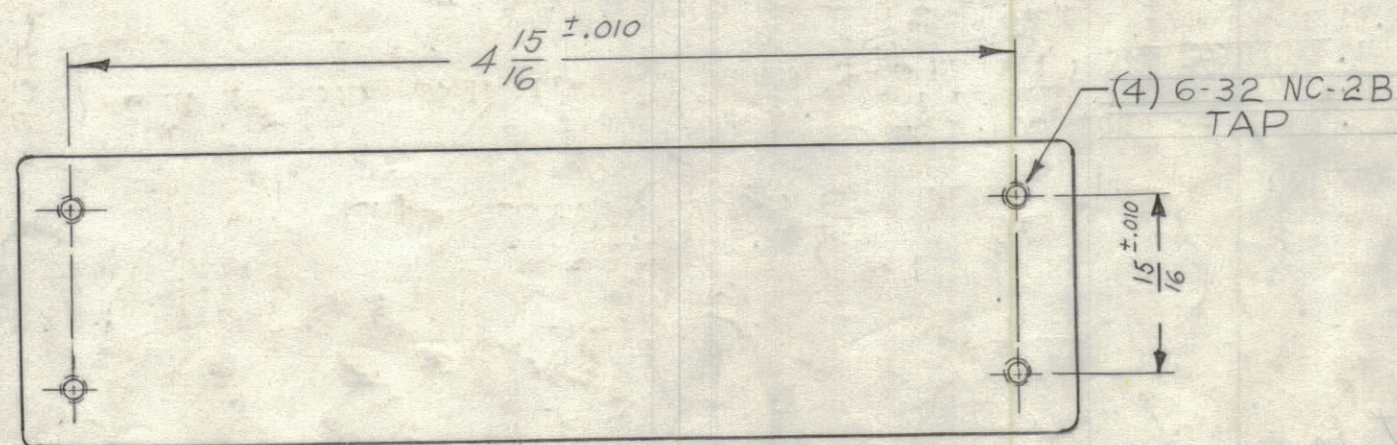


TERMINALS (SEE NOTE I-7)

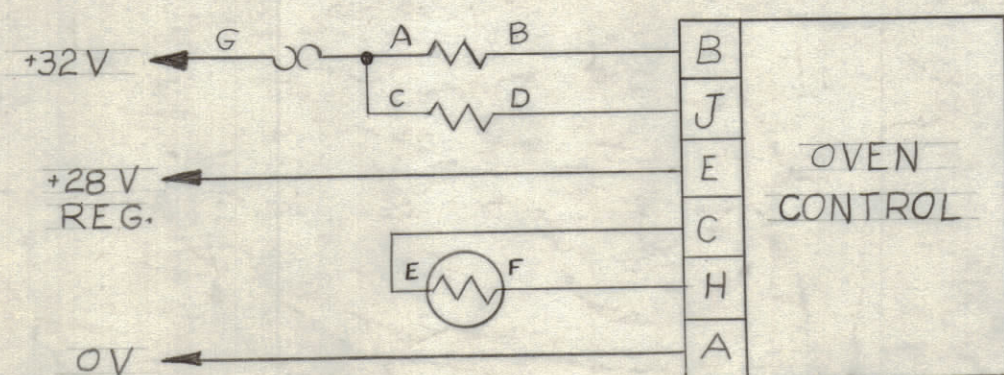
SENSING ELEMENT (SEE NOTE I-8) EPOXIED IN PLACE
 STAMP TMC CONTROL P/N 1/8" HIGH GOTHIC (SEE CHART)
 STAMP CODE NUMBER 1/4" HIGH BLK. GOTHIC (SEE CHART)



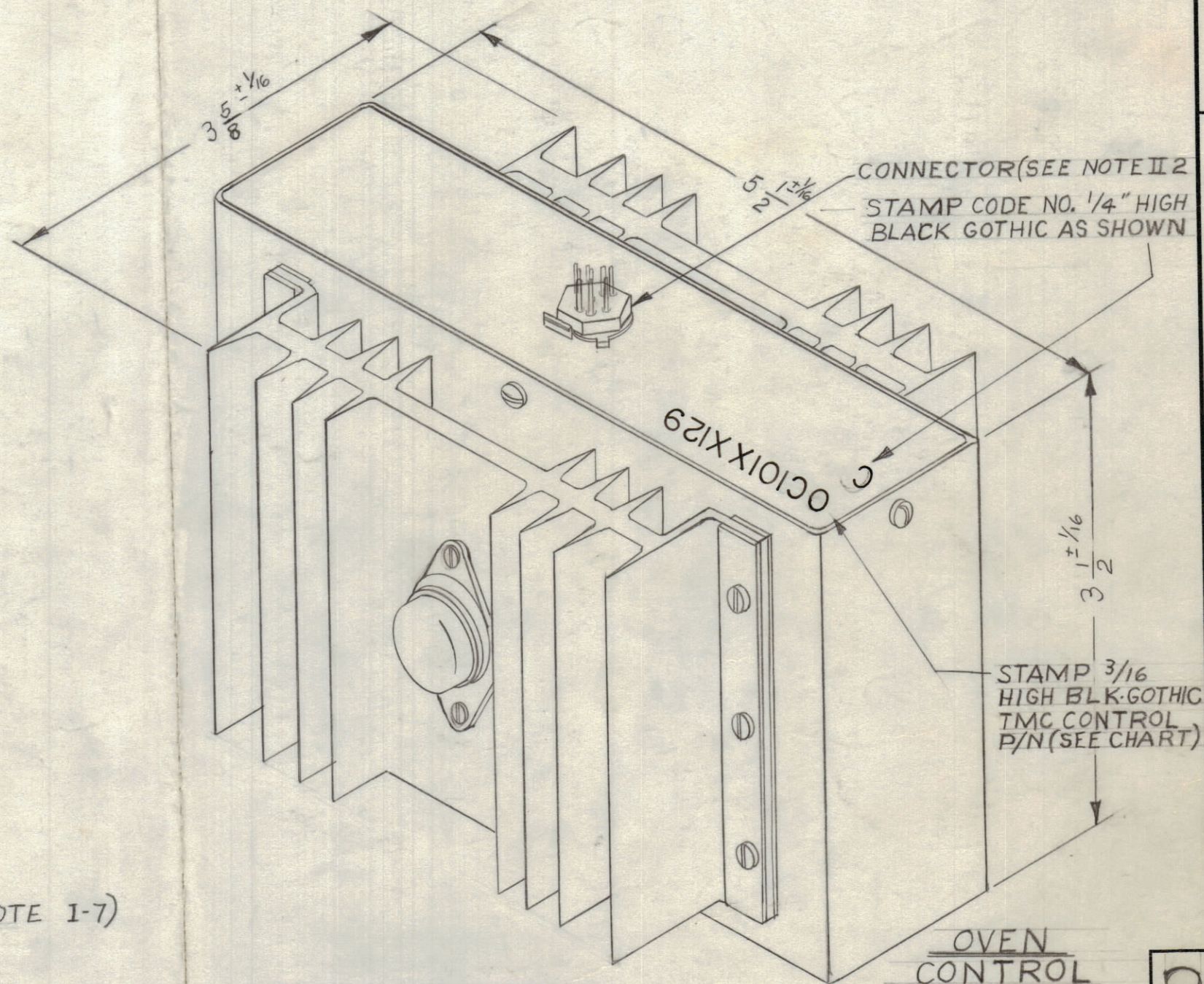
FRAME & HEATER ELEMENT ASSEMBLY



BOTTOM VIEW DETAIL OF OVEN CONTROL



SCHEMATIC DIAGRAM



ELECTRICAL SPECIFICATIONS:
 POWER: +32V UNREGULATED
 +28V REGULATED
 4 AMPERES
 AMBIENT TEMPERATURE: 0°C TO + 50°C
 INITIAL SETTING: +75°C ± 3°C
 STABILITY: ± 0.5°C
 WARM-UP TIME: 1 HOUR APPROXIMATELY

I. HEATING ELEMENT

- VOLTAGE: 10V TO 25V. PER LEG
- POWER: 8.4W TO 52W. PER LEG
- CURRENT: 0.84 AMPS TO 2.08 AMPS PER LEG
- FINISH: FRAME-YELLOW IRIDITE TMC S-404
- ELEMENT STYLE -PATCH TYPE: S401-129, #243-198.8
- THERMAL CUTOUT: 85°C "STEVENS" THERMOSTAT #17422 OR EQUIVALENT.
- TERMINALS: SOLDER TYPE #TMC TE-192-A1 OR EQUIVALENT.
- TEMPERATURE SENSING ELEMENT: "GULTON" L792-5%, S-401-129 #243-198.7 OR EQUIVALENT.
- DC RESISTANCE (APPROXIMATELY)
 A TO B-12Ω
 C TO D-12Ω
 E-TO F-2.2K Ω @68°F
 A- FRAME =
 C- FRAME =
 E- FRAME =

II. OVEN CONTROL

- FINISH CASE: SMOOTH GREY ENAMEL TMC S-115 HEAT SINKS-BLK ANOD
- CONNECTOR: TMC JJ-193-9P.
- MATING CONNECTOR: TMC PL 189-9S

CAUTION: MUST BE STOCKED AND USED AS A MATCHED SET PER PART NUMBER STAMPED ON UNIT.

REQ'D.	ITEM	PART NUMBER	DESCRIPTION	SYMBOL
ANGER LIST OF MATERIAL				
MATERIAL			THE TECHNICAL MATERIEL CORP. MAMARONECK, NEW YORK	
FINISH			TITLE OVEN PROPORTIONAL CONTROL AND HEATER	
UNLESS OTHERWISE SPECIFIED DIMENSIONS ARE IN INCHES AND INCLUDE CHEMICALLY APPLIED OR PLATED FINISHES		DRAWN A. MARINO	DATE 3-16-64	FINAL APPROVAL DATE
DECIMALS .X ± .05 .XX ± .01 .XXX ± .005		CHECKED JHO	DATE	DATE
FRACTIONS ± 1/64 ANGLES ± 0° 30'		ELECT. DES.	DATE	DATE
TOLERANCES		MECH. DES.	DATE	DATE
			SHEET	REV. LTR.

NOTES

THE CONTENTS OF THIS DRAWING ARE THE EXCLUSIVE PROPERTY OF THE TECHNICAL MATERIEL CORP. ITS UNAUTHORIZED USE OR REPRODUCTION IN WHOLE OR IN PART IS STRICTLY FORBIDDEN.

UNLESS OTHERWISE SPECIFIED DIMENSIONS ARE IN INCHES AND INCLUDE CHEMICALLY APPLIED OR PLATED FINISHES

QTY./UNIT	MODEL USED ON	ASS'Y. NO.
SCALE	CODE	