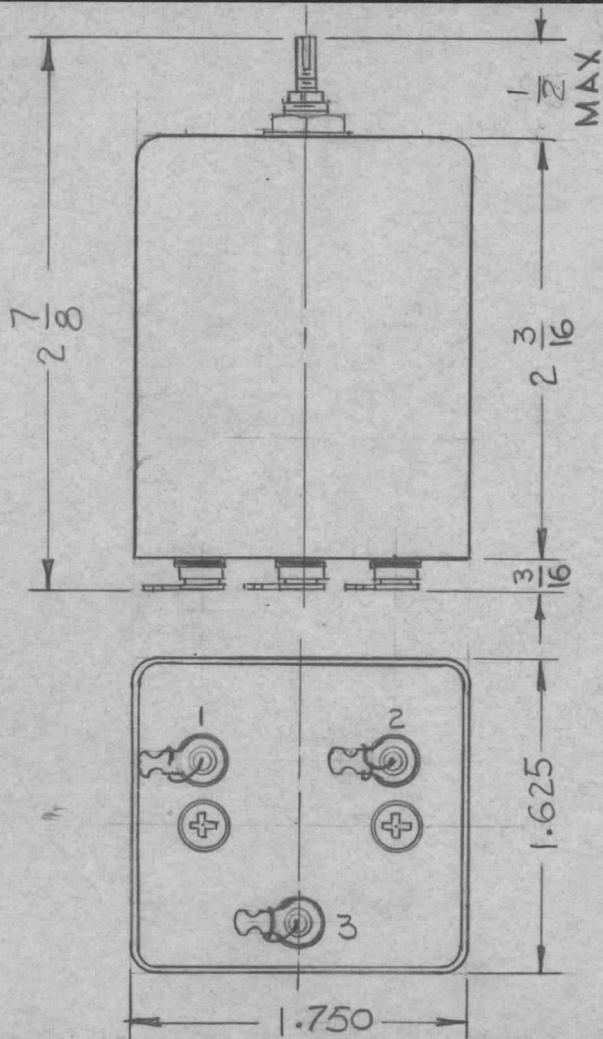


THE CONTENTS OF THIS DRAWING ARE THE EXCLUSIVE PROPERTY OF THE TECHNICAL MATERIEL CORP. ITS UNAUTHORIZED USE FOR REPRODUCTION IN WHOLE OR IN PART IS STRICTLY FORBIDDEN.

| | | | | |
|--------------------|-----------------|------------|--------|---|
| REQ. PER UNIT 1 | USED ON | | NW-101 | Ø |
| | MODEL GPR-92 | ASS'Y. NO. | | |

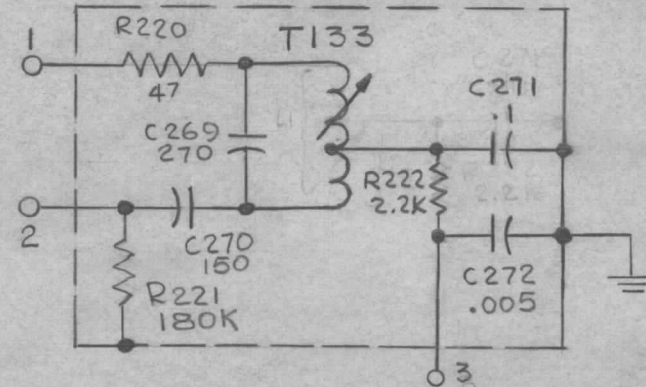


| MODEL | REQ. | FUNCTION | OPER. FREQ. | SYMBOL |
|--------|------|----------|----------------|--------|
| GPR-92 | 1 | BFO | 455 ± 3 KC | Z101 |

SPECIFICATIONS

MECHANICAL:
 MOUNTING DATA: HORIZONTALLY MOUNTED ON TOP OF CAN WITH TWO #6-32 SCREWS.
 CASE FINISH: TIN PLATED.

ELECTRICAL:
 OPERATING FREQUENCY:



SCHEMATIC DIAGRAM

| REQ. | ITEM | PART NO. | M. GELLMAN DESCRIPTION | | | SYMBOL |
|---|---------------------------------|---|--|--------------------|-------------------|--------------------------|
| | | | THE TECHNICAL MATERIEL CORP. MAMARONECK, NEW YORK | | | |
| | | | BFO NET WORK | | | |
| Ø | ORIGINAL RELEASE FOR PRODUCTION | 7/7/64 | Ø | A.M. | | |
| SYM | DESCRIPTION | DATE | CH. NO. | DRAFTS | CHECKER | ENG. APP. |
| UNLESS OTHERWISE SPECIFIED DIMENSIONS ARE IN INCHES AND INCLUDE CHEMICALLY APPLIED OR PLATED FINISHES | | SCALE 4A-3112 | | | | |
| DECIMALS .X ± .05 .XX ± .01 .XXX ± .005 | TOLERANCES | FRACTIONS ± 1/64 ANGLES ± 0° 30' | CODE A | | | |
| | | | | TYPE & TEMPER | HEAT TREAT. SPEC. | DRAWN G.D.L @ 7/7/64 |
| | | | | | | CHECKED MP |
| | | | | | | FINAL APPROVAL NW-101 |
| | | | | FINISH & SPEC. NO. | ELEC. DES. APP. | MECH. DES. APP. |