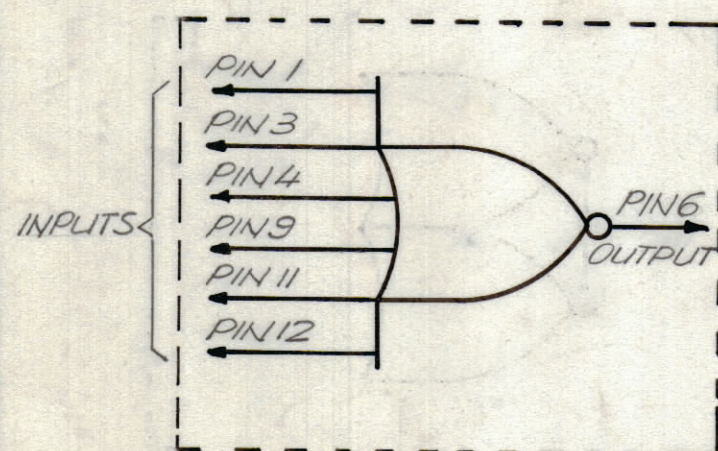


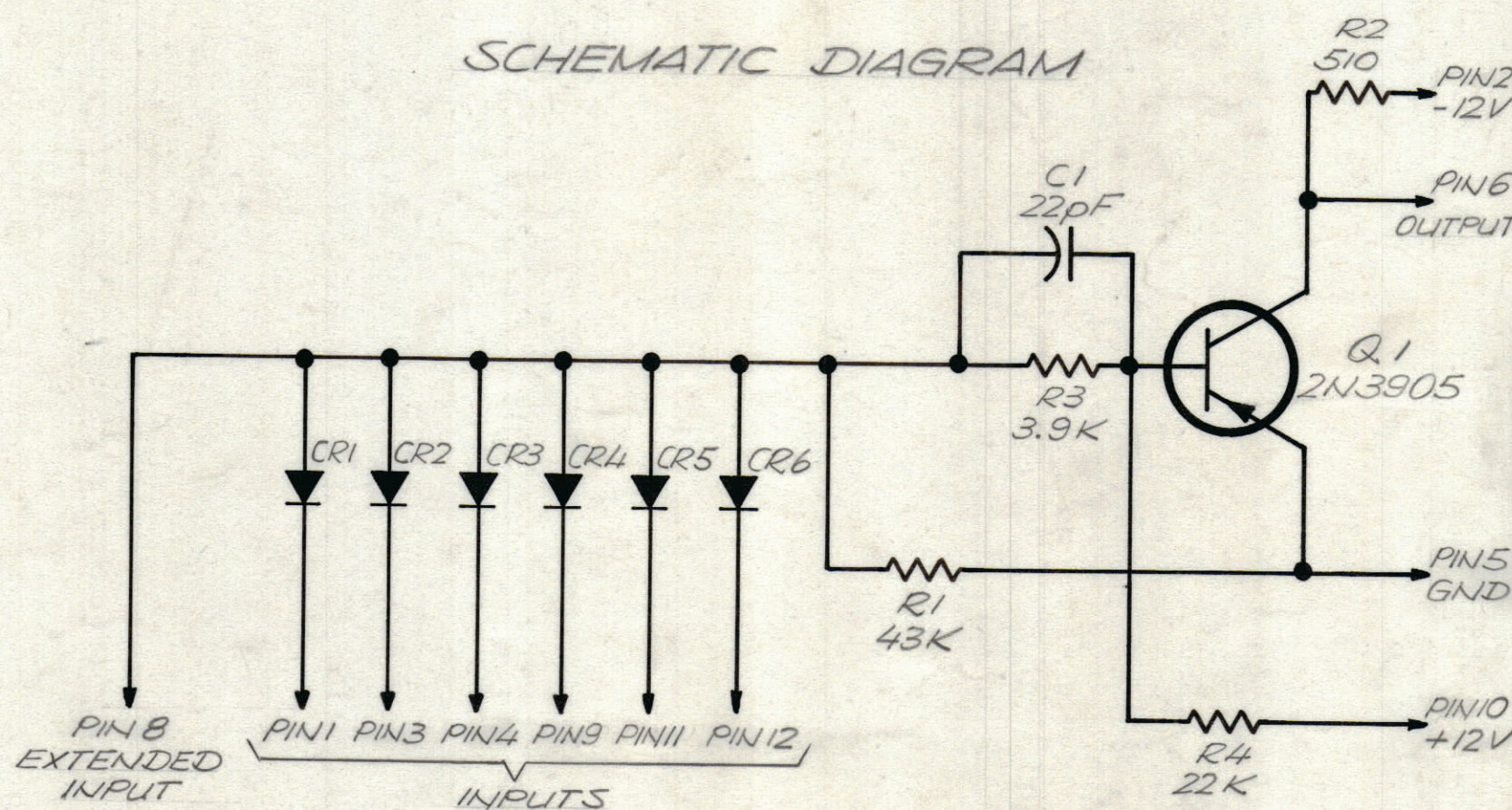
NW145-61

REVISIONS							
ZONE	LTR	DESCRIPTION	DATE	E.M.N.NO	DRAFT	CHKD	APPD
	X	EXP. RELEASE	9/29/69		KH.		
	X1	REV. & UPDATED	11/3/69		KH+RA		
	X2	12VOLT LOGIC TO ELEC. SPEC. ADD	11/16/69		KH+RA		
	Ø	ORIGINAL RELEASE FOR PRODUCTION	7/16/70		Ø		

LOGIC DIAGRAM



SCHEMATIC DIAGRAM



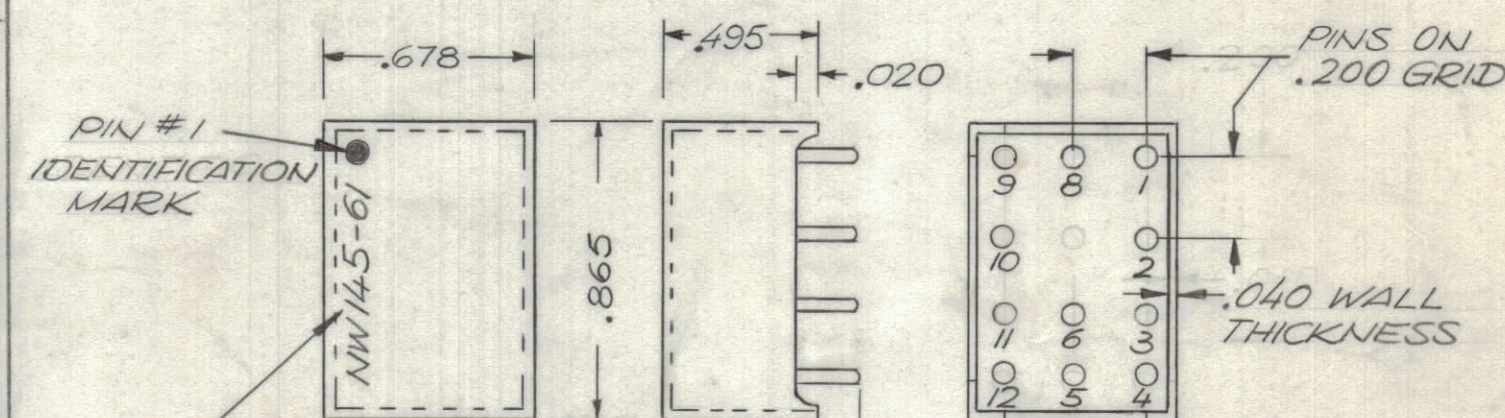
ALL RESISTORS ARE IN OHMS 1/4 W ± 5%  
ALL DIODES ARE 1N914.

ELECTRICAL SPECIFICATIONS:

12 VOLT LOGIC  
PIN # 5 GND  
PIN # 2 -12 V  
PIN # 10 +12 V  
OPERATING TEMPERATURE 0°C TO +75°C  
SWITCHING CHARACTERISTICS:  
EACH INPUT MIN. VOLTAGE -5.0 VDC  
EACH OUTPUT MIN. VOLTAGE -10.0 VDC  
INPUT T<sub>r</sub> = .08 μsec. T<sub>f</sub> = 0.2 μsec.  
OUTPUT T<sub>r</sub> = .1 μsec. T<sub>f</sub> = .2 μsec.

MECHANICAL SPECIFICATIONS

POTTING COMPOUND: EPOTEC 509  
CASE MATERIAL: DIALLYL PHTHALATE  
POLARIZING PIN: PIN # 7



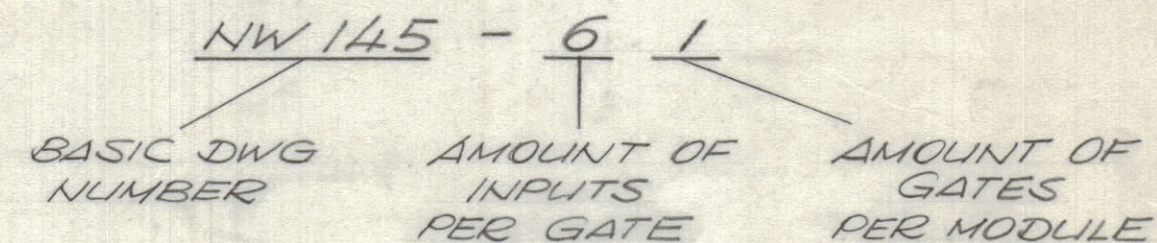
MARKING TO BE APPROX. 1/8 HIGH, WHITE GOTHIC EPOXY

MARK AS REQ.:  
NW 145 - 61

NOTE:

PINS ARE EXTRUDED COMPONENT LEADS. (DO NOT USE TRANSISTOR LEADS FOR MTG. PINS.)

TMC PART NUMBER SHALL APPEAR IN THE FOLLOWING FORM:



QTY. REQ.	ITEM	PART NO.	DESCRIPTION	SYMBOL
-----------	------	----------	-------------	--------

LIST OF MATERIAL

FINAL APPROVAL <i>S. De Marco</i>	DATE 2/21/70
MECH. DES. <i>R. J. 370</i>	DATE 2-24-70
ELECT. DES.	DATE
CHECKED <i>M. De Marco</i>	DATE 9/24/69
DRAWN <i>G. EVANGELIST KH.</i>	DATE 3.25.69

THE TECHNICAL MATERIEL CORP.  
MAMARONECK, NEW YORK

NETWORK, DIGITAL  
NOR GATE

QTY / UNIT	MODEL USED ON	ASS'Y NO.
	DDR-10M, K	
APPLICATION		
CODE		

NOTICE TO PERSONS RECEIVING THIS DRAWING  
THE TECHNICAL MATERIEL CORPORATION claims proprietary right in the material disclosed herein. This drawing is issued in confidence for engineering information only and may not be reproduced or used to manufacture anything shown hereon without permission from THE TECHNICAL MATERIEL CORPORATION to the user. This drawing is loaned for mutual assistance and is subject to recall at any time.

SIZE	CODE IDENT. NO.	DWG NO.	ISSUE
C	82679	NW 145	Ø
SCALE	SHEET		OF