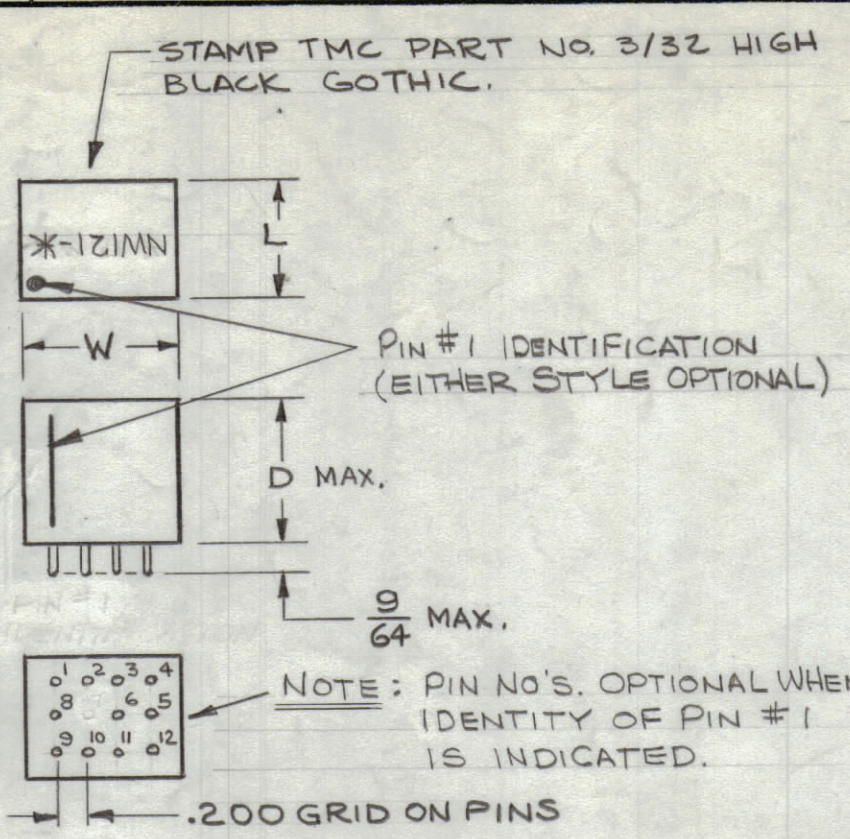
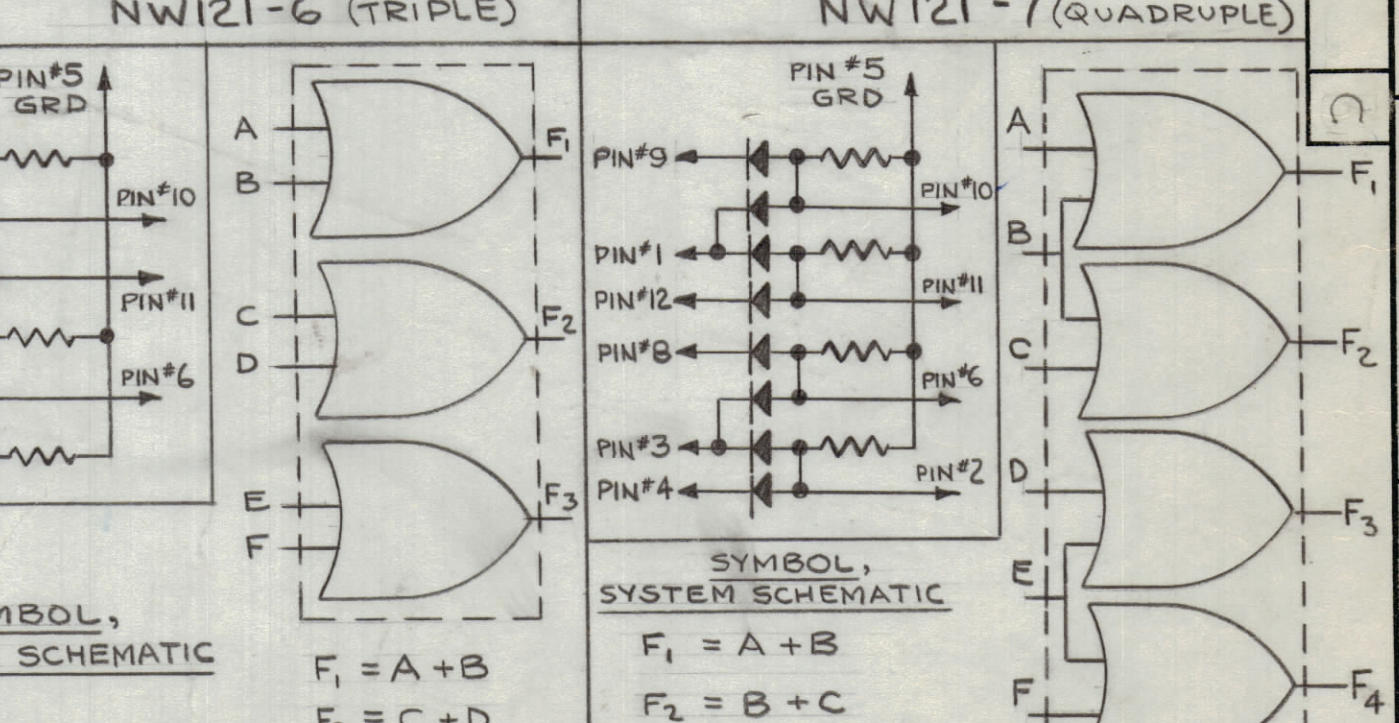
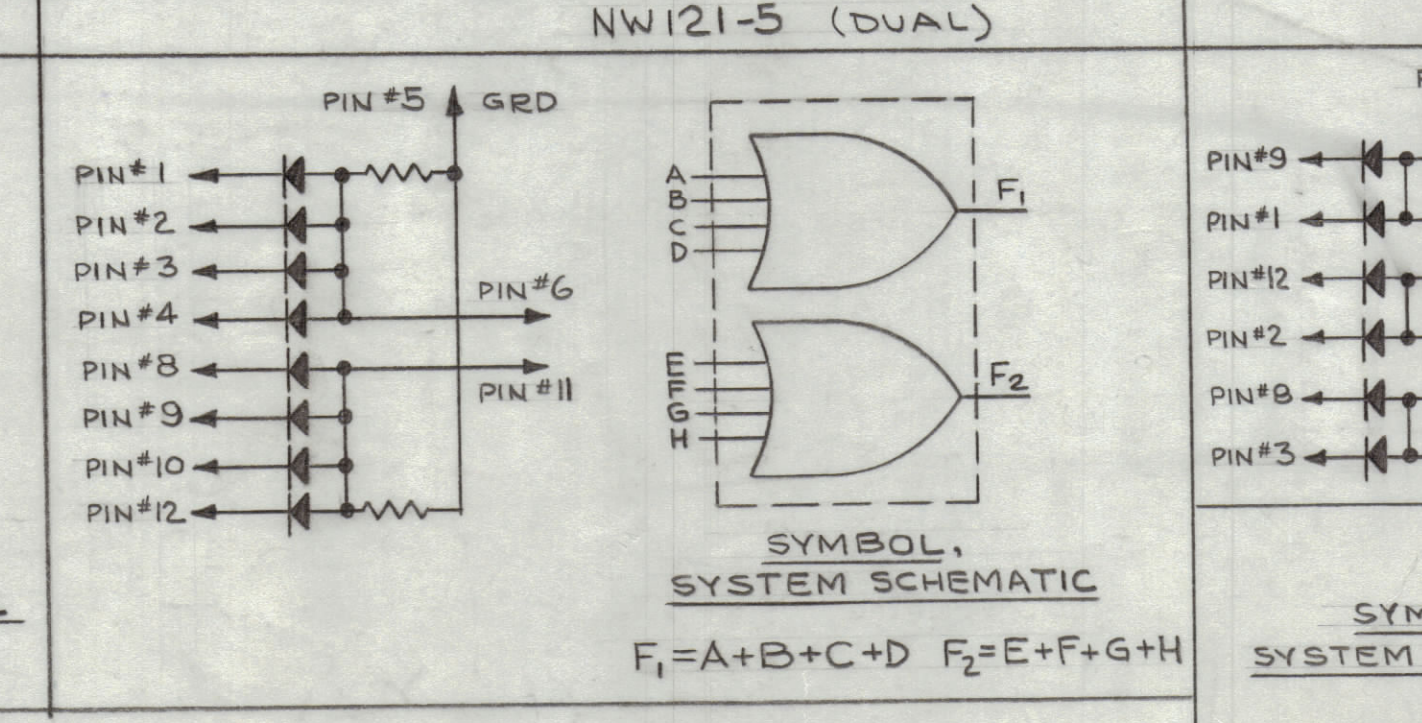
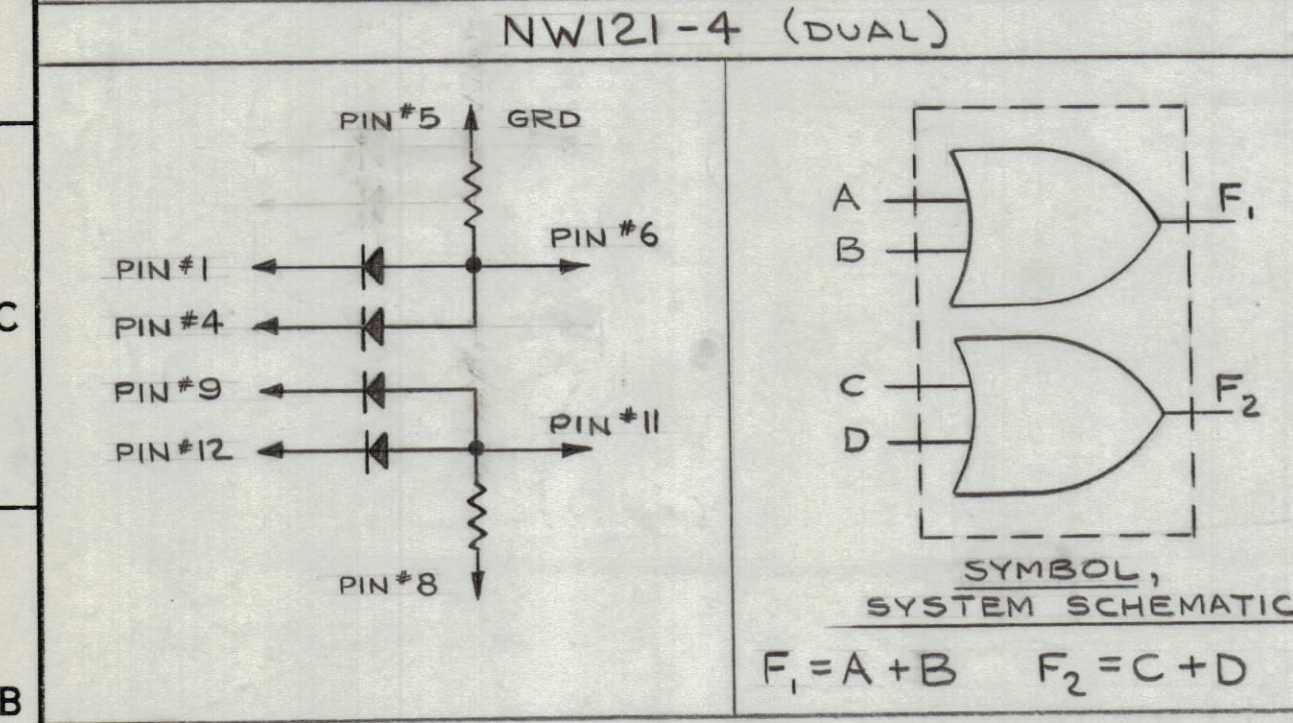
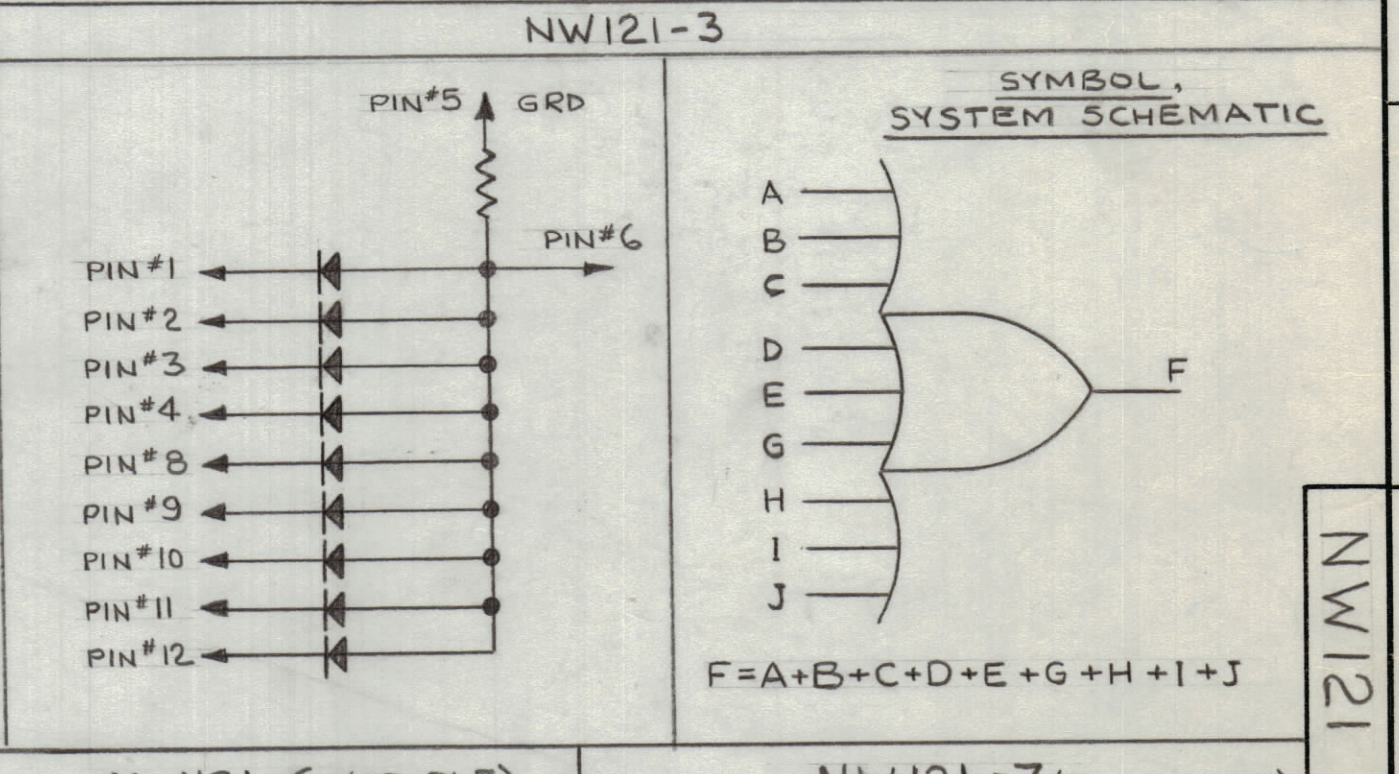
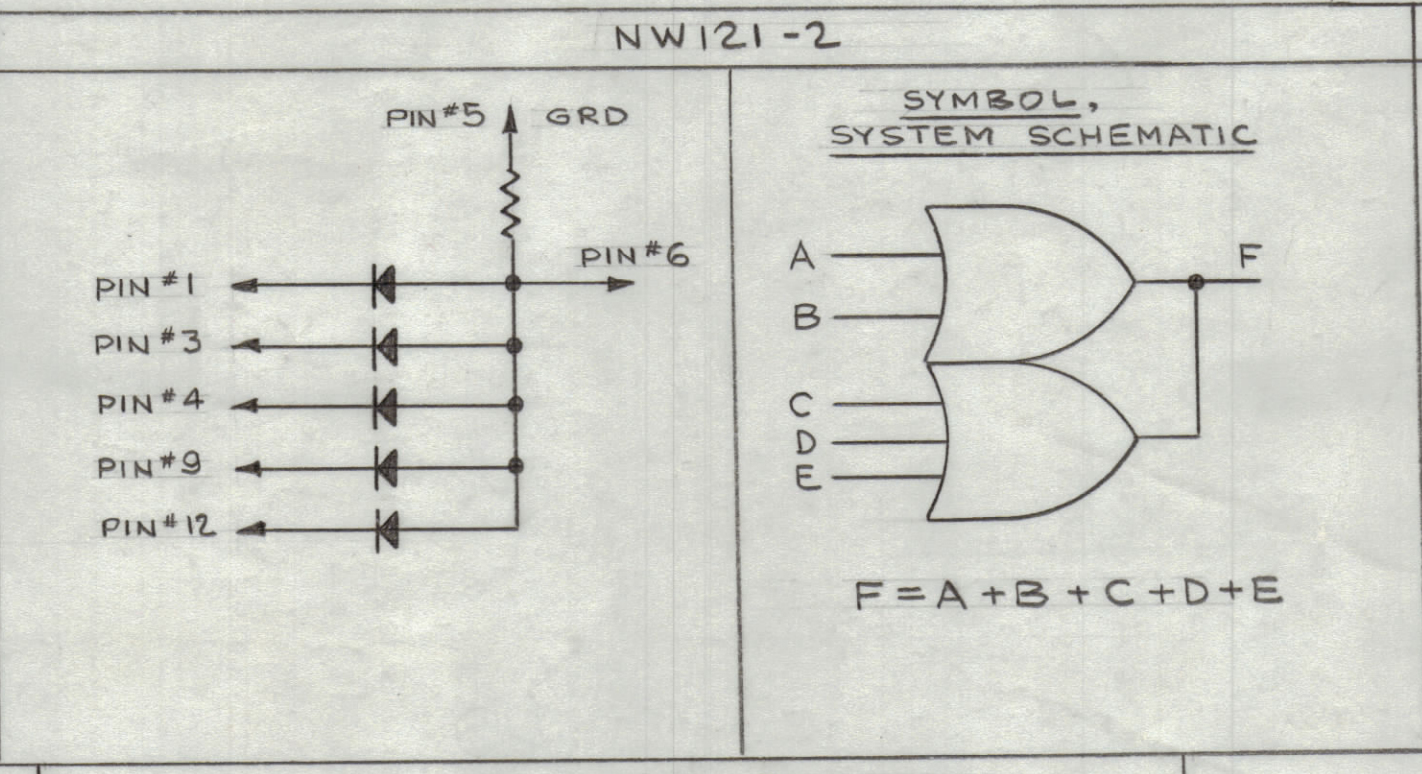
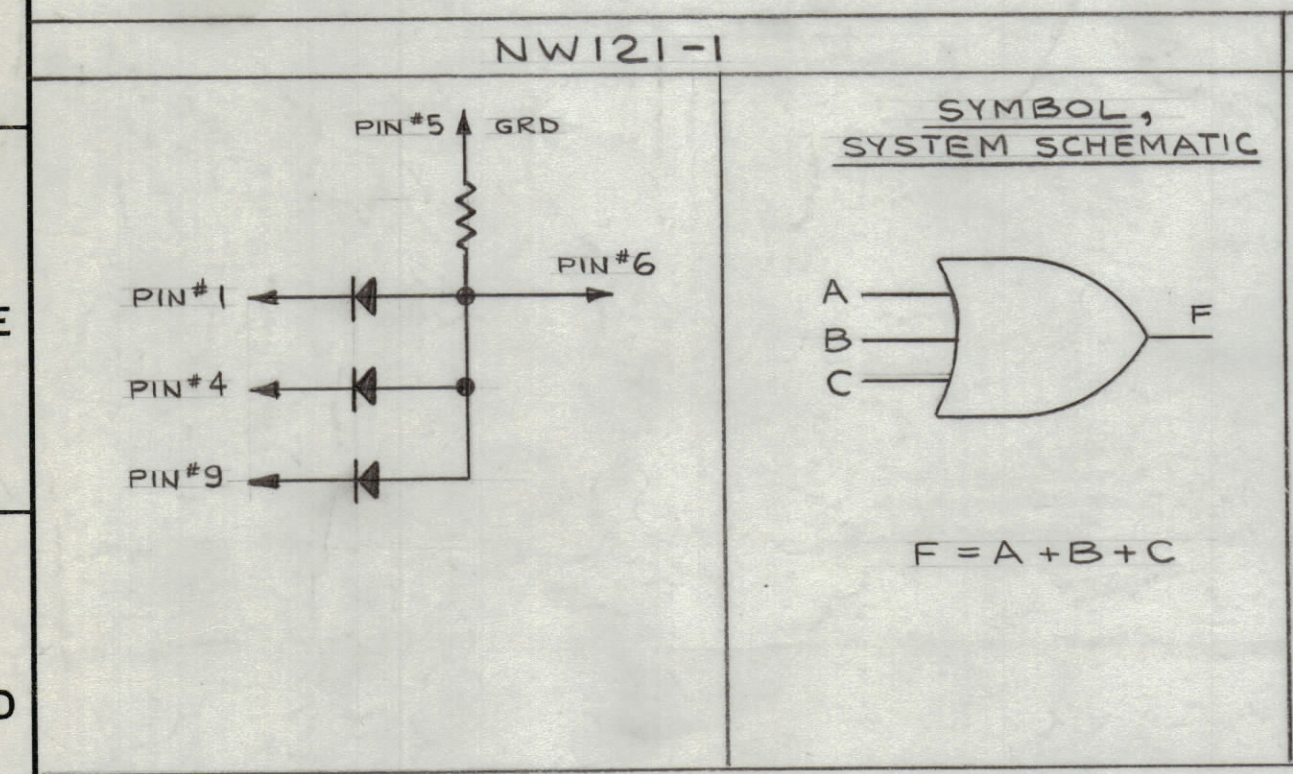


TMC P/N	MFG P/N	MFG TYPE NO.	SWITCHING CHARACTERISTICS	SIZE (INCHES)			INPUTS	OPER. TEMP.
				W	L	D		
NW121-1	730A0030	OG 11-1	A OR B	.800	.630	.770	3	65°C
-2	730A0031	OG 11-2	↑	↑	↑	↑	5	↑
-3	730A0032	OG 11-3	↑	↑	↑	↑	9	↑
-4	730B0033	OG 12-1					2 INPUTS, EA. LEG	
-5	730B0034	OG 12-2					4 INPUTS, EA. LEG.	
-6	730B0035	OG 13-1					2 INPUTS, EA. LEG	
-7	730B0036	OG 14-1					SEE NOTE #3	65°C
NW121-21		OG 11-1B				.770	3	85°C
-22		OG 11-2B				.460	5	↑
-23		OG 11-3B					9	↑
-24		OG 12-1B					2 INPUTS, EA. LEG	
-25		OG 12-2B					4 INPUTS, EA. LEG.	
-26		OG 13-1B					2 INPUTS, EA. LEG	
-27		OG 14-1B	A OR B	.800	.630	.460	SEE NOTE #3	85°C



REVISIONS						
ZONE	SYM	DESCRIPTION	DATE	E.M.N. NO.	DRAFT	CHKD
	X	EXPERIMENTAL RELEASE	12.18.64	X		
	XI	UPDATED COMPLETELY	1-23-65	XI		JM
		ORIGINAL RELEASE FOR PRODUCTION	4-23-65			
	A	NW121-21 THRU 27 & OPER TEMP COL. ADDED	1-23-65	15456		
	B	PICTORIAL REVISED, NOTE 4 ADDED	5-3-66	16184	HGA	
	C	DIM. .460 WAS .375 & MAX. ADDED TO 'D' DIM	9-11-67	18484	H.G.	FE

SWITCHING CHARACTERISTIC	
A 6 VOLT LOGIC	B -12 VOLT LOGIC
INPUT: -4V MIN	INPUT: -6V MIN
OUTPUT: -3.5V MIN	OUTPUT: -5.5V MIN



NW121

NOTE:  
 1- USABLE ON NEGATIVE OR POSITIVE LOGIC  
 2- OPER. TEMP. -35°C TO +65°C.  
 3- INPUTS FOR NW121-7: 2 SEPARATE & 1 COMMON INPUT TO TWO LEGS (SEE PICTORIAL)  
 4- POLARIZING PIN IS PIN # 7.

NOTES

QTY./UNIT	MODEL USED ON	ASSY. NO.
SCALE 1:1	CODE C	S401-167

THE CONTENTS OF THIS DRAWING ARE THE EXCLUSIVE PROPERTY OF THE TECHNICAL MATERIEL CORP. ITS UNAUTHORIZED USE OR REPRODUCTION IN WHOLE OR IN PART IS STRICTLY FORBIDDEN.

REQ'D.	ITEM	PART NUMBER	DESCRIPTION	SYMBOL
EATON LIST OF MATERIAL				
MATERIAL		THE TECHNICAL MATERIEL CORP. MAMARONECK, NEW YORK		
FINISH		TITLE NETWORK, DIGITAL OR GATE		
UNLESS OTHERWISE SPECIFIED DIMENSIONS ARE IN INCHES AND INCLUDE CHEMICALLY APPLIED OR PLATED FINISHES		DRAWN: JMB DATE: 12.18.64		
DECIMALS: .X ± .05, .XX ± .01, .XXX ± .005		CHECKED: @ DATE: 1-25-65		
FRACTIONS: ± 1/64, ANGLES: ± 0° 30'		ELECT. DES. DATE: 1-25-65		
		MECH. DES. DATE: 1-25-65		
		SHEET		
		REV. LTR.		