

IF IT IS FOUND DESIRABLE TO CHANGE ANY TOLERANCE OR OTHER DETAIL SPECIFIED ON THIS DRAWING NOTIFY THE PURCHASER PROMPTLY.

STANDARD DRAWING

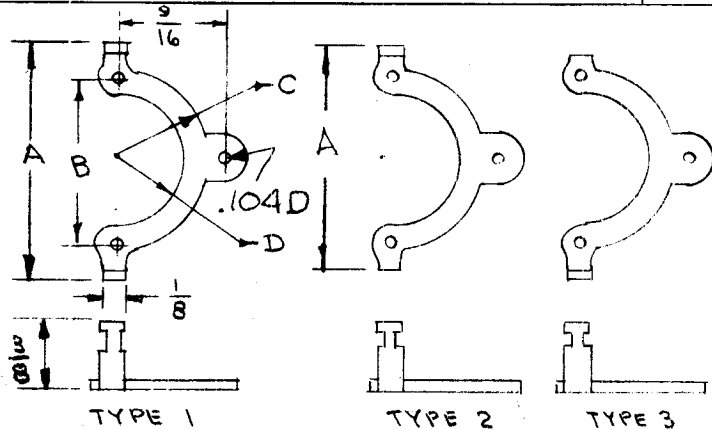
NT-101

B

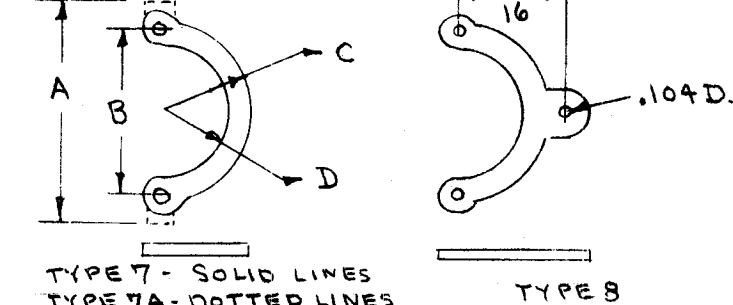
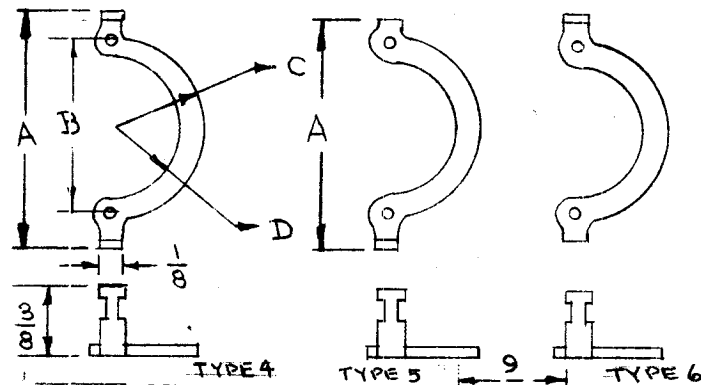
MAXIMUM ALLOWABLE TOLERANCES HAVE BEEN DETERMINED AND DEVIATIONS WILL BE CAUSE FOR REJECTION.
REMOVE ALL BURRS AND SHARP EDGES

USED ON

MODEL	PROJECT NO.	ASS'Y. NO.	DATE
-------	-------------	------------	------



TMC Part No.	Cinch Part No.	Type	(REF)	B	C	D	Use With Socket
NT-101-1	1031	1	1-1/4	.875	15/32	11/32	TS-102
NT-101-2	1075	2	1-5/32	.875	15/32	11/32	TS-102
NT-101-3	1076	3	1-5/32	.875	15/32	11/32	TS-102
NT-101-4	1060	4	1-1/4	.875	15/32	11/32	TS-102
NT-101-5	11167	4	1-9/16	1.125	17/32	13/32	TS-103
NT-101-6	402	5	1-5/32	.875	15/32	11/32	TS-102
NT-101-7	11512	5	1-15/32	1.125	17/32	13/32	TS-103
NT-101-8	403	6	1-5/32	.875	15/32	11/32	TS-102
NT-101-9	11314	6	1-15/32	1.125	17/32	13/32	TS-103
NT-101-10	1052	7	---	.875	7/16	21/64	TS-102
NT-101-11	11511	7A	1-11/32	1.125	17/32	13/32	TS-103
NT-101-12	1044	8	---	.875	15/32	11/32	TS-102



REF: CINCH

Specification: .064 Brass, Cadmium Plated Mounting Holes to be tapped for No. 4-40 thread.

ISSUE	ITEM	CHANGED FROM	DATE	CN. NO.	DRAFTS	CHECKER	ENG. APP.
B			2.2.66	17377	WSD	q/s	gc

TOLERANCES		SCALE	
ALL OTHERS:	DEC. DIM. ± FRAC. DIM. ± ANGULAR DIM. ±	DRILL, PUNCH, COMMERCIAL STOCK SIZES AND MANUFACTURERS TOLERANCES ARE NOT INCLUDED.	

REQ.	ITEM	PART NO.	DESCRIPTION	SYMBOL
		064	THE TECHNICAL MATERIEL CORP. MAMARONECK, NEW YORK	
		STOCK SIZE		
		BRASS	RETAINER, ELECTRON TUBE SOCKET	
		MATERIAL	Miniature and Naval Sockets	
		WEIGHT PER PC.		
		TYPE & TEMPER	C.O.D. 8-27-52	G.T.O
			DRAWN	ELEC. DES. APP.
			MECH. DES. APP.	
		HEAT TREAT. SPEC.	MD 8-27-52	
			CHECKED	FINAL APPROVAL
		CADMIUM PLATED		
		FINISH & SPEC. NO.		