

5

4

3

2

1

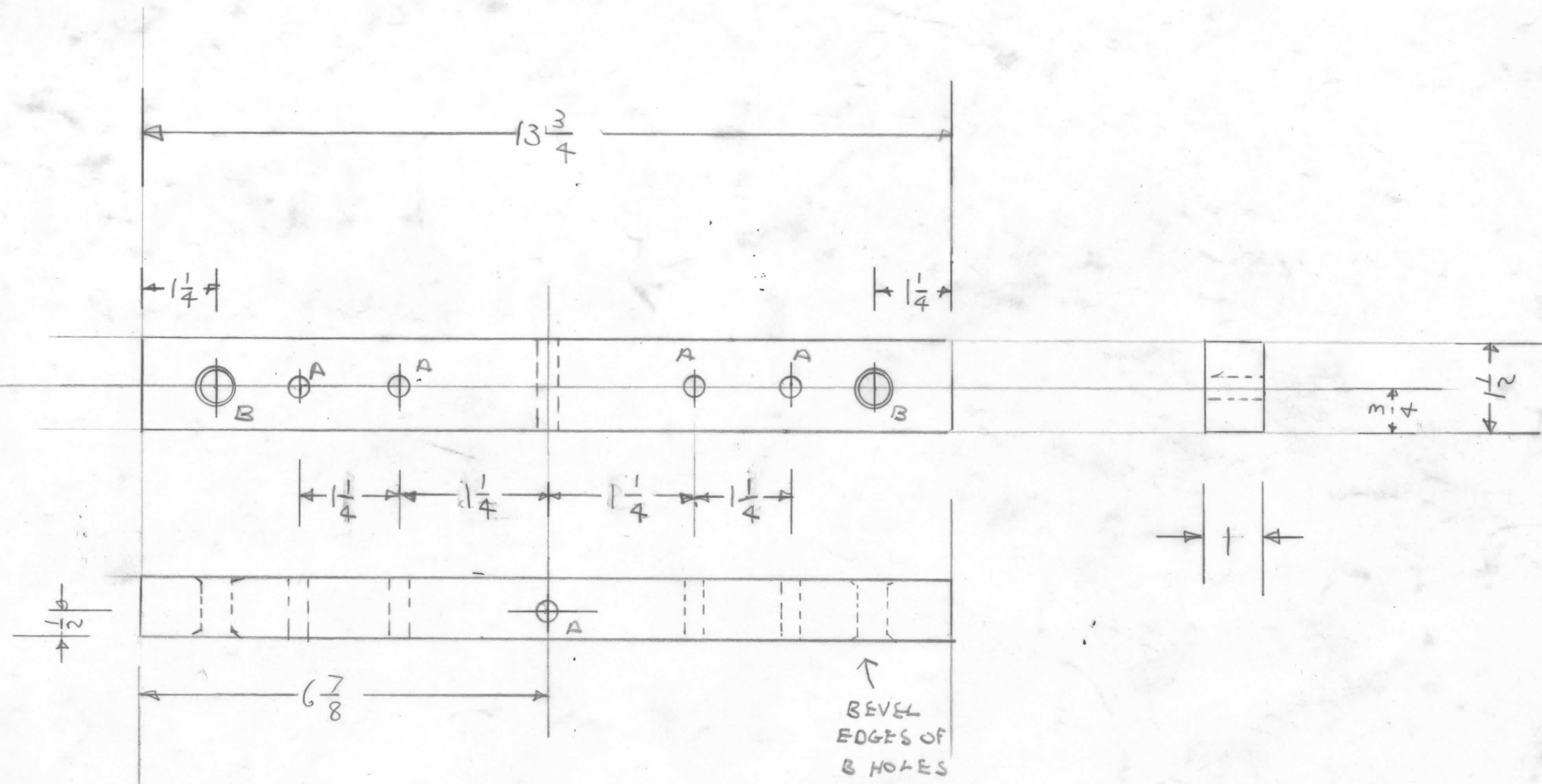
REVISIONS							
E.M.N. NO.	DRAFT	CHKD	ZONE	LTR	DESCRIPTION	DATE	APPROVED

D

C

B

A



A HOLES 9/32 5 REQ'D
 B HOLES 13/32 2 REQ'D

DPA125

QTY / UNIT	MODEL USED ON	ASS'Y NO.
APPLICATION		
CODE		

NOTICE TO PERSONS RECEIVING THIS DRAWING
 THE TECHNICAL MATERIEL CORPORATION claims proprietary right in the material disclosed hereon. This drawing is issued in confidence for engineering information only and may not be reproduced or used to manufacture anything shown hereon without permission from THE TECHNICAL MATERIEL CORPORATION to the user. This drawing is loaned for mutual assistance and is subject to recall at any time.

UNLESS OTHERWISE SPECIFIED DIMENSIONS ARE IN INCHES AND INCLUDE CHEMICALLY APPLIED OR PLATED FINISHES

DECIMALS	FRACTIONS
.X ± .05	1/64
.XX ± .01	TOLS. ANGLES
.XXX ± .005	0° -30'

MATERIAL
 G11 FIBER GLASS
 FINISH
 NATURAL

REQ'D	ITEM	PART NUMBER	DESCRIPTION	SYM.
LIST OF MATERIAL				
FINAL APPROVAL <i>OB</i> DATE				
MECH. DES. DATE				
ELECT. DES. DATE				
CHECKED DATE				
DRAWN DATE				
THE TECHNICAL MATERIEL CORP. MAMARONECK, NEW YORK INSULATOR MID. SECTION DPA125				
SIZE	CODE IDENT. NO.	DWG NO.	ISSUE	
B	82679	NS 152		
SCALE			SHEET OF	