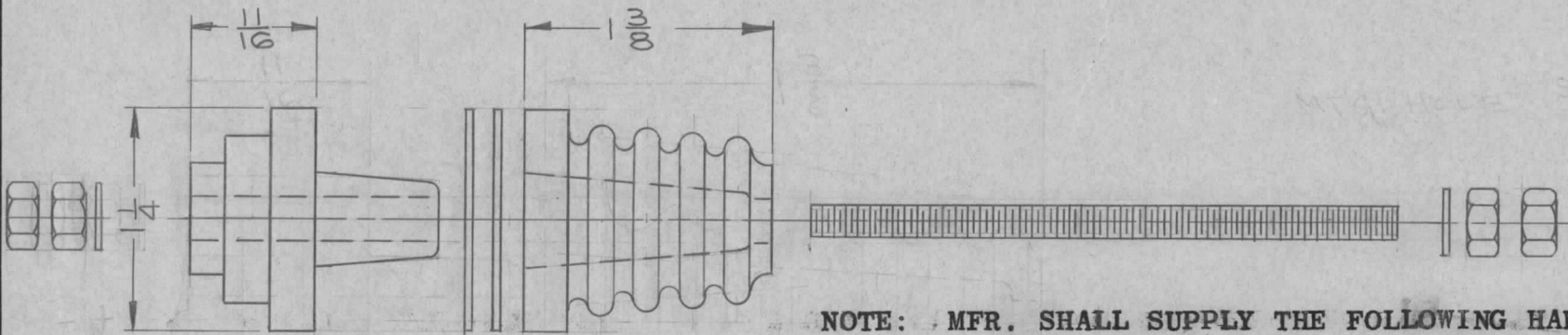


IF IT IS FOUND DESIRABLE TO CHANGE ANY TOLERANCE OR OTHER DETAIL SPECIFIED ON THIS DRAWING NOTIFY THE PURCHASER PROMPTLY.

NS-109 A

MAXIMUM ALLOWABLE TOLERANCES HAVE BEEN DETERMINED AND DEVIATIONS WILL BE CAUSE FOR REJECTION. REMOVE ALL BURRS AND SHARP EDGES

REQ PER UNIT		MODEL	PROJECT NO.	ASSY. NO.	DATE
2		DAC	130	A-623	12-9-53



NOTE: MFR. SHALL SUPPLY THE FOLLOWING HARDWARE ;
 1 STUD - 10-32 X 3 1/4 LG., BRASS, NICKEL PLATED.
 4 HX NUTS, BR, NICKEL
 2 FLAT WASHERS, BR., NICKEL
 2 CORK WASHERS

DIMENSIONS FOR REFERENCE ONLY

MOUNTING HOLE - 9/16 DIA

REQ.	ITEM	PART NO.	DESCRIPTION	SYMBOL
			THE TECHNICAL MATERIEL CORP. MAMARONECK, NEW YORK	
STOCK SIZE				
PORCELAIN			INSULATOR,	
MATERIAL		WEIGHT PER PC.	FEED-THRU	
GRADE L2 OR BETTER				
TYPE & TEMPER				
HEAT TREAT. SPEC.				
FINISH & SPEC. NO.				
			DRAWN	ELEC. DES. APP.
			CHECKED	FINAL APPROVAL
			NS-109 A	

A	1	REVISED & REDRAWN	8-16-53	9946				
ISSUE	ITEM	CHANGED FROM	DATE	CN. NO.	DRAFTS	CHECKER	ENG. APP.	

TOLERANCES

SCALE **S-401-20**

DRILL, PUNCH, COMMERCIAL STOCK SIZES AND MANUFACTURERS TOLERANCES ARE NOT INCLUDED.

ALL OTHERS
 DEC. DIM. ±
 FRAC. DIM. ±
 ANGULAR DIM. ±