

TABLE I

TMC CODE for THD Size	THREAD SIZE	RECOMMENDED HOLE SIZES		A		B	G	DASH NUMBERS AVAILABLE AS STANDARD	MFR REF. NO.	MFR. PART NO.
		MAX.	MIN.	MAX.	MIN.	MAX.	MAX.			
256	2-56NC-2B	.139	.136	.190	.184	.066	.135	1 thru 6	1	*
440	4-40NC-2B	.164	.161	.236	.229	.082	.160	1 thru 6	1	*
632	6-32NC-2B	.194	.191	.285	.278	.097	.190	1 thru 6	1	*
832	8-32NC-2B	.224	.221	.315	.307	.108	.220	1 thru 6	1	*
1024	10-24NC-2B	.253	.250	.346	.338	.129	.249	2 thru 6	1	*
1032	10-32NF-2B									
420	1/4-20UNC-2B	.347	.344	.440	.431	.175	.343	4 - 5 - 6	1	*
428	1/4-28UNF-2B									
518	5/16-18UNC-2B	.416	.413	.534	.525	.222	.412	4 - 5 - 6 - 7	1	*
524	5/16-24UNF-2B									
616	3/8-16UNC-2B	.487	.484	.628	.619	.238	.483	5 - 6 - 7	1	*
624	3/8-24UNF-2B									
813	1/2-13UNC-2B	.628	.625	.816	.806	.332	.624	5 - 6 - 7	1	*
820	1/2-20UNF-2B									
1224	12-24 UNC-2B	.280	.277	.375		.125	.275 Max	3	2	S1224-1
1224	12-24 UNC-2B	.280	.277	.375		.125	.275 Max	4	2	S1224-2
1224	12-12 UNC-2B	.280	.277	.375		.125	.275 Max	5	2	S1224-3

REF. TABLE II SHANK CODE

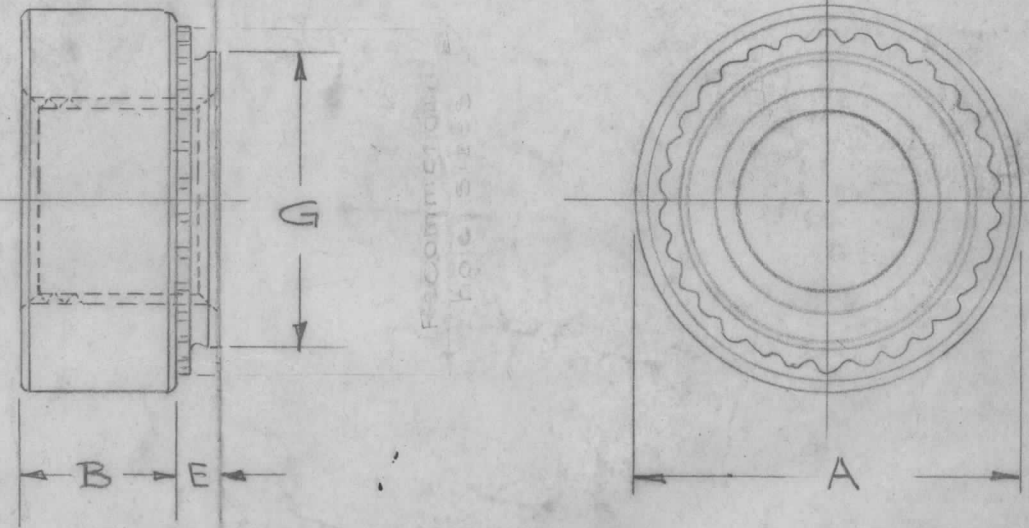
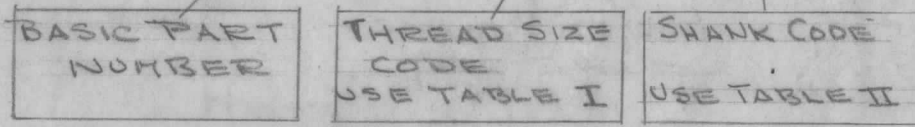
TABLE II

SHANK CODE	PLATE THICKNESS		E
	MIN.	MAX.	MAX.
1	.020	.031	.018
2	.032	.039	.030
3	.040	.055	.038
4	.056	.090	.054
5	.091	.122	.087
6	.123	.184	.120
7	.185	UP	.180

TABLE III

RECOMMENDED ASSEMBLY PRESSURE			
NOMINAL SIZE	INSTALLATION PRESSURE LBS.	AVERAGE PUSH-OUT LBS.	AVERAGE TORQUE
#2	1000-1500	190	12
#4	1500-2000	200	17
#6	2000-2500	204	33
#8	3000-3500	237	41
#10	4000-4500	398	67
1/4	5000-5500	662	151
5/16	6000-6500	838	232
3/8	7000-8000	1550	386
1/2	11000-12000	1690	485

TMC-PART NO. TO BE IN FOLLOWING FORM
 NT-129-832-7



NOTICE TO PERSONS RECEIVING THIS DRAWING

THE TECHNICAL MATERIEL CORPORATION claims proprietary right in the material disclosed hereon. This drawing is issued in confidence for engineering information only and may not be reproduced or used to manufacture anything shown hereon without permission from THE TECHNICAL MATERIEL CORPORATION to the user. This drawing is loaned for mutual assistance and is subject to recall at any time.

Property of:
 THE TECHNICAL MATERIEL CORPORATION
 MAMARONECK, NEW YORK

STANDARD DRAWING

For Purchasing Information Only:
 * Mfr. Ref. No. 1 Part No. consists of "SN" plus the dash number plus the shank code.
 Example:- SN-420-5 Swage Nut, 1/4-20 size w/.087 shank length for use in .091-.122 plate.)

MFR. REF. NO. 1 = S401-21
 MFR. REF. NO. 2 = S401-165

NOTE:
 The mounting hole may be drilled, reamed or punched, but correct hole tolerance must be observed to assure proper anchoring of the nut.

FINISH: S-135 Nickel Plate.

ISSUE	ITEM	CHANGED FROM	DATE	CH. NO.	DRAFTS	CHECKER	ENG. APP.
J	1	COL. "G" WAS "MIN"	7-28-66	16648	RME	JCB	JCB
H	1	MFRS PART NO. COL. PURCHASING INFO. CLARIFIED.	9-4-63	9895	AK	JCB	JCB
G	1	FINISH WAS CAD. PLATE PER COP-416, TYPE I, CLASS 3	6-12-63	9252	JCB	JCB	JCB

TOLERANCES: DEC. DIM. ±, FRAC. DIM. ±, ANGULAR DIM. ±

SCALE: S-401-165 S-401-21

MAXIMUM ALLOWABLE TOLERANCES HAVE BEEN DETERMINED AND ANY DEVIATIONS WILL BE CAUSE FOR REJECTION. REMOVE ALL BURRS AND SHARP EDGES

REQ. PER UNIT	MODEL	PROJECT NO.	ASSY. NO.	DATE

REQ. ITEM	PART NO.	DESCRIPTION	SYMBOL
		THE TECHNICAL MATERIEL CORP. MAMARONECK, NEW YORK	
		STOCK SIZE	
		STEEL	
		MATERIAL	
		.10 CARBON (MIN)	
		TYPE & TEMPER	
		HEATTREAT. SPEC.	
		DRAWN	
		CHECKED	
		FINAL APPROVAL	
		SEE NOTE	
		FINISH & SPEC. NO.	
		ELEC. DES. APP	
		MECH. DES. APP	