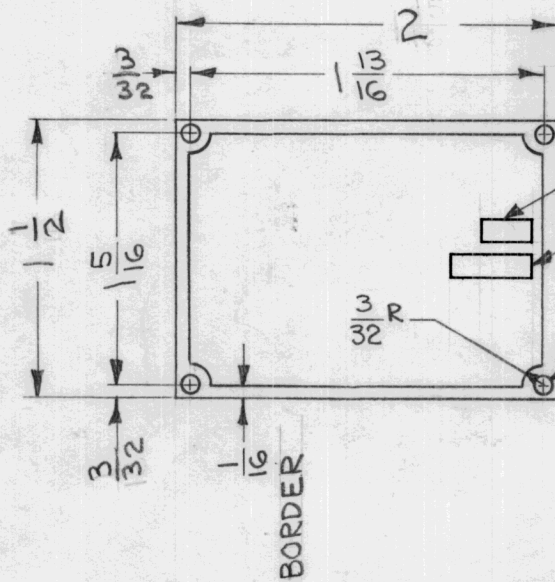
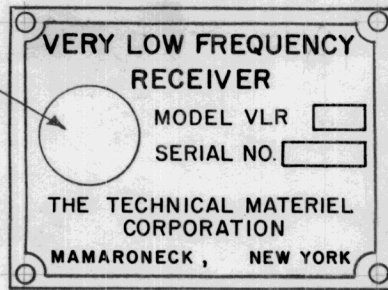


REQ. PER UNIT	USED ON			NP 611	O
	MODEL	ASS'Y. NO.	DATE		
1	VLR-1		10-7-63		

TMC GLOBAL INSIGNIA.



MODEL BLOCK 1/8 x 1/4

SERIAL NO BLOCK 1/8 x 7/16

4 HOLES 3/32 DIA.

NOTES:

FINISH: REVERSE ETCH, ANODIZED ON LUSTERLESS BLACK BACKGROUND (TYPE 37038) PER FED. STANDARD NUMBER 595. COLORLESS VARNISH PER MIL-V-6894.

TYPE FACE: SPARTAN MEDIUM. SIZE TO FIT SPACE AND LAYOUT. MINIMUM LETTER SIZE- 3/64 HIGH.

APPLICABLE MODEL AND SERIAL NO. WILL BE STAMPED BY TMC.

NAMEPLATE TO BE MANUFACTURED IN ACCORDANCE WITH MIL-P-15024B, TYPE A, 17 JAN. 1957.

REQ.	ITEM	PART NO.	M. GELLMAN			DESCRIPTION	SYMBOL					
0	ORIGINAL RELEASE FOR PRODUCTION	5-11-64	0	A.M.	@	.032 THK	THE TECHNICAL MATERIEL CORP. MAMARONECK. NEW YORK					
X2	OVERALL DIM. CHGD.	1/10/64	X2	<i>hde</i>		STOCK SIZE						
X1	3/32 HOLES WERE .076D TYPE + TEMPER WAS 250	1/9/64	X1	GDL	<i>hde</i>	ALUMINUM	NAMEPLATE, IDENTIFICATION					
SYM	DESCRIPTION	DATE	CH. NO.	DRAFTS	CHECKER	ENG. APP.	MATERIAL					
UNLESS OTHERWISE SPECIFIED DIMENSIONS ARE IN INCHES AND INCLUDE CHEMICALLY APPLIED OR PLATED FINISHES		SCALE	1:1			5052-H32	<i>G. Leman</i>	<i>COO</i>	<i>RJC</i>			
						TYPE & TEMPER	HEAT TREAT. SPEC.	DRAWN	CHECKED	FINAL APPROVAL		
DECIMALS .X ± .05 .XX ± .01 .XXX ± .005		FRACTIONS ± 1/64 ANGLES ± 0° 30'		TOLERANCES		CODE	A	SEE NOTES	<i>W</i>	<i>W</i>	NP 611	O
						FINISH & SPEC. NO.	ELEC. DES. APP.	MECH. DES. APP.				